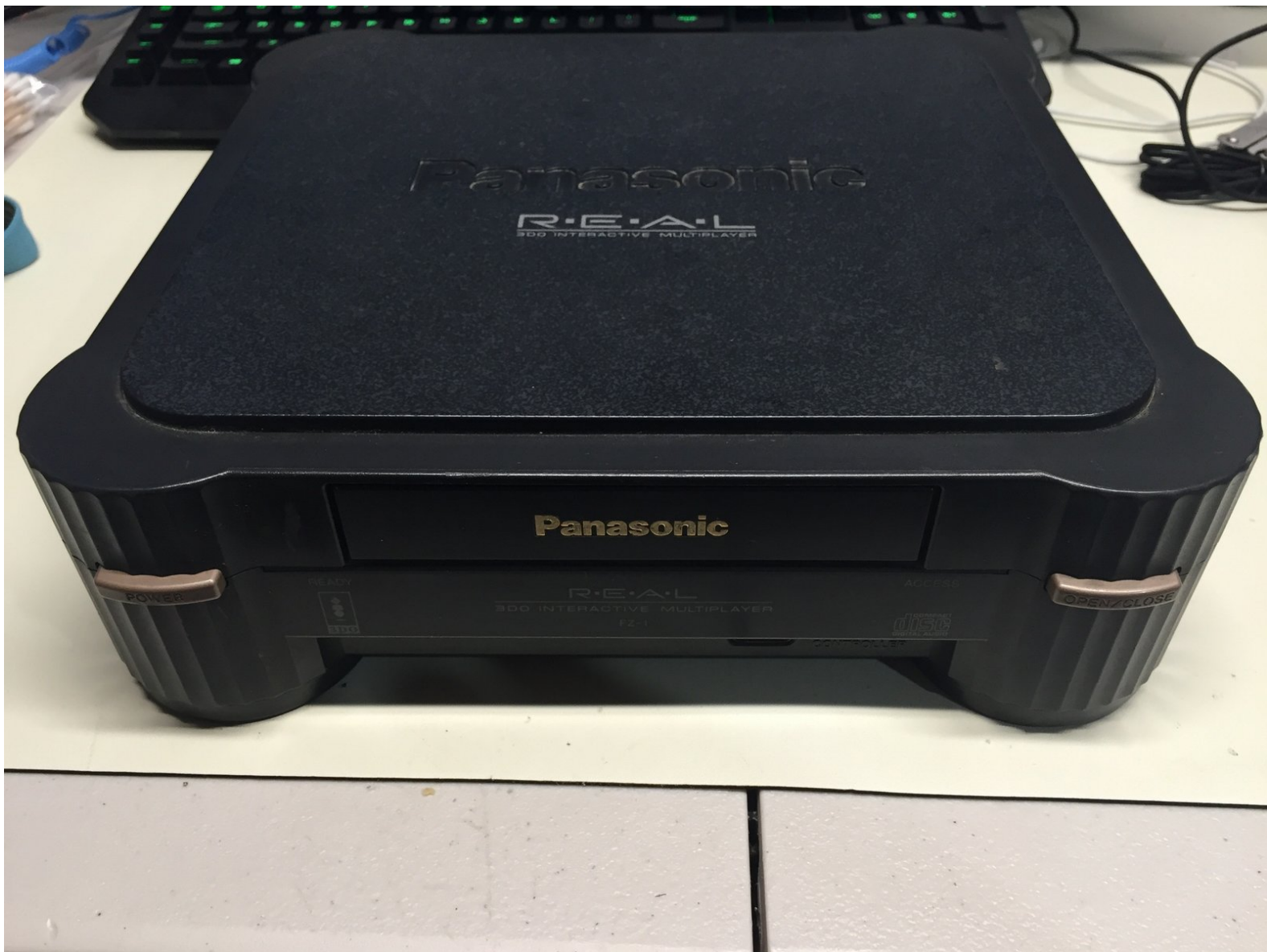




# 3DO FZ-1 Disassembly Guide

A guide to disassembling and reassembling the Panasonic FZ-1 R.E.A.L. 3DO Interactive Multiplayer Home Console.

Written By: Ben Eccles



## INTRODUCTION

Today we are going to take apart the Panasonic version of the FZ-1 R.E.A.L 3DO Interactive Multiplayer home video game console. Originally released in 1993, the 3DO was known as an early adopter of CD-Drive games, and for the ability to display photos and play music.



### TOOLS:

- [Phillips #1 Screwdriver](#) (1)
  - [Phillips #2 Screwdriver](#) (1)
  - [Precision Tweezers Set](#) (1)
  - [Spudger](#) (1)
  - [Electric Screwdriver](#) (1)
  - [Anti-Static Project Tray](#) (1)
-

## Step 1 — Lets Begin!



- Here we have the front view of the FZ-1 3DO.
- Note the ports on the back of the unit. The FZ-1 comes with RF, S-Video, and Composite Outputs, as well as an expansion port on the back of the unit.
- A larger 2nd expansion slot can be found on the right side of the unit.

## Step 2 — Outer Casing



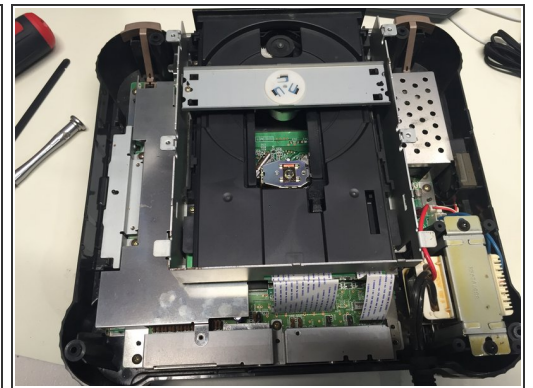
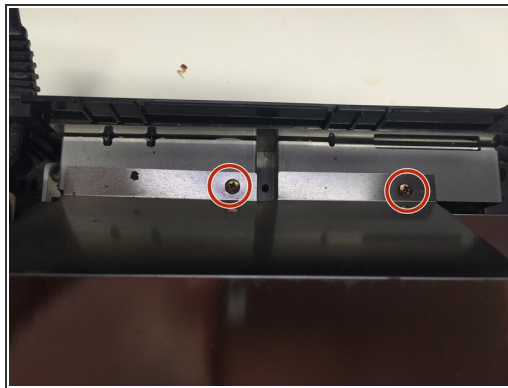
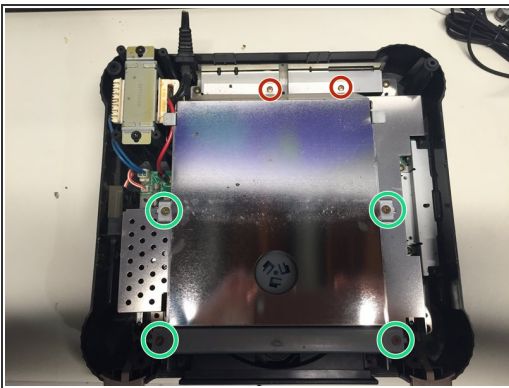
- Flip the unit over, so that the bottom side of the case is facing up towards you, exposing the four screws casing screws.
- Remove the **four #2 Phillips Screws** from the casing.
- After the screws are removed, flip the unit back over while holding the top and bottom pieces of the case together.

## Step 3 — Top Casing



- Remove the top portion of the case to expose the internal components.

## Step 4 — Disc Drive



- Remove the **2 #1 Phillips Screws** from the back of the Disc Drive Shield.
- Using a Spudger, carefully pry up the four metal tabs to remove the disc drive cover.
- Remove the **4 #2 Phillips Screws**.
- Remove the disc drive shield, and the two bars you just unscrewed.

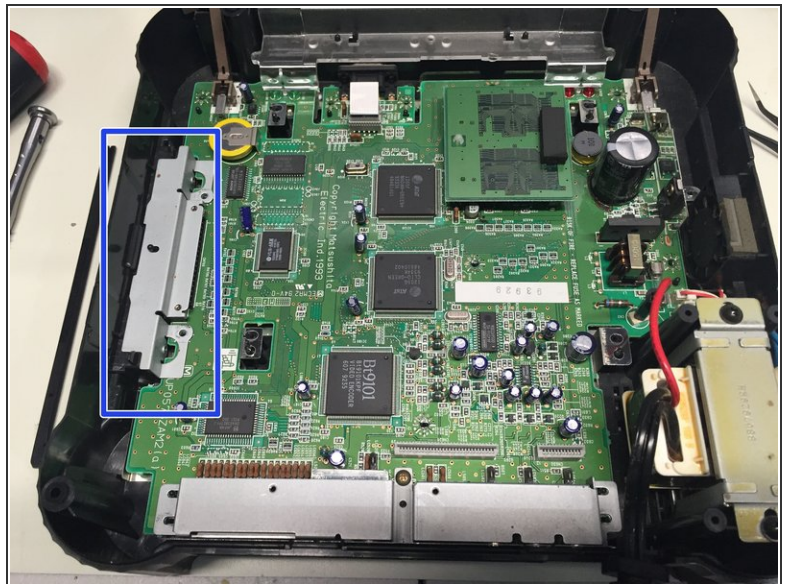
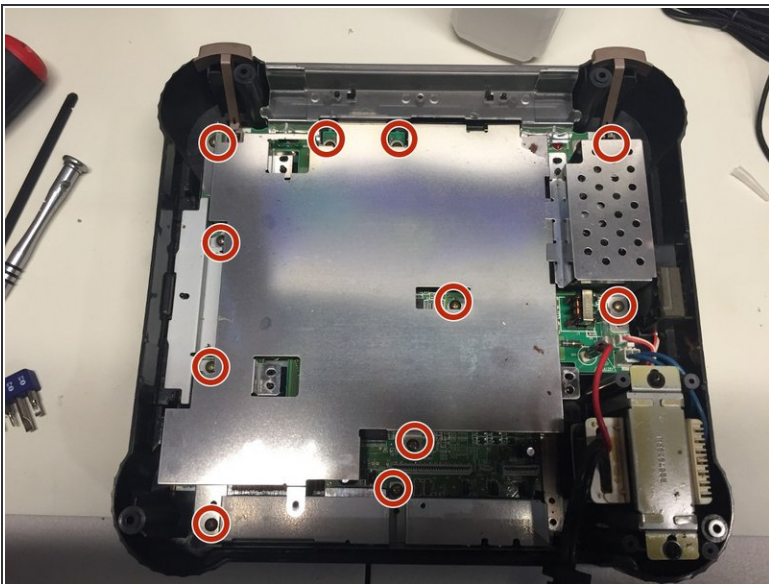


## Step 5



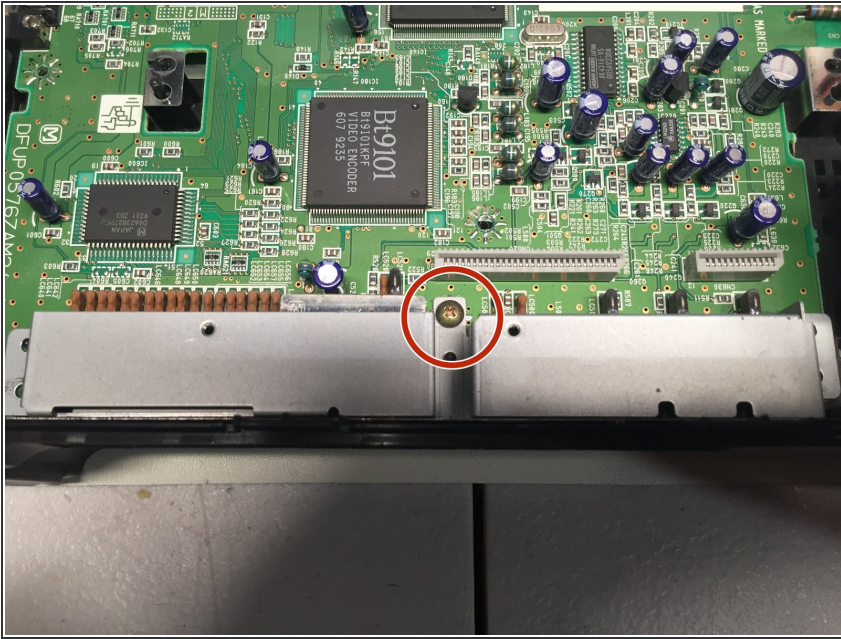
- Remove the **5 #1 Phillips Screws** holding the CD Drive to the motherboard.
- Carefully unplug the two ribbon cables connecting the CD drive to the motherboard.
- You can now safely remove the CD drive from the case.

## Step 6



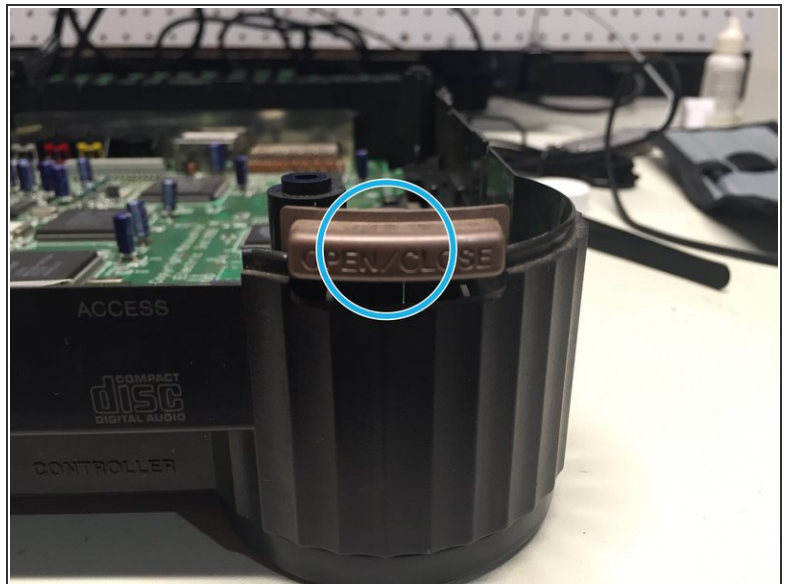
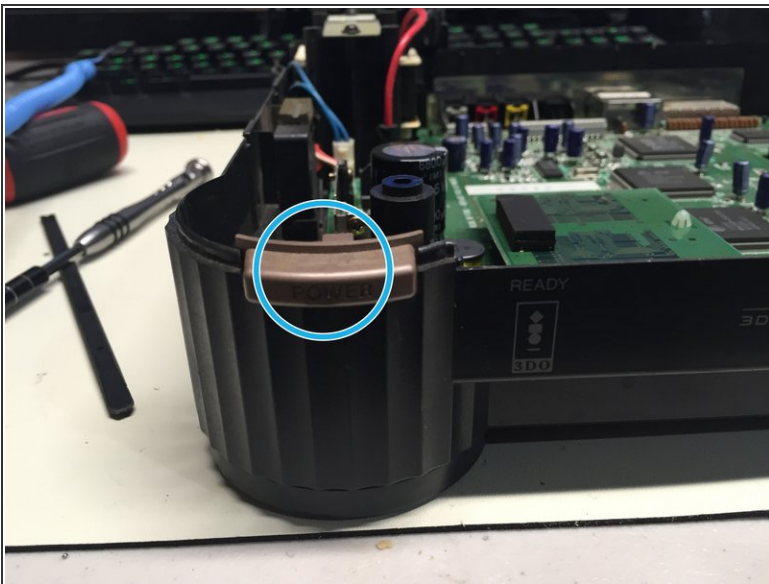
- Remove the **11 #1 Phillips Screws** connecting the metal shield to the motherboard.
- Remove the metal shield.
- Remove the metal cover from the expansion port.

## Step 7



- Remove the **#1 Phillips Screw** from back port cover, and then remove the cover.

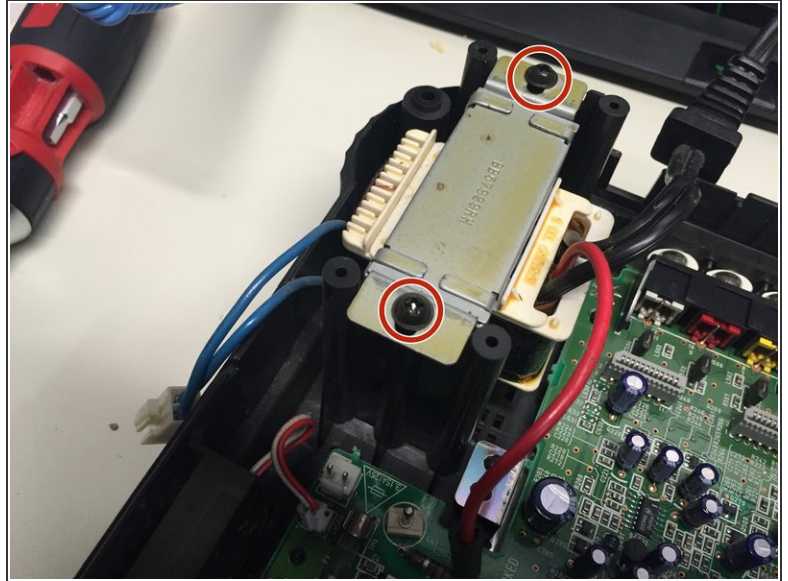
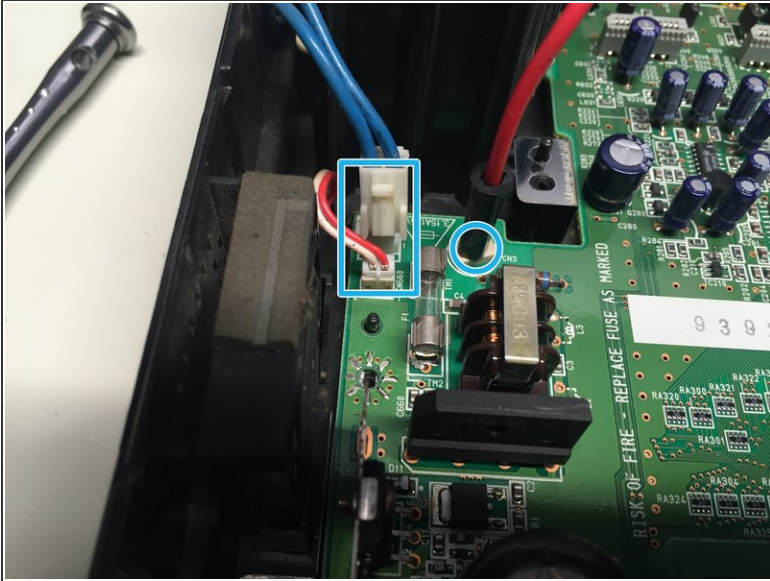
## Step 8



- Remove the plastic cover, power and eject buttons found at the front end of the unit.

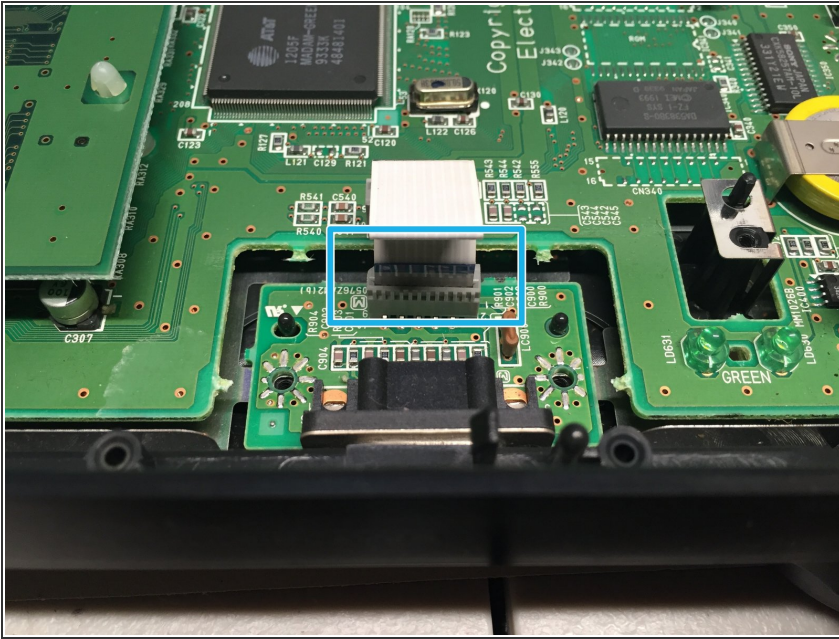


## Step 9



- Unplug the **power and fan cables** from the motherboard.
- Remove the 2 **#2 Phillips Screws** holding the power supply to the case.
  - ⓘ The electric screwdriver comes in handy loosening the PSU screws on the FZ-1.
- Remove the **power supply and fan** from the case.

## Step 10



- Unplug the **ribbon cable** connecting the motherboard to the controller port board.
- Remove the **controller board and motherboard**.

## Step 11 — Bottom Heat shield and Case



- Remove the metal shield at the bottom of the case. Mission complete!

To reassemble your device, follow these instructions in reverse order.