



# Asus MeMO Pad 8 ME181C Motherboard Replacement

Use this if you need to replace a malfunctioning motherboard or faulty SD card reader or charging port.

Written By: emm4





## TOOLS:

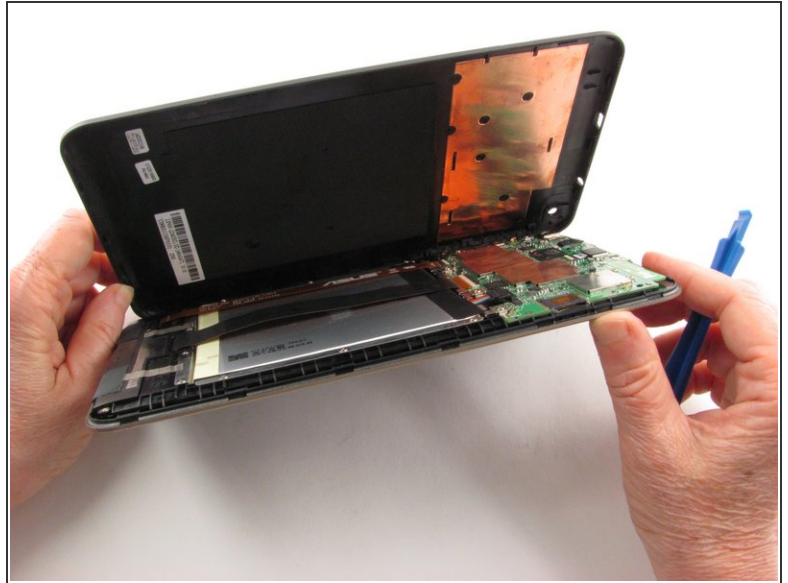
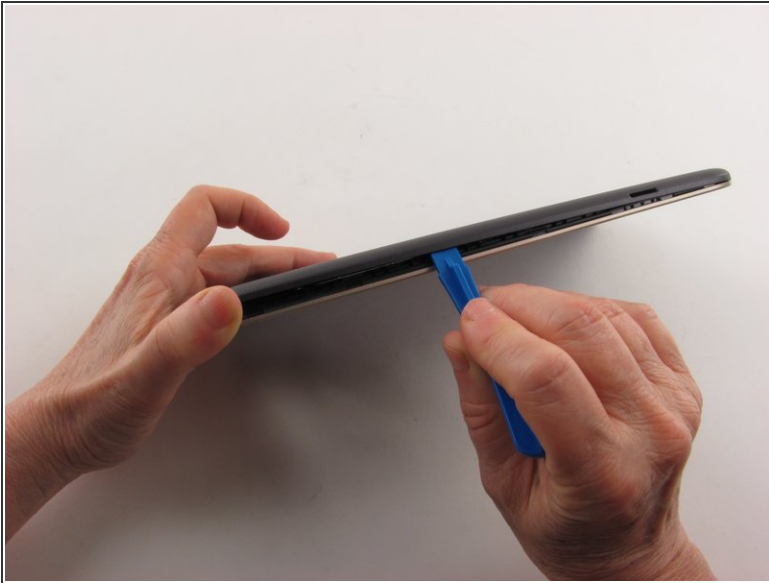
- [iFixit Opening Tools](#) (1)
- [Spudger](#) (1)
- [Phillips #000 Screwdriver](#) (1)
- [Tweezers](#) (1)



## PARTS:

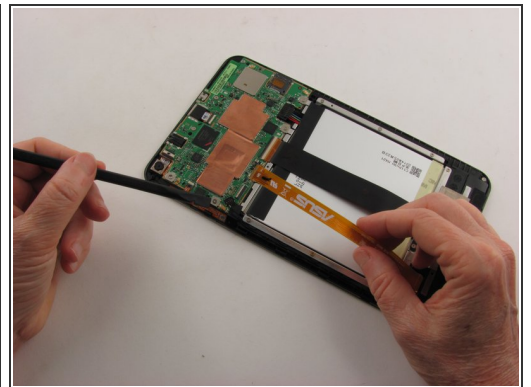
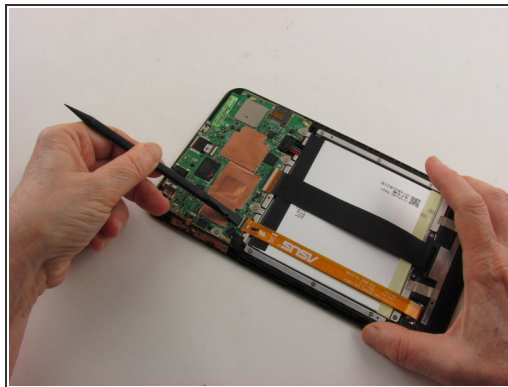
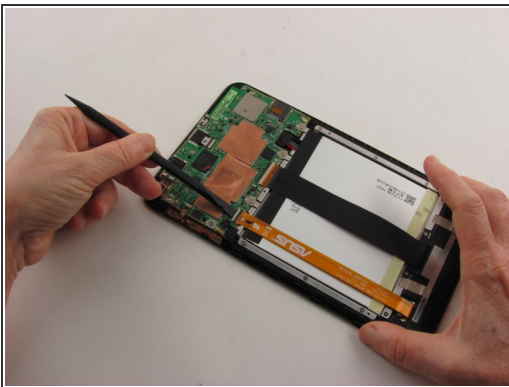
- [ASUS MeMO Pad 8 \(ME181C\) Motherboard](#) (1)

## Step 1 — Rear Case



- Insert a plastic opening tool into the seam between the rear case and the screen.
- Work the plastic opening tool around the perimeter of the device to completely remove the rear case.

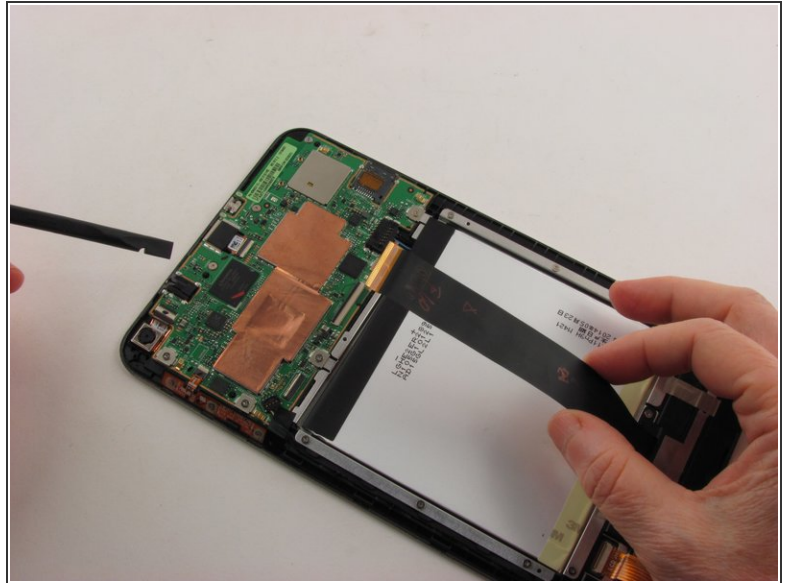
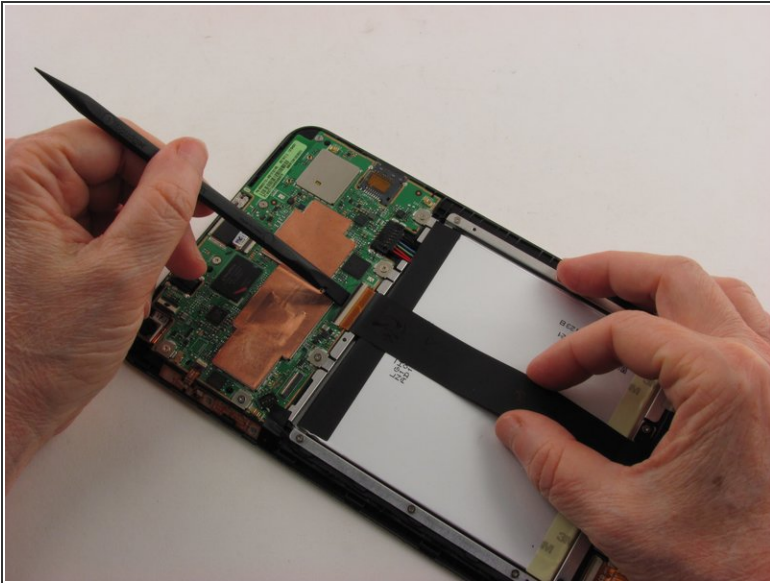
## Step 2 — Battery



- Use the flat end of the nylon spudger to flip up the retaining flap of the Zero Insertion Force (ZIF) connector holding the orange motherboard ribbon cable in place.

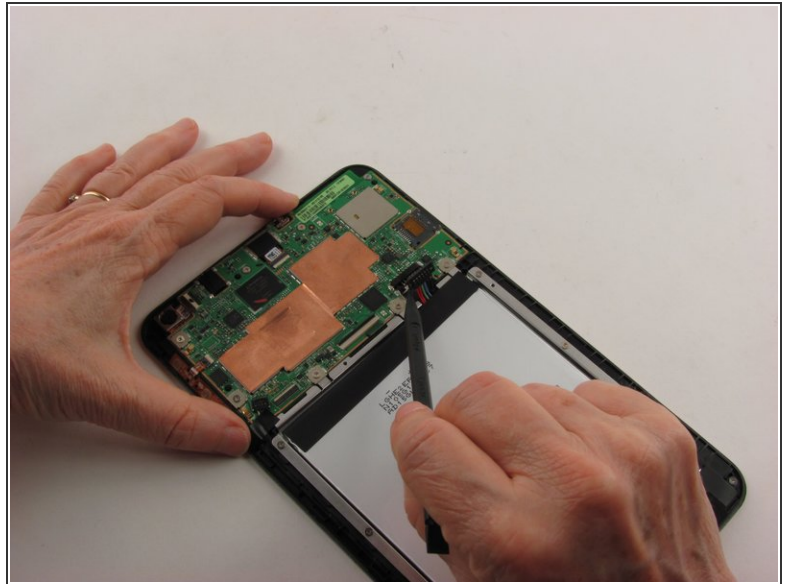
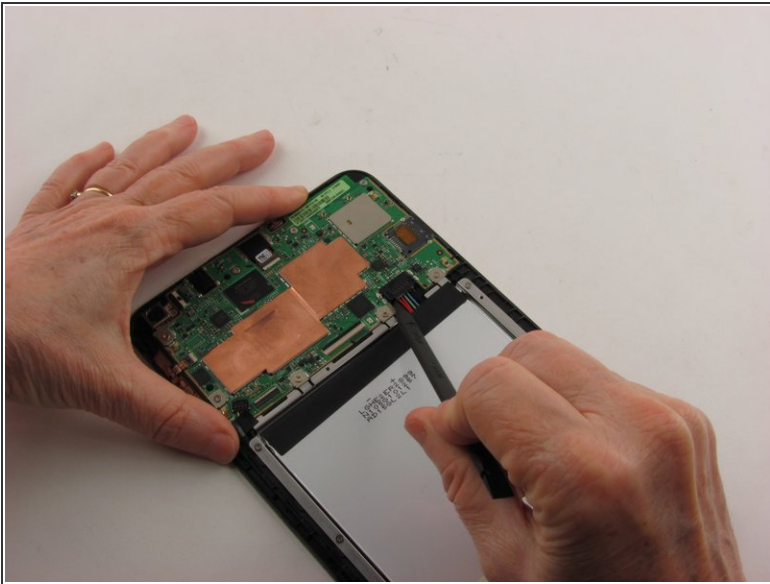


### Step 3



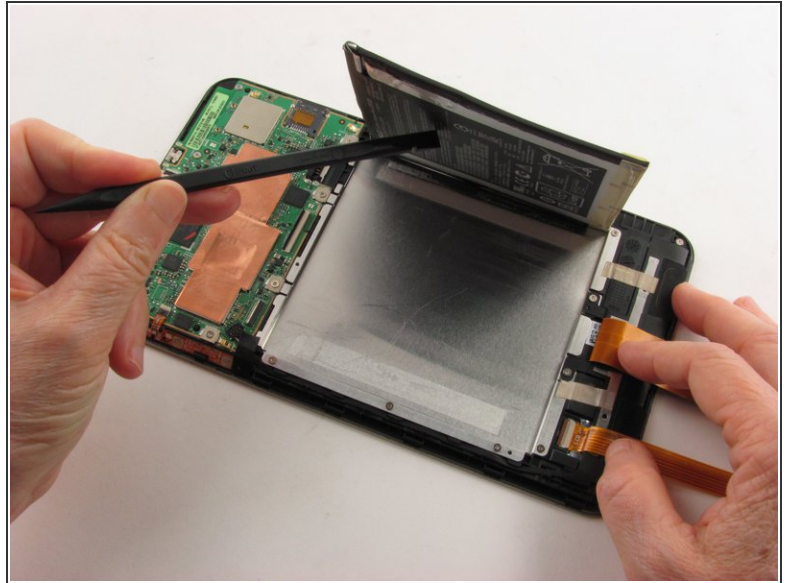
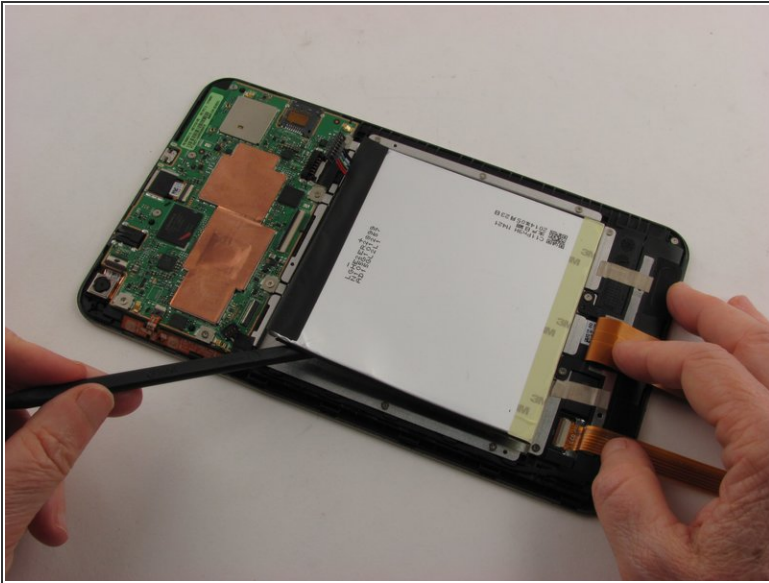
- Use the flat end of the nylon spudger to flip up the retaining flap of the ZIF connector holding the black motherboard ribbon cable in place.

### Step 4



- Use the pointed end of the nylon spudger to pop up the battery connector.
- ☑ When reconnecting the battery cable after replacing the battery, press the battery connector with your finger until it clicks into place.

## Step 5



- Use the flat end of the nylon spudger to pry up the battery.
- ⓘ The battery is secured with adhesive. Some force is required to detach battery from the device.
- ⚠ If removing motherboard is necessary, it may be easier complete this step with the motherboard simultaneously later.

## Step 6 — Motherboard



- Working from top to bottom, you will remove all screws with a #000 Phillips head driver, (20) total.
- (2) screws located in the top corners. NOTE: These screws will be in the speakers.
- (4) screws located along the top of the battery, (3) along each side of the battery, and (3) along the bottom of the battery.
- (1) screw in the middle of the motherboard on the side with the orange ribbon cable, (4) screws in the bottom of the motherboard .

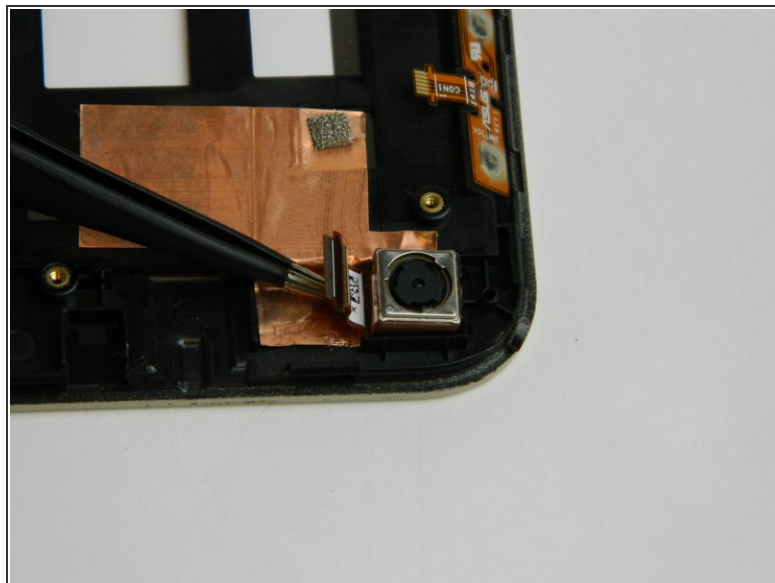
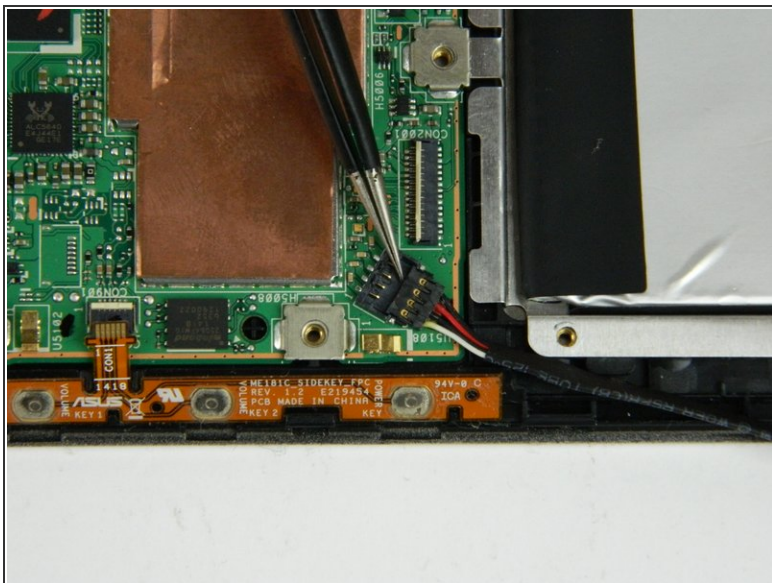
## Step 7



- Make sure that the battery is disconnected from the motherboard by unplugging the ribbon cables.

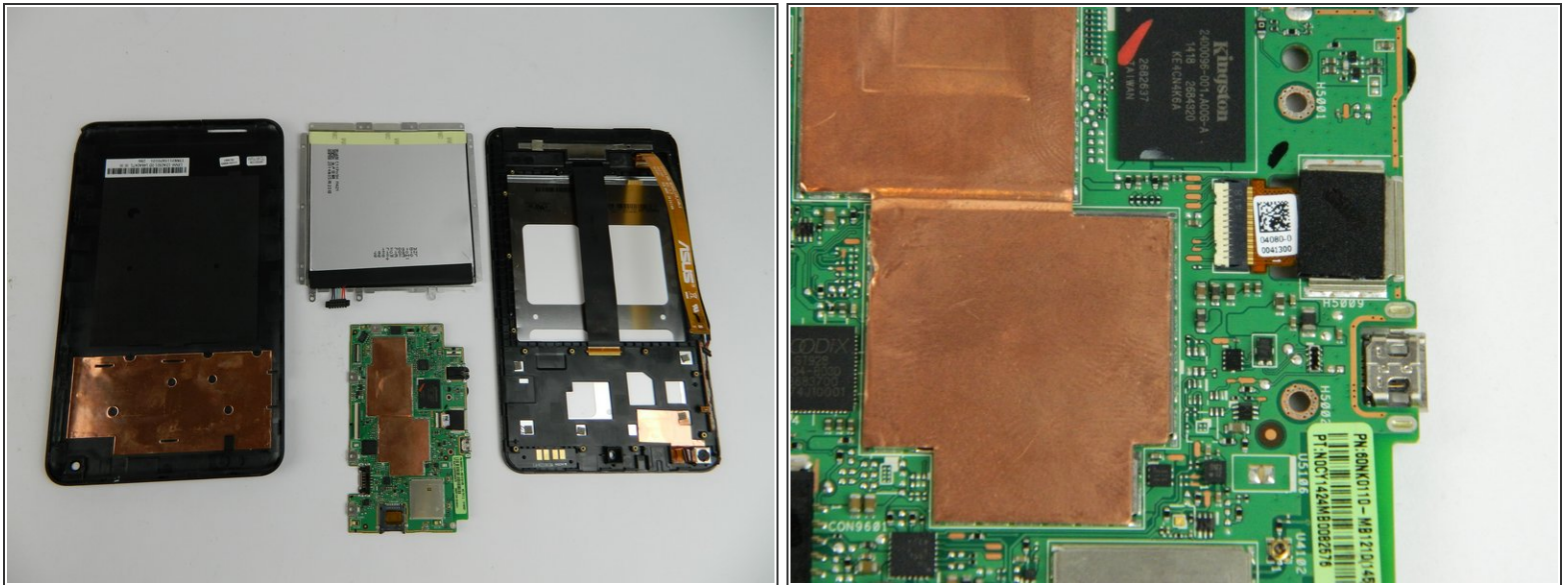


## Step 8



- Before you remove the entire assembly, first unplug side buttons and cameras from the motherboard using tweezers.
- ☑ The motherboard is easiest to remove simultaneously with the battery. Refer to Step 5 for more details.

## Step 9



- While the device is open, this is your opportunity to check and see if there is any other damage to the motherboard or other associated parts.

To reassemble your device, follow these instructions in reverse order.