



# IBM Thinkpad R40 Wi-Fi Card Replacement

Replace the Wi-Fi Card of your IBM Thinkpad R40.

Written By: Erin



---

## INTRODUCTION

Use this guide to replace the Wi-Fi Card of the IBM Thinkpad R40.



### TOOLS:

- [64 Bit Driver Kit](#) (1)
-

## Step 1 — Wi-Fi Card



- Use a screwdriver to remove the screws located at the bottom of the laptop, covering the battery pack.

## Step 2



- Remove the battery from the laptop and place it to the side.

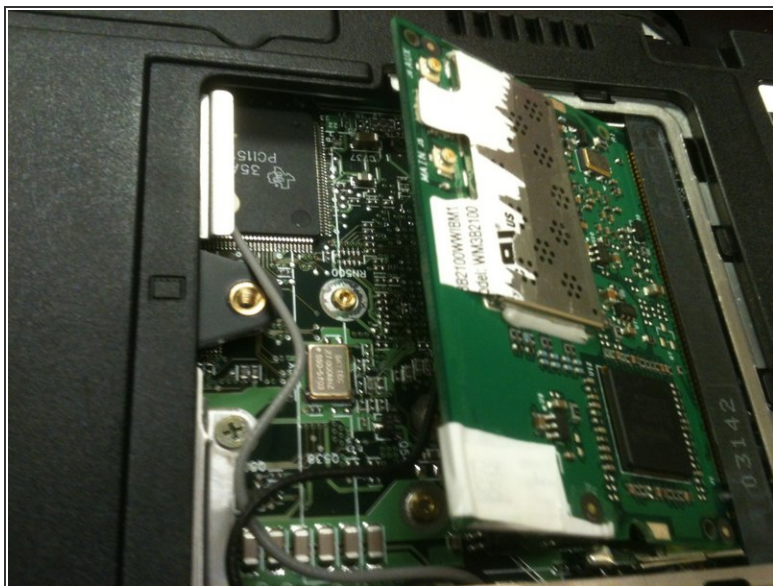
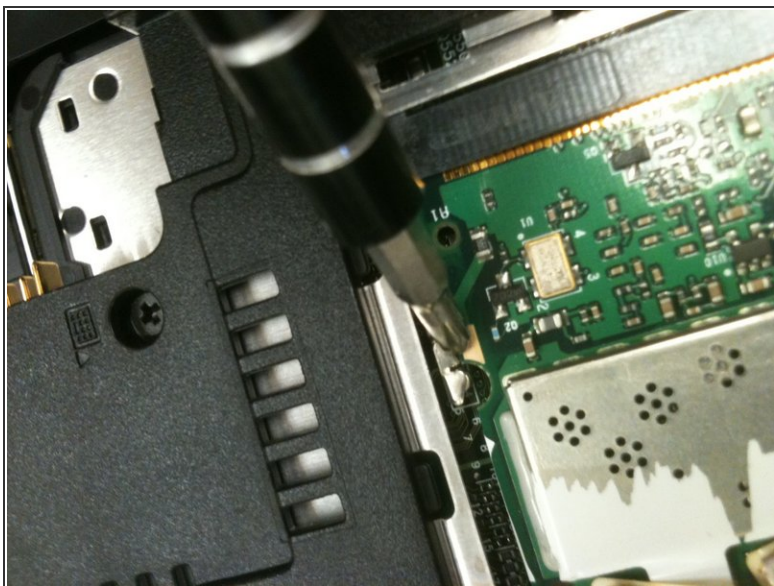


### Step 3



- Loosen the screw covering the Wi-Fi card panel.

### Step 4



- Open the now loosened section.
- Release the clips that hold the Wi-Fi card in place.
- Remove the Wi-Fi card.

To reassemble your device, follow these instructions in reverse order.