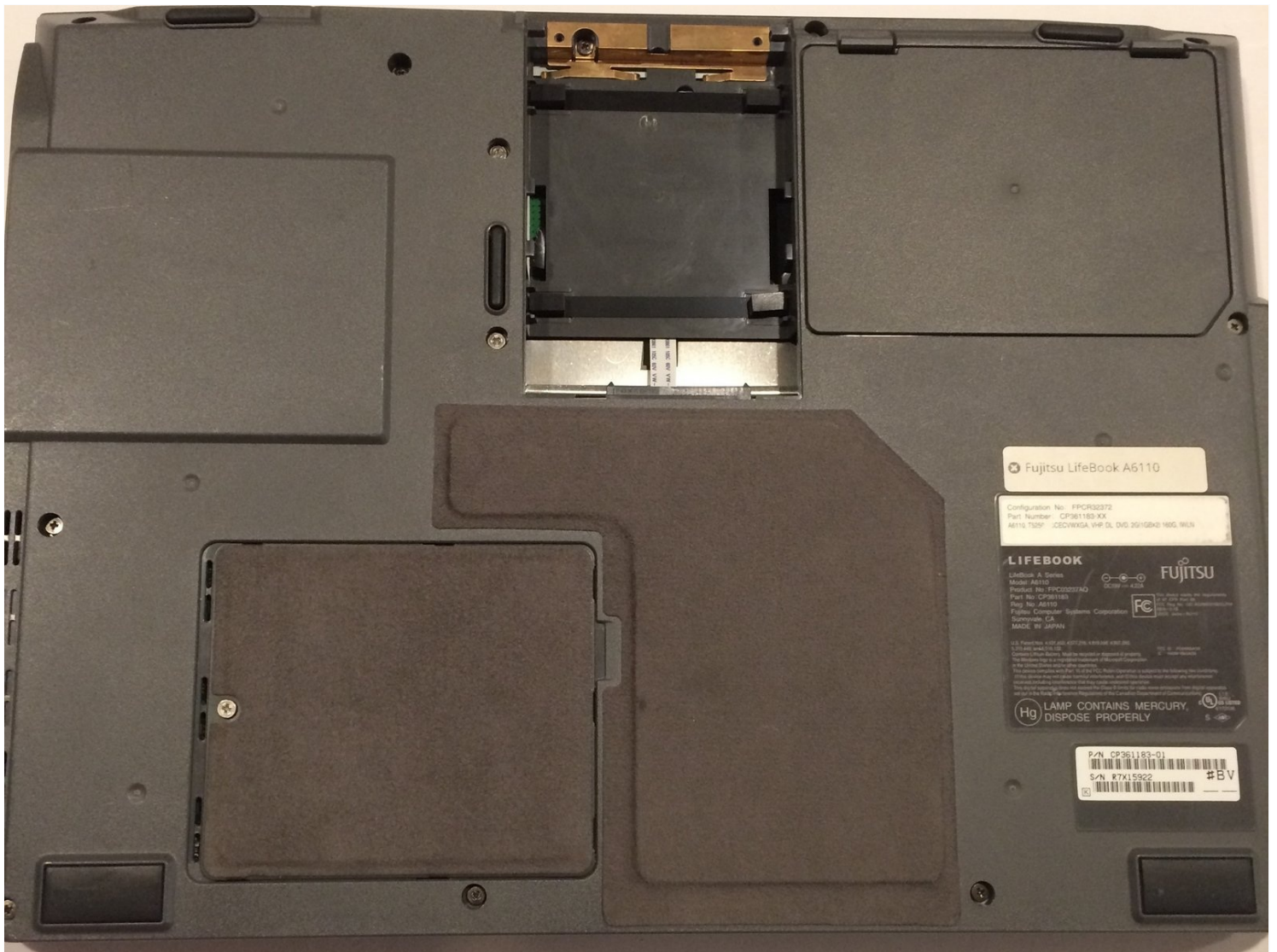




Fujitsu Lifebook Model A6110 Battery Replacement

If your Fujitsu Lifebook Model A6110 laptop's...

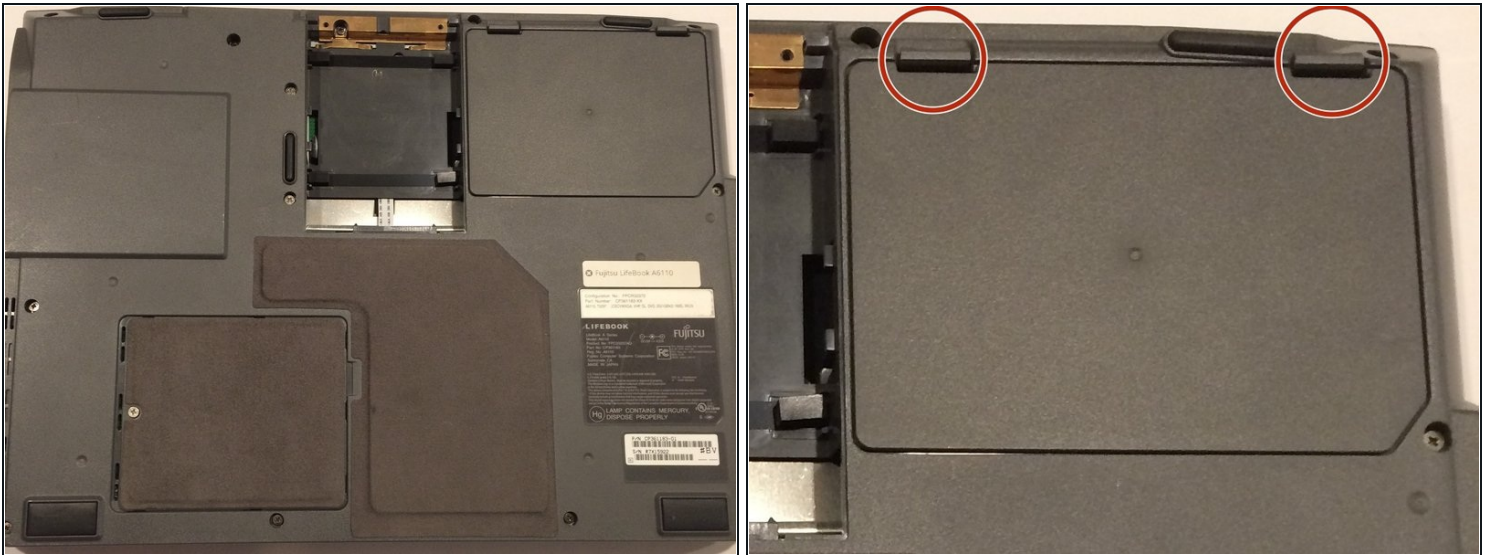
Written By: Alvin Thamrin



INTRODUCTION

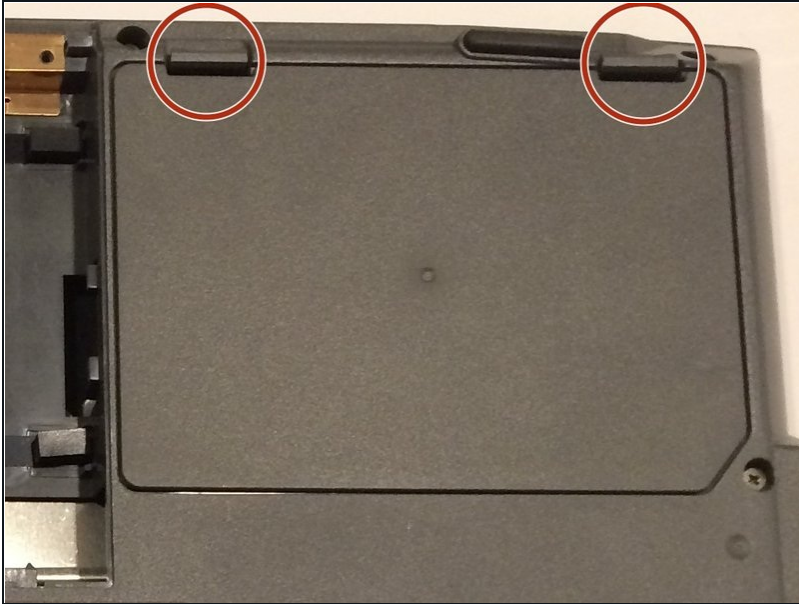
If your Fujitsu Lifebook Model A6110 laptop's battery dies too fast, or the battery indicator drops too quickly, then the battery may need replacement. This guide will show you the steps to remove the battery from your laptop.

Step 1 — Battery



- ⚠ The computer should be fully turned off and disconnected from the power source.
- ⚠ Before handling electronic components, you should ground yourself. This will prevent damage to the components from a static charge. You can do this by touching any metal object.
- Flip your laptop so that the bottom of the laptop is facing up and the hinges of the screen are closest to you.

Step 2



- To remove the battery, place your fingers underneath the two clips and simultaneously lift them up while pulling the cover towards you.

To reassemble your device, follow these instructions in reverse order.