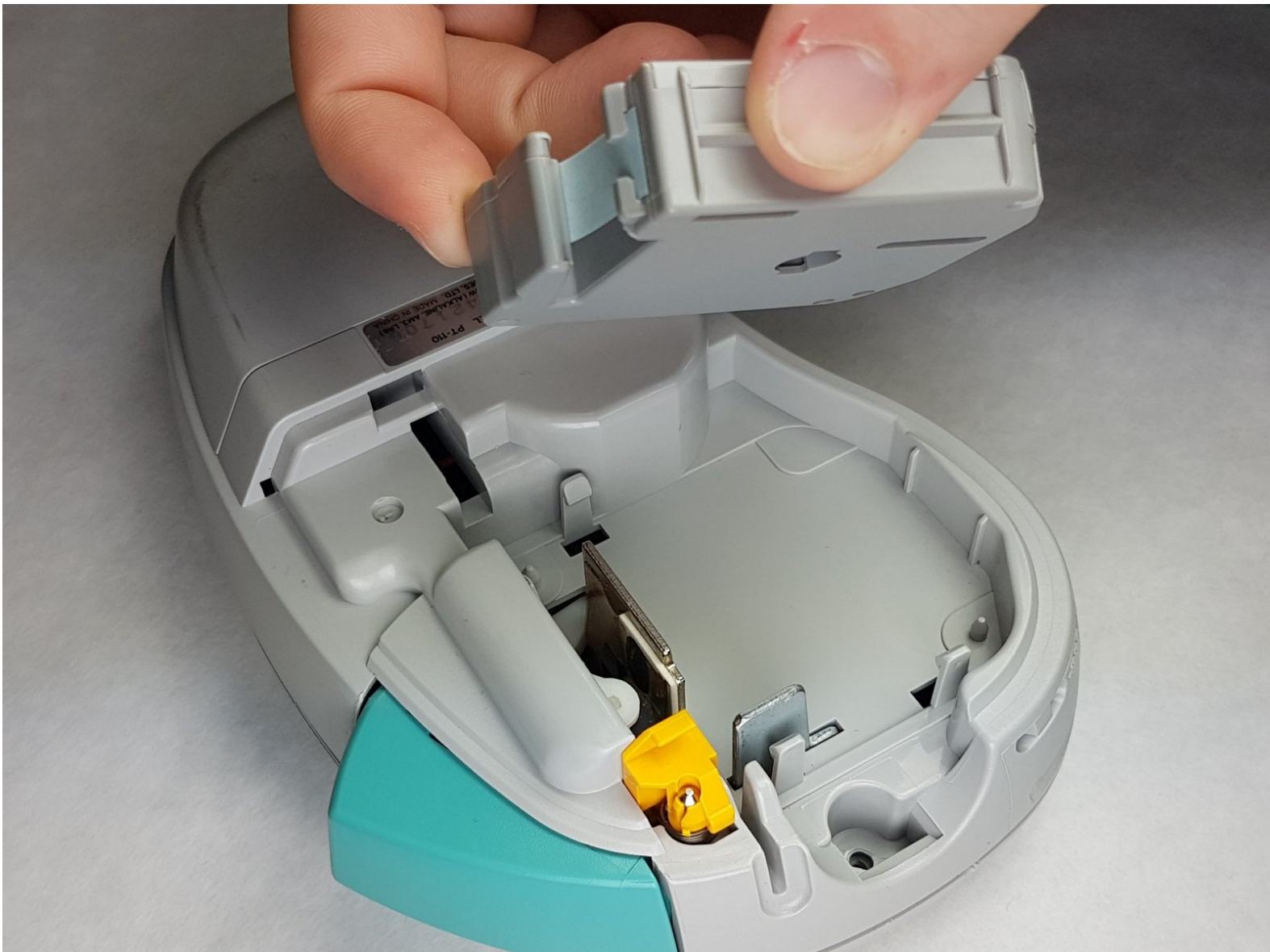




Brother PT-110 Tape Cassette Replacement

This guide will show you how to remove/replace the tape cassette.

Written By: Mohammad Almerri



INTRODUCTION

The tape cassette holds the labels for the device, which allows you to change the color of your labels if you wish.

Step 1 — Tape Cassette



- Push on the side of the cover, and pull up to remove it.

Step 2



- Remove the tape cassette.

To reassemble your device, follow these instructions in reverse order.