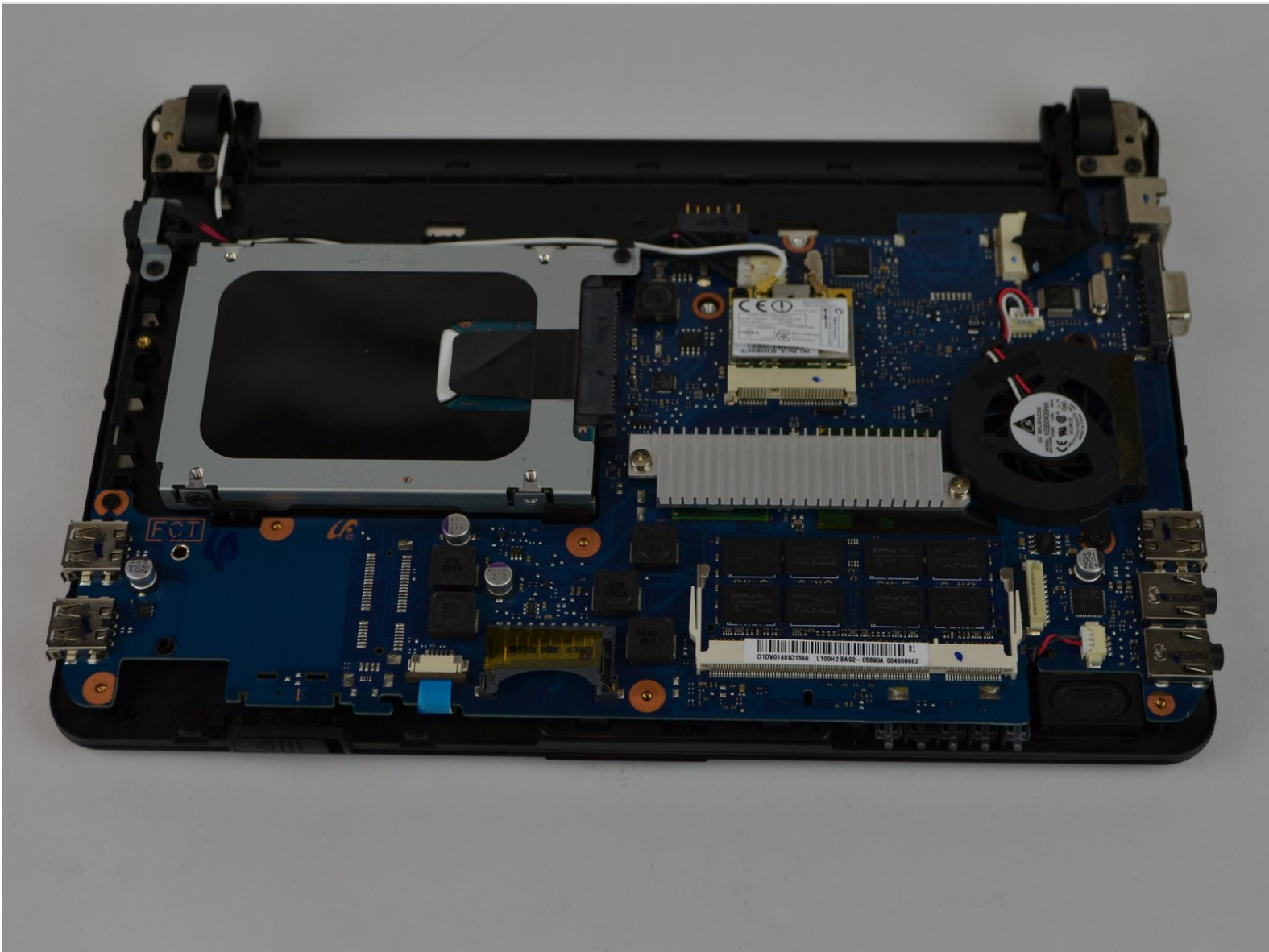




# Samsung NP-130-JA01US Hard Drive Replacement

Replacing the hard drive will increase the speed of the computer. After removing the back cover you will only need the Phillips 1 drive to unscrew the computer. Also be aware for the different sizes of the screws because they can vary.

Written By: Jorge Quintana



## INTRODUCTION

We will be replacing the hard drive from the NP-130 Samsung computer. With Increasing the speed the computer will run programs much smoother without running into firewalls or malware. Finding a Hard Drive for this computer is inexpensive.



### TOOLS:

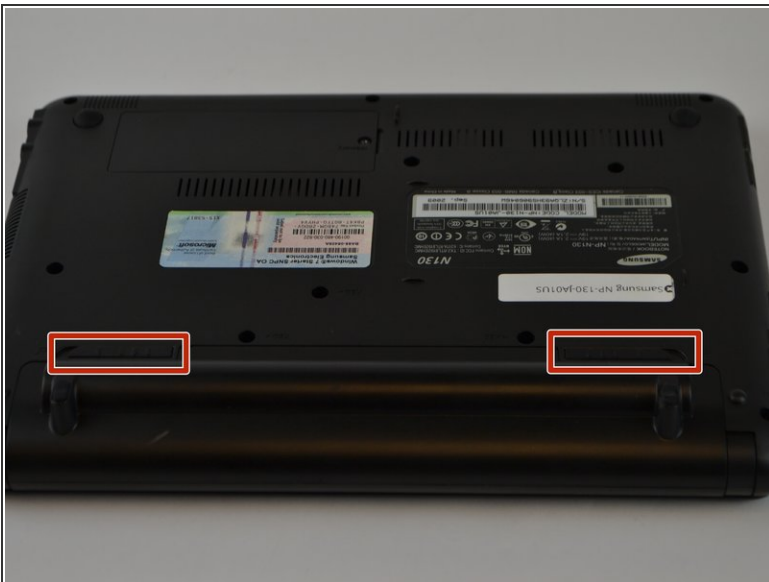
- [Phillips #1 Screwdriver](#) (1)
  - [iFixit Opening Tools](#) (1)
-

## Step 1 — Battery



- Turn off the computer.
- Disconnect the charger cable from the computer.
- ⚠ Failure to disconnect the charger cable from the computer could result in an electric shock.
- Flip the computer over so the underside is facing up.

## Step 2



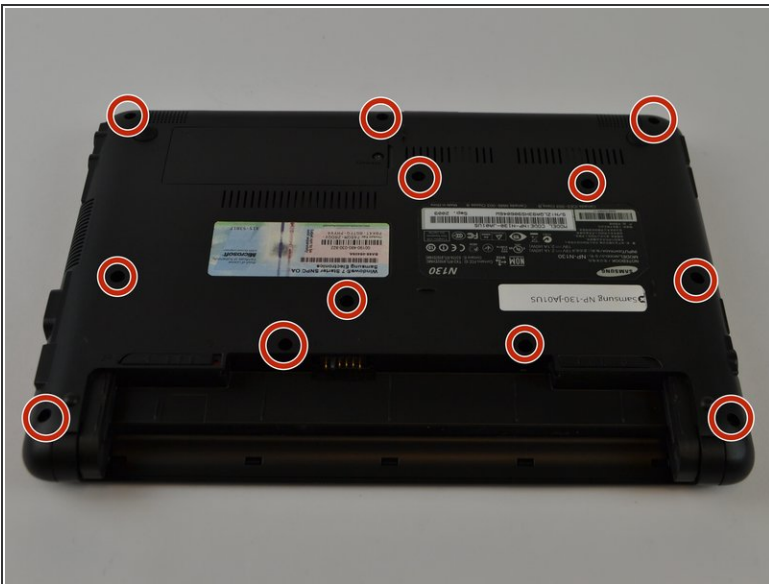
- Slide the left and right slider buttons fully away from each other.

### Step 3



- Pull the battery out of the computer.

### Step 4 — Hard Drive



- Using a Philips 1 screwdriver carefully remove all 12 screws of the back cover.

ⓘ The screws are Phillips 1 (PH 1) with a length of 60 millimeters (mm)

⚠ Do not force the screwdriver as you might damage the screws.

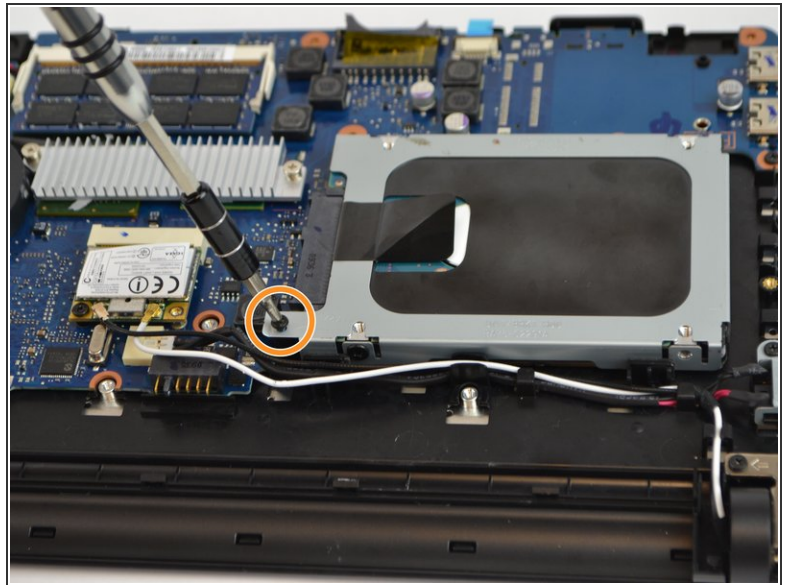
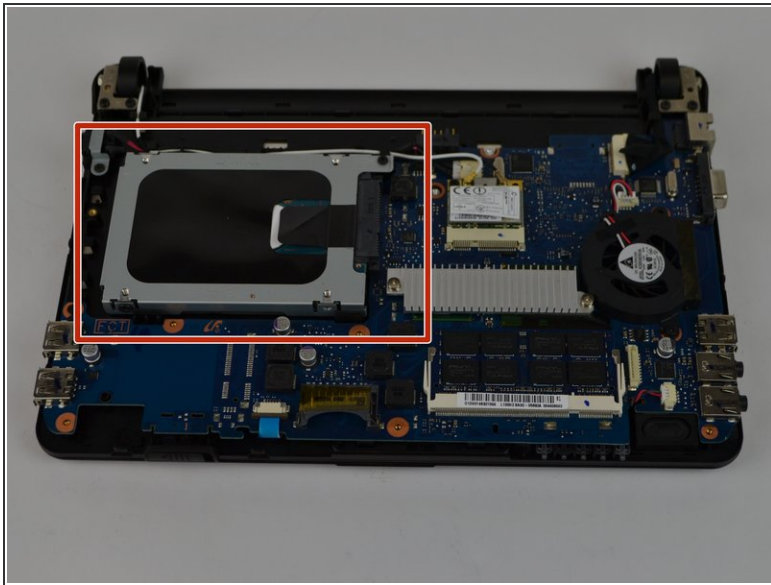
## Step 5



- With the plastic opening tool, carefully separate the back cover from the computer frame.
- Starting at one of the corners of the computer, work your way around the edge until you reach the other corner.
  - ⚠ Do not attempt to pry it open, putting too much force into one location might damage the computer.
- As you go around the sides of the computer, free the inside latches with the plastic opening tool.
- Once you have an opening, carefully use your hands to separate the back cover.

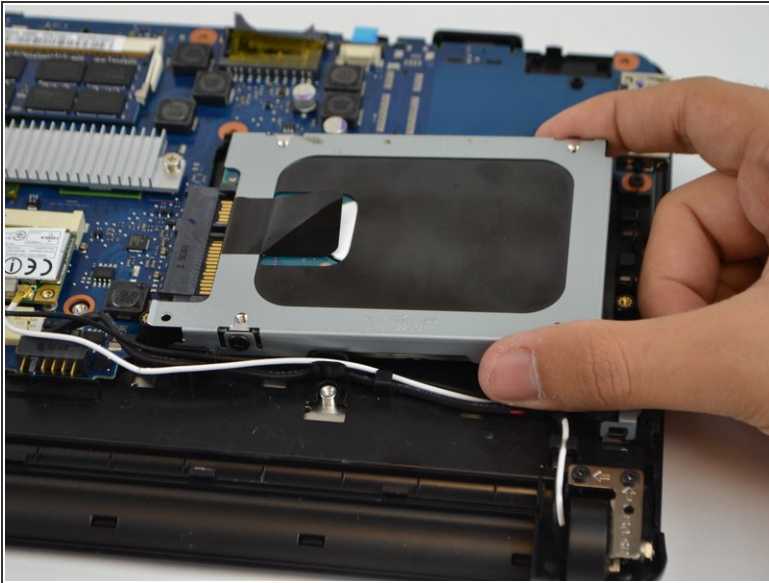


## Step 6



- Locate Hard Drive (red square)
- Using a Phillips 1 screw driver, remove the screw marked in the red circle.
- ⓘ The screw is a Phillips 1 (PH 1) with a length of 40 millimeters (mm)
- ⚠ Unscrew carefully to prevent losing or breaking pieces.

## Step 7



- Gently remove the hard drive.

To reassemble your device, follow these instructions in reverse order.