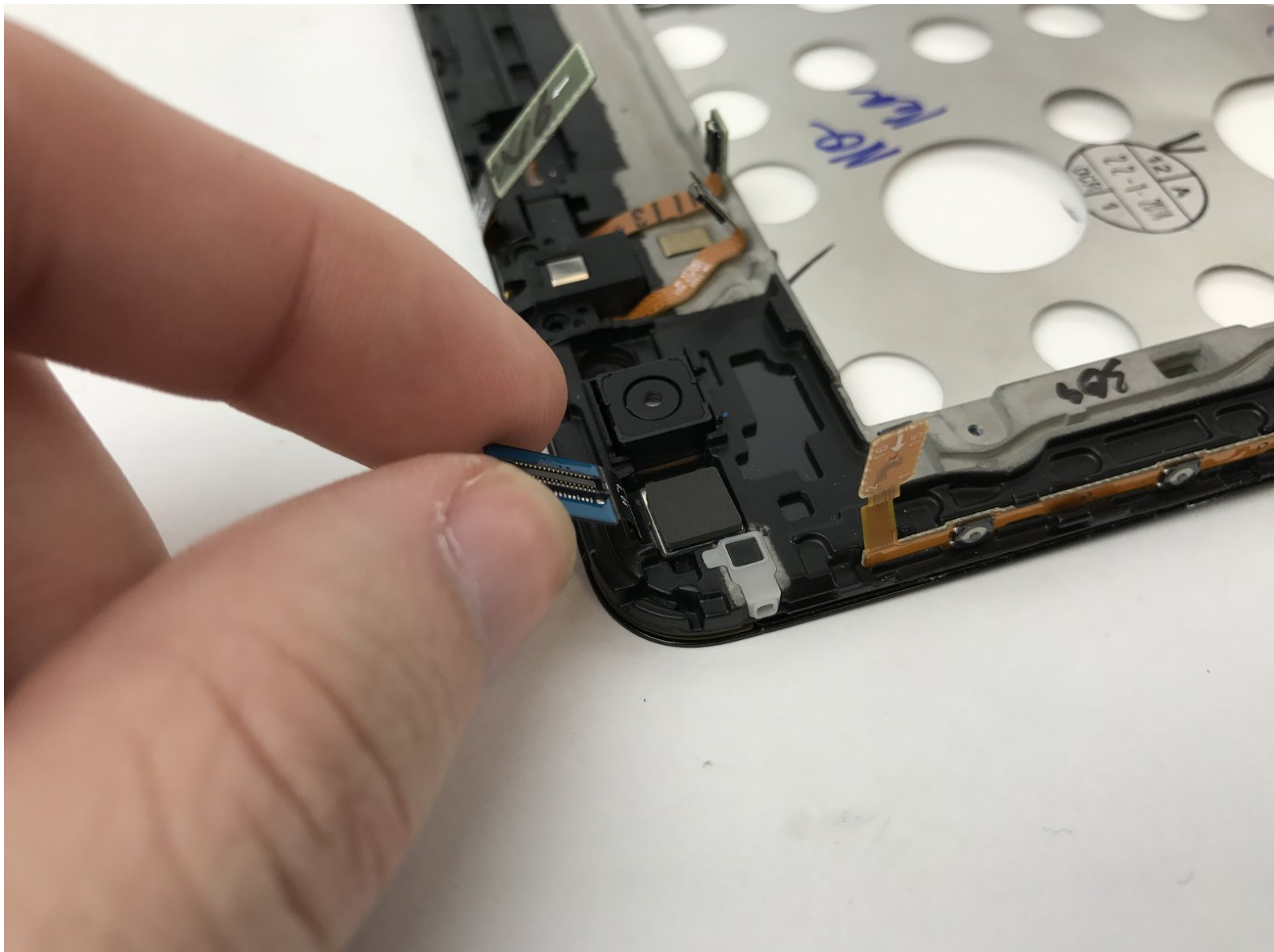




Samsung Galaxy Tab Pro 8.4 Back Camera Replacement

This guide will help you in the removal of your tablet's back camera.

Written By: Mario Montoya



INTRODUCTION

Is your tablet's camera not working or taking blurry pictures? No need to worry! This guide will help you replace the camera in a few easy steps.



TOOLS:

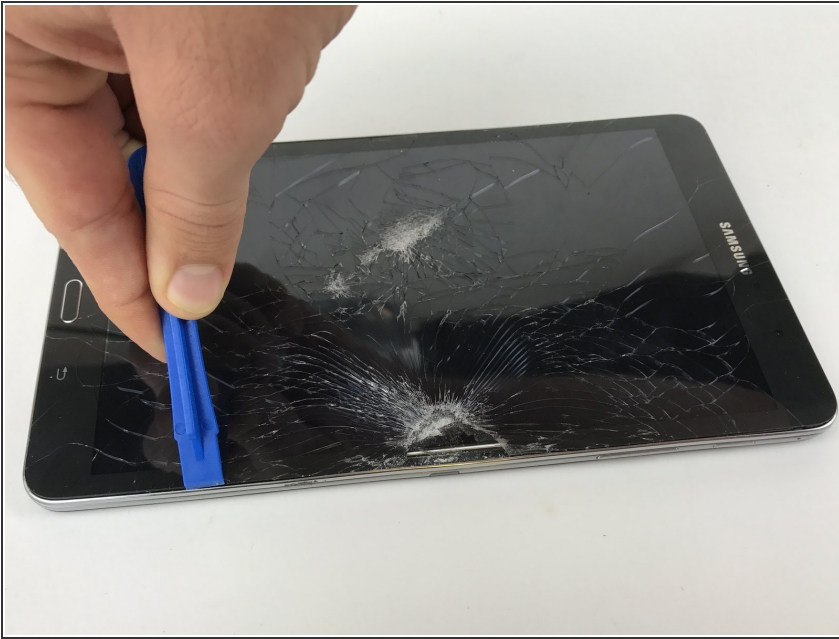
- [Phillips #000 Screwdriver](#) (1)
- [Spudger](#) (1)
- [iFixit Opening Tools](#) (1)



PARTS:

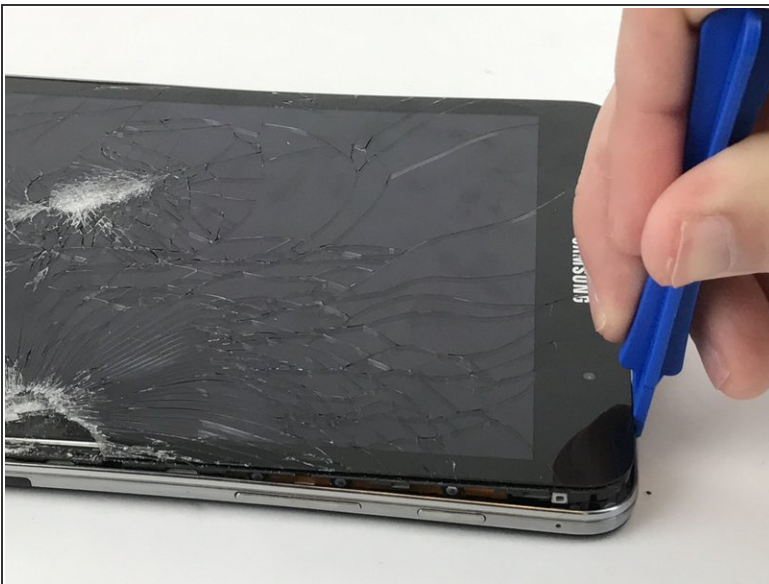
- [Galaxy Tab Pro 8.4 Rear Camera](#) (1)

Step 1 — Battery



- Begin by separating the back panel from the screen glass assembly using the plastic opening tool.
- Insert the plastic opening tool between the edge of the glass screen and the metal frame around the device.

Step 2



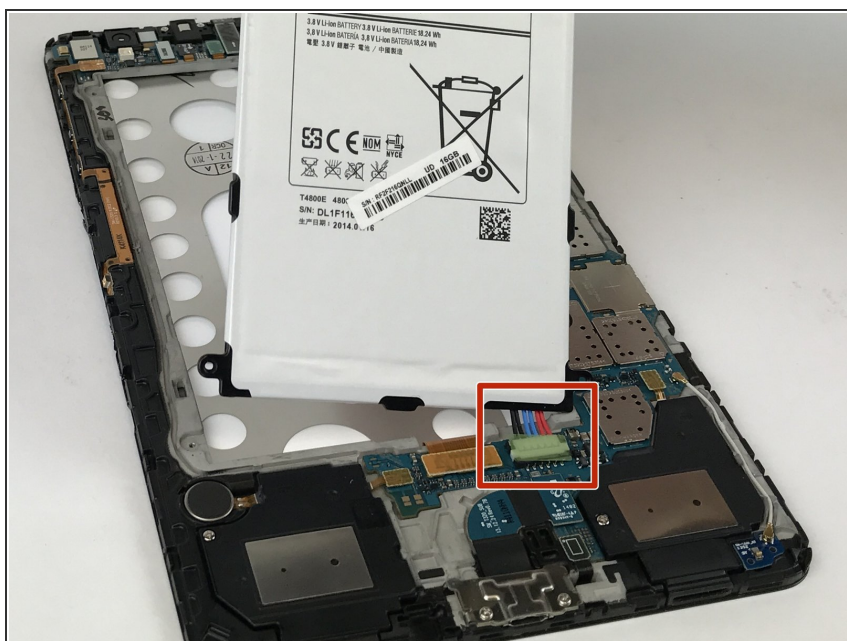
- Continue around the entire device until the back panel is completely separated from the screen.

Step 3



- Remove the four 2.5mm Phillips #000 screws.

Step 4



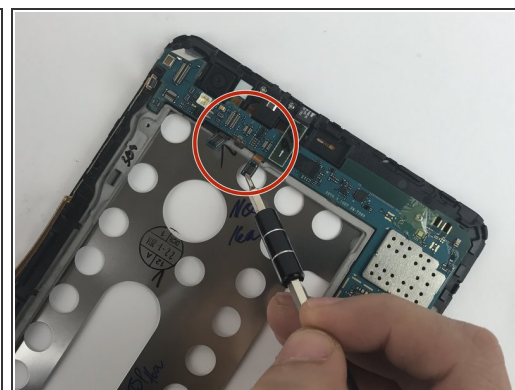
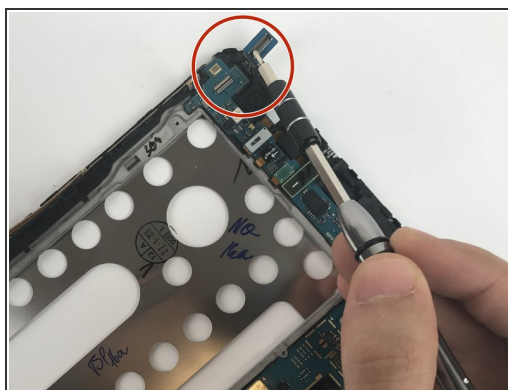
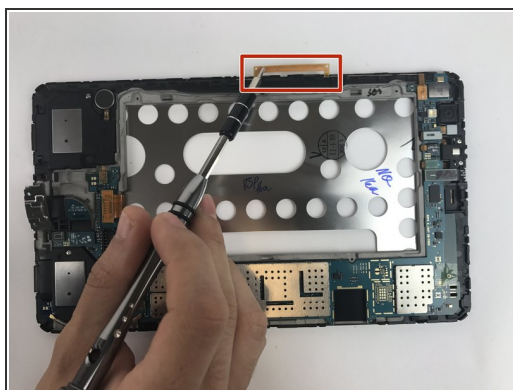
- Gently pull up on the plastic tab that has red, blue and black wires that connects the battery to the motherboard.

Step 5



- The battery should be completely disconnected and the new one can be installed.

Step 6 — Motherboard



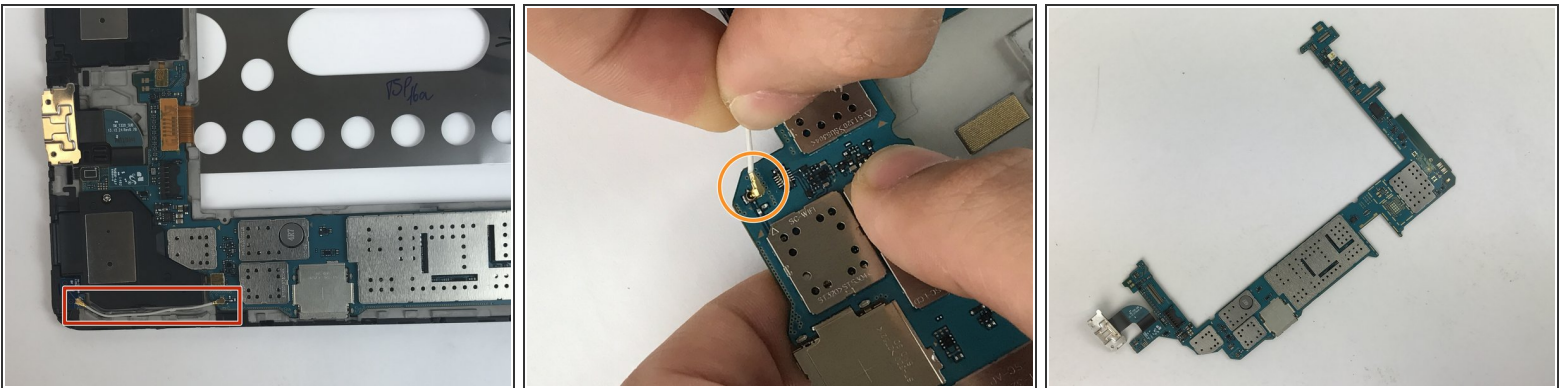
- Remove all the clips that are attached to the motherboard using your fingers or a nylon spudger.

Step 7



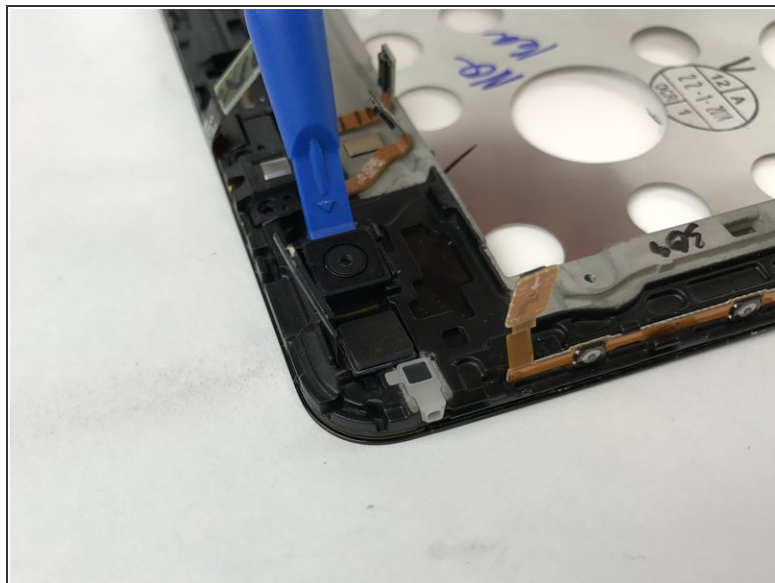
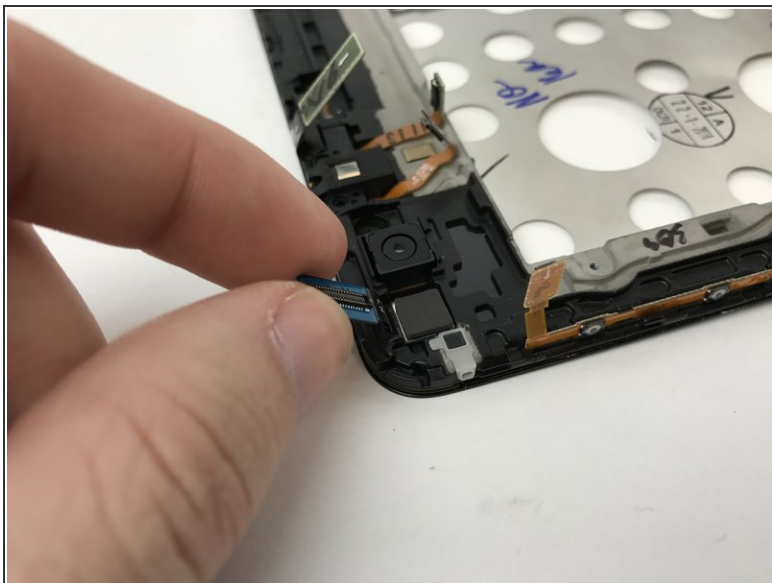
- There are four Phillips head screws (2.5mm) that need to be removed:
- Two on the charging port, which is the small metallic piece at the bottom of the device.
- There is one screw that is covered by a small green tape. The tape must be peeled off before the screw under can be removed.
- The last screw is found on a speaker at the bottom right of the device. Once the screw is removed, the speaker must be removed as well.

Step 8



- There is a small wire that connects the motherboard to the bottom right corner.
- Gently pull the end of the wire that attaches the motherboard to the device until the wire is disconnected.
- After the cord is disconnected, the motherboard can be removed from the tablet by simply lifting it from the device.

Step 9 — Back Camera



- Once the motherboard has been removed, use a plastic opening tool to gently push the camera out of its place.

Step 10



- Using your fingers, gently pull the camera out of its place.

To reassemble your device, follow these instructions in reverse order.