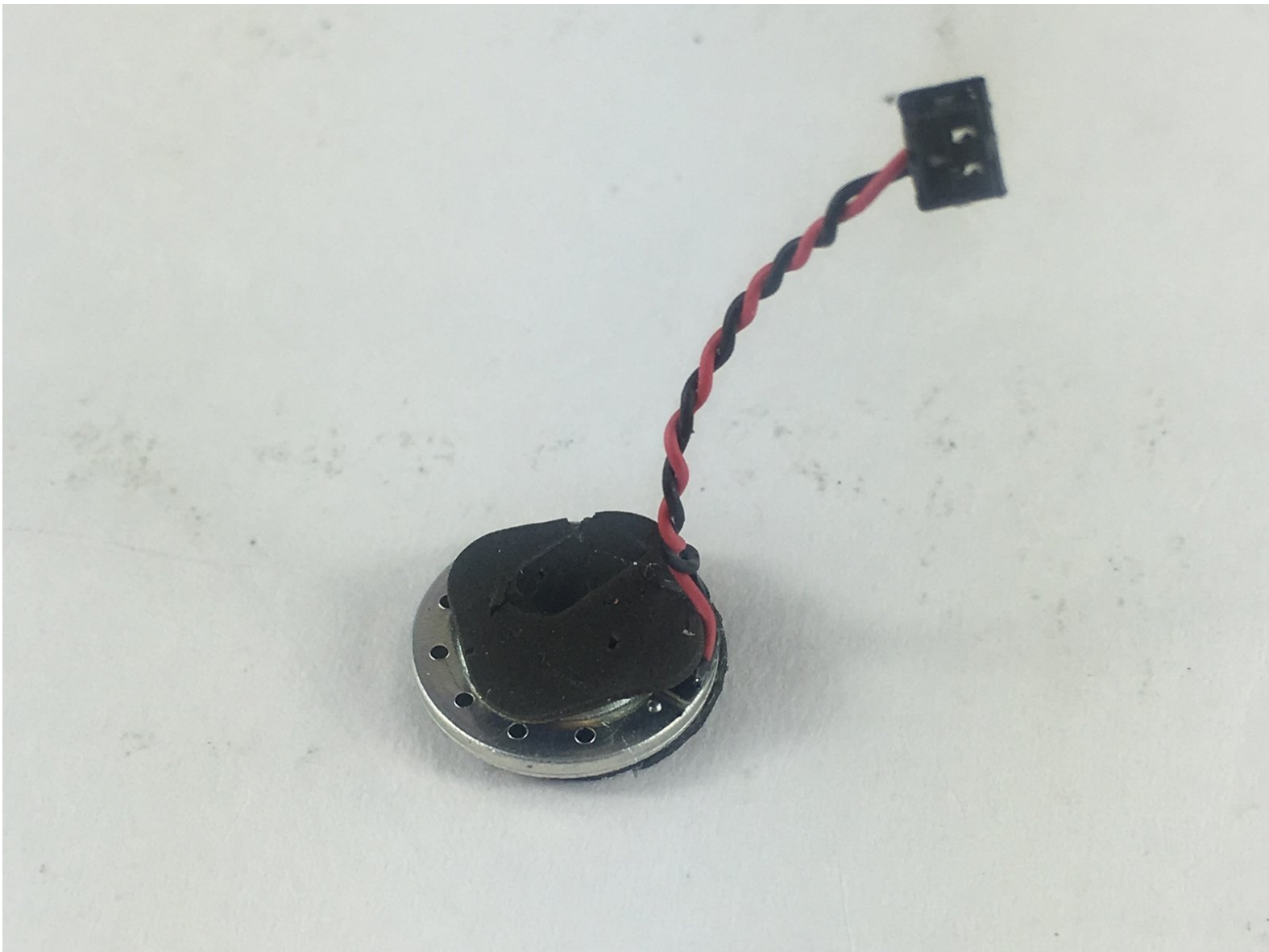




# Samsung HMX-W200 Speaker Replacement

This replacement guide will show the user how to replace the speaker in the Samsung HMX-W200.

Written By: Haya Barakat



## INTRODUCTION

To begin the replacement process for the speaker, the user will need to remove the outer casing. Then remove the motherboard, this will allow them to get to the speaker.



### TOOLS:

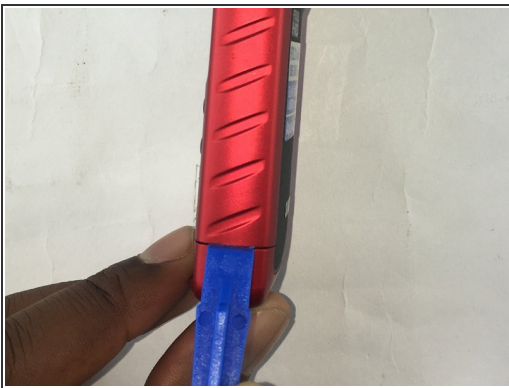
- [Tweezers](#) (1)
  - [Phillips #00 Screwdriver](#) (1)
  - [iFixit Opening Tools](#) (1)
-

## Step 1 — Outer Case



- Remove the 5.00mm screw on the right of the LCD display towards the bottom of the device by using a Phillips #00 screwdriver.

## Step 2



- Use the plastic opening tool to separate and remove the bottom red casing. Do this by, pushing the tool into the seam and prying up the red casing as you move along the edges.
- ⓘ Make sure to separate all the corners before removing the red casing.

## Step 3



- Using the plastic opening tool, separate and pull away the red casing on the right of the LCD screen.
- ⓘ Make sure to separate all the corners before removing the red casing.



## Step 4



- To access the HDMI slot, move slider towards the bottom of the casing on the other side of the camcorder. The lid casing will lift up upon doing so.
- After accessing the HDMI slot you will find a 5.00mm screw. Using a Phillips #00 screwdriver, remove the screw.

## Step 5



- Using the plastic opening tool, separate and pull away the red casing to the left of the LCD screen.
- ⓘ Make sure to separate all the corners before removing the red casing.

## Step 6



- Remove the six 5.00mm screws by using a Phillips #00 screwdriver.

## Step 7



- Lift the two plastic tabs on the left side of the LCD screen and the single one on the right side on the black casing to open the device.

## Step 8



- Separate the front and back casing.



## Step 9 — Motherboard



- Once inside the device, find the half that contains the motherboard of the device.

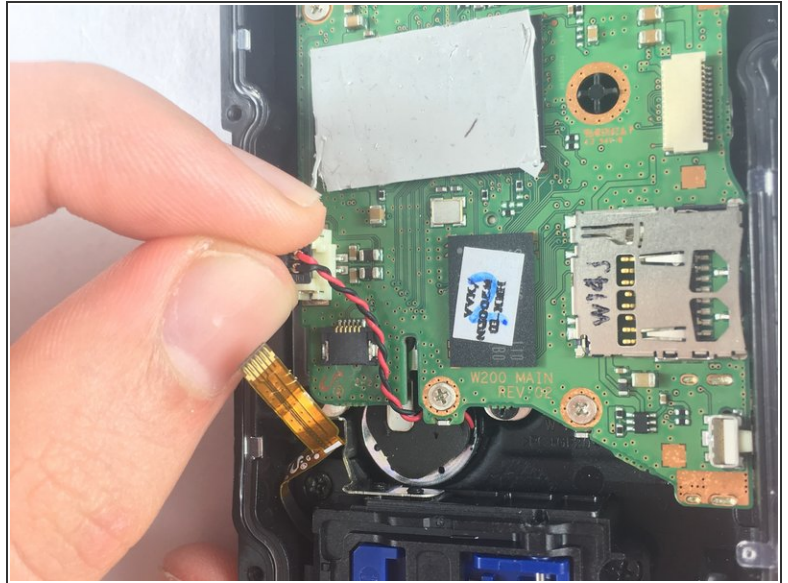
## Step 10



- Use precision tweezers to gently pull out the USB connection from the motherboard.



## Step 11



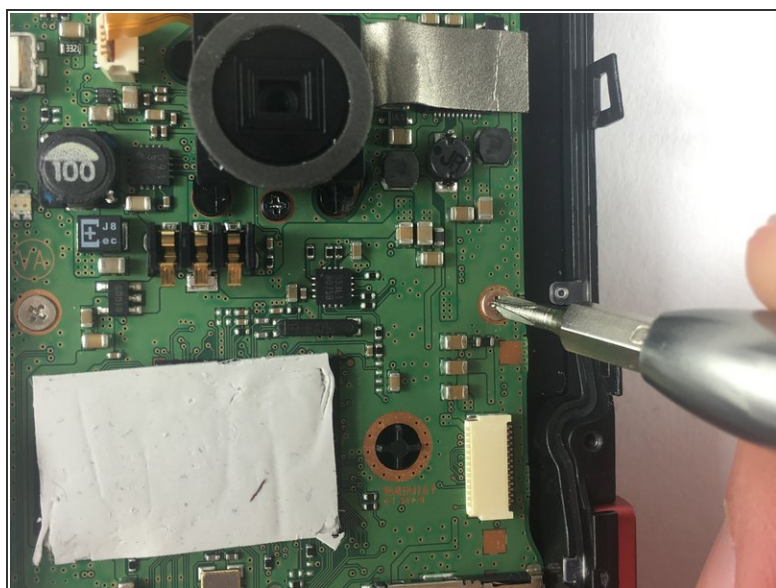
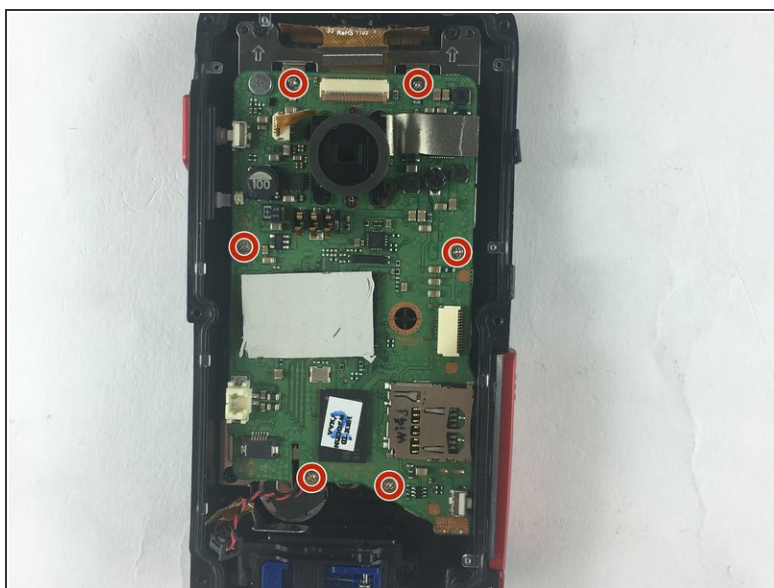
- Remove the audio connector from the motherboard (red and black cables).
  - Using the plastic opening tool, lift the connectors from all sides before pulling it with your fingers.
- ⚠ Do not pull off the connectors by the cables. This could damage the connection from the speaker to the motherboard.

## Step 12



- Use precision tweezers to remove the connector joining the LCD and the motherboard.

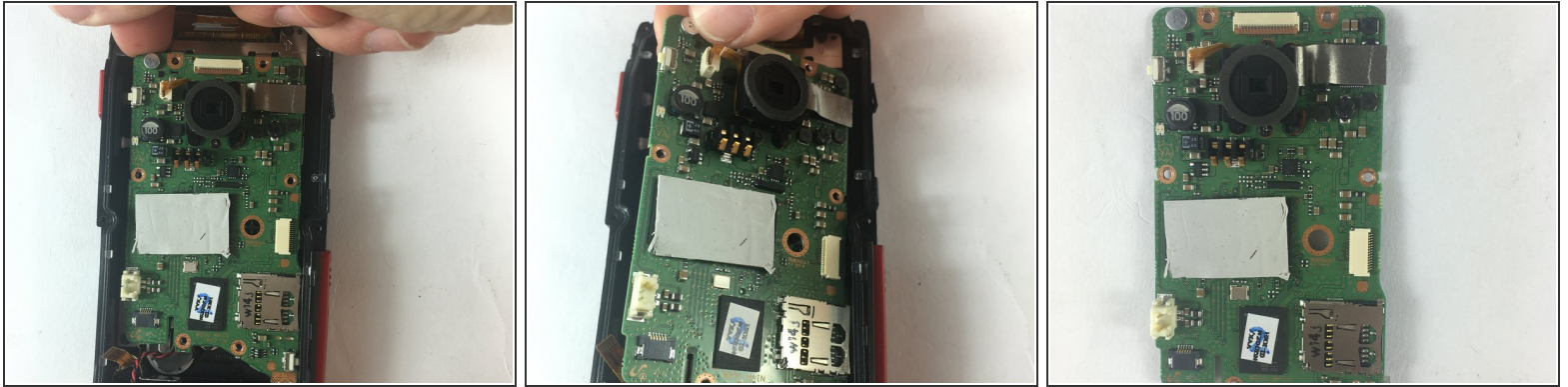
## Step 13



- Remove the six 2.00mm screws with Phillips #00 screwdriver.

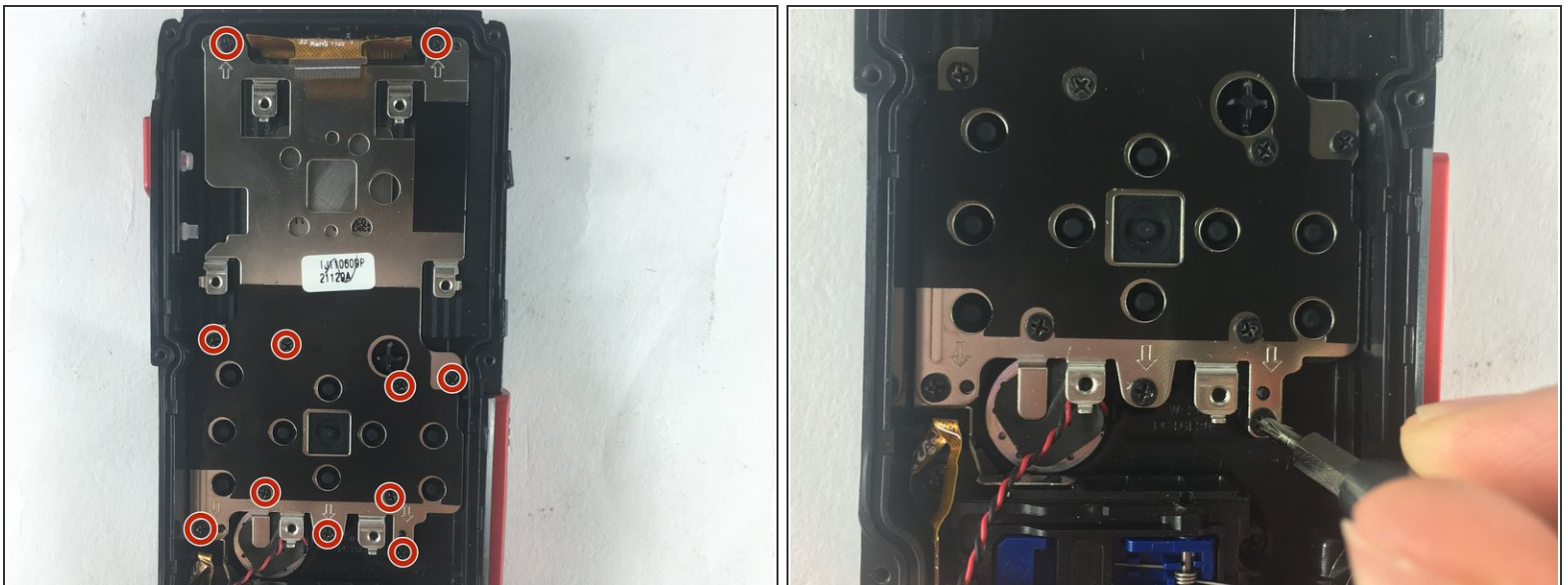


## Step 14



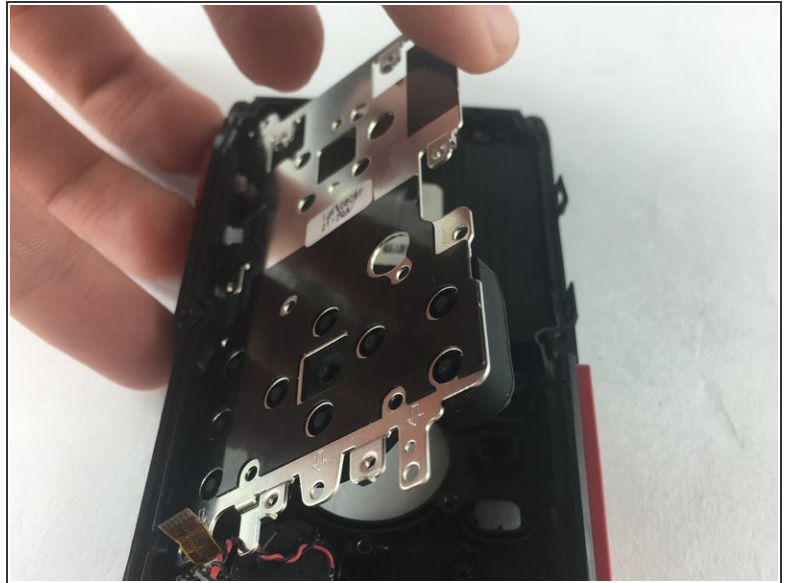
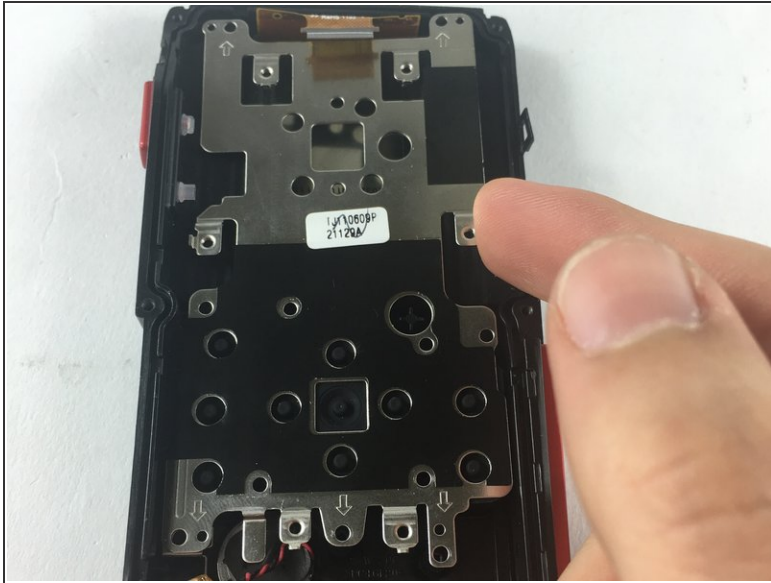
- Lift motherboard from top left side and pull away gently.

## Step 15 — Speaker



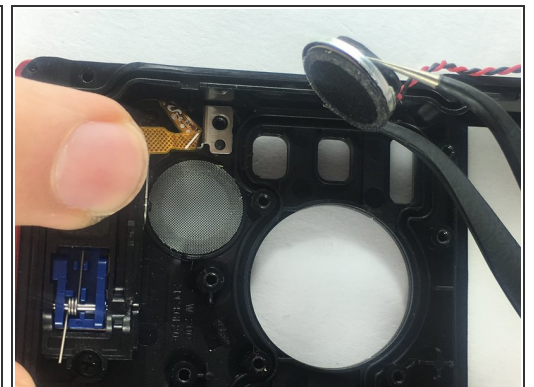
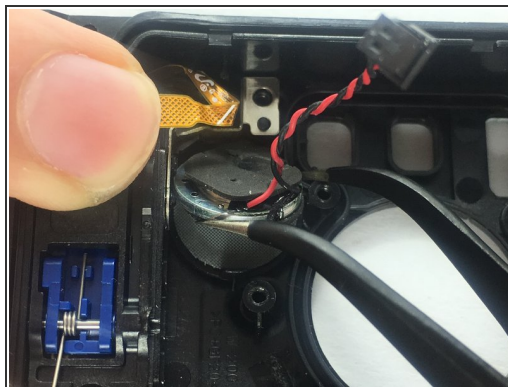
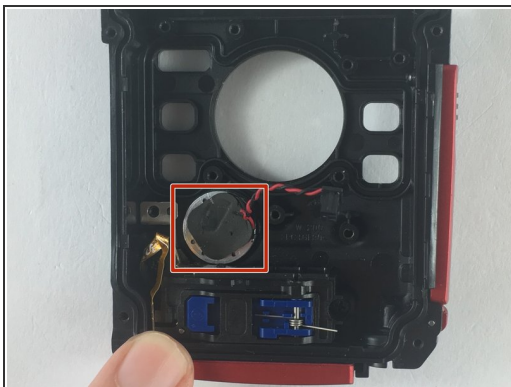
- Under the motherboard there is a metal plate that has to be removed.
- Use a Phillips head #00 screwdriver to remove eleven 5mm screws.

## Step 16



- Lift the metal plate by pushing it up from the top right edge of the plate.

## Step 17



- Use precision tweezers to remove the speaker from the casing.

**i** It will be a bit difficult because the speaker is glued to the casing.

**!** Be sure to only pull the speaker and not the white screen under it. This screen is what allows the speaker to be waterproof and if it gets damaged, the device will no longer be waterproof.

To reassemble your device, follow these instructions in reverse order.