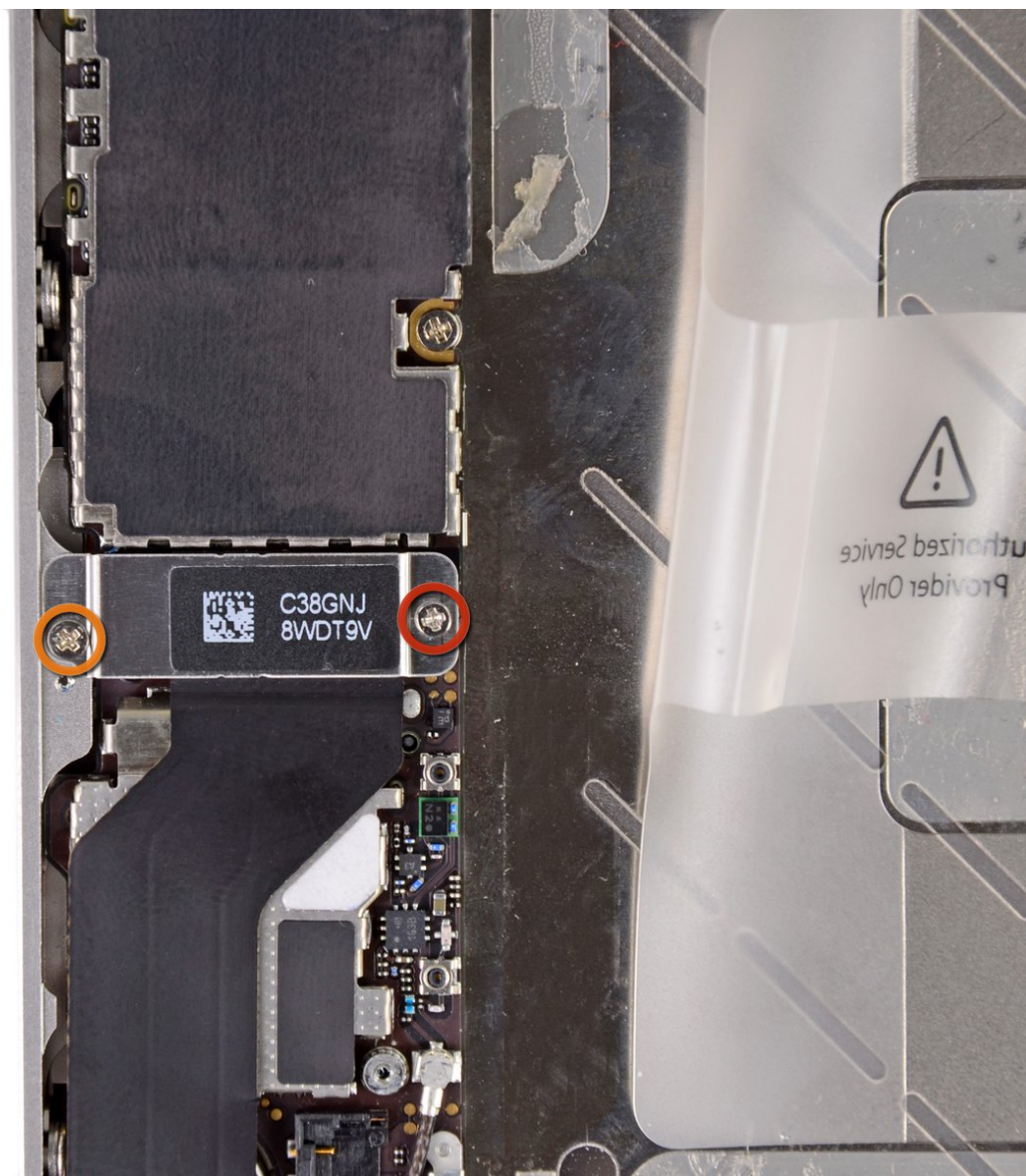




# iPhone 4S Dock Connector Cable Replacement

Internal prerequisite.

Written By: Walter Galan



---

# INTRODUCTION

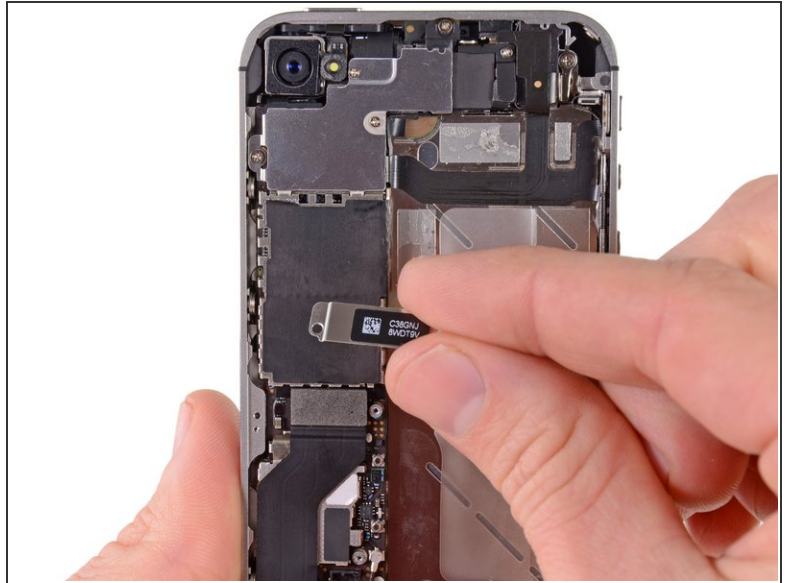
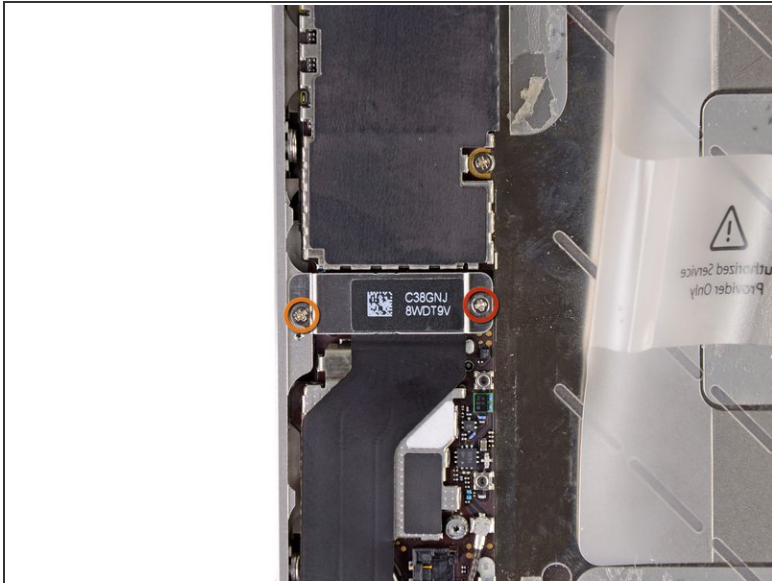
Internal prerequisite.



## TOOLS:

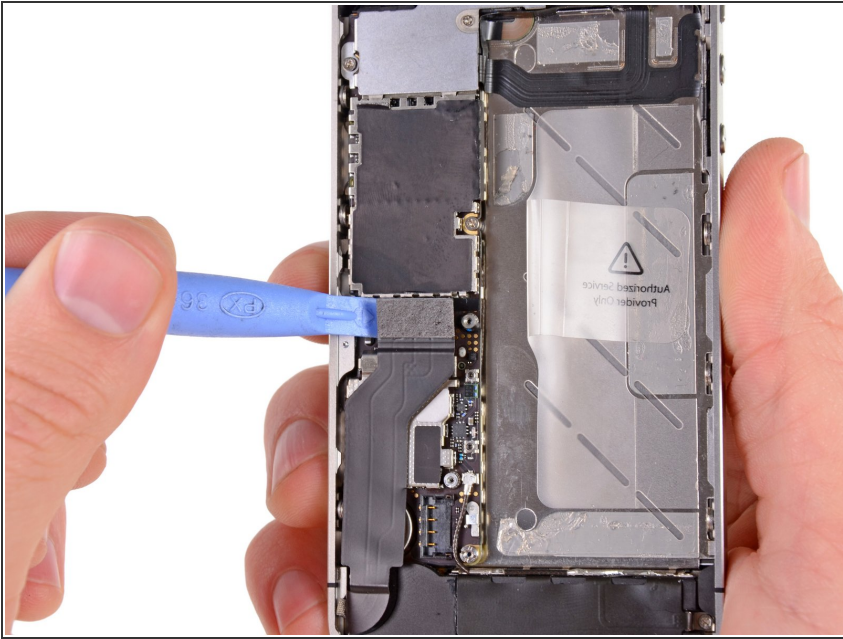
- [Phillips #000 Screwdriver](#) (1)
  - [iFixit Opening Tools](#) (1)
-

## Step 1 — Dock Connector Cable



- Remove the following screws securing the dock connector cable cover to the logic board:
  - One 1.5 mm Phillips screw
  - One 1.2 mm Phillips screw
- Remove the metal dock connector cable cover.

## Step 2



- Use the edge of a plastic opening tool to pry the dock cable up from its socket on the logic board.

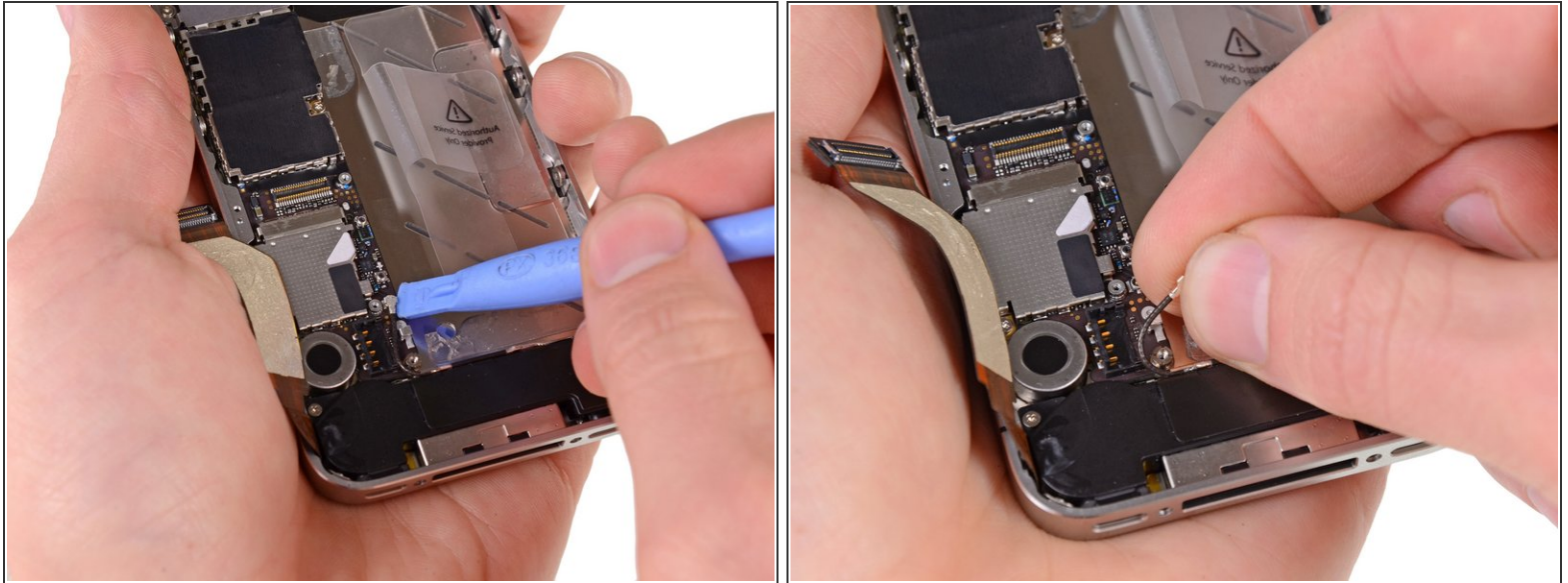
## Step 3



- Peel the dock connector cable off the adhesive securing it to the logic board and the side of the speaker enclosure.



## Step 4



- Use the edge of a plastic opening tool to pry the cellular antenna cable up from its socket on the logic board.
- De-route the cellular antenna cable out from under the metal fingers attached to the logic board.

To reassemble your device, follow these instructions in reverse order.