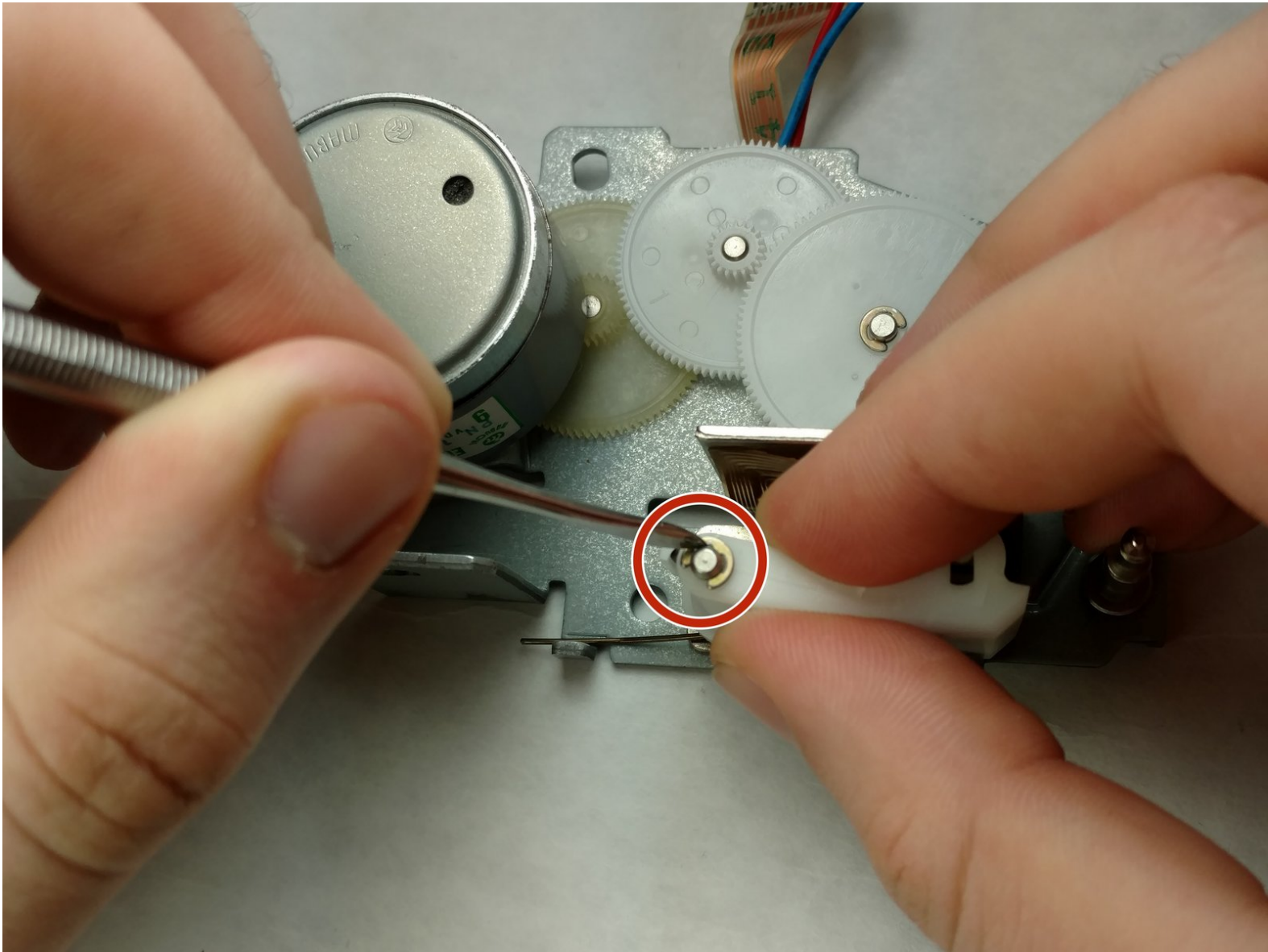




Brother PT-110 Print Roller Lever Replacement

This guide will show you how to replace the plastic print roller lever.

Written By: Kimberly Larsen



INTRODUCTION

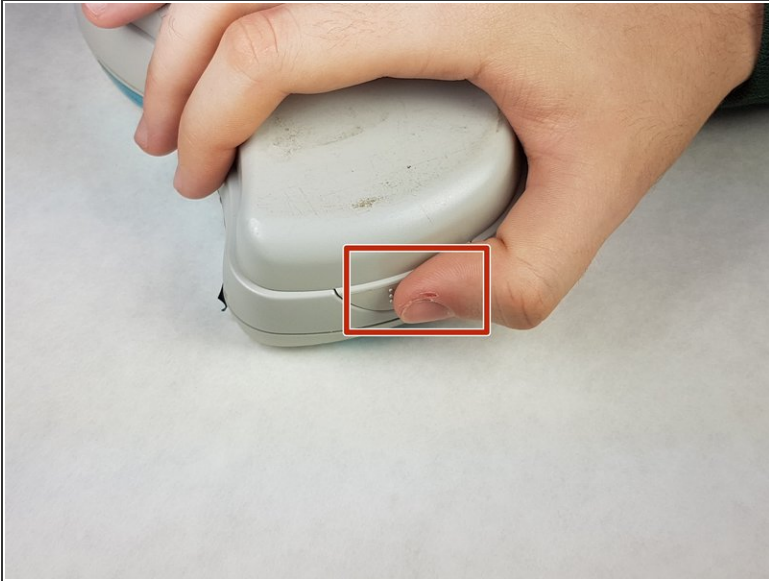
The entire motor/gear assembly housing should be removed before starting.



TOOLS:

- [Phillips #1 Screwdriver](#) (1)
 - [Metal Spudger](#) (1)
-

Step 1 — Batteries



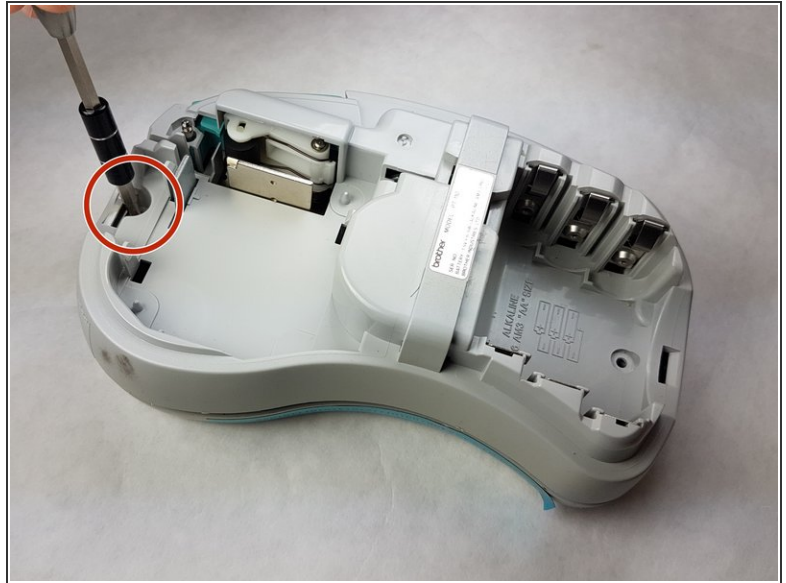
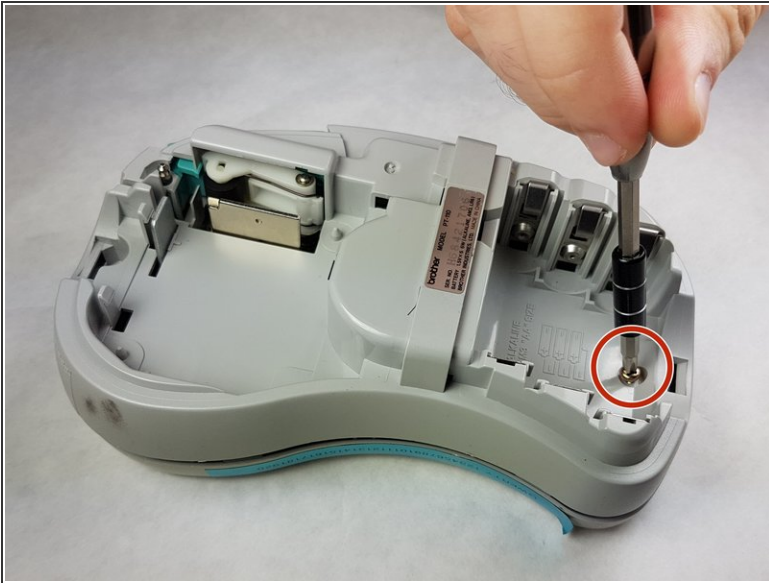
- Push on the side of the cover, and remove it.

Step 2



- Remove the batteries.

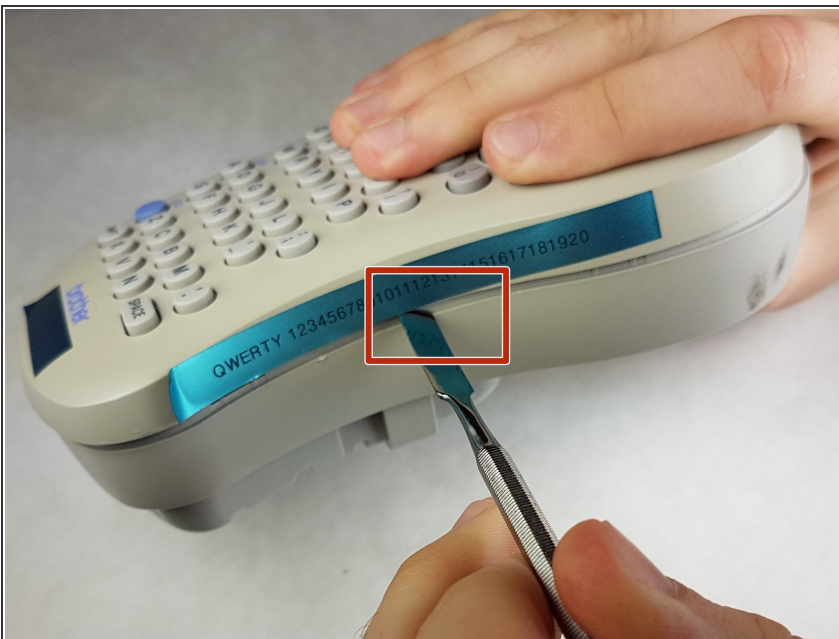
Step 3 — Back Plate



- Unscrew the two 9 mm Phillips #1 screws from the top and bottom.

i Total: 2 x Screws

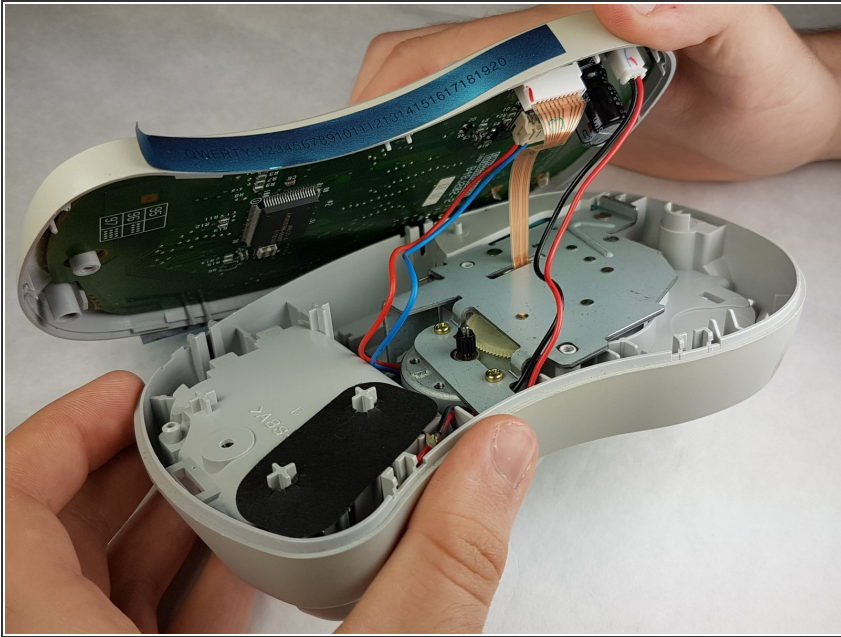
Step 4



- First: To separate the top cover from the body, insert a spudger between the two halves.
- Gently twist the spudger until the two halves separate. Do this in multiple spots around the perimeter of the cover to distribute the pressure.

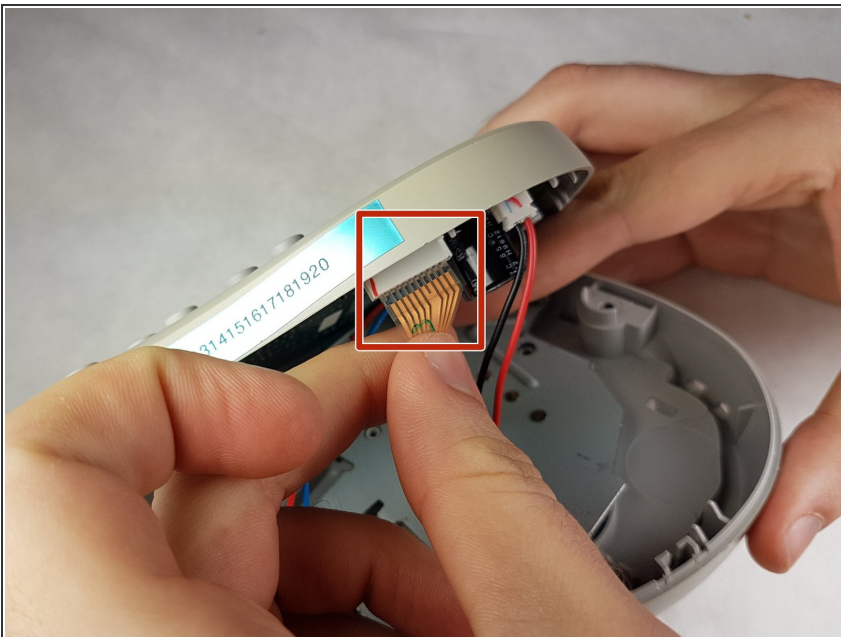
⚠ DO NOT PULL HALVES APART.
There are wired connections inside that must be disconnected before halves can be fully separated.

Step 5



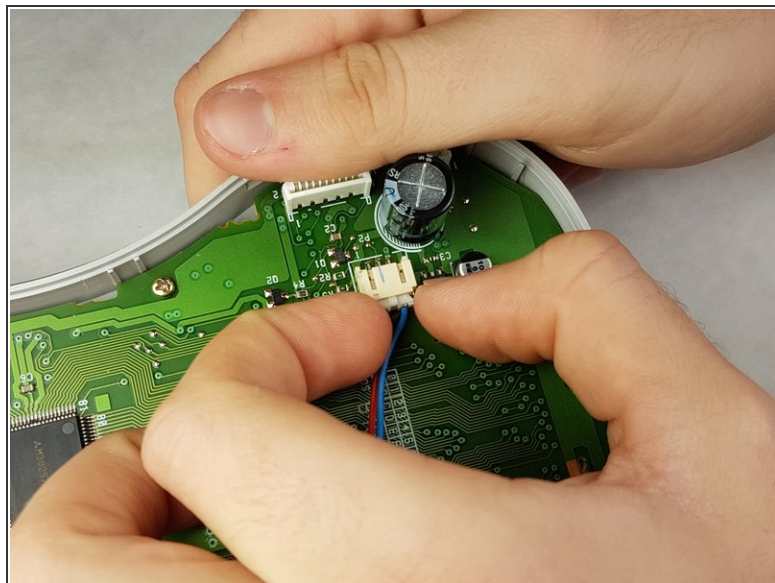
⚠ Gently separate the two covers, ensuring wires are not taut.

Step 6



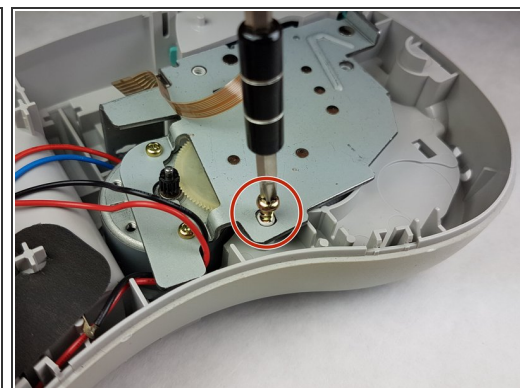
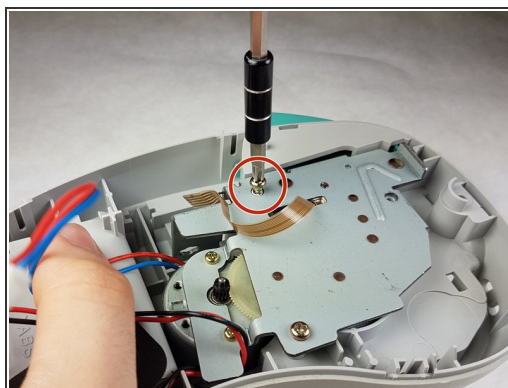
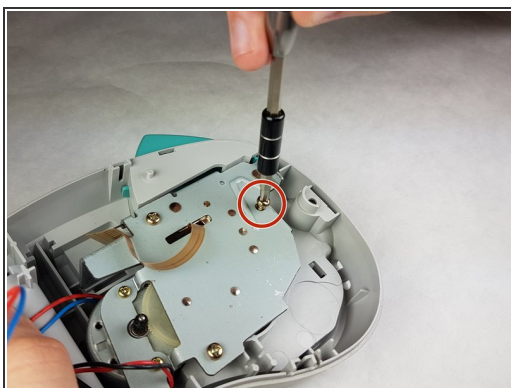
- Gently grasp the ribbon wire and top cover, then gently pull the ribbon wire out of its connection.

Step 7



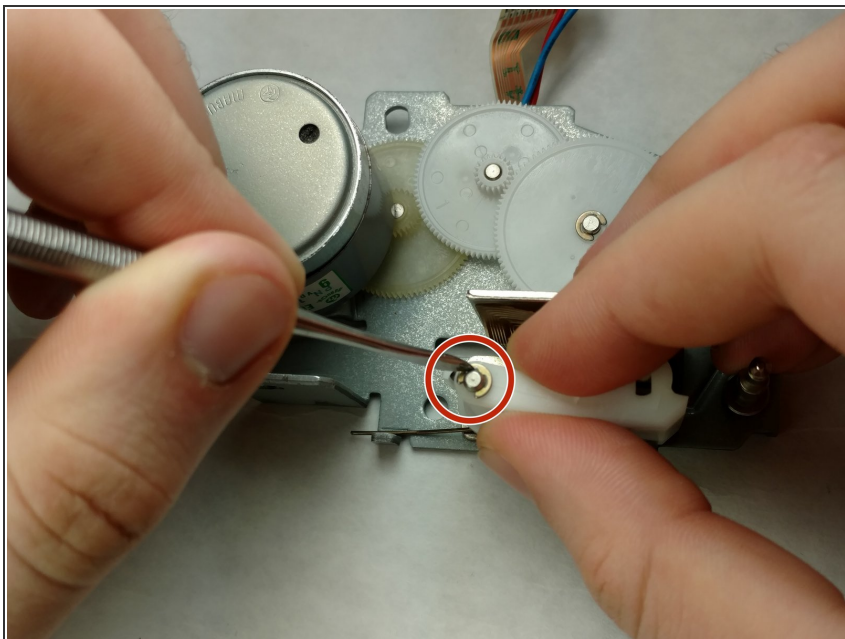
- Carefully pinch the top of the connector.
 - Pull perpendicular to the device until the wire is disconnected.
- i** It may require more force than expected to disconnect the wires.

Step 8



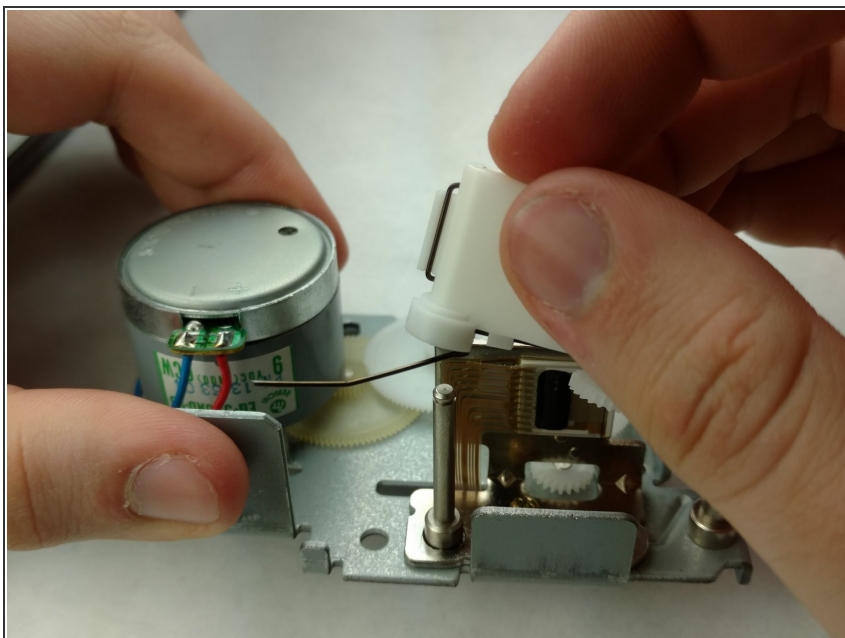
- Unscrew the three 9 mm Phillips #1 screws shown.
- i** Total: 3 x Screws

Step 9 — Print Roller Lever



- Using the metal spudger, swivel the pin so that the print roller lever loosens.

Step 10



- Gently pull the print roller lever out.

To reassemble your device, follow these instructions in reverse order.