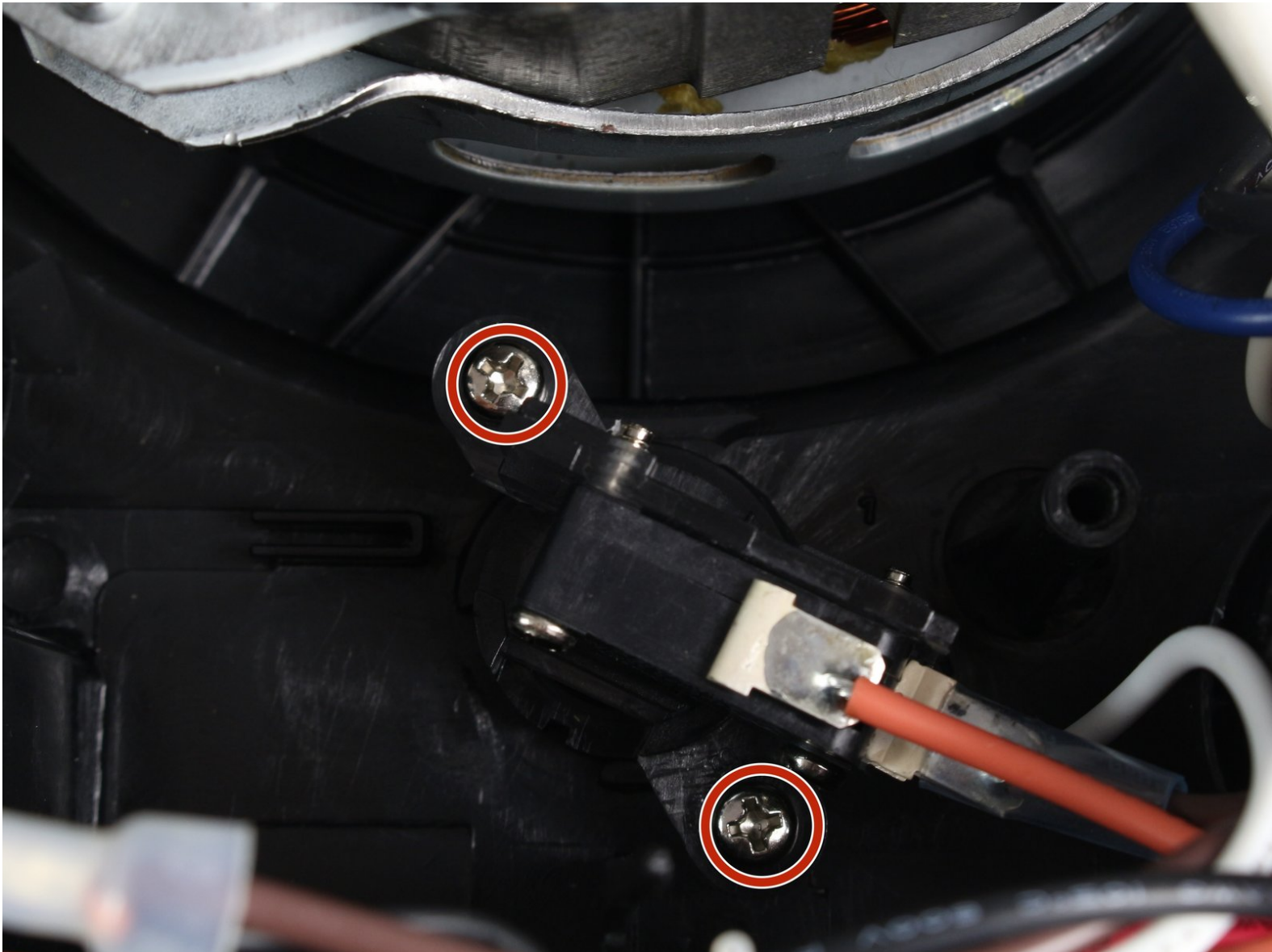




Cuisinart DFP-14BCN Safety Switch Replacement

Replace your faulty safety switch to keep your blades from spinning at the wrong time.

Written By: Maddie McCool



INTRODUCTION

The safety switch keeps the food processor's blades from accidentally spinning while the device is on. A broken safety feature is potentially harmful. Removing and replacing this component requires soldering. Check out this [soldering guide](#) for instructions.



TOOLS:

- [Phillips #2 Screwdriver](#) (1)
 - [Soldering Iron](#) (1)
-

Step 1 — Bowl



i Unplug your food processor before starting any disassembly.

- Remove the small pusher by rotating it clockwise and lifting up.

Step 2



- Remove the large pusher by grabbing its sides and pulling up.

i There may be a clicking sound from the safety feature being disengaged in this step.

Step 3



- Remove the lid from the bowl by turning it clockwise and lifting.

Step 4



- Take out the blades by grabbing the plastic center piece and lifting up.

⚠ Avoid contact with blades as they are extremely sharp.

Step 5



- Position the handle of the bowl so that it is on your left.
- Grab the handle and push clockwise. Lift up the bowl to remove it.

Step 6 — Back Casing



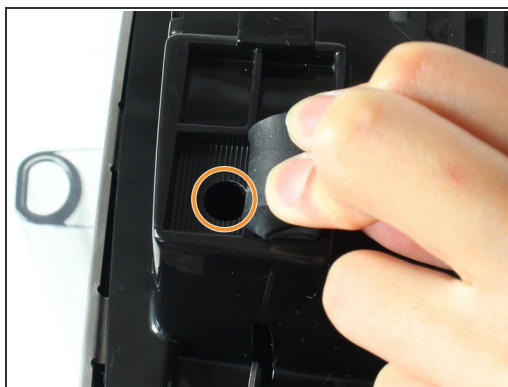
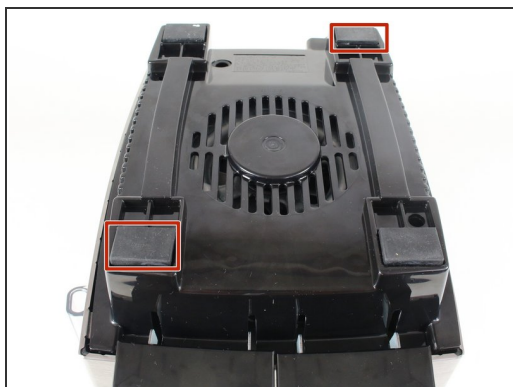
- Turn the food processor's base upside down by lifting it up and turning it over.
- Position the base so that the on and pulse buttons are facing you.
- Place the base on top of the food processor's bowl to keep the base from wobbling while you work on it.

Step 7



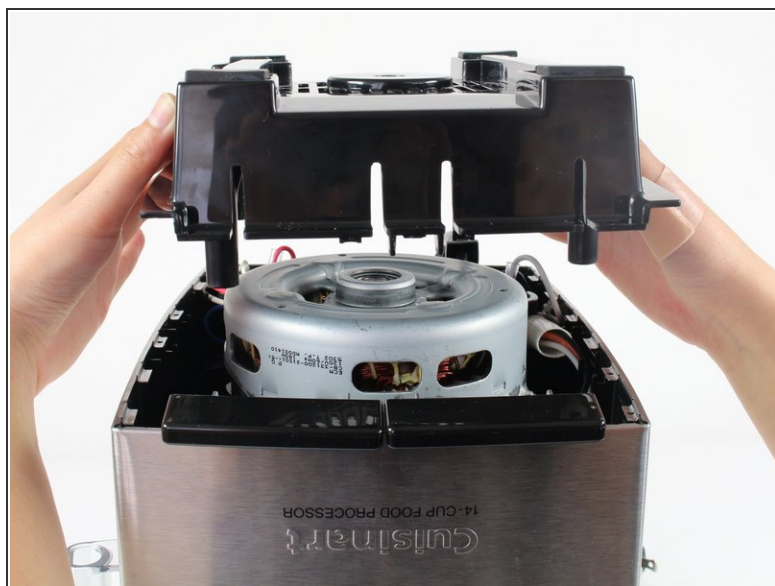
- Remove the two 13.0mm screws that hold down the casing with a Phillips #2 screwdriver.

Step 8



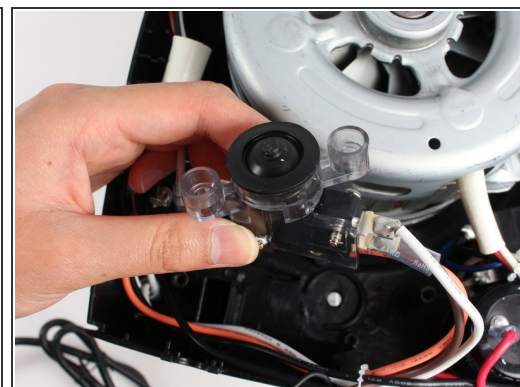
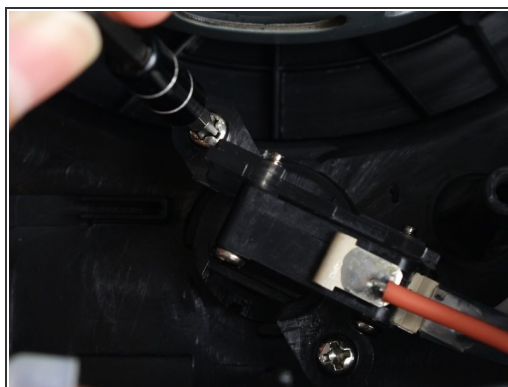
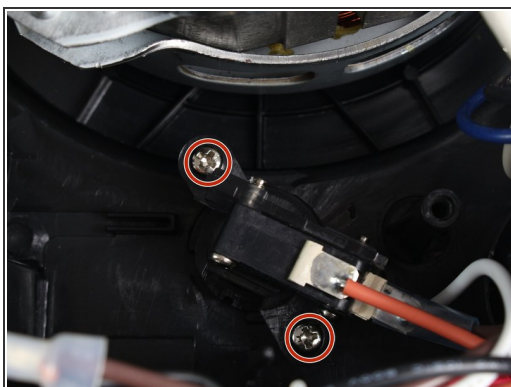
- Lift up the front left and the back right rubber feet by pulling back the rubber with your fingers.
- Remove the 13.0mm screw under each rubber foot with a Phillips #2 screwdriver.

Step 9



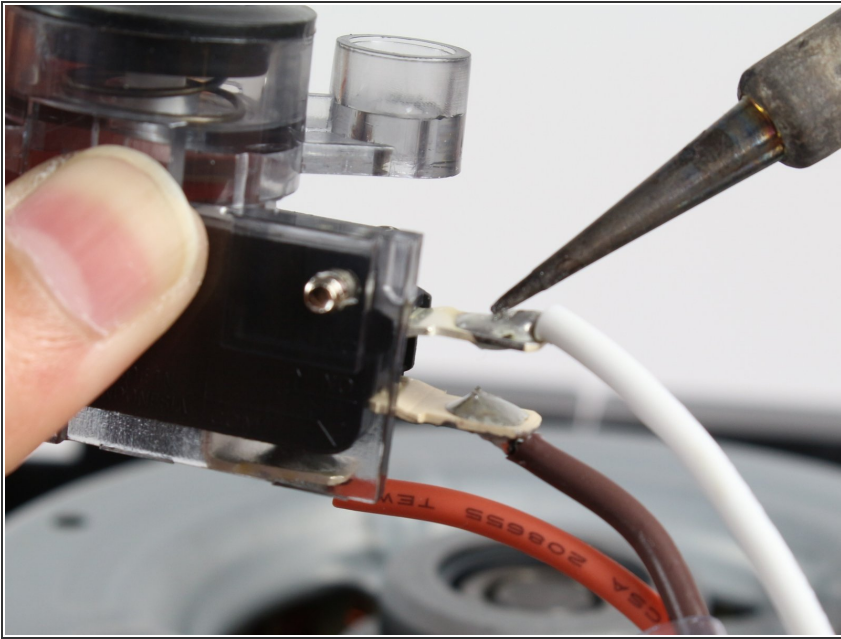
- Lift off the back casing by raising it upward.

Step 10 — Safety Switch



- Orient the device so that the power cord is facing you.
- Remove the two 10.0mm screws that hold down the safety switch with a Phillips #2 screwdriver.
- Pull up on the safety switch with your hands to lift it out of the casing.

Step 11



- Slide the plastic covering off of the brown wire connection to the safety switch by pulling gently.
- Use a soldering iron to remove the solder from the safety switch for the white, brown and orange wires.
- ⓘ Follow this [soldering guide](#) for help with desoldering.
- Remove the safety switch once all of the wires are desoldered.
- ★ For reassembly, you will need to solder the white, brown, and orange wire to the new connections.

To reassemble your device, follow these instructions in reverse order.