



Magic Bullet NutriBullet Pro Disassembly

This is a prerequisite guide to explain how to expose the portion of the Magic Bullet NutriBullet Pro that contains many of the electrical components.

Written By: Brett Crews



INTRODUCTION

This is a prerequisite guide to explain how to expose the internal components of the Magic Bullet NutriBullet Pro. To determine what is wrong with your Nutribullet follow this link to the [troubleshooting guide](#).



TOOLS:

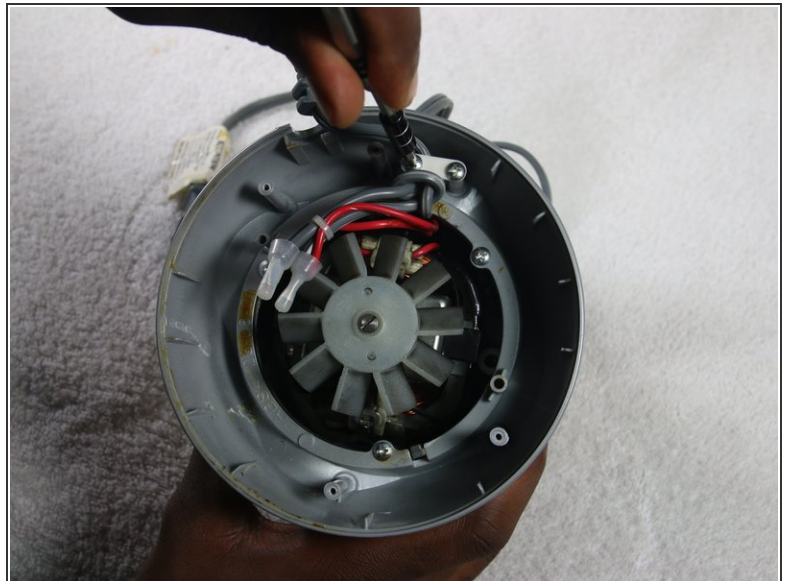
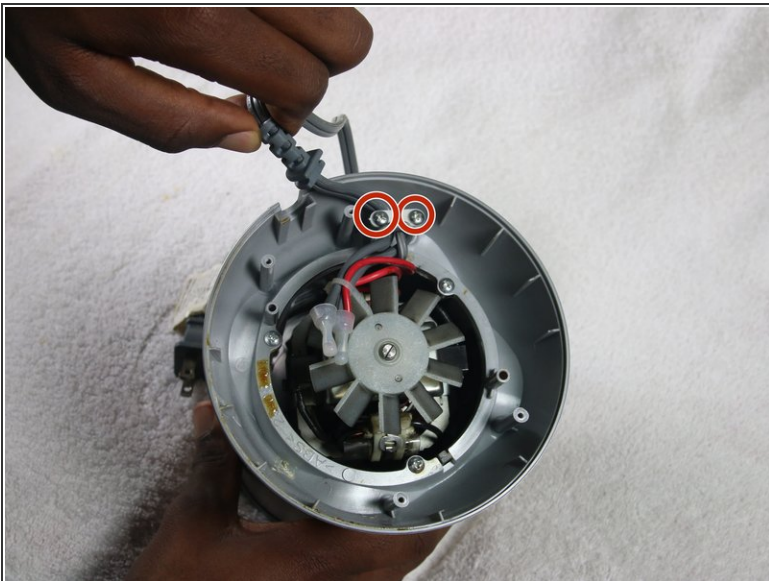
- [Phillips #1 Screwdriver](#) (1)
 - [Tweezers](#) (1)
 - [Phillips #2 Screwdriver](#) (1)
-

Step 1 — Magic Bullet NutriBullet Pro Disassembly



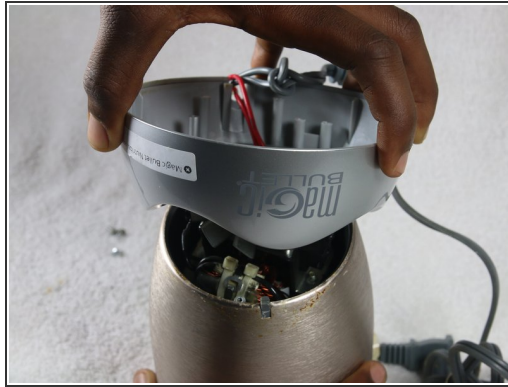
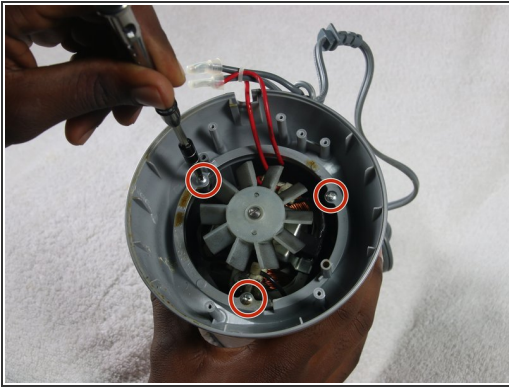
- To start the disassembly of the Magic Bullet NutriBullet Pro you will begin from the bottom.
- Flip the device over to the bottom.
- Unscrew the four 1 cm screws using #2 Phillips Head Screwdriver.
- Remove the loose bottom portion of the device by pulling up from the bottom.

Step 2



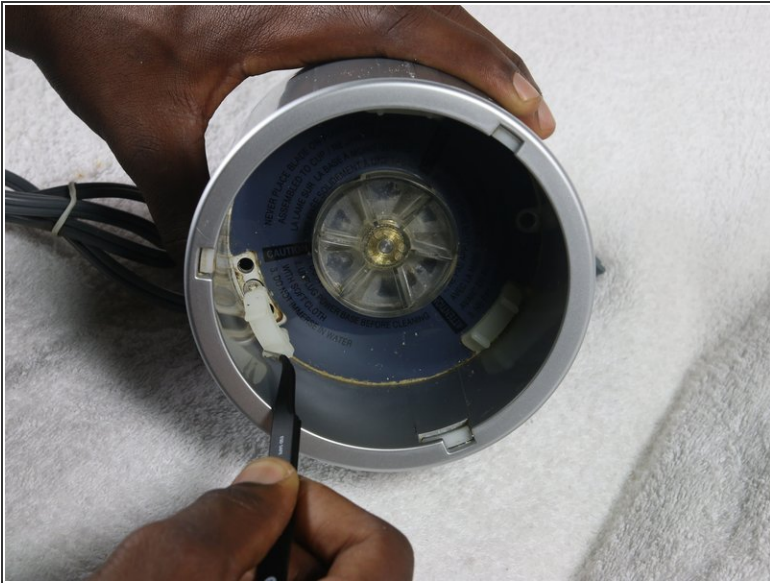
- Unscrew the two 1 cm screws holding down the power cord using the #2 Phillips Head Screwdriver.

Step 3



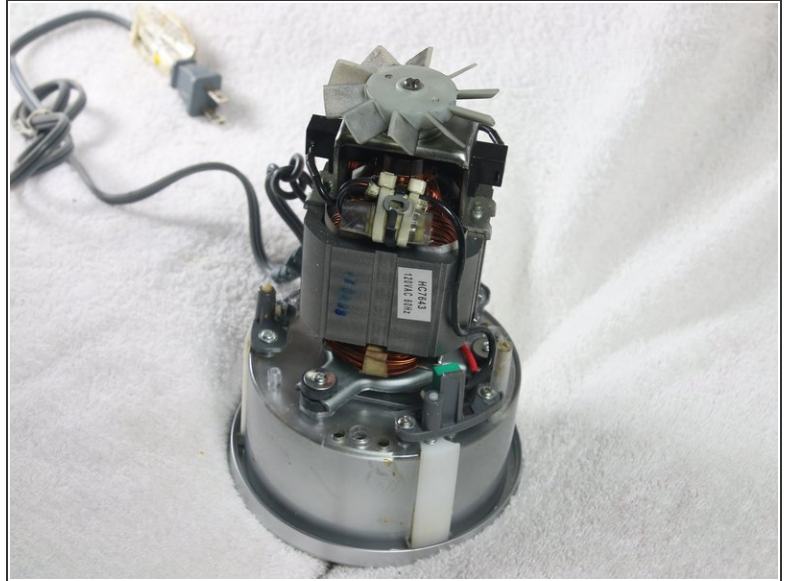
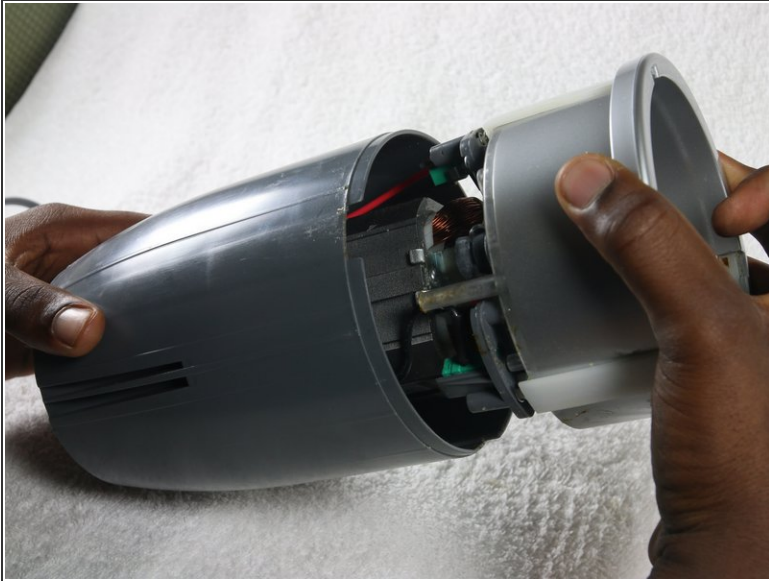
- Unscrew the three 1 cm screws on the device circled on the screws pictures using the #1 Philips Head Screwdriver.
- Lift off the grey plastic piece off.
- Slide off the silver metal piece.

Step 4



- Flip the device over.
- Remove the three rubber seals covering the screws by pulling the components upward with the tweezers.
- Unscrew the three 16 mm screws using the #2 Phillips Head Screwdriver.

Step 5



- Pull off the casing from the device.