



Insignia NS-B4111 Speaker Replacement

Replace the speakers to restore sound to the device.

Written By: Kristin Yoshioka



INTRODUCTION

This guide will teach you how to replace your device's speakers.



TOOLS:

- [Soldering Iron](#) (1)
 - [64 Bit Driver Kit](#) (1)
 - [iFixit Opening Tools](#) (1)
-

Step 1 — Battery



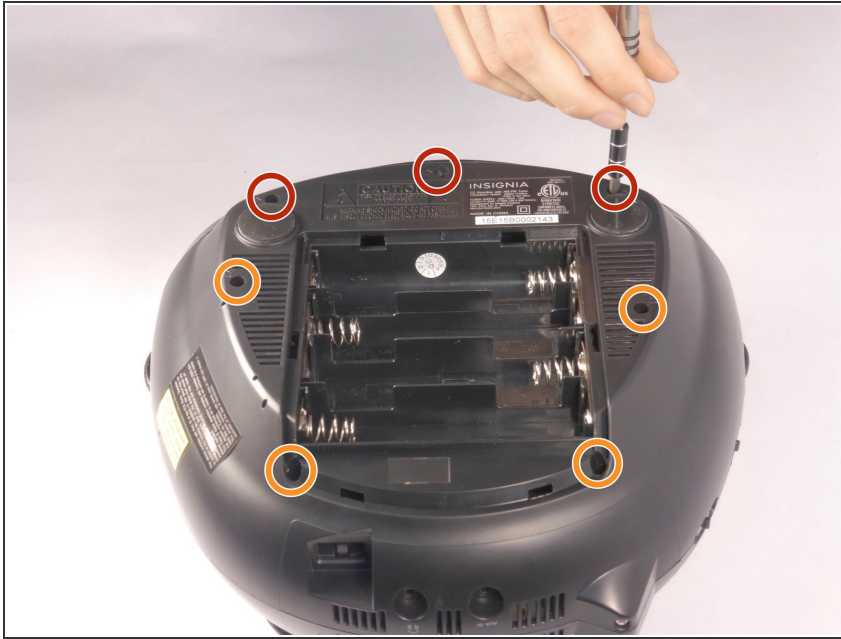
- Unplug and remove the power cord. Turn the boombox upside down.
- Grip the sides of the case and use your thumbs to pop open the battery cover.

Step 2



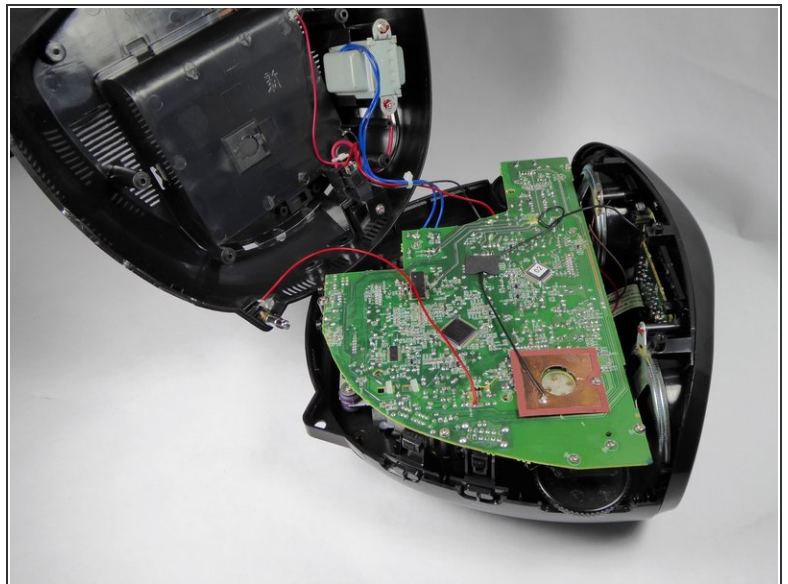
- Pry out the batteries with your fingers.

Step 3 — Casing



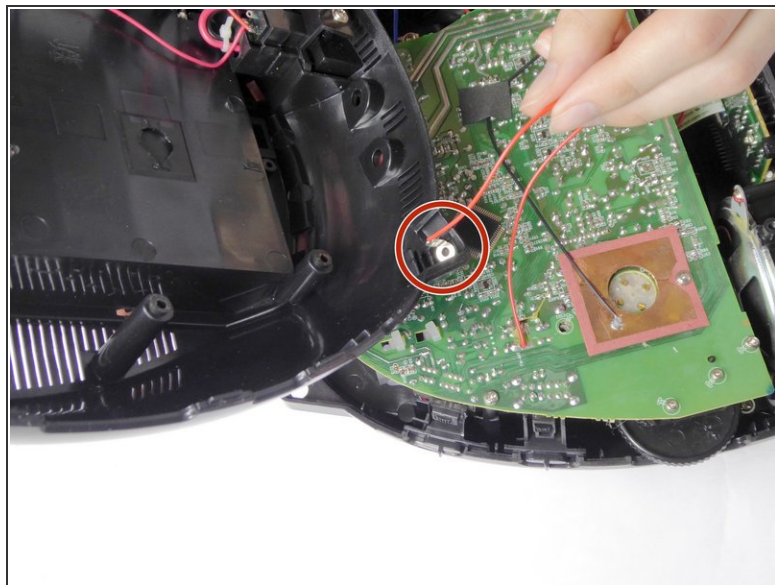
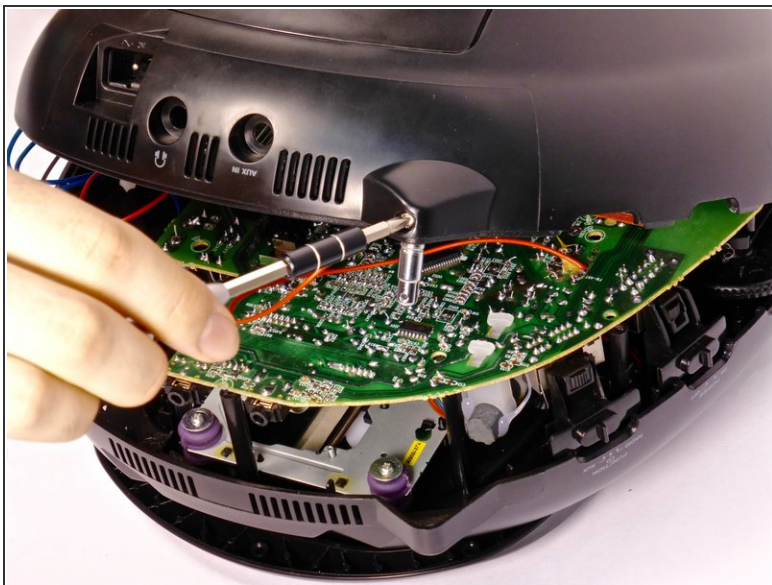
- Turn the boombox upside down again. With the Phillips PH1 or the Flathead #3 screwdriver, remove the three 14mm black screws.
- Remove the four 18mm chrome screws with the Phillips PH1 screwdriver.

Step 4



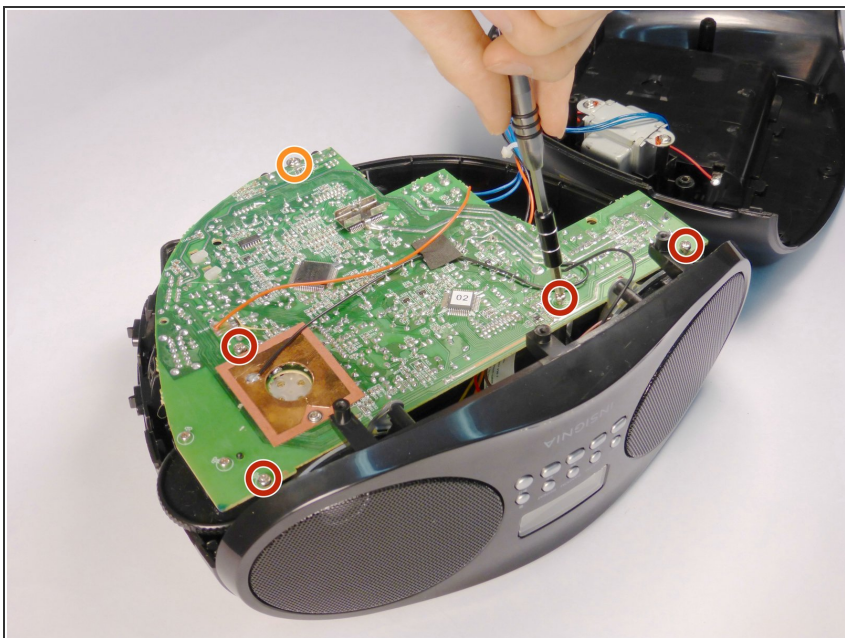
- Gently remove the bottom half of the casing from the top half of the casing.
- ⓘ The antenna base is connected to the motherboard by a red wire. This wire will prevent the two halves from separating completely.

Step 5 — Antenna Base



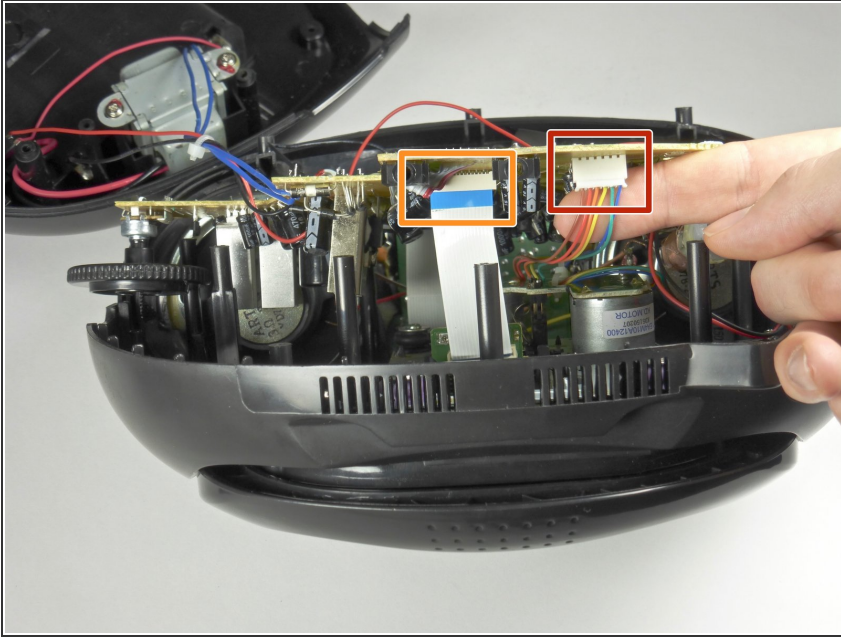
- Remove the 10mm chrome screw from the antenna base with the Phillips PH1 screwdriver. Remove the antenna base from the casing.
- This red wire will now be loose and you can move it out of the antenna base slot.

Step 6 — Motherboard



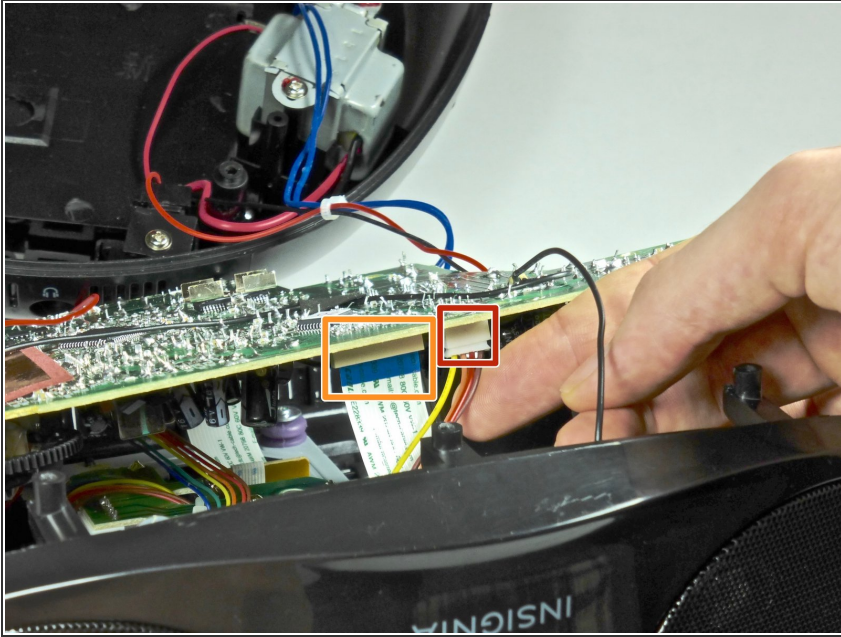
- Unscrew the four 12.5mm screws with the Phillips PH1 Screwdriver.
- Unscrew the one 10mm long screw with the Phillips PH1 Screwdriver.

Step 7



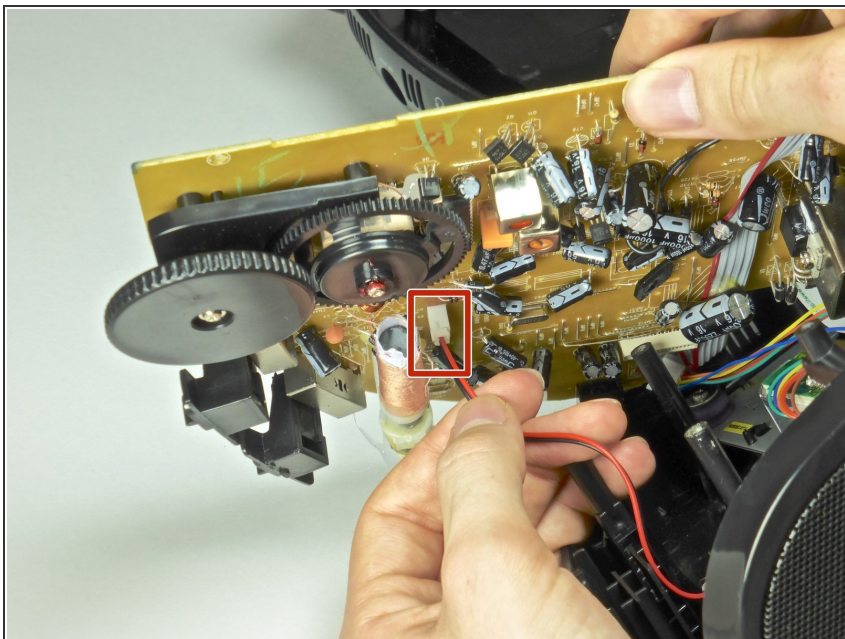
- Orient the device so that the back is facing you.
- Unplug the six pin male/female header from its socket on the motherboard. The wires on the header are these colors: burgundy, red, orange, yellow, green, and blue.
- ⓘ Use a tweezer if you find it hard to pull the header out with your fingers.
- Gently pull out the ribbon cable from its socket on the motherboard.
- ★ Pay attention to the orientation of the header and the ribbon cable. Replacing the wires the wrong way may short circuit the board.

Step 8



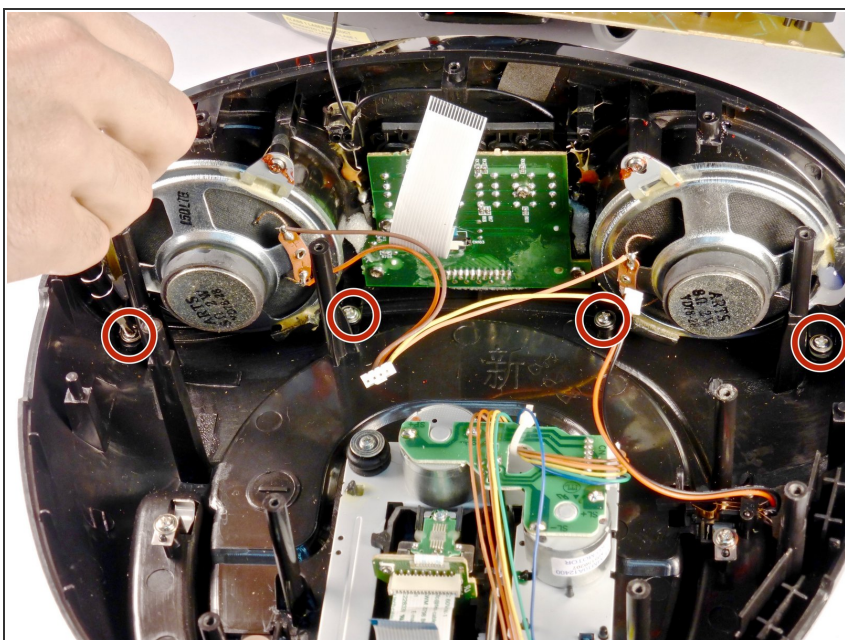
- Rotate the device so that the front is facing you.
- Unplug the four pin header from its socket on the motherboard. The wires on the header are these colors: brown, red, orange, and yellow.
- ⓘ Use a tweezer if you find it hard to pull this header out with your fingers.
- Gently pull out the ribbon cable from its socket.
- ★ Pay attention to the orientation of the header and the ribbon cable. Replacing the base the wrong way may short circuit the board.

Step 9



- Pull out the two pin header from its socket on the motherboard. The wires on this header are black and white.
- ⓘ Use a tweezer if you find it hard to pull this cable out with your fingers.

Step 10 — Front Panel



- Remove the four 8.5mm chrome screws from the front panel with the Phillips PH1 screwdriver.

Step 11



- Remove the front panel from the top casing.

Step 12 — Speaker



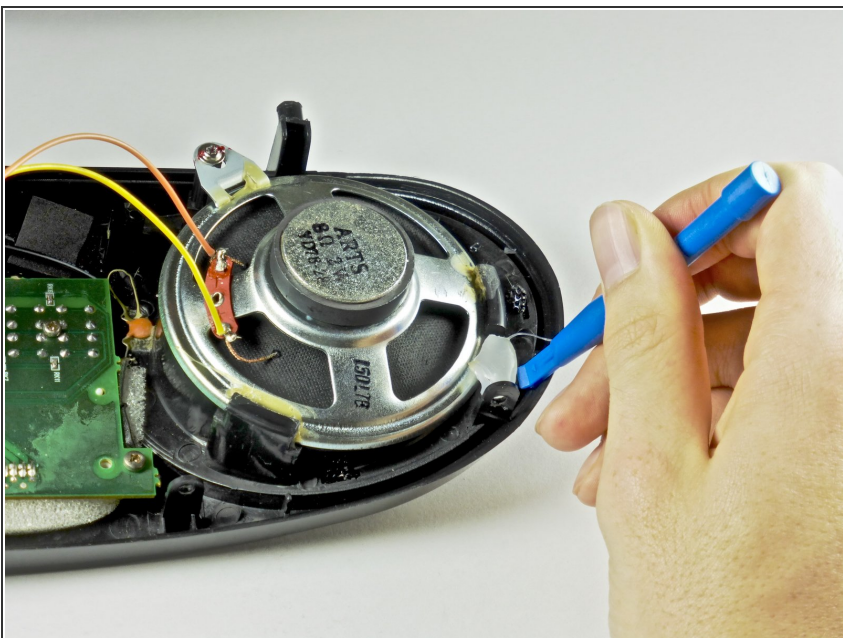
- ① The following instructions will show you how to replace the left speaker. Follow the same instructions to replace the right speaker.
- Use the blue opening tool to scrape the red adhesive off of the 12mm chrome screw.

Step 13



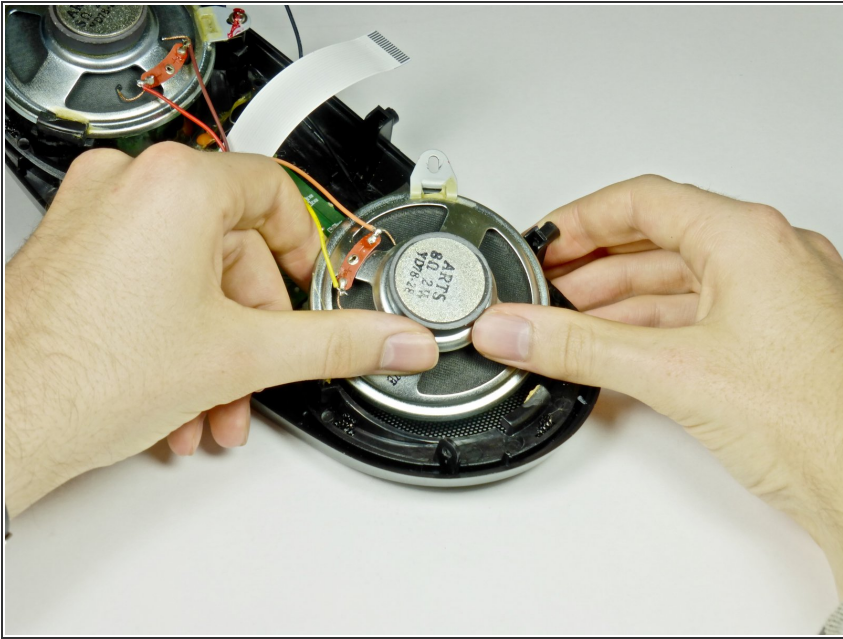
- Remove the 12mm chrome screw from the speaker with the Phillips PH1 screwdriver.

Step 14



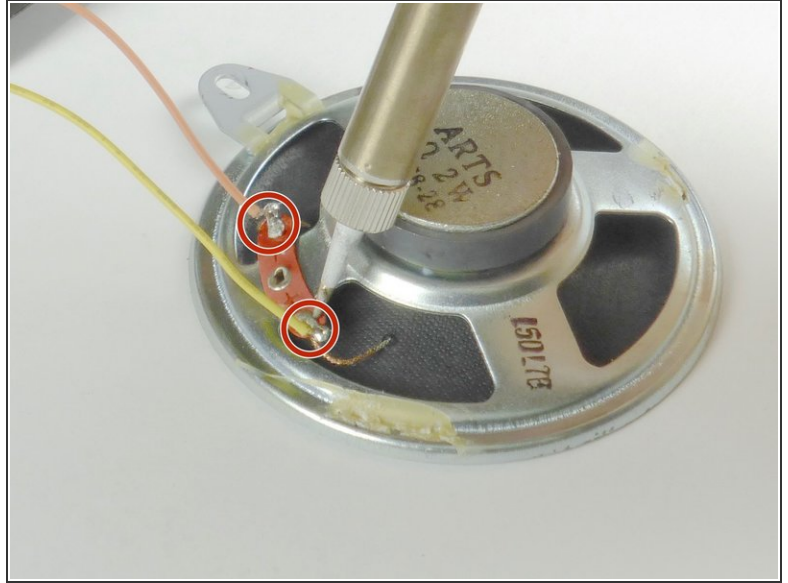
- Remove any glue on the edges of the speaker.

Step 15



- Pop out the speaker from the front panel.

Step 16



- Unsolder the two wires at the given points. If you need help soldering, see [this guide](#).
- ⓘ The speaker has two colored wires attached to the orange plate: one attached to the positive (+) end, and the other attached to the negative (-) end.
 - The *left* speaker (*shown*) has a *yellow* wire on the positive (+) end, and an *orange* wire on the negative (-) end.
 - The *right* speaker (*not shown*) has a *brown* wire on the positive (+) end, and a *red* wire on the negative (-) end.

To reassemble your device, follow these instructions in reverse order.