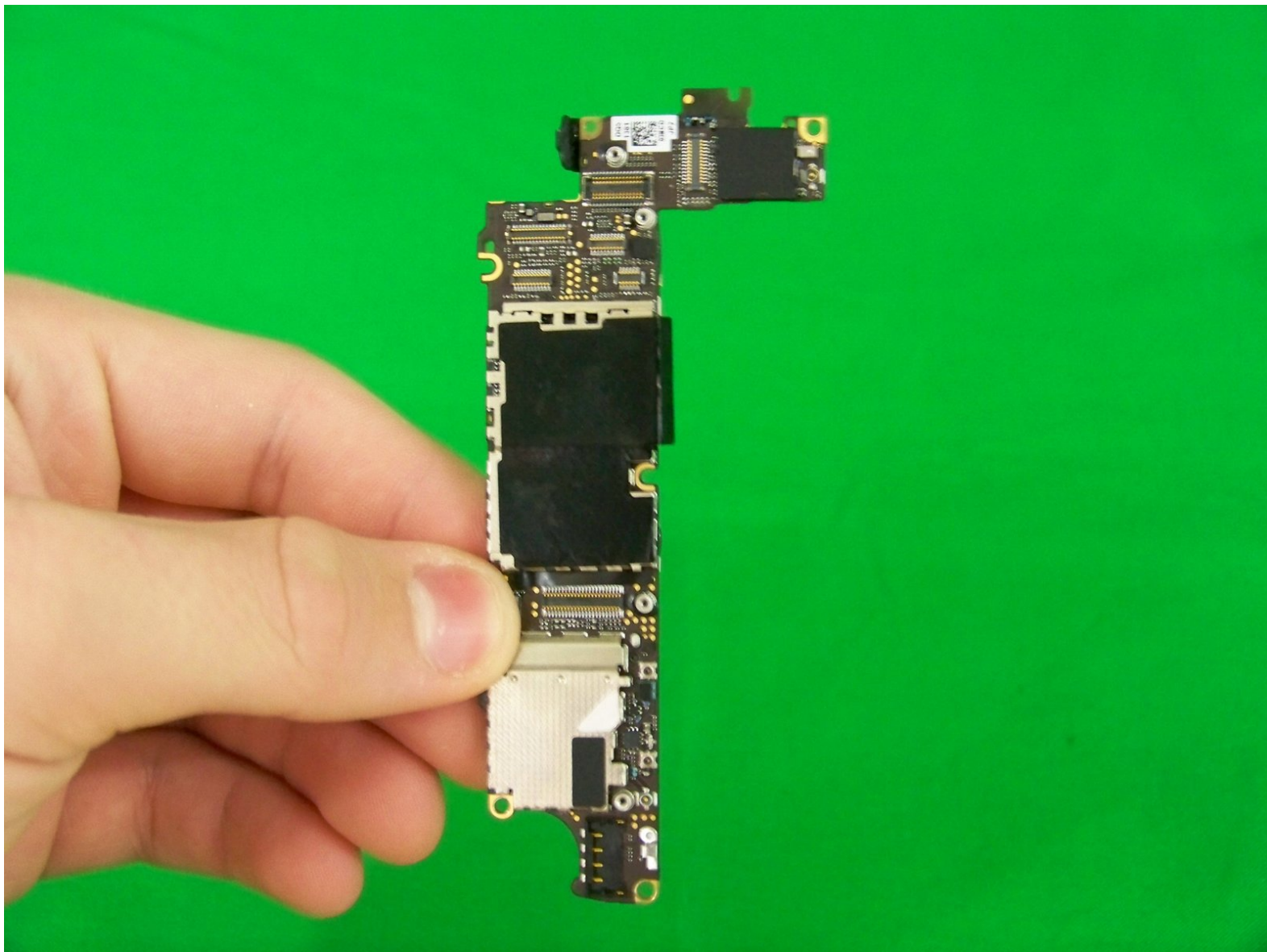




Disassembling iPhone 4S Logic Board

Written By: Chandler Skinner



INTRODUCTION

This guide has been updated by iFixit staff! Read the new, official guide [here](#).

TOOLS:

- [P2 Pentalobe Screwdriver iPhone](#) (1)
 - [Phillips #000 Screwdriver](#) (1)
 - [iFixit Opening Tools](#) (1)
 - [2.5 mm Flathead Screwdriver](#) (1)
-

Step 1 — Disassembling iPhone 4S Battery



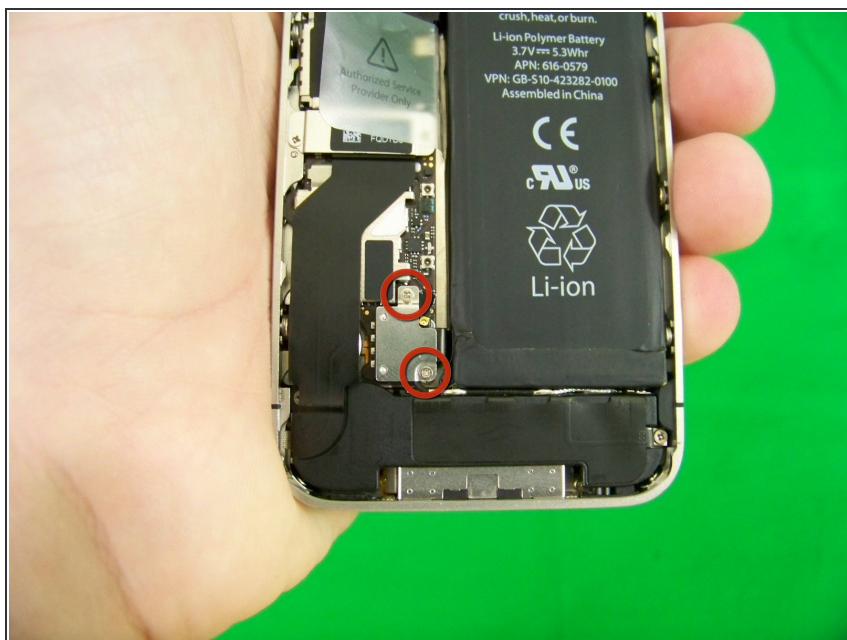
- Using a 5-point pentalobe screwdriver, unscrew the 2 pentalobe on the bottom of the phone near the dock connector.

Step 2



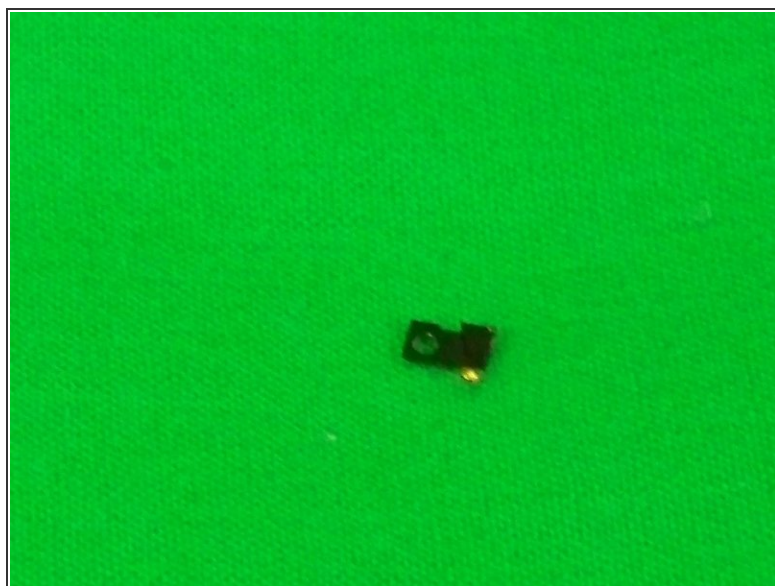
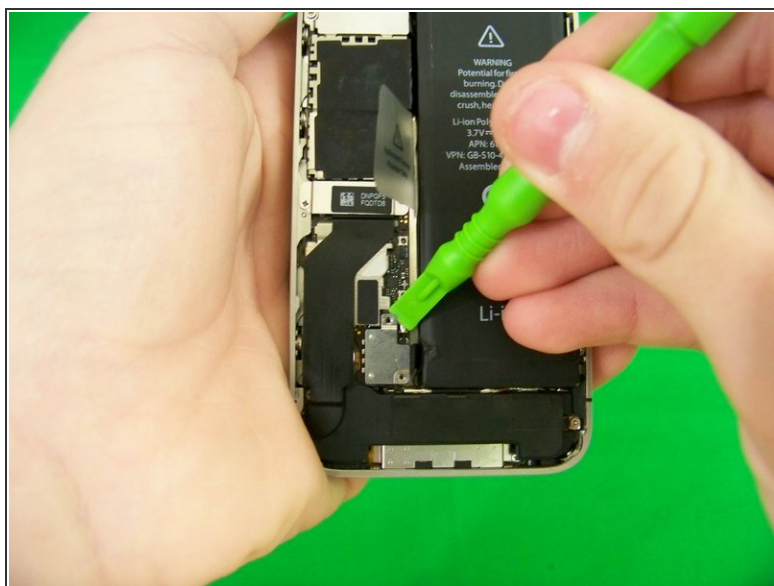
- Push the back glass towards the top of the phone.

Step 3



- Using a #000 Phillips screwdriver, unscrew the 2 very small Phillips screws.

Step 4



- Using a plastic opener tool, pry up the battery connector shield. Be careful not to lose the smaller antenna connector shield **under** the top connector shield.

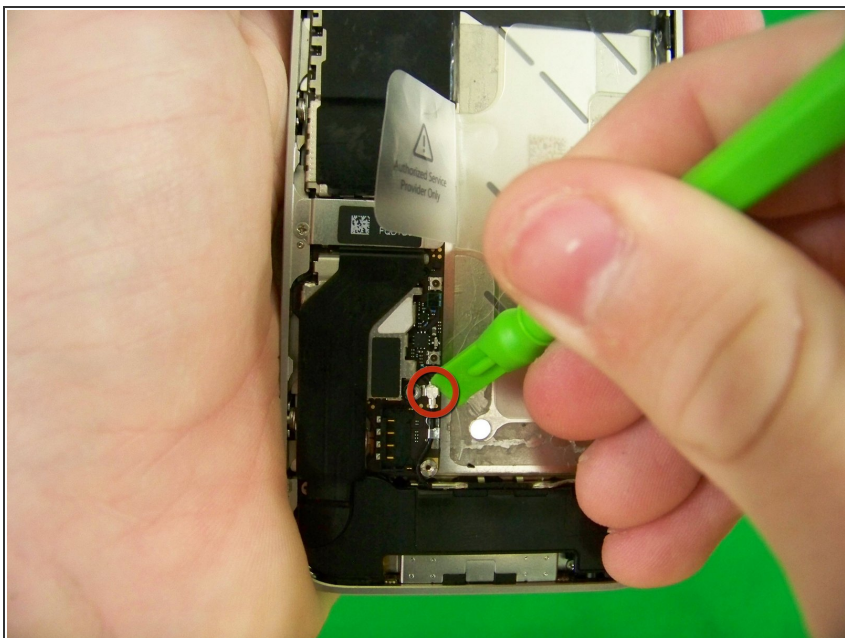
- ✎ Using a plastic opener tool, pry up the battery connector.

Step 5



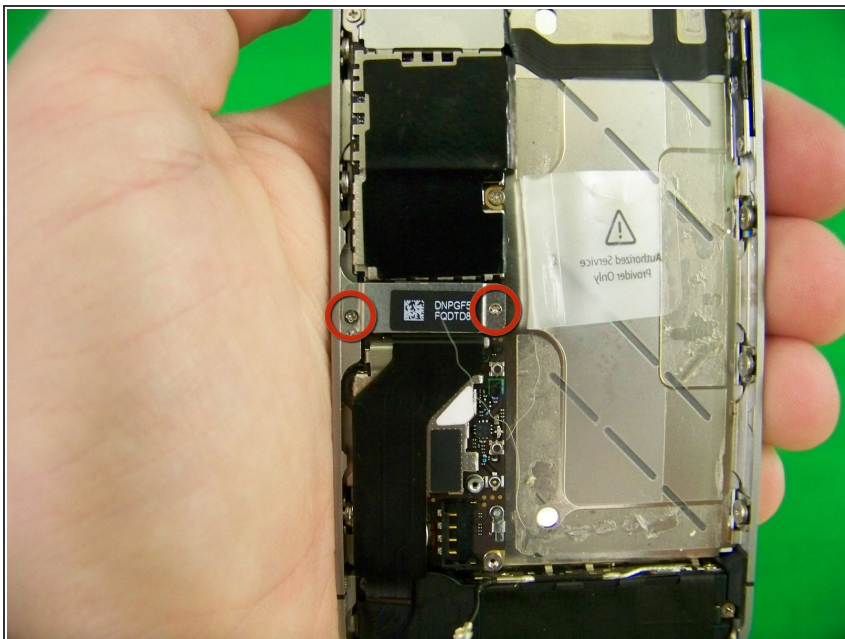
- Pull upwards on the plastic tab. If it's the first time, you may have to use the plastic pry tool on the outside (right) edge of the battery to loosen battery first.
- Then, out pops the battery.

Step 6 — Disassembling iPhone 4S Logic Board



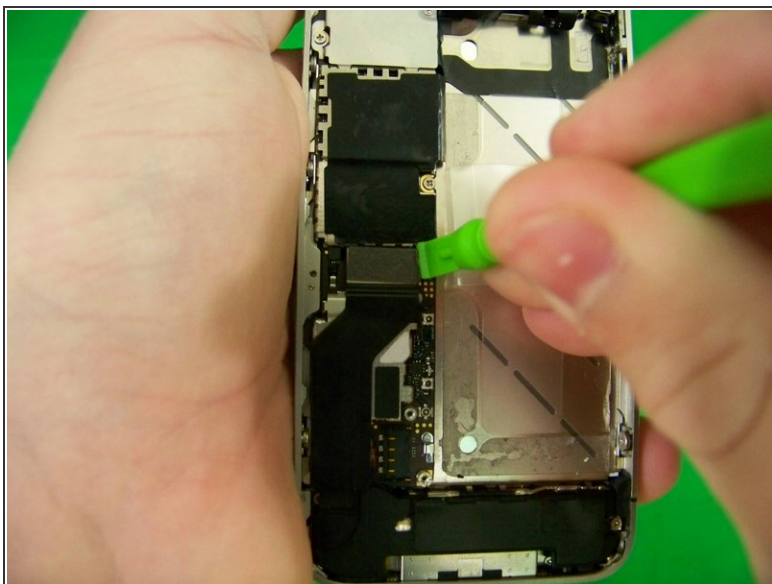
- Disconnect the antenna cable from the logic board.

Step 7



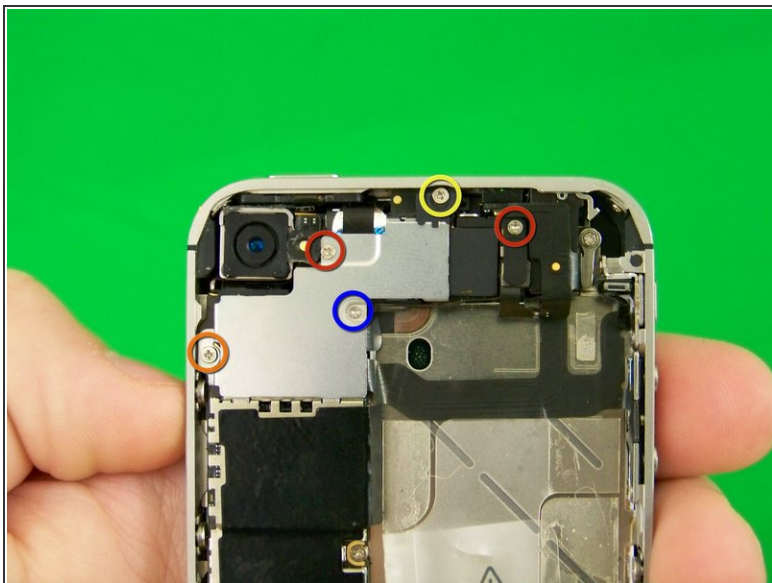
- Unscrew the 2 phillips screws holding the shield covering the dock connector ribbon.
- ☑ One of the screws is .2 millimeters longer than the other.

Step 8



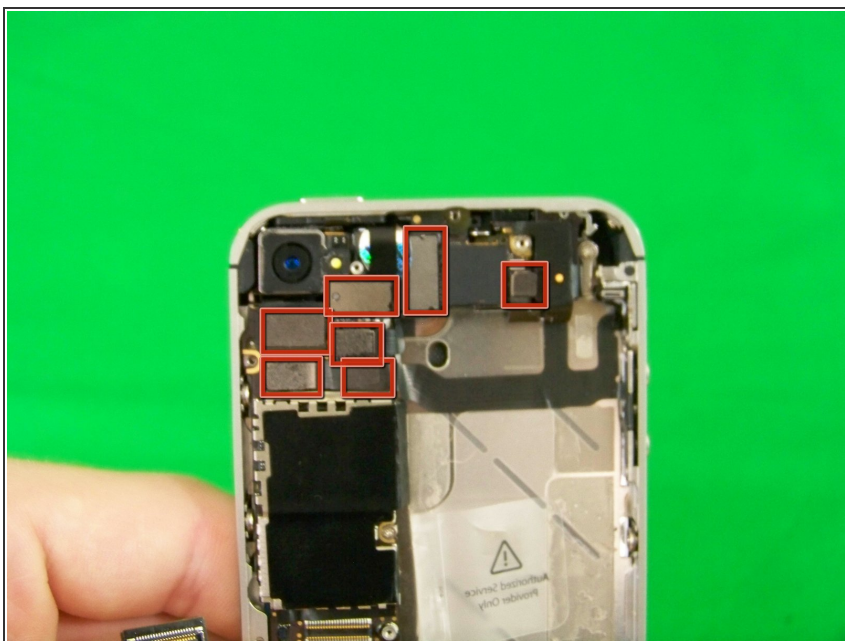
- Disconnect the dock connector ribbon from the logic board.
- Pull the cable up and flow it to the side.

Step 9



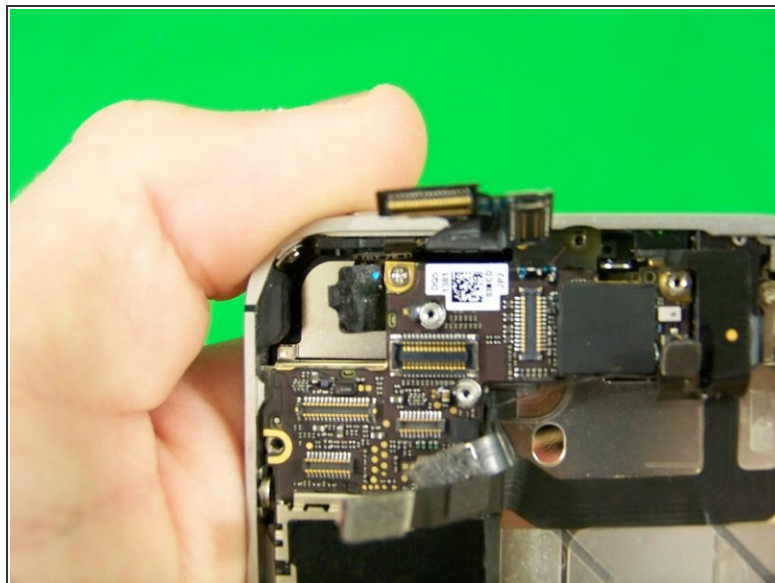
- Unscrew the 4 screws holding the large shield and the single screw holding the small shield.

Step 10



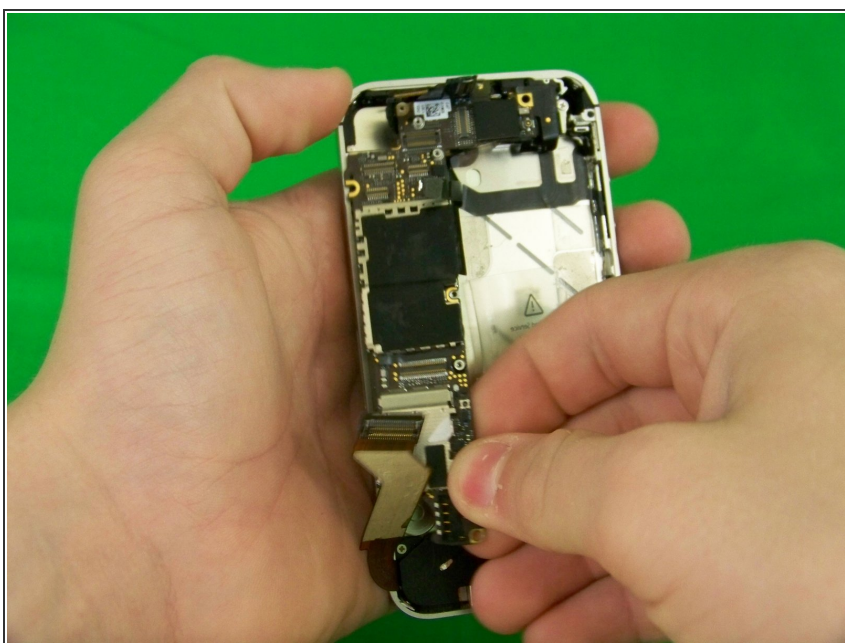
- Using the plastic opening tool, pry up the 7 connectors on the top of the logic board.
- ⓘ The back camera will come out, make sure you get the small piece of black plastic covering the back of the camera.

Step 11



- Unscrew the 2 flat head screws.
- Unscrew the 3 phillips head screws, the top one is covered by a small piece of black tape.

Step 12



- Using your fingers or a plastic opening tool carefully pull out the logic board.

To reassemble your device, follow these instructions in reverse order.