



# One Education Infinity:One Motherboard Replacement

This guide will demonstrate how to remove the motherboard in your One Education Infinity:One laptop.

Written By: Taylor Bratsch



This document was generated on 2020-11-17 05:03:25 AM (MST).

---

# INTRODUCTION

This guide will demonstrate how to replace the motherboard in your One Education Infinity:One laptop.

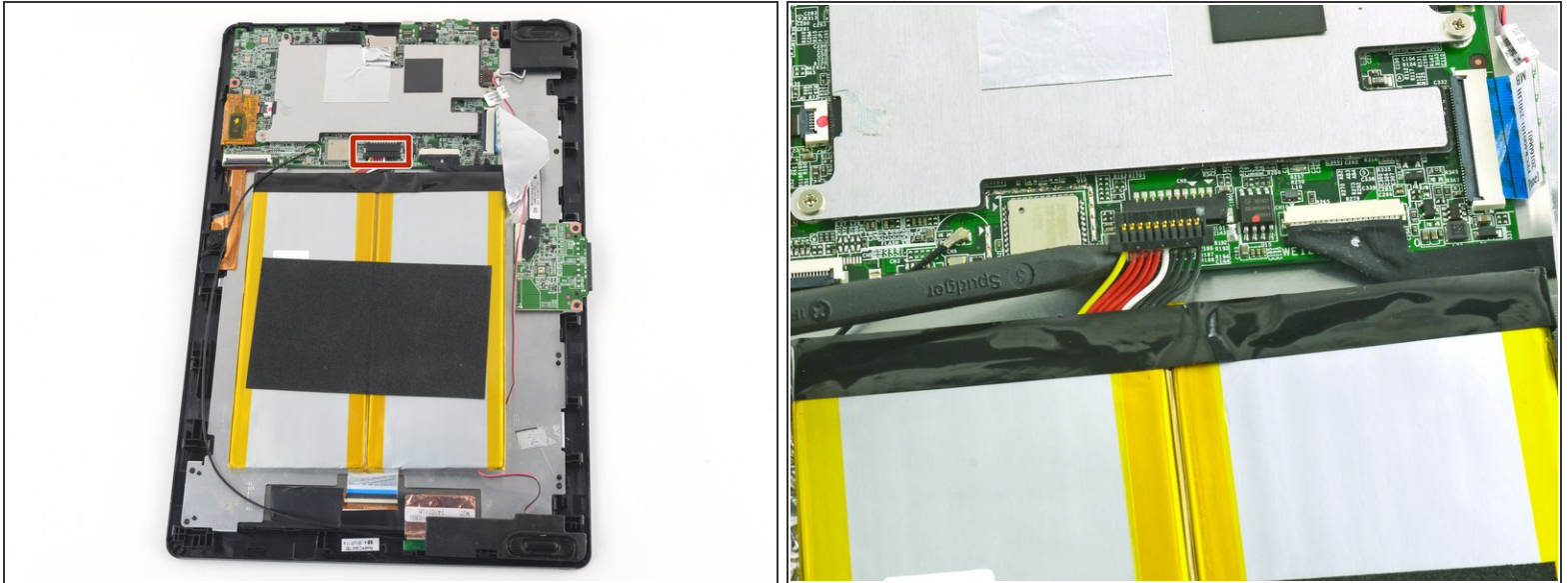
---



## TOOLS:

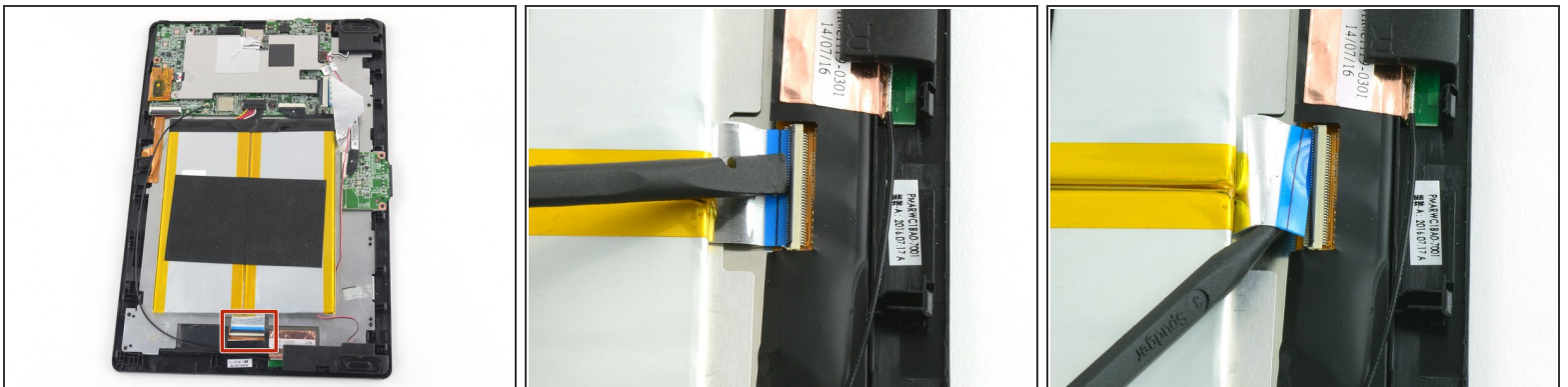
- [Jimmy](#) (1)
  - [Heavy-Duty Spudger](#) (1)
  - [Tweezers](#) (1)
  - [Phillips #00 Screwdriver](#) (1)
  - [Phillips #000 Screwdriver](#) (1)
-

## Step 1 — Battery



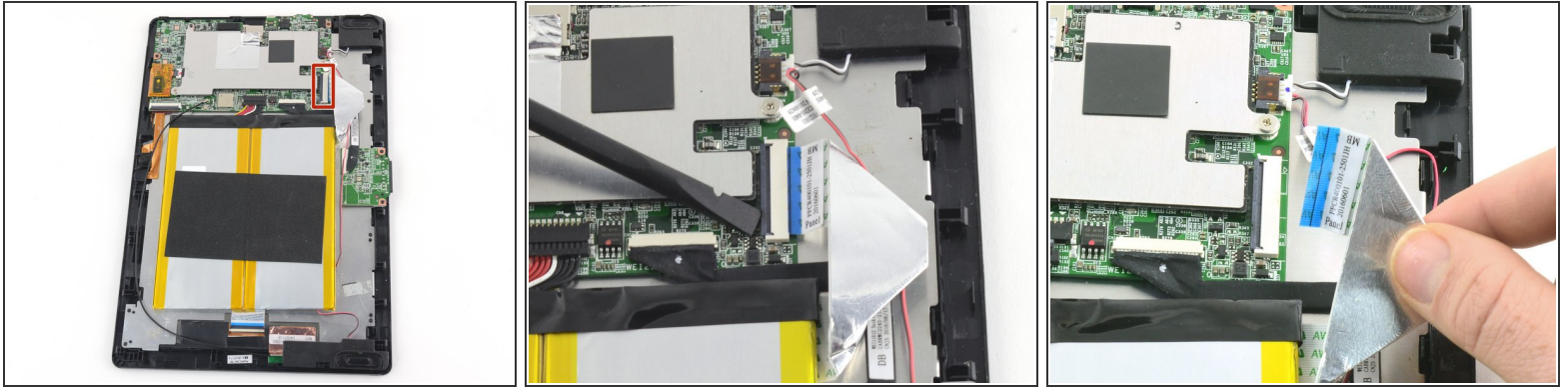
- Use a spudger to disconnect the black bundled cable connector from the motherboard.

## Step 2



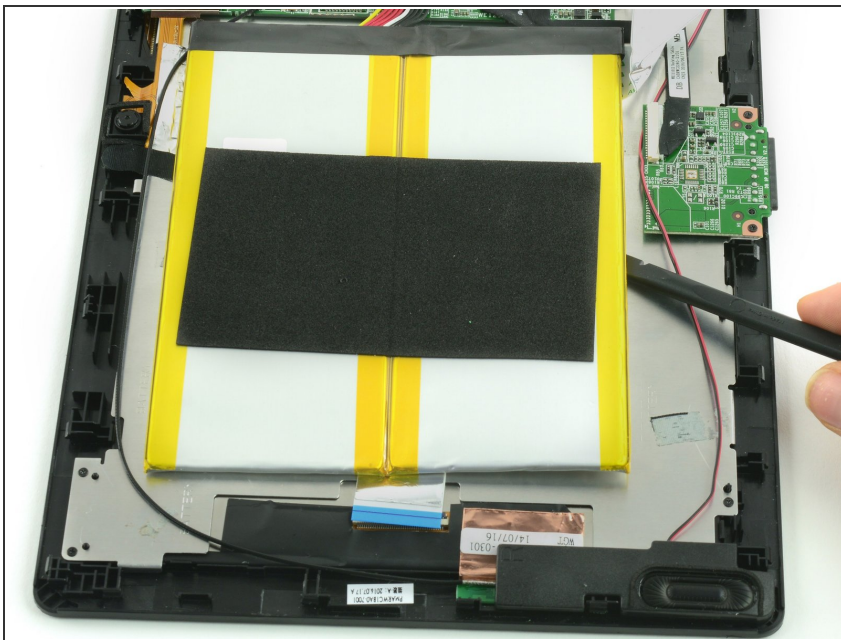
- Use a spudger to lift the black tab on top of the ZIF connector.
- Slide the ribbon cable out of the connector.

## Step 3



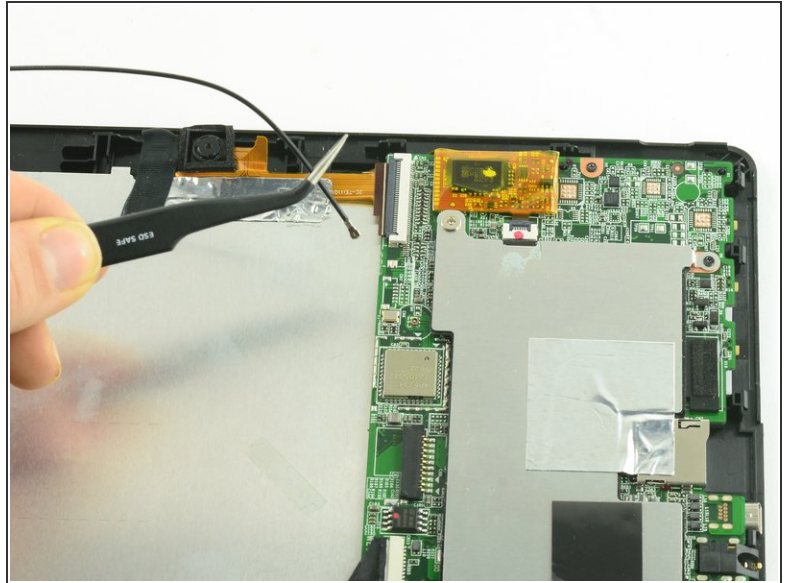
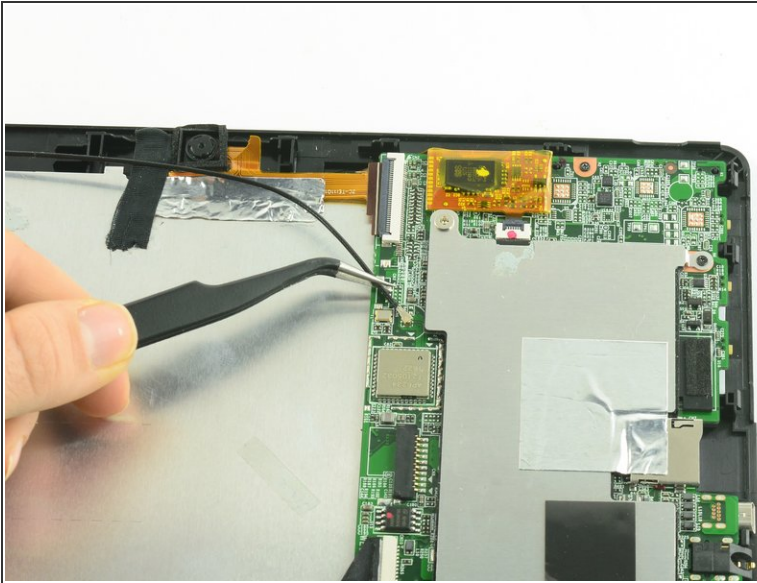
- Use a spudger to flip up the black retaining flap on the ZIF connector.
- Pull the folded ribbon cable straight out of the connector.
- ⓘ This ribbon cable must be disconnected before removing the battery because it is attached to the battery with adhesive.

## Step 4



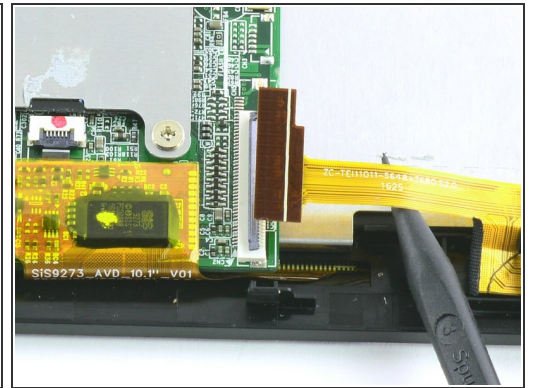
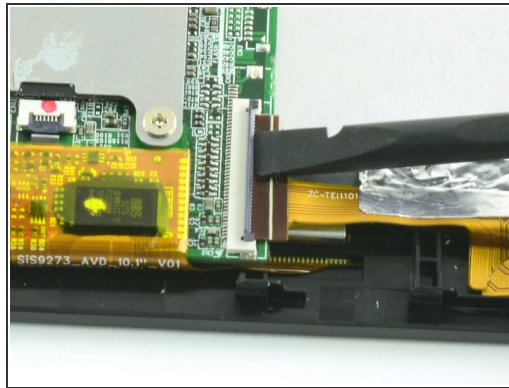
- Use a spudger to pry the battery away from the device.
- ⚠ Always use ESD safe tools when working with delicate electrical components.

## Step 5 — Antenna



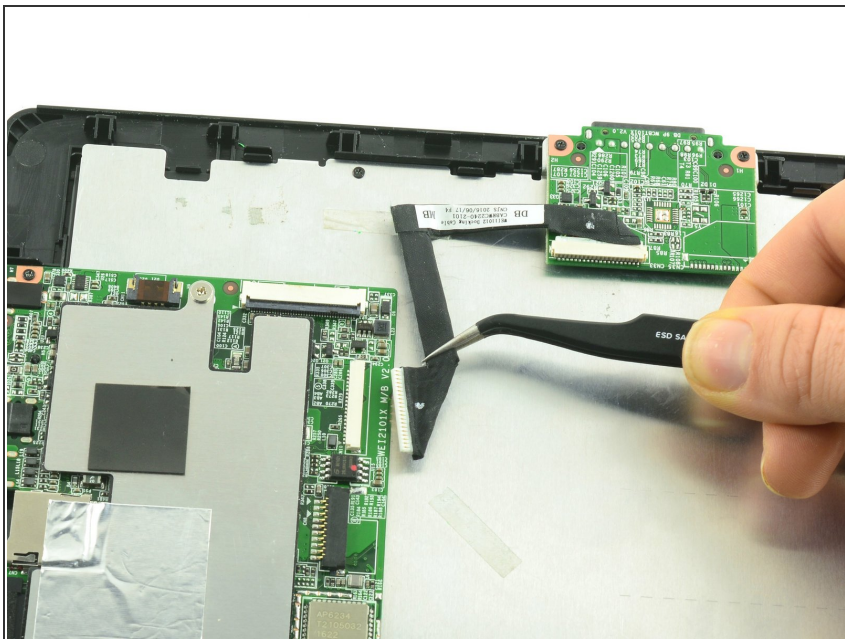
- Use ESD safe tweezers to disconnect the antenna from the motherboard.

## Step 6 — Motherboard



- Use a spudger to flip up the black flap on the camera's ZIF connector.
- Pull the ribbon cable straight out of the connector.

## Step 7



- Use tweezers to pull the dock connection cable away from the motherboard.

## Step 8



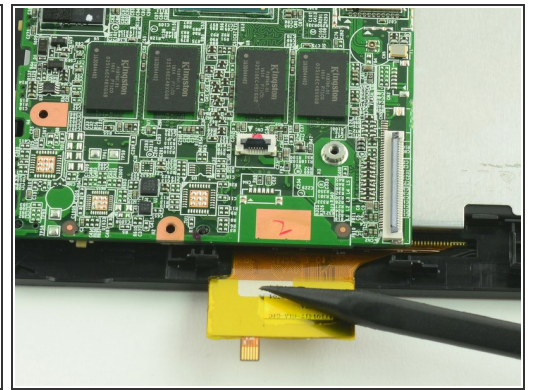
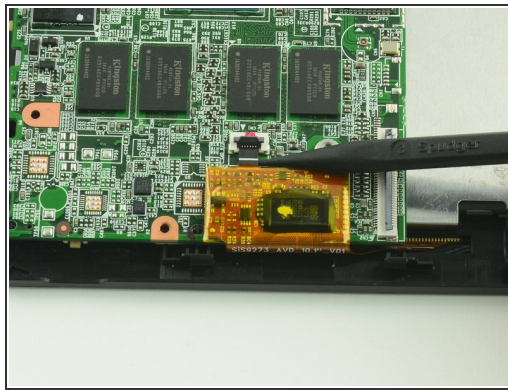
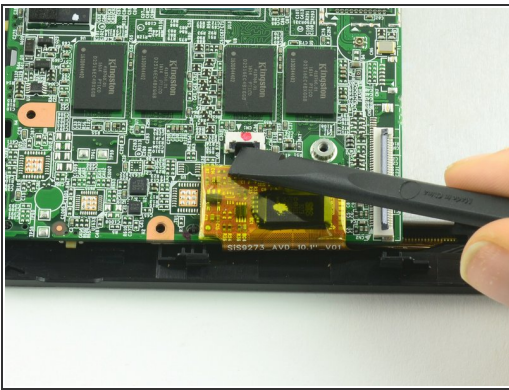
- Use a Phillips #00 screwdriver to unscrew the two 3.4 mm screws.
- Use a Phillips #000 screwdriver to unscrew the one 4.2mm screw.

## Step 9



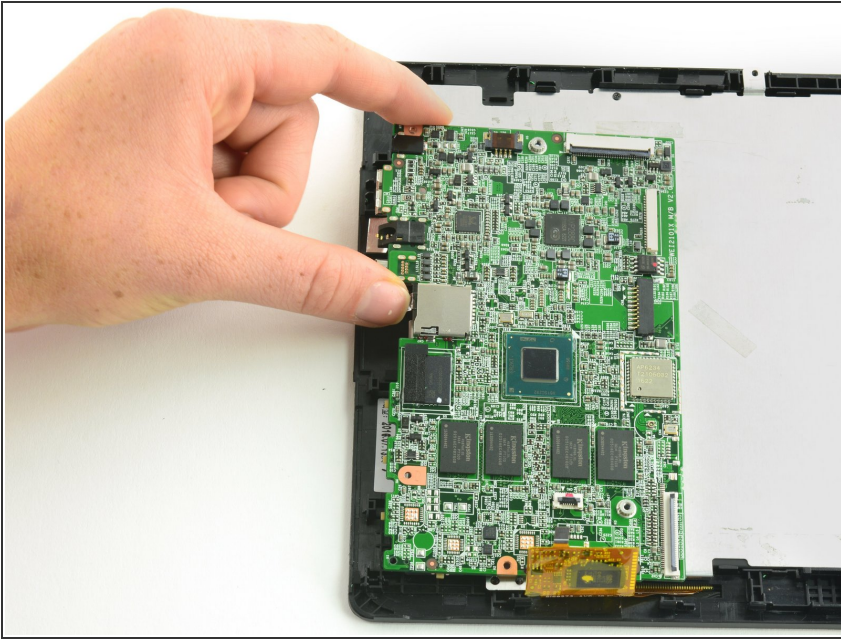
- Lift the protective shield away from the motherboard.

## Step 10



- With the flat end of a spudger, flip up the black flap on the display's ZIF connector.
  - Insert the pointed end of the spudger between the cable and the motherboard and gently pull the cable straight out of the connector.
- ✦ During reassembly, be sure to insert the cable into the connector up to the white line on the cable and then close the retaining flap.

## Step 11



- Gently lift the motherboard away from the display assembly.

To reassemble your device, follow these instructions in reverse order.