



Lenovo Vibe Z2 Pro Motherboard Replacement

This guide will demonstrate how to replace the motherboard of your device.

Written By: Mitchell Beall



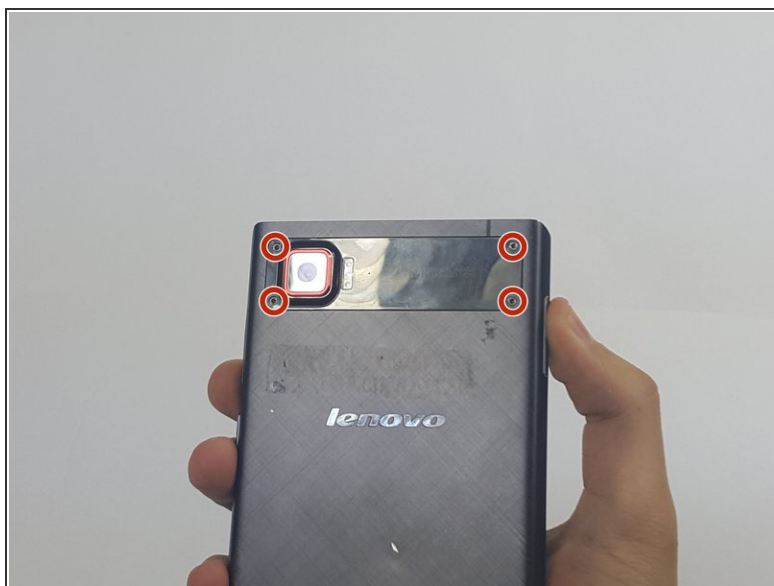
INTRODUCTION

If your phone no longer powers on after replacing the battery, your motherboard might be defective. Learn how to replace it in this guide.

TOOLS:

- [Spudger](#) (1)
 - [Metal Spudger](#) (1)
 - [T4 Torx Screwdriver](#) (1)
 - [Phillips #000 Screwdriver](#) (1)
 - [Tweezers](#) (1)
-

Step 1 — Lenovo Vibe Z2 Pro Backplate Disassembly



- Remove the 4.9 mm torx head screws located on the camera plate on the back of the phone

Step 2



- Remove the 3.65 mm Torx head screws at the bottom of the phone.

Step 3



- Remove the SIM card tray by pushing a pin into the hole on the side of the phone.

Step 4



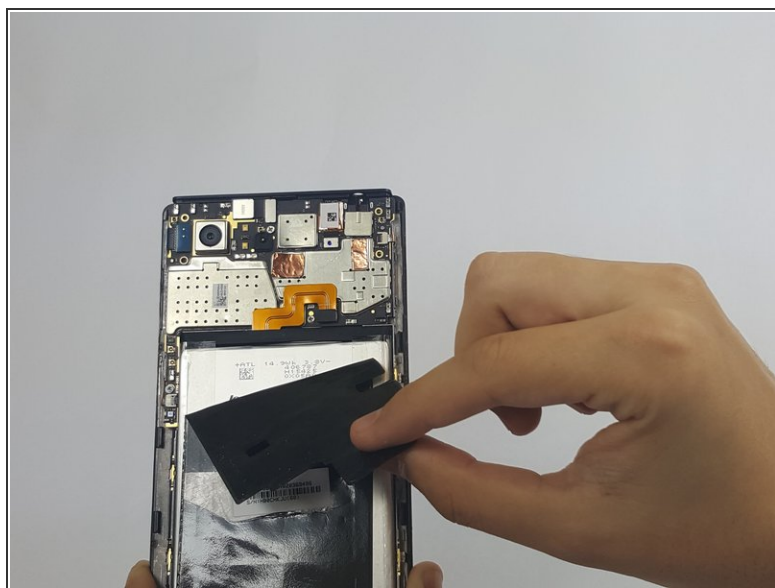
- Push the Spudger along the gap between the phone and the backplate to separate them.

Step 5



- Carefully pull the backplate away from the phone.

Step 6 — Battery



- Peel away protective the film using your hands.

Step 7



- Remove any adhesive strips holding the battery in place gently using a fingernail or spudger.

⚠ The regular black nylon spudger should be used whenever possible, especially around batteries.

Step 8



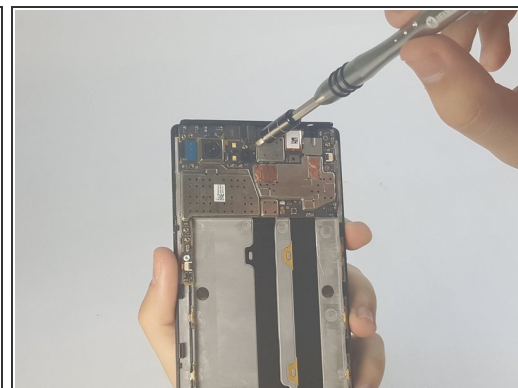
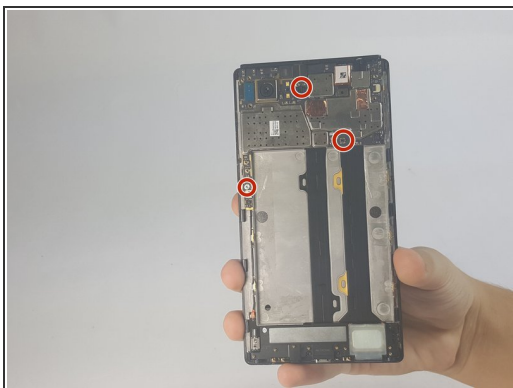
- Disconnect the orange battery ribbon cable by gently lifting with a spudger.

Step 9



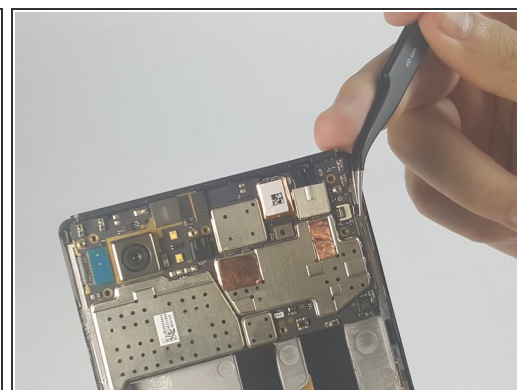
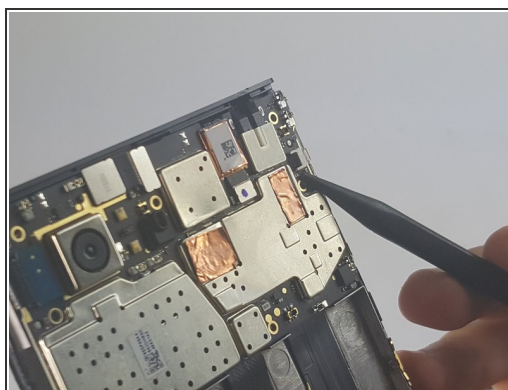
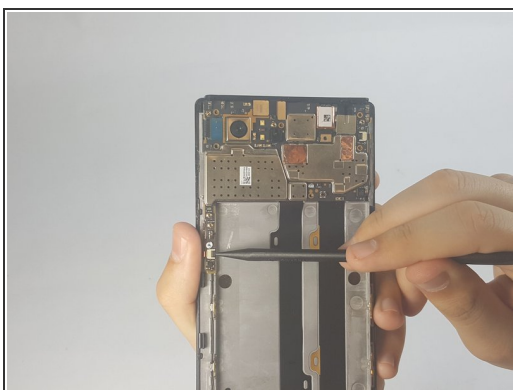
- Insert a fingernail or spudger into either side of the battery and lift upward.
- Remove the battery from phone.

Step 10 — Motherboard



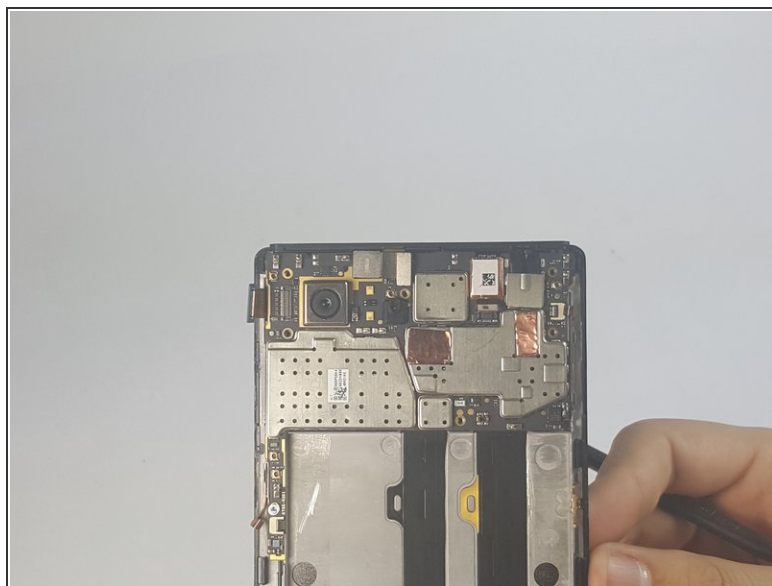
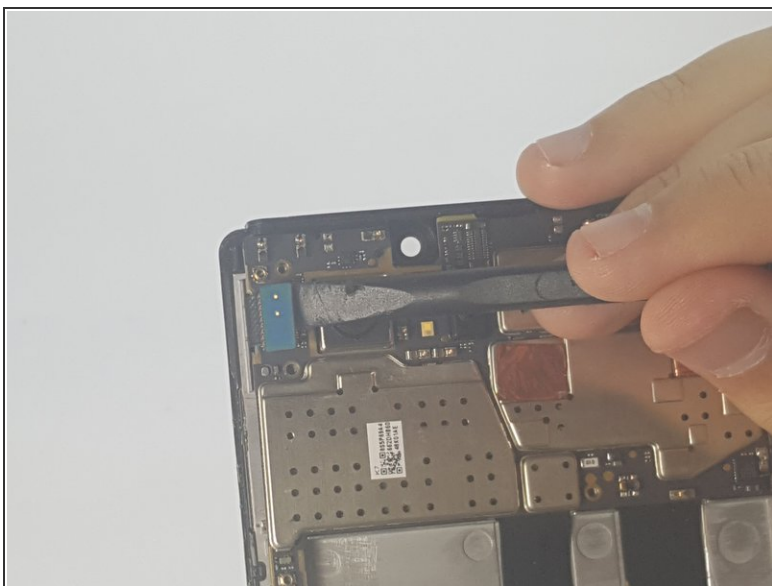
- Remove the 3.15mm Phillips Head #000 screws from motherboard.

Step 11



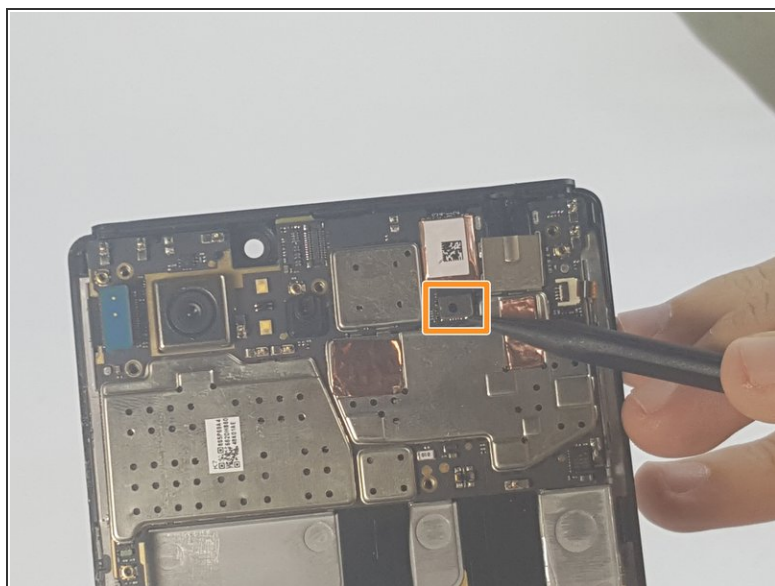
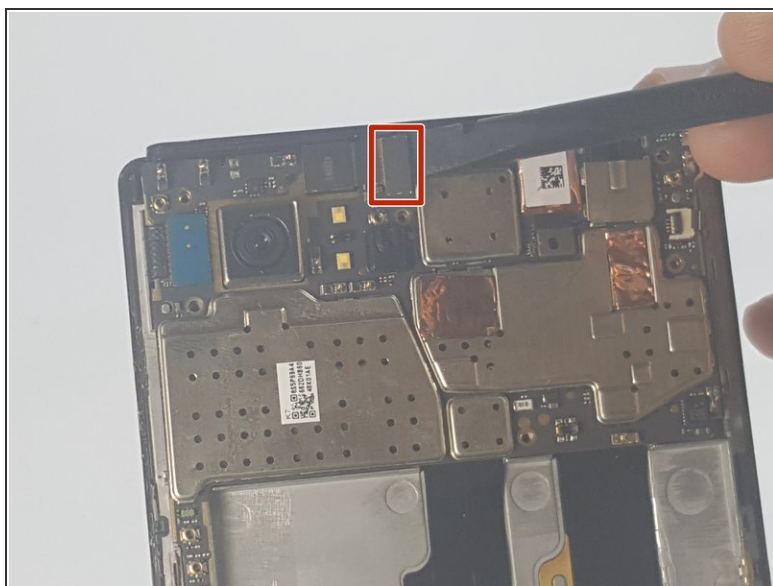
- Disconnect the two ribbon cables by gently lifting on the black hinges and pulling away with tweezers

Step 12



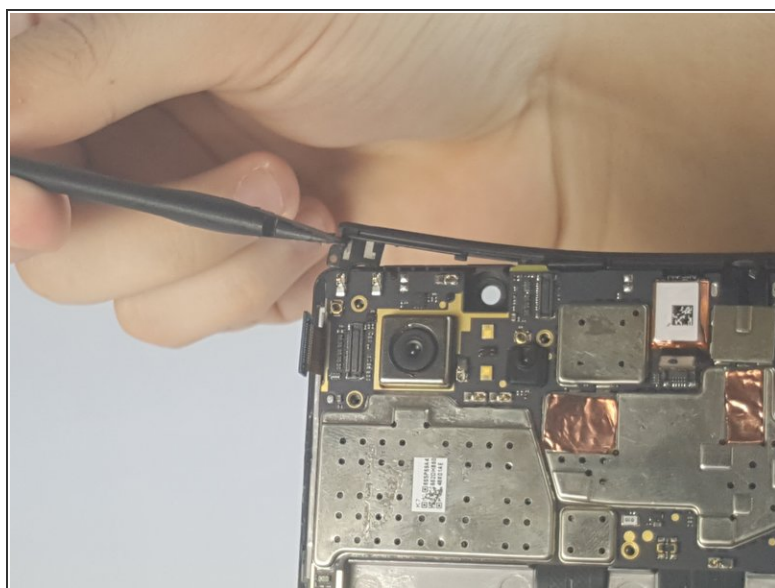
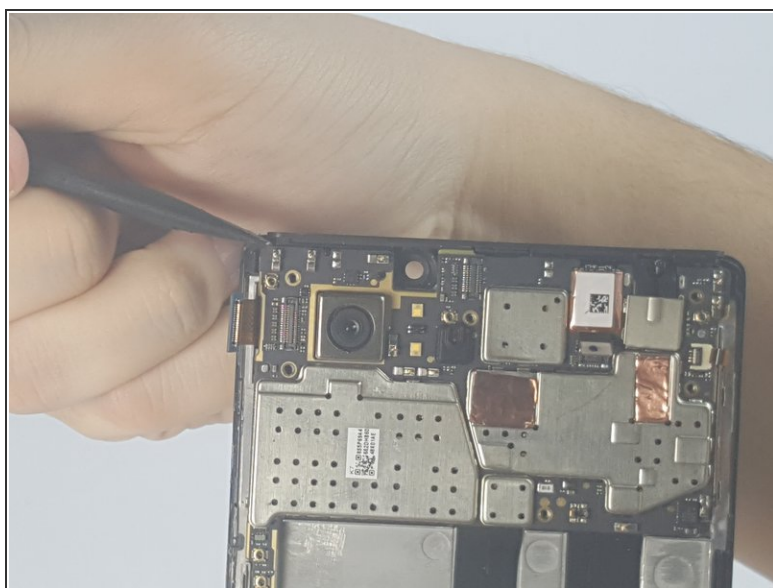
- Gently disconnect the rear-camera connector

Step 13



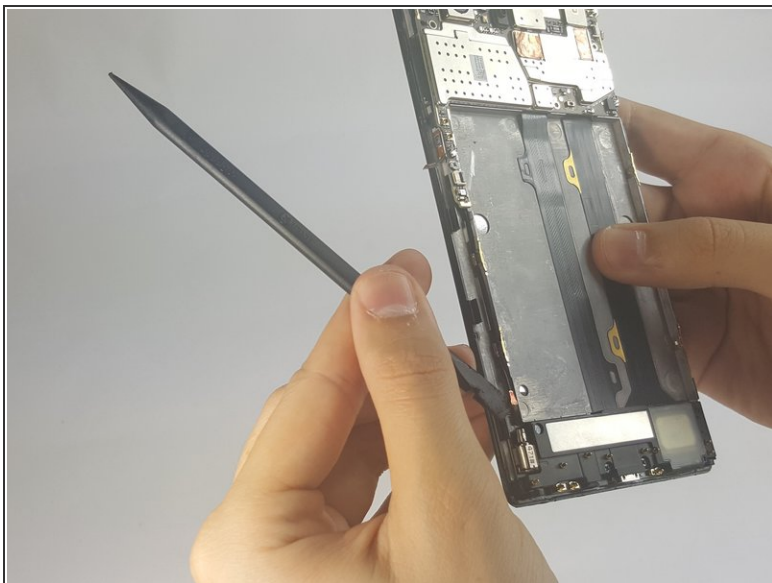
- Gently remove the front-facing camera by gently lifting on the connector tab.
- Remove the other connector by gently lifting with a spudger.

Step 14



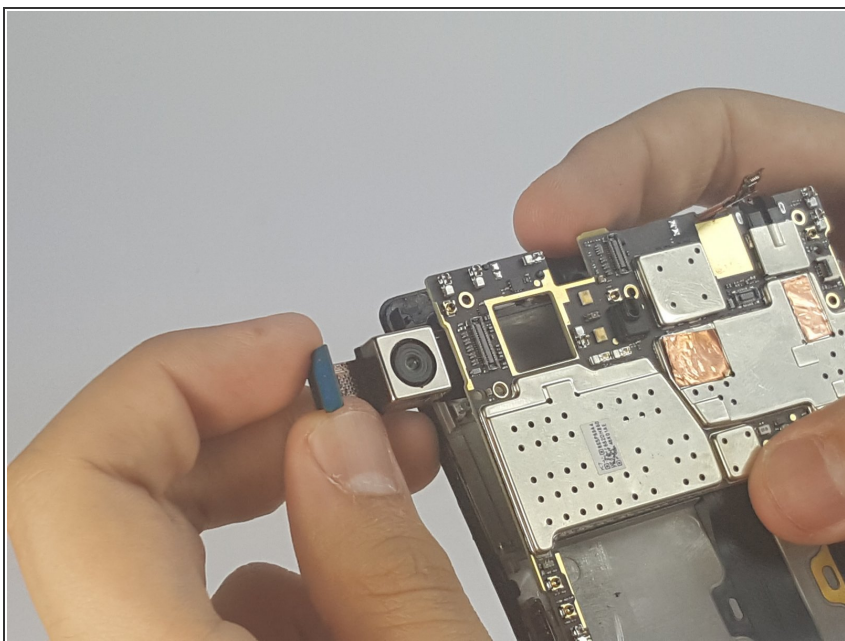
- Pry off the plastic brace along the top edge of the phone

Step 15



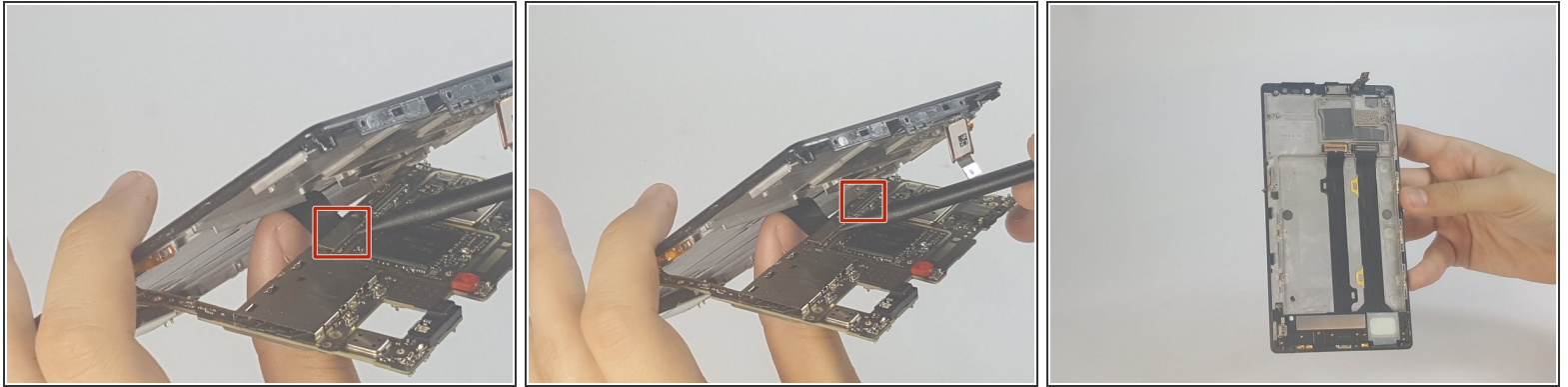
- Remove the antenna connected to the bottom piece of the screen plate

Step 16



- Gently lift the motherboard off the frame
- Pull the camera out from behind the motherboard

Step 17



- Using a spudger, disconnect the charging port assembly cable and the screen connection cable.
- Remove the motherboard completely.

To reassemble your device, follow these instructions in reverse order.