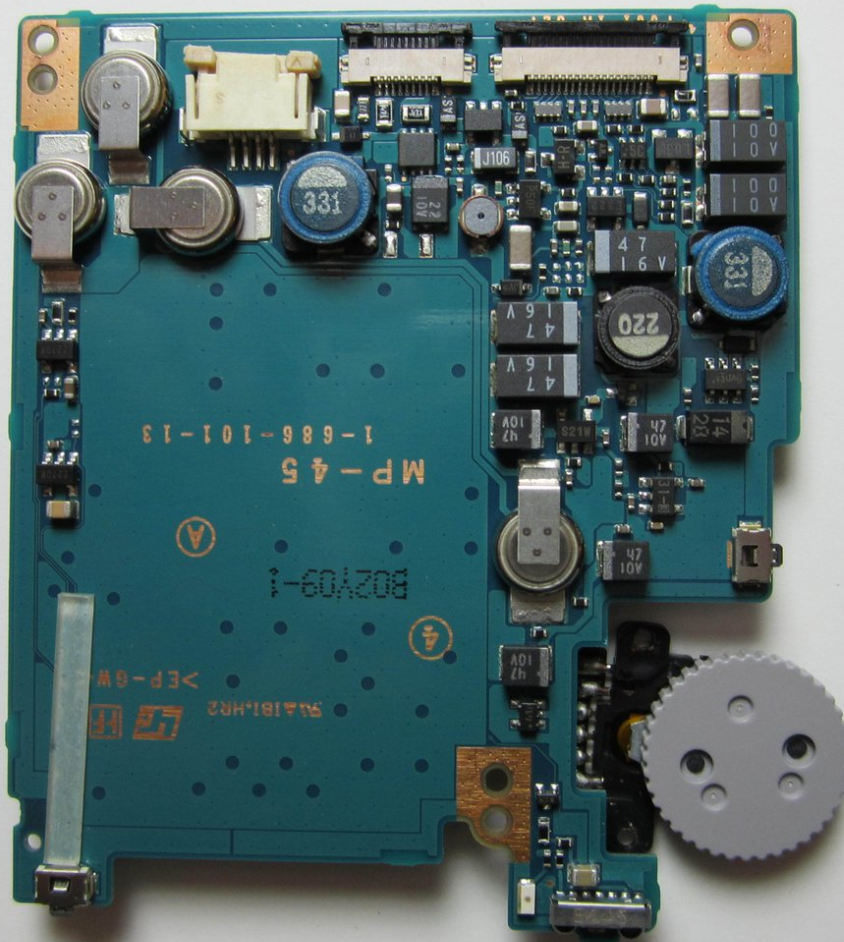




Sony Clie PEG-SL10 Motherboard Replacement

Written By: Emily





TOOLS:

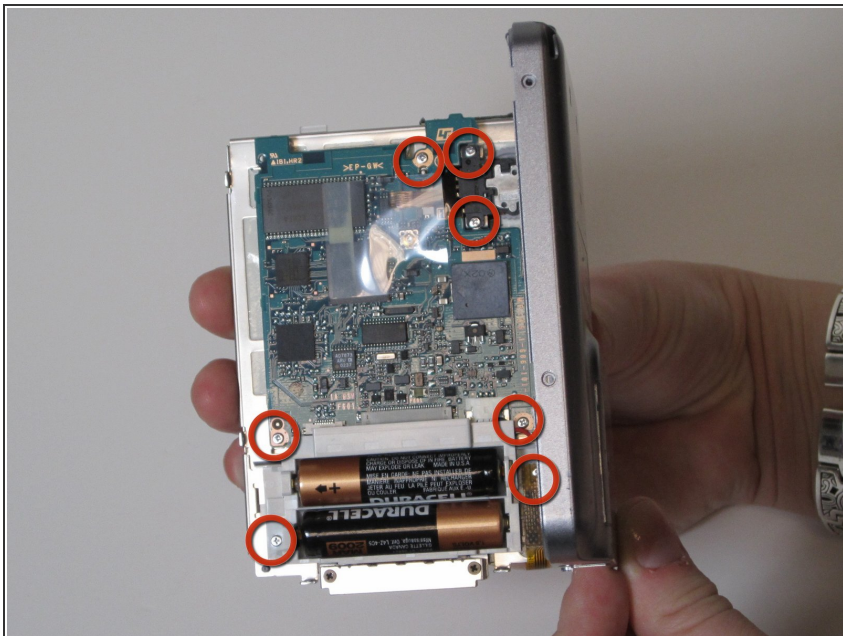
- [Phillips #0 Screwdriver](#) (1)
-

Step 1 — Motherboard



- Remove the six screws holding the case together.

Step 2



- Remove the seven screws holding the motherboard to the device.

Step 3



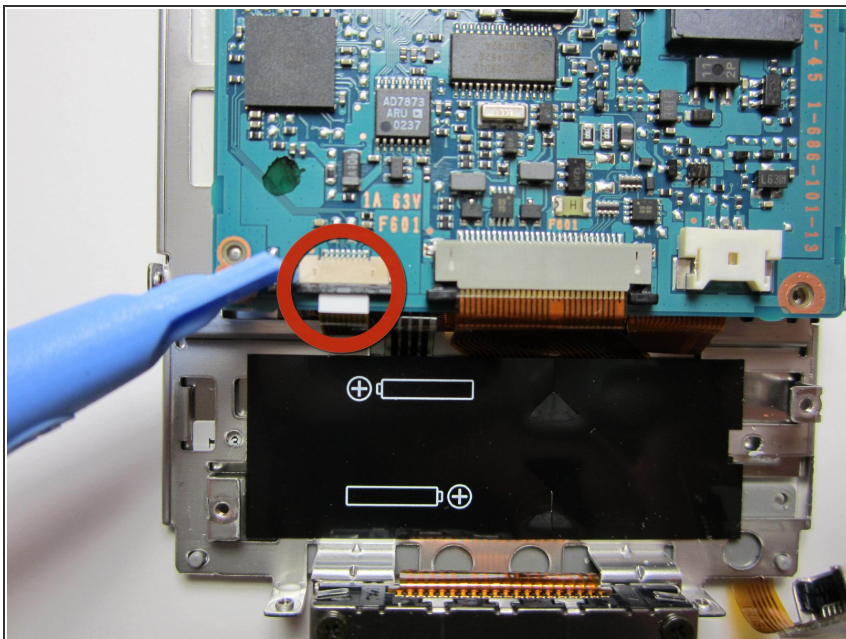
- Unclip the battery harness power cable from the motherboard.

Step 4



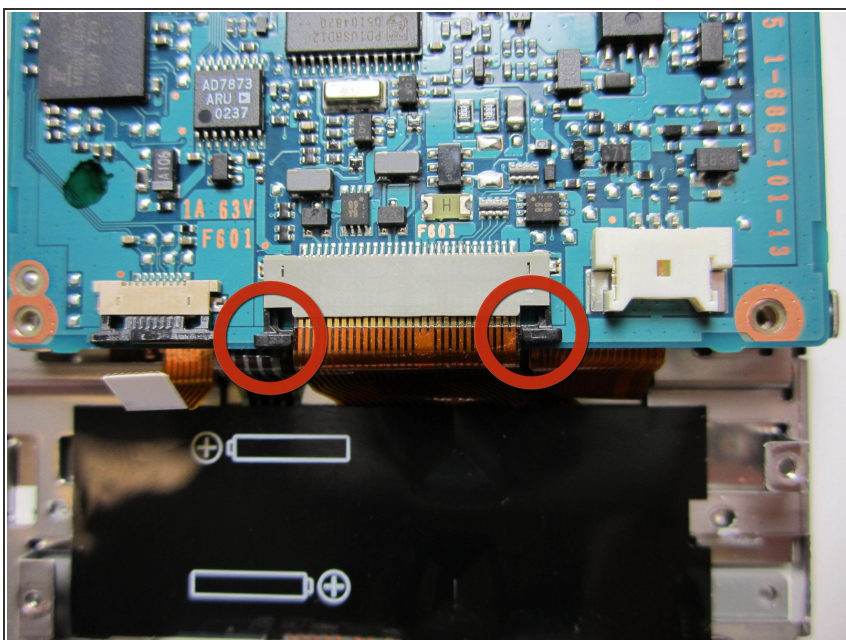
- Unclip the scroll wheel power cable from the motherboard.

Step 5



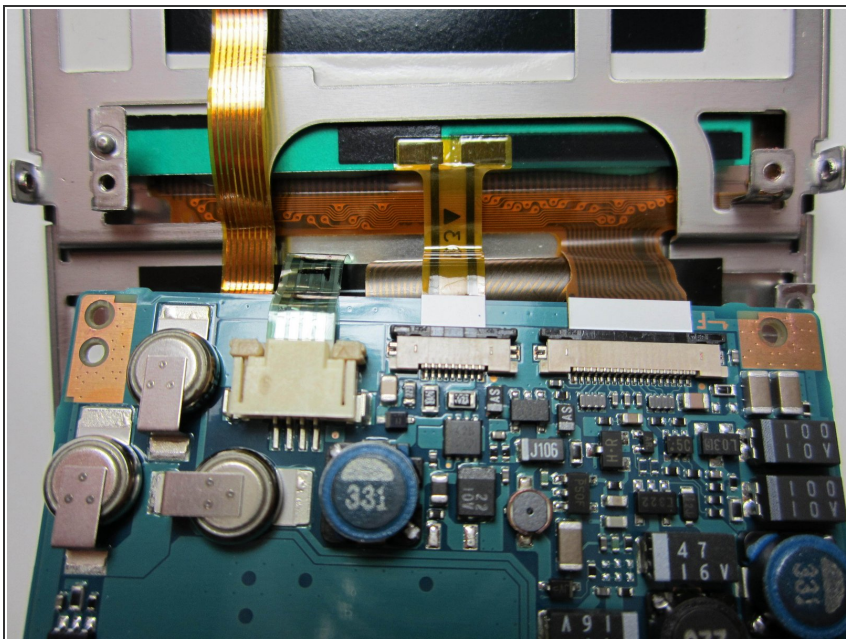
- Pull the left clip to remove the cable.

Step 6



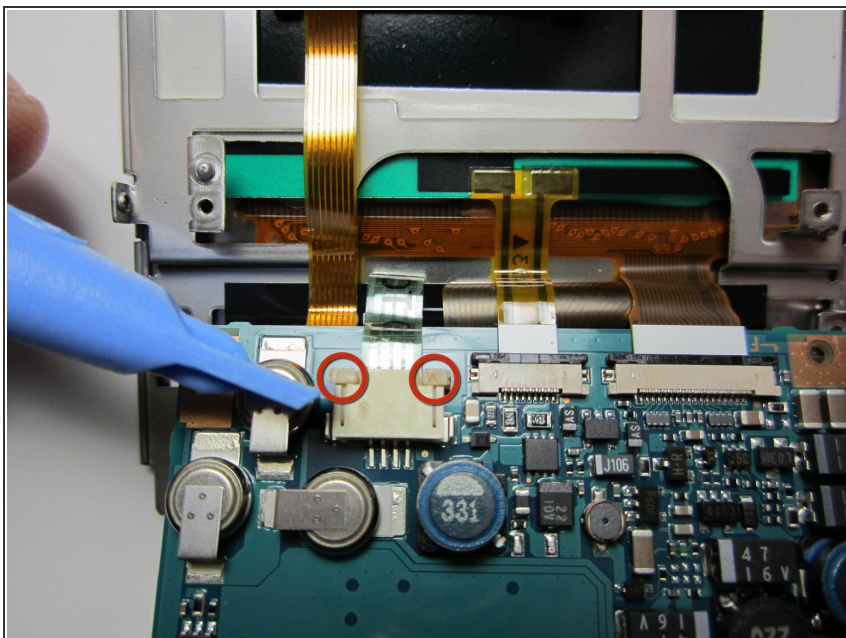
- Pull out the two clips from the center to remove the power cable.

Step 7



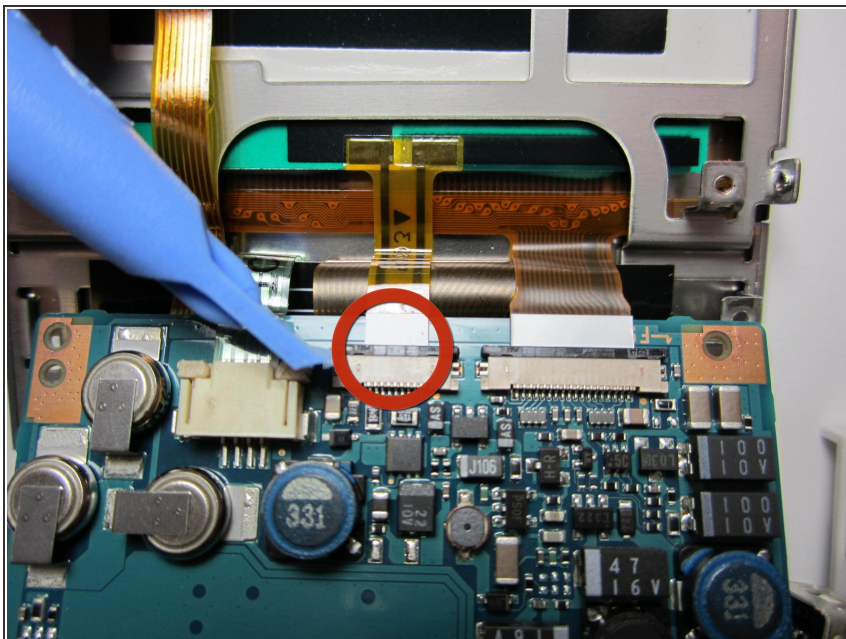
- Rotate the motherboard toward you to show the cables on the opposite side of the motherboard.

Step 8



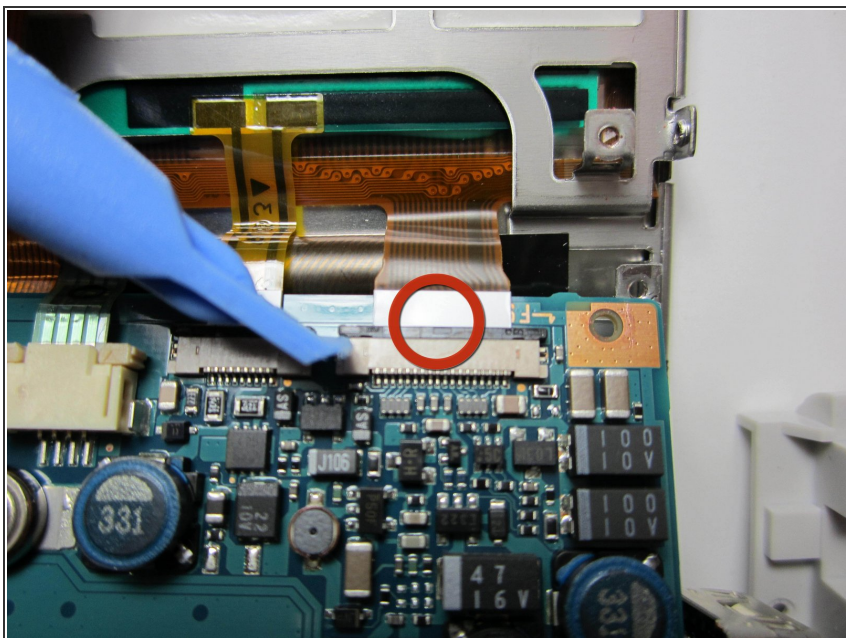
- Extend both sides of the left clip to remove the power cable.

Step 9



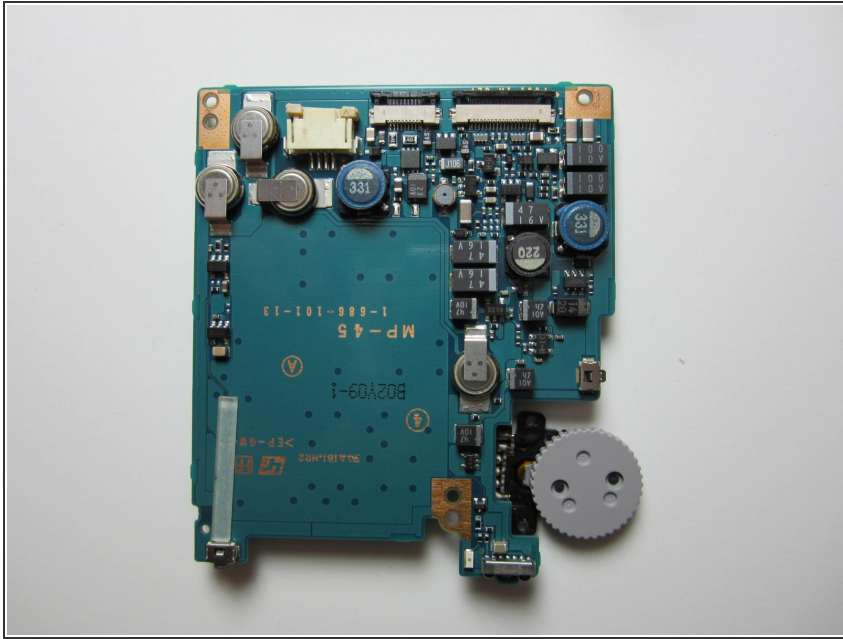
- Pull out the center clip to remove the power cable.

Step 10



- Pull the right clip out to remove the right cable.

Step 11



- The motherboard is removed. To install the new motherboard, follow the directions in reverse.

To reassemble your device, follow these instructions in reverse order.