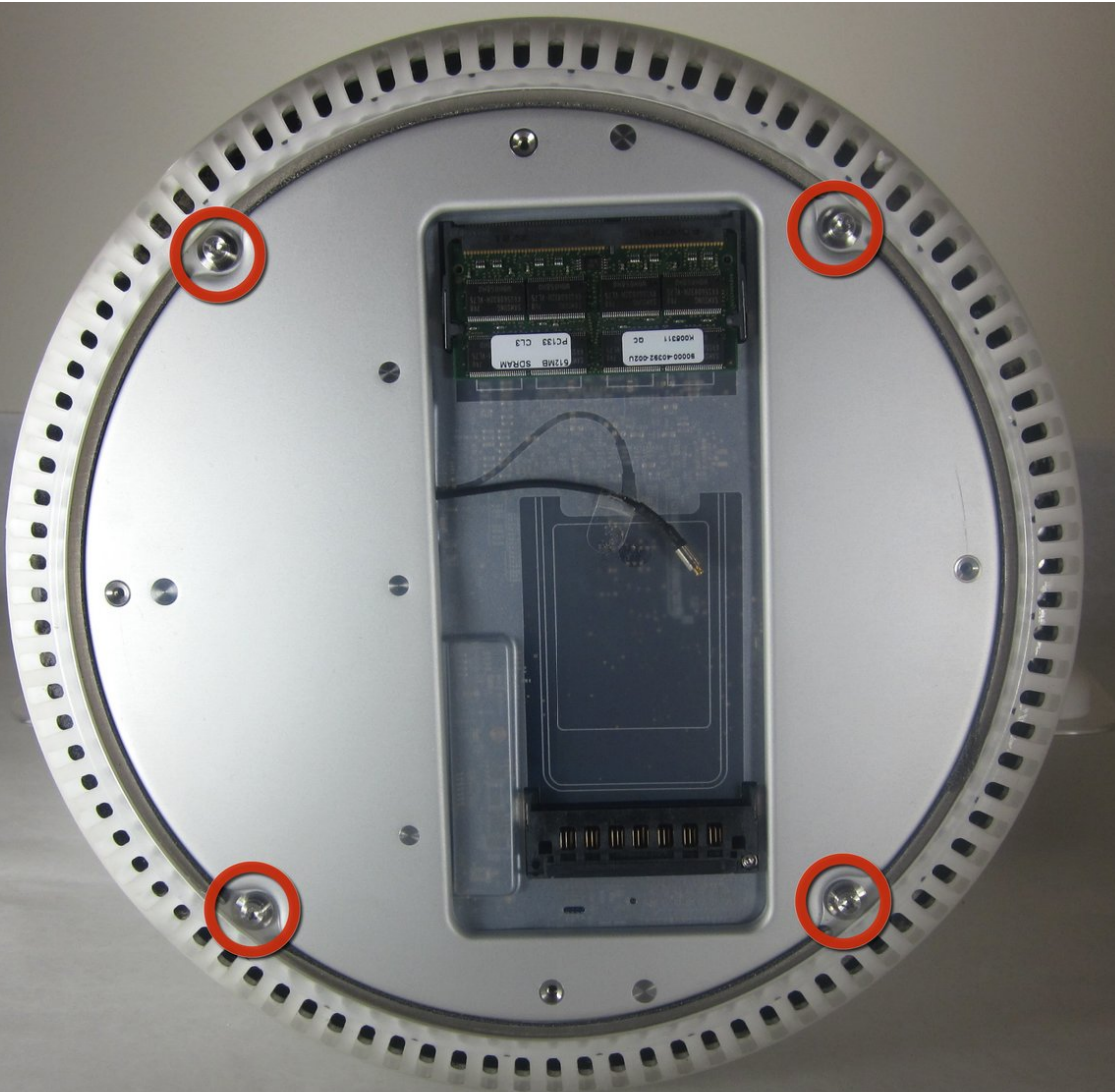




iMac G4 17 800 MHz EMC 1936 Bottom Plate Housing Replacement

Remove bottom housing

Written By: Justin



INTRODUCTION

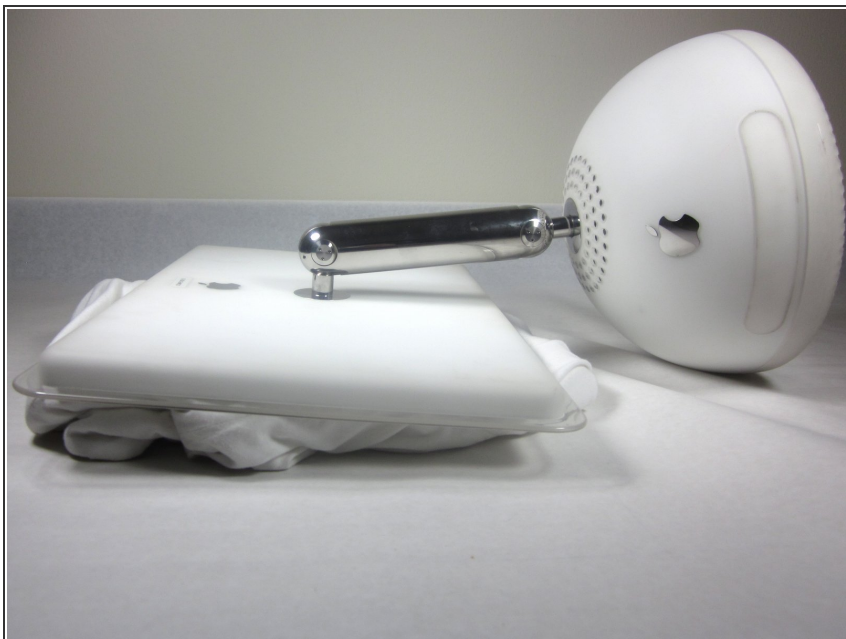
Remove bottom housing to reveal the inside of the iMac.



TOOLS:

- [T15 Torx Screwdriver](#) (1)
-

Step 1 — Bottom Plate



- Unplug all the cables from the computer, including the power cable. Lay the computer face-down, supporting the neck and base with a soft cloth under the screen.

Step 2



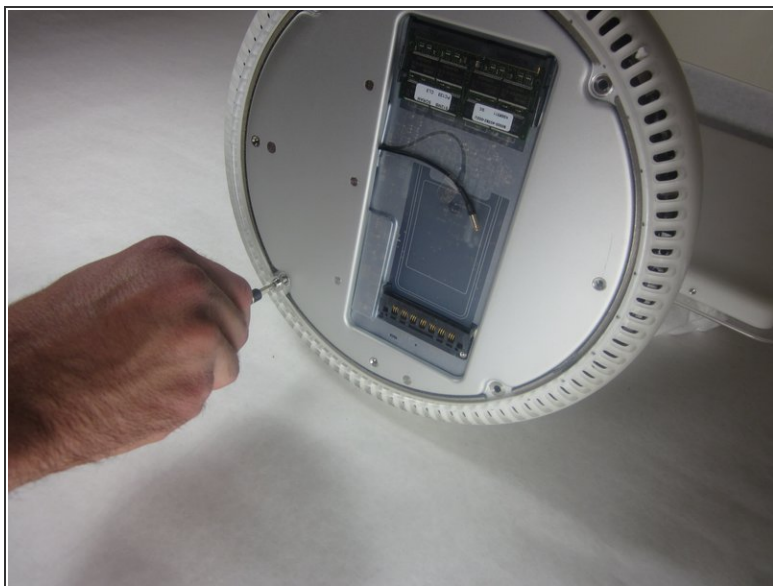
- Loosen the four Phillips #0 screws.

Step 3



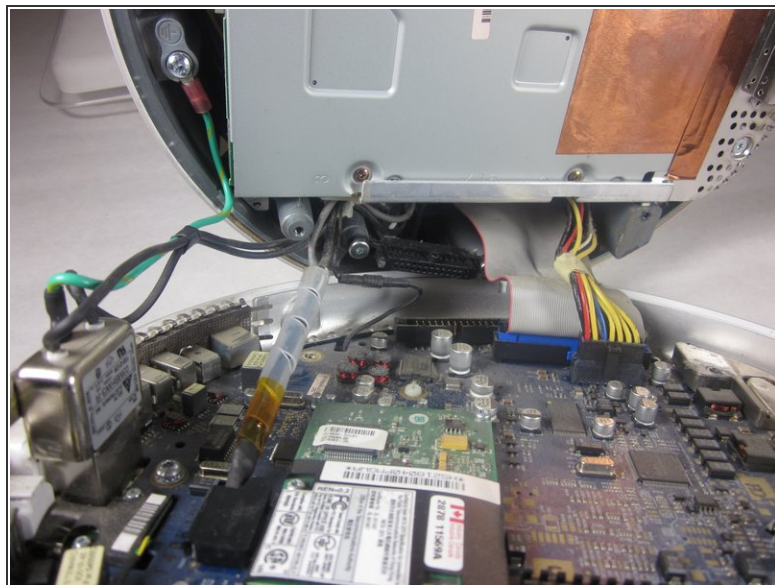
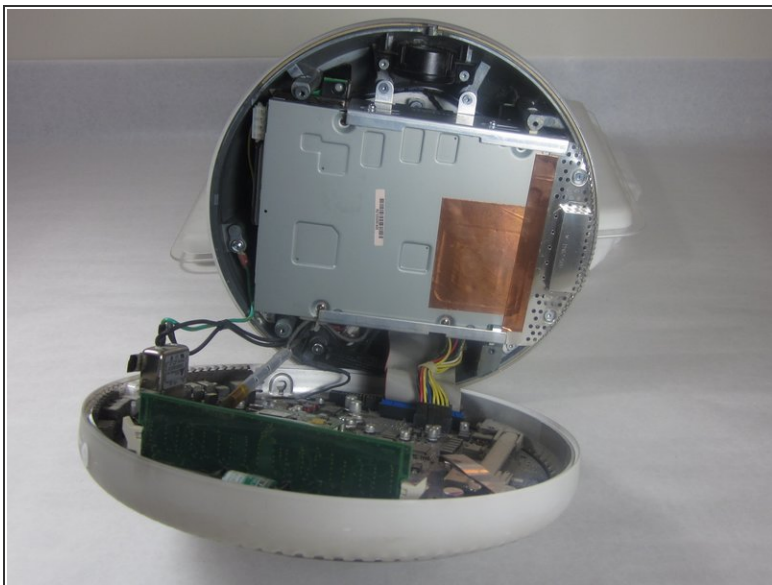
- Carefully remove the base access panel.

Step 4 — Bottom Plate Housing



- Remove the four 25mm T-15 screws.

Step 5



- Open the housing plate.

⚠ Be gentle with the wires still connected to the logic board so as not to ruin the cables.

- A fixed plug connector between the logic board and upper unit will cause some resistance. Pull gently but firmly.

To reassemble your device, follow these instructions in reverse order.