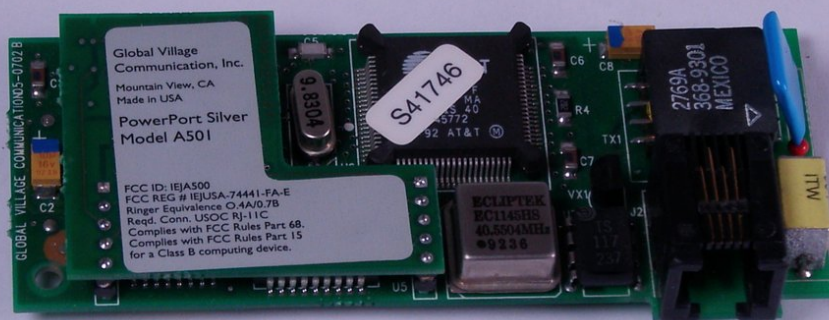




Macintosh PowerBook 165c Modem Card Replacement

This guide will demonstrate how to replace the Macintosh PowerBook 165c Modem Card.

Written By: John



INTRODUCTION

Use this guide to replace the Modem Card.



TOOLS:

- [T10 Torx Screwdriver](#) (1)
 - [T8 Torx Screwdriver](#) (1)
-

Step 1 — Battery



- Orient the computer so the battery is facing you.
- Slide the gray plastic battery cover to the right.

Step 2



- Pull the battery toward yourself until it is fully detached.

Step 3 — Input/Output Door



- Orient the computer right side up with the rear facing you.
- Open the Input/Output (I/O) door.

Step 4



- Carefully bend the door into an arch until one of the pins releases from its slot.
- Once one of the pins is free, remove the I/O door from the computer.

Step 5 — Lower Case



- Orient the computer with the bottom facing up and rear facing you. You should be able to read the Macintosh label in this position.

Step 6



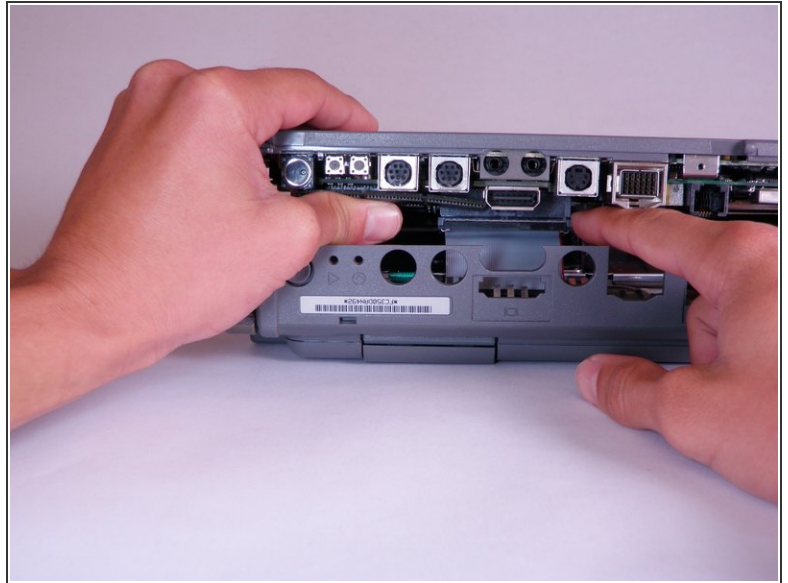
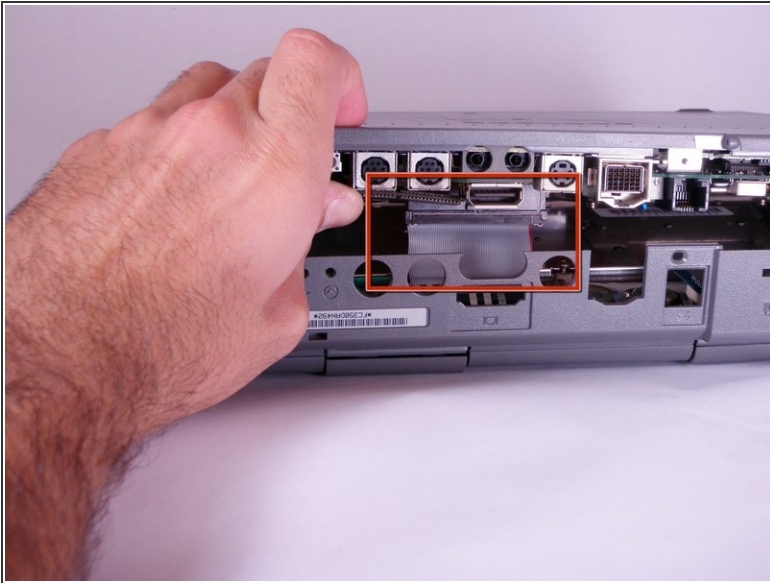
- Use a T8 torx screwdriver to remove the 6.8mm long screw above and to the right of the modem jack.
- Twist counter clockwise to remove the screw.

Step 7



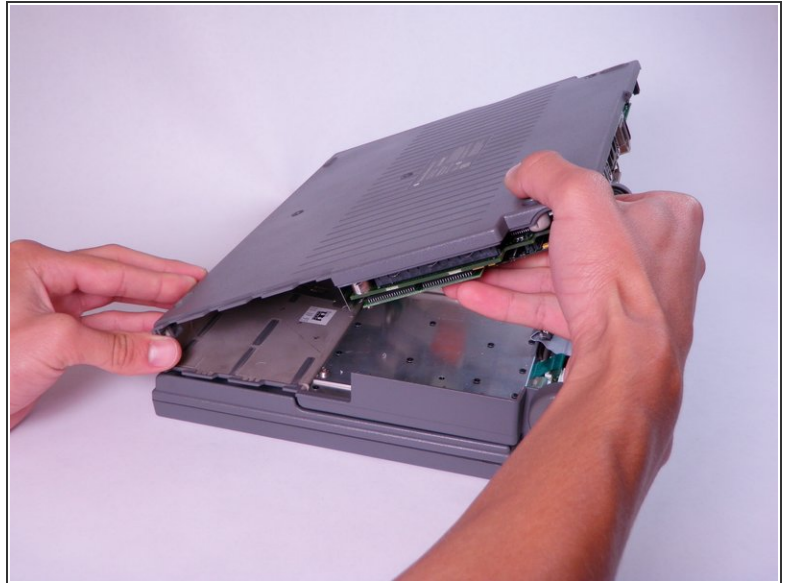
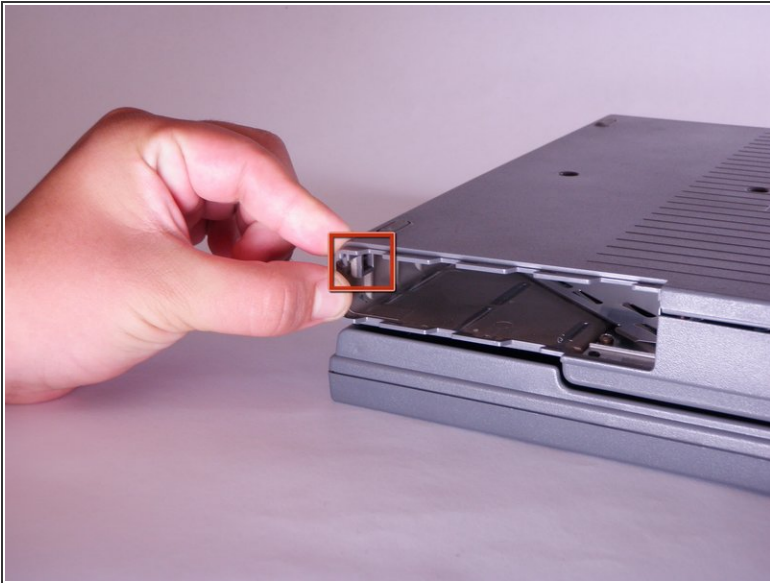
- Use a T10 torx screwdriver to remove the four, 18mm long screws from the lower case.

Step 8



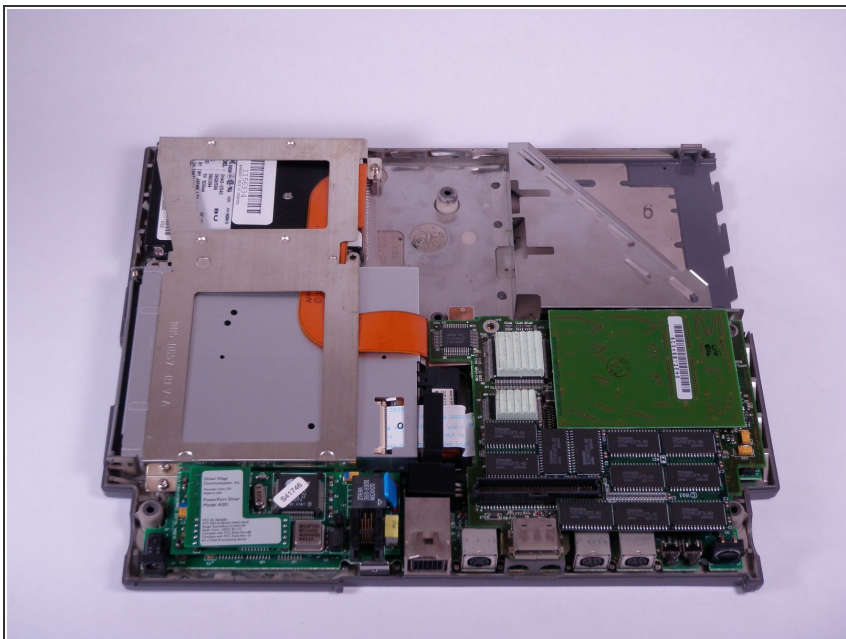
- Place your hands on the lower case, just above the I/O panel, and slowly lift the lower case a few inches above the main body of the computer.
 - Release the large, gray interconnect ribbon cable just behind the I/O panel.
- ⚠ Caution: Lower case cannot be fully removed until two plastic clips in the front corners are released. See the following step for details.

Step 9



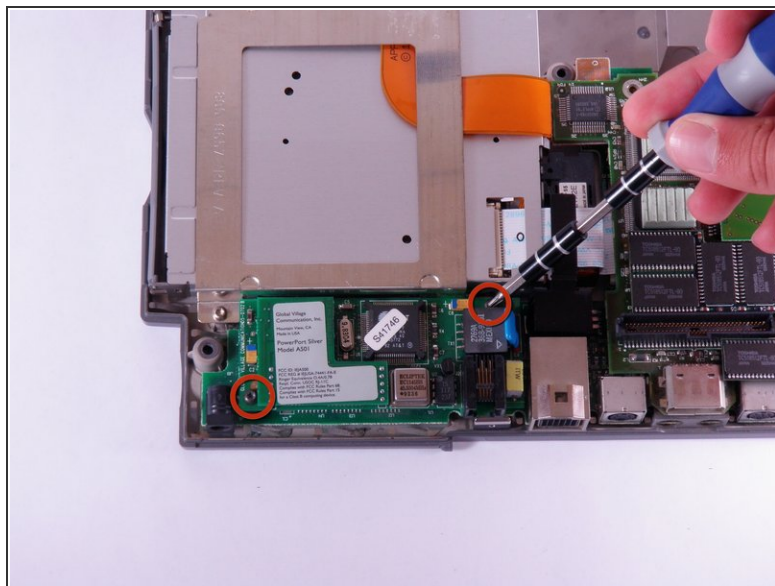
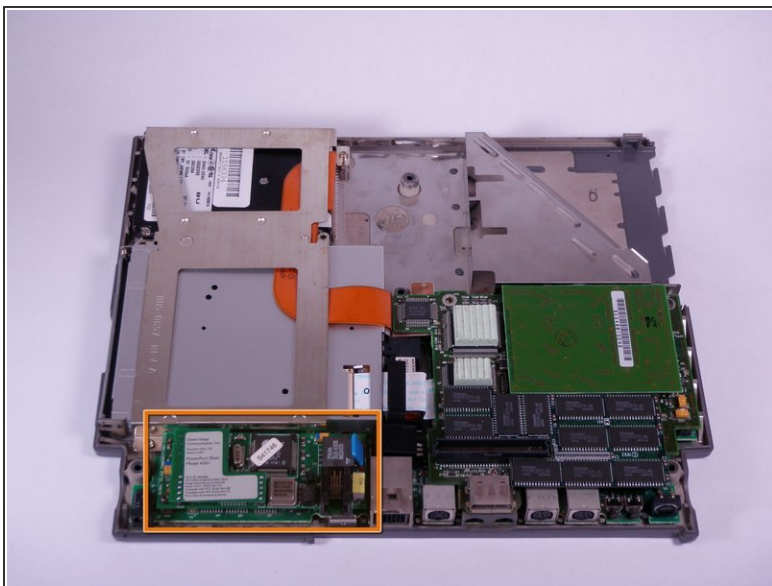
- Place your thumb on the upper case, inside the empty battery slot, and your index finger near your thumb on the left side of the lower case.
- Pinch your thumb and index finger towards each other to release the clip. Without releasing pressure on the pinch grip, use your index finger to push the lower case upwards.
- Lift the lower case to remove it.

Step 10 — Modem Card



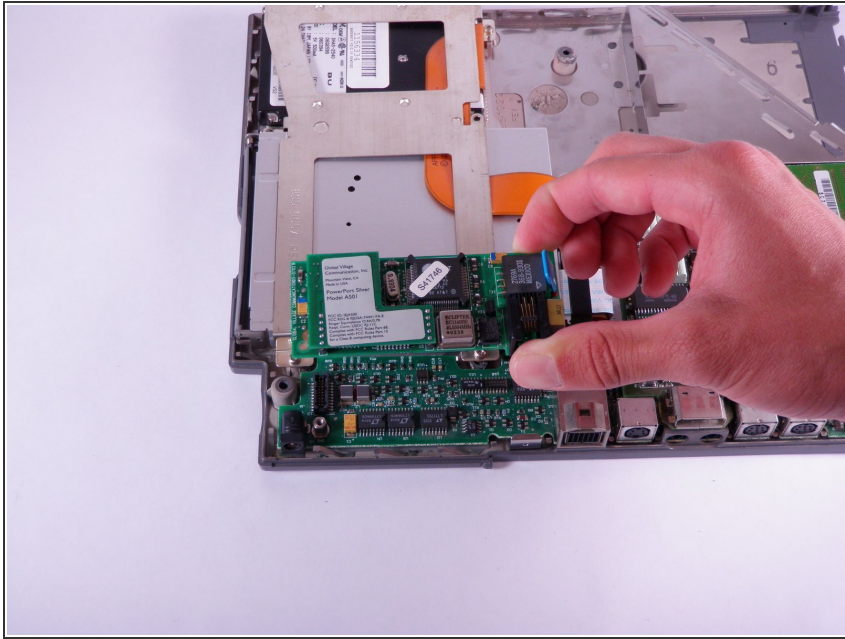
- Orient the computer so the ports are facing you.

Step 11



- Locate the Modem Card on the lower case.
- Use a T8 torx screwdriver to remove the two, 7.7mm long screws from the two corners.
- ⓘ The modem card is an optional component on the Macintosh 165c, and may not be included in all devices.

Step 12



- Lift the modem card directly upward until it releases from the connector.
- If the modem card is difficult to remove, gently jostle it back and forth as you lift up.

To reassemble your device, follow these instructions in reverse order.