



# Sony Ericsson s710a Teardown

The Sony Ericsson s710a is a camera phone with...

Written By: Alexander



# INTRODUCTION

The Sony Ericsson s710a is a camera phone with all of the features expected of a phone in the mid '00's.

---

## TOOLS:

[Phillips #00 Screwdriver](#) (1)

[iFixit Opening Tool](#) (1)

---

## Step 1 — Battery



- Remove the back cover by sliding it off.

## Step 2



- Pull the battery out using your finger.

## Step 3



- The battery can now be replaced.
  - ① The battery is a 780 mAh rechargeable Lithium Ion battery.

## Step 4 — Sony Ericsson s710a Teardown



- Remove the four 6mm screws behind the battery.

## Step 5



- Remove the plastic piece near the base of the keypad.
  - ① This will require prying it off with a plastic opening tool and breaking the seal with the glue. Unfortunately there is no way around this.
- Then remove the two 6mm screws beneath the plastic cover with a Phillips head screwdriver.

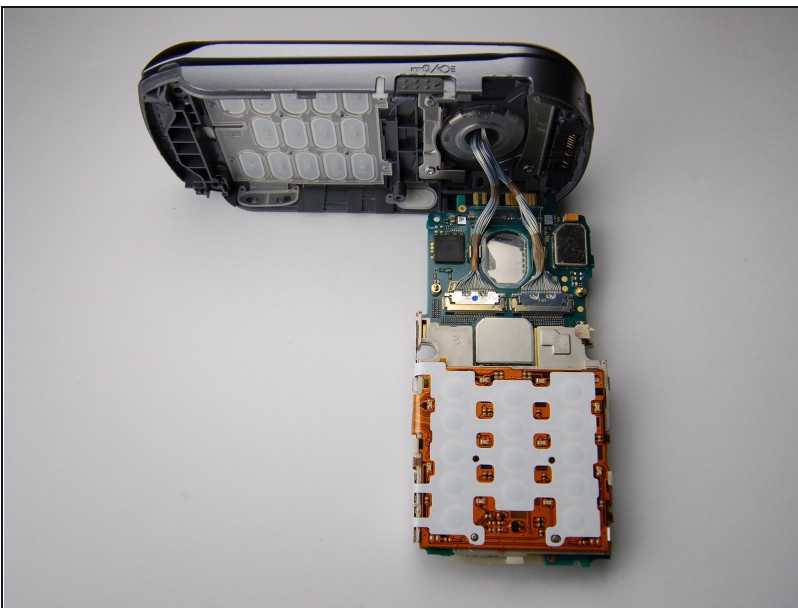


## Step 6



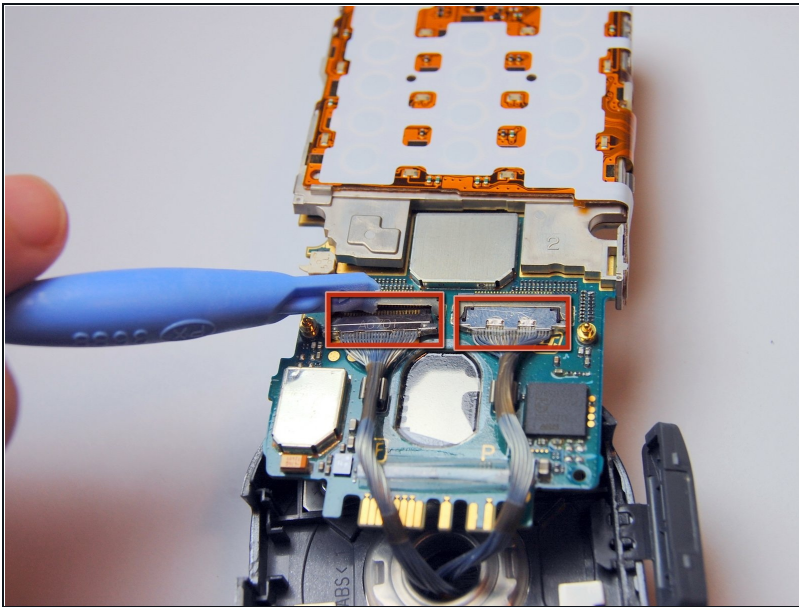
- Use the plastic opening tool to pry off the back cover of the phone. This will require a bit of careful work.
  - ① You should start prying the back cover from the SD card slot. Alternate prying the back cover on each side until it pops off.

## Step 7



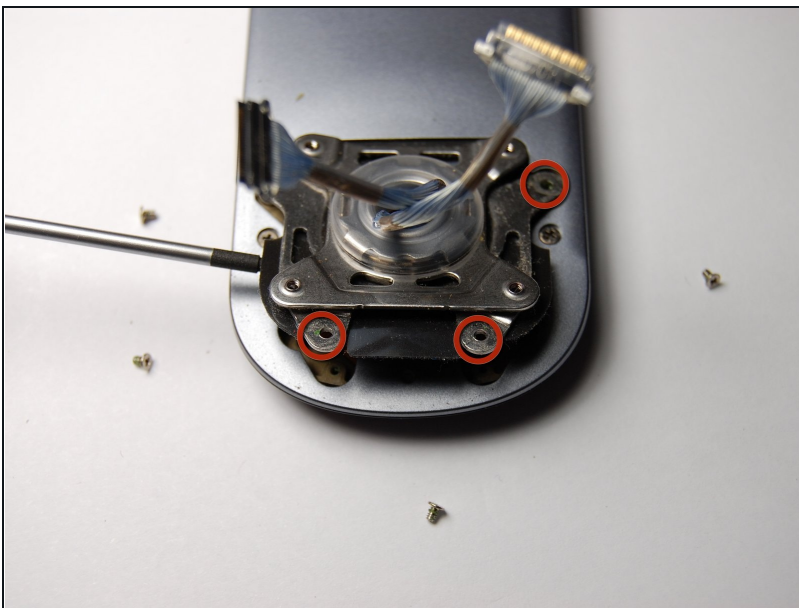
- Once you have removed the back cover, use the plastic opening tool to carefully pry out the circuit board.

## Step 8



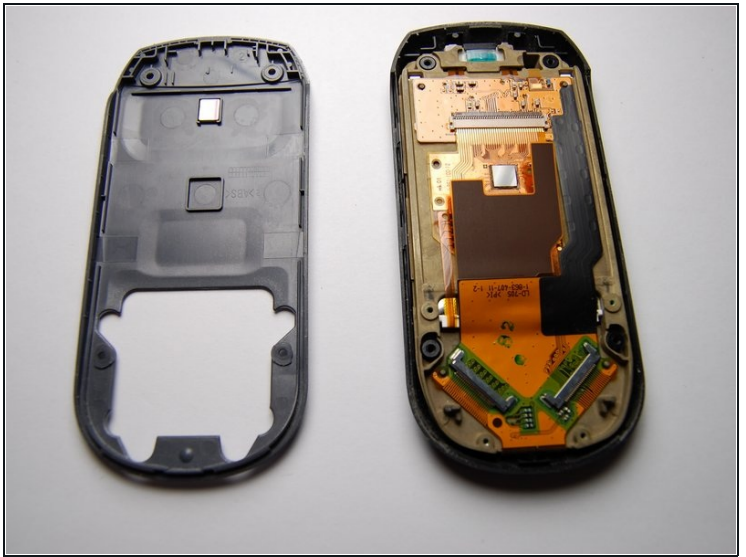
- Remove the LCD cable connectors coming from through the hinge hole with a flathead screwdriver.
- ☑ Be sure to record which port each cable was in, including the orientation in which they were plugged into each socket.
- Now the two parts of the phone are separated.

## Step 9



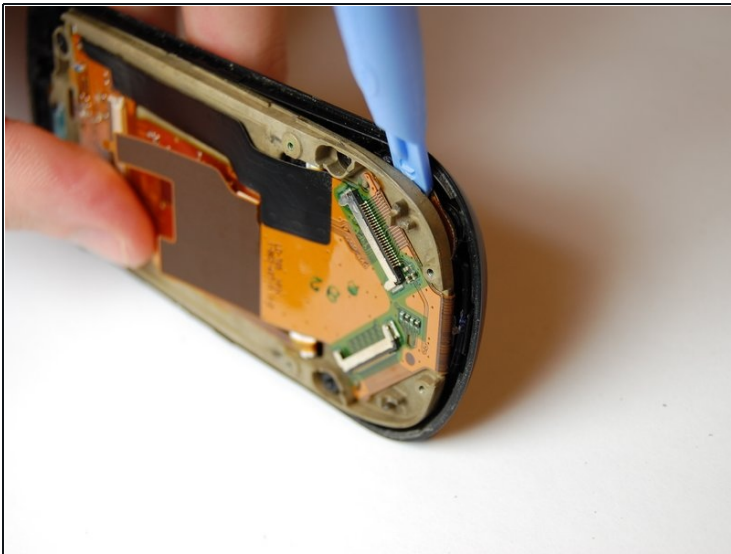
- On the non-camera side of the phone, remove the four 3mm screws and two 2.3mm screws holding down the twist-structure.
- When you lift this off, you will need to disconnect the cables from the other side using the same method as in Step 5.
- ☑ Again, be sure to record which port each cable was in, and the orientation in which they were plugged into each socket.

## Step 10



- Remove the plastic piece near the bottom of this side of the phone with the plastic opening tool. This will give you access to two additional screws.
  - ☒ Remember you will have to break the glue seal, but that is alright.
- Remove the four visible 6mm screws. Then remove the back cover.

## Step 11



- In order to remove the LCD screen, use the plastic opening tool to pry the plastic piece from the LCD. Perform this step carefully to avoid scratching the glass screen.



## Step 12



- In this picture, you can see all of the parts in the non-camera side of the phone.
- ① Interestingly, the four control buttons are all one piece

## Step 13



- ① This phone has an array of capabilities:
  - Bluetooth
  - Megapixel Camera
  - MP3 capable
  - Messaging options
- ① This photograph shows the final result of a complete teardown.

To reassemble your device, follow these instructions in reverse order.