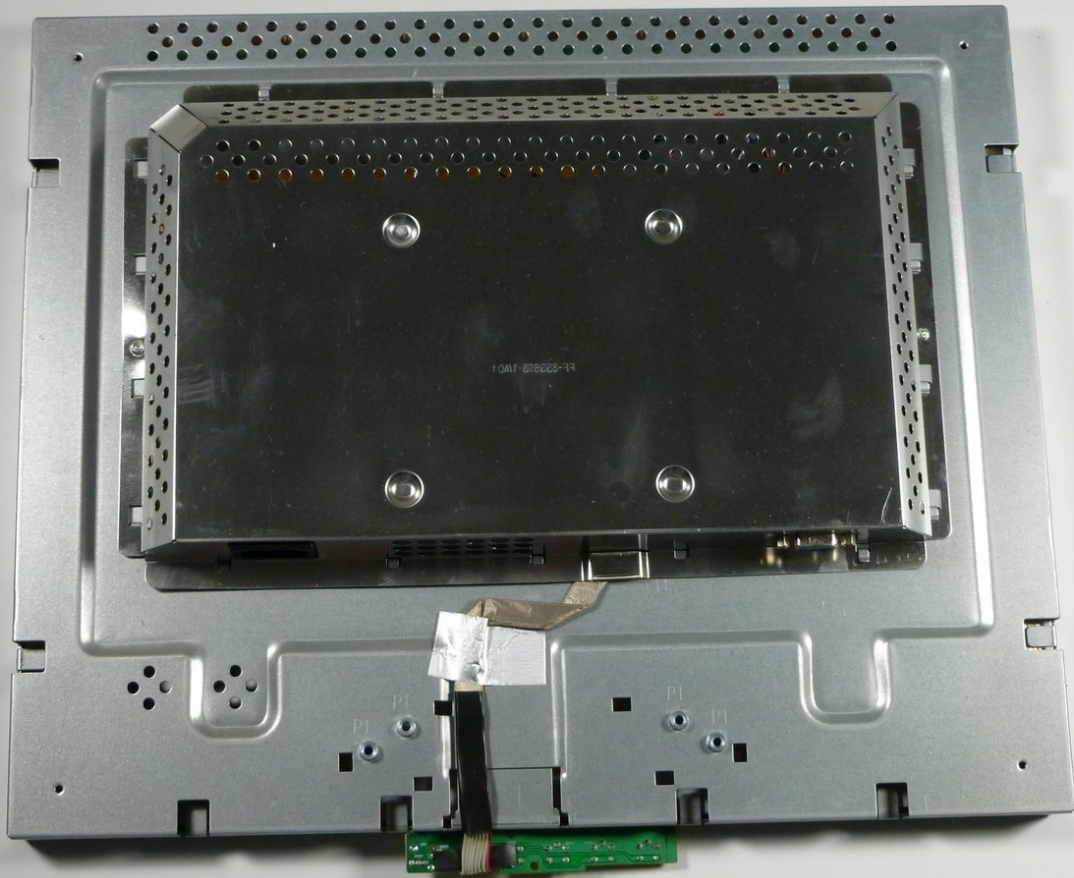




# Acer AL1916 EMI Shield Replacement

This guide will show the user how to access and remove the EMI shield for the computer monitor.

Written By: Taylor Atterbury



# INTRODUCTION

The EMI shield protects the power supply and circuit board from electromagnetic radiation.



## TOOLS:

- [Large Needle Nose Pliers](#) (1)
- [Phillips #2 Screwdriver](#) (1)
- [iFixit Opening Tools](#) (1)



## PARTS:

- [Acer AL1916 EMI Shield](#) (1)

## Step 1 — Stand



- ⓘ Lay the monitor on a flat surface so that the back is facing up.

## Step 2



- Grab the hinge cover with both hands on either side of the stand.
- Squeeze inwards with your thumbs and fingers and lift up to remove the hinge cover.



## Step 3



- Remove the four 12.1 mm Phillips #2 screws that hold the stand to the monitor.
- ⚠ Support the monitor while removing the screws to prevent the monitor from falling.
- Lift up to detach the stand.

## Step 4 — Outer Case



- Remove the five 9.5 mm Phillips #2 screws located around the perimeter of the monitor.

## Step 5



- Starting at the corner of the monitor, wedge the small plastic opening tool between the back cover and the display bezel.
  - Tilt the plastic opening tool up to separate the back cover from the display bezel.
  - Continue around the perimeter of the monitor until the display bezel comes off.
- i** A reasonable amount of force is necessary to detach the back cover from the display bezel.

## Step 6

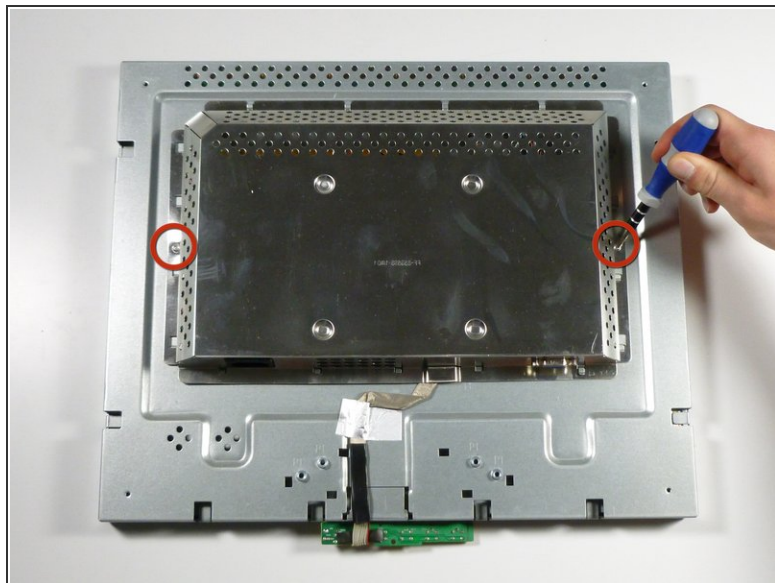


**i** Reposition the monitor so that the back is facing up.

- Grab the corners of the monitor and jiggle them upwards to detach the back cover from the inside of the monitor.
- Lift the back cover up.

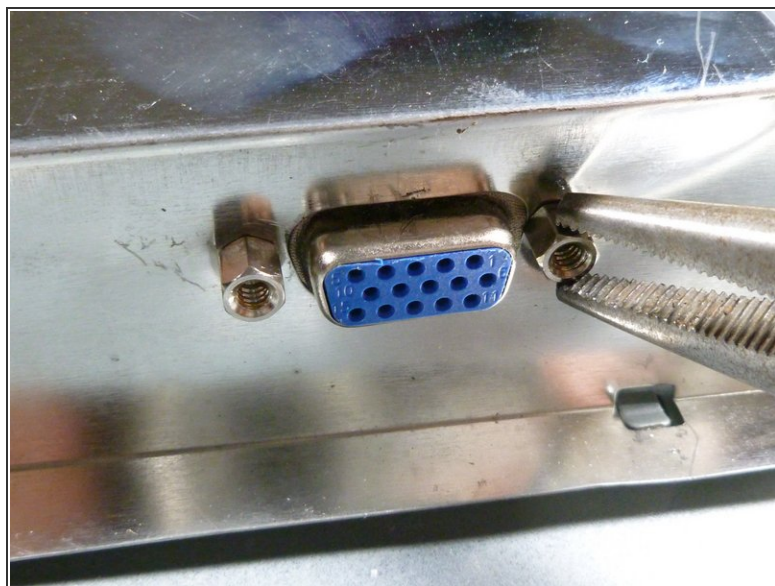


## Step 7 — EMI Shield



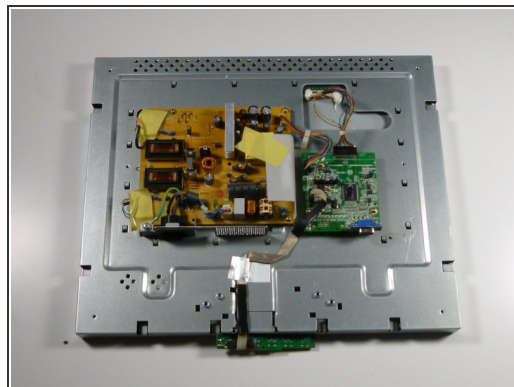
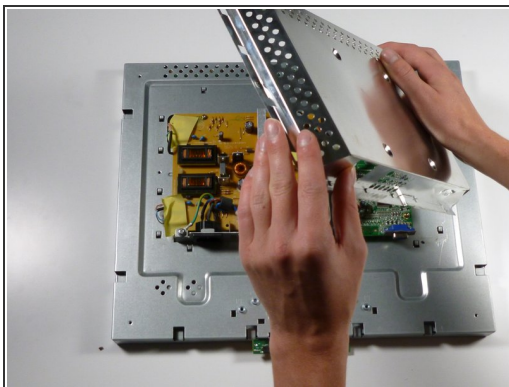
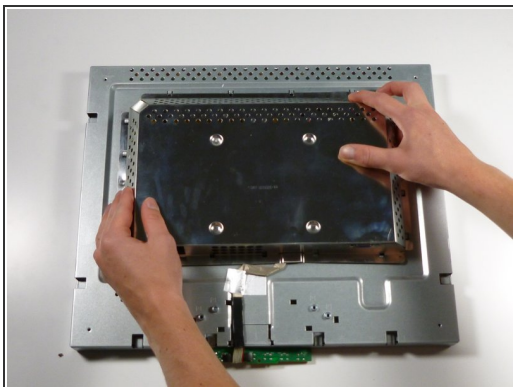
- Remove the two 5.7 mm Phillips #2 screws located on either side of the EMI shield.

## Step 8



- Using a nut driver (or if necessary, needle-nose pliers), remove the two nuts on either side of the VGA input.

## Step 9



- Grab the metal casing by the sides and slide it down towards the bottom of the monitor.
- Lift up to remove the metal casing.

⚠ Beware, metal casing is sharp!

To reassemble your device, follow these instructions in reverse order.