



BlackBerry Curve 8900 Keypad Replacement

If you are having difficulties using the...

Written By: Renae Bishop



INTRODUCTION

If you are having difficulties using the keyboard on your BlackBerry Curve 8900, this guide will walk you through replacing the defective or faulty keyboard.

A functioning keyboard will input information when you press the keys into the device. However, a defective or faulty keyboard will not process the information inputted when keys are pressed. Keyboards can start to fail over time due to consistent use.

TOOLS:

[T6 Torx Screwdriver](#) (1)

[iFixit Opening Tool](#) (1)

Step 1 — Remove the battery



- Remove the back cover and the battery from the device.

Step 2 — Remove the protective cover



- 4 screws should be visible. Pry off the lower portion of the back to reveal all 6 screws.

Step 3 — Remove the screws from the midframe



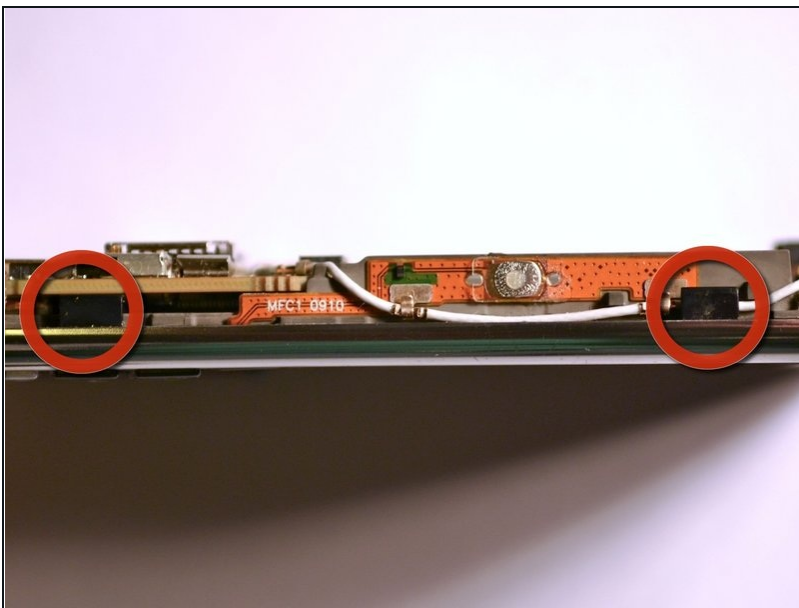
- Remove all six T6 screws from the midframe.

Step 4 — Split apart the device



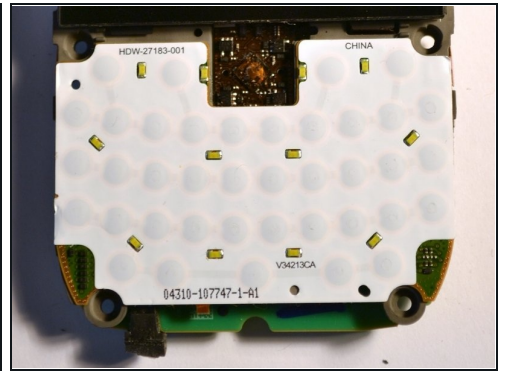
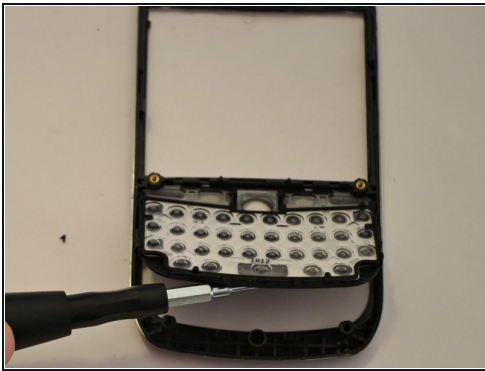
- Separate the midframe from the rest of the device.

Step 5 — Remove the motherboard



- Gently pry back the plastic tabs that secure the motherboard to the case.
- Slowly work your way around the case prying the tabs until the motherboard comes free.
- Remove the motherboard.
 - ⓘ The keypad and navigation ball may become loose and fall away from the motherboard.

Step 6 — Remove the keypad



- Lift the keypad from the motherboard.
- ☐ When replacing the keypad, be sure that the navigation ball is in its original position.

To reassemble your device, follow these instructions in reverse order.