



Sony Handycam CCD-TR5 Battery Terminals Replacement

Removing and replacing the battery terminal can be crucial in order to restore power to your camcorder.

Written By: Emma



INTRODUCTION

Removing and replacing your battery can be crucial in restoring power to your camcorder.



TOOLS:

- [Phillips #00 Screwdriver](#) (1)
-

Step 1 — Battery Terminals



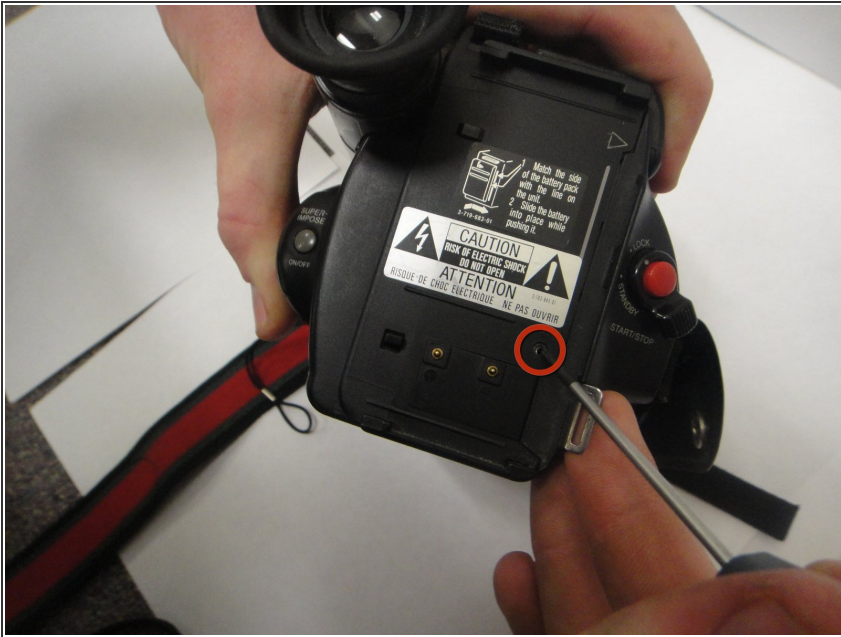
- Remove bottom screws.

Step 2



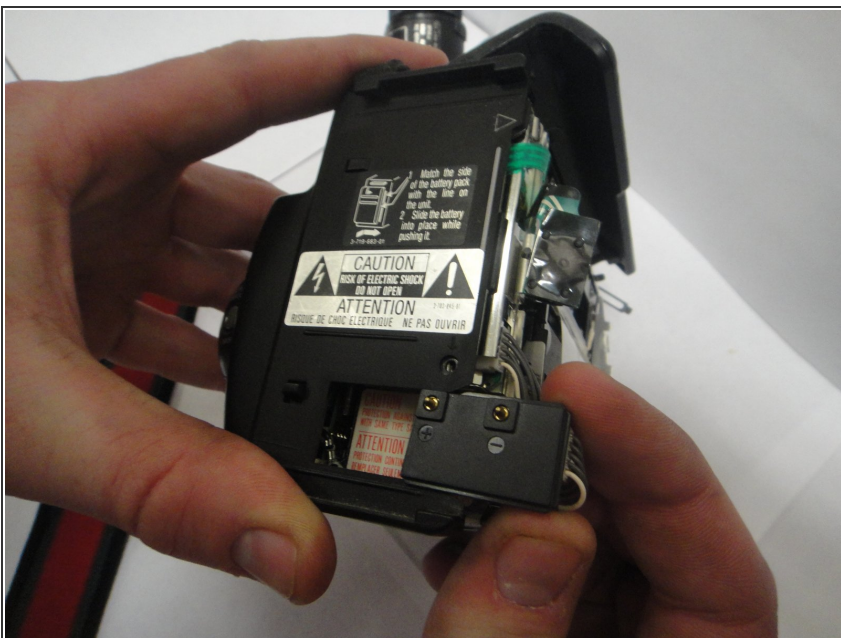
- Remove side cover screws.

Step 3



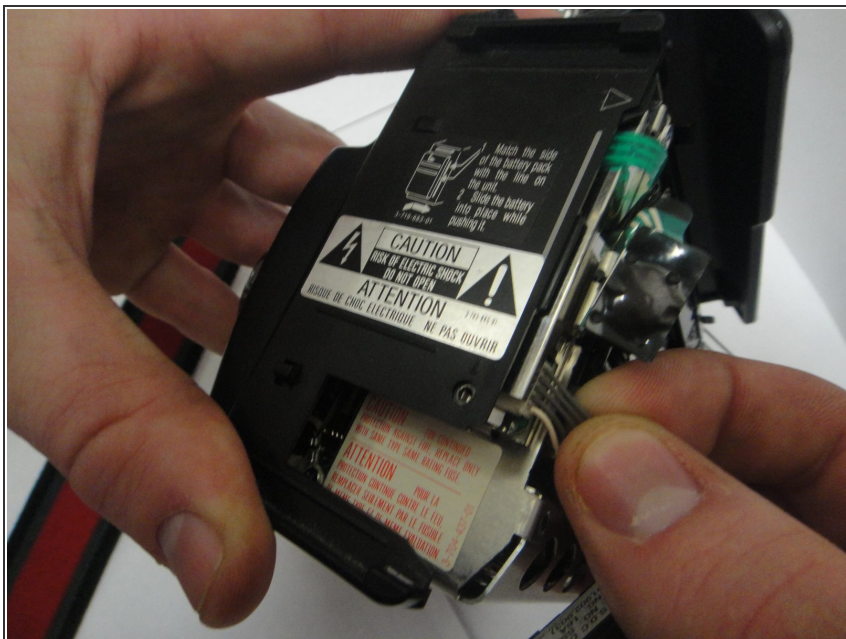
- Remove battery terminal screw.

Step 4



- Remove the terminal.

Step 5



- Pull battery terminal plug from camera.

Step 6



- Your battery terminal is now detached from the camcorder.

To reassemble your device, follow these instructions in reverse order.