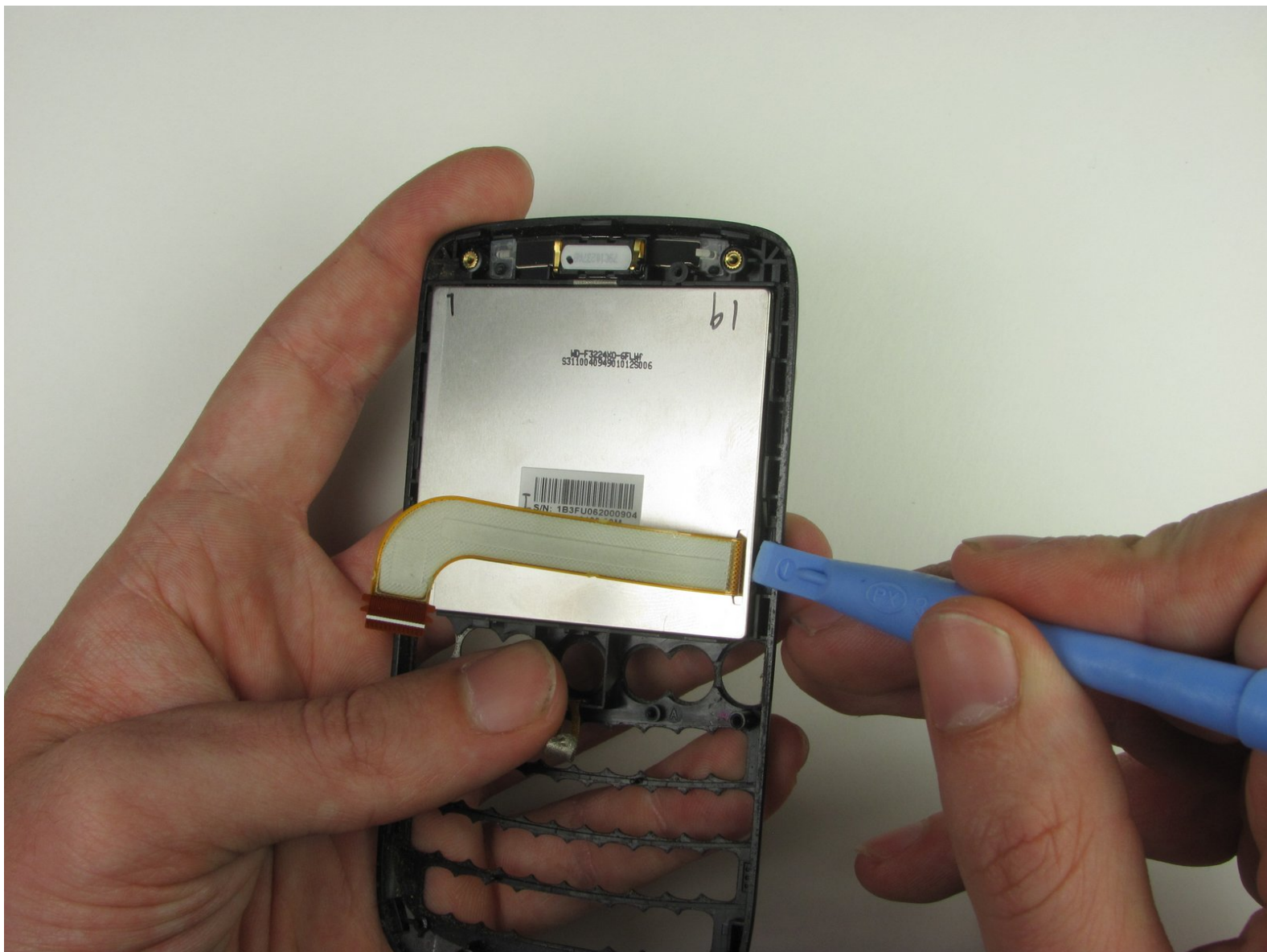




HTC Maple 100 Front Panel Replacement

This guide will show you how to remove the front panel. This part is a plastic bezel, not any working electronic parts.

Written By: Justin Culbertson



INTRODUCTION

This guide will show you how to remove the front panel.



TOOLS:

- [Phillips #00 Screwdriver](#) (1)
 - [iFixit Opening Tools](#) (1)
 - [T6 Torx Screwdriver](#) (1)
-

Step 1 — Battery



- First remove the back cover of your phone to expose the battery.

Step 2



- Turn the phone over.
- Push forward on the battery with your thumb.

Step 3



- Take the battery out by lifting it upwards.
- ☑ When reassembling, make sure that the battery contacts match up.

Step 4 — Back Panel



- Remove the four 4.9mm T6 Torx screws that secure the back panel to the rest of the phone.

Step 5



- Remove the two 4.3mm Phillips #00 screws that secure the back panel to the rest of the phone.

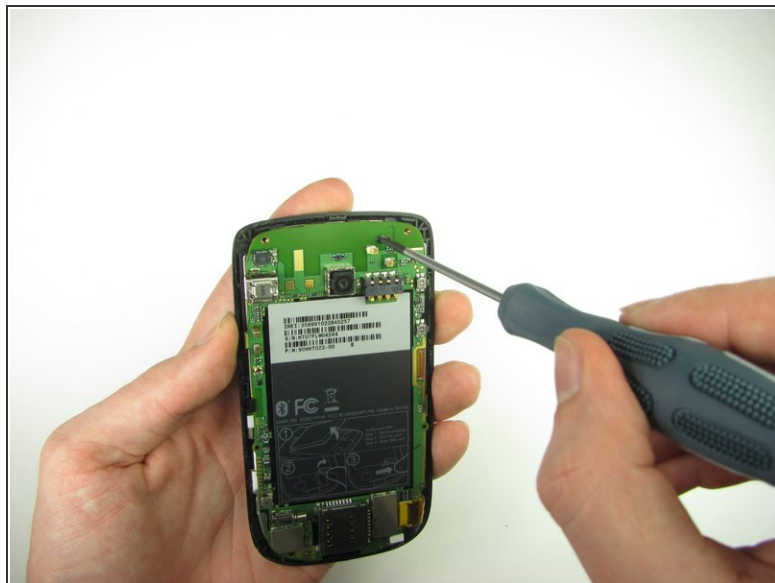
Step 6



- Insert the plastic opening tool along the seams at different points to it pry the clips off.

 This may require a bit of force. The USB port cover may fall off in this step.

Step 7 — Motherboard



- Remove the one 3.3mm Phillips #00 screw.

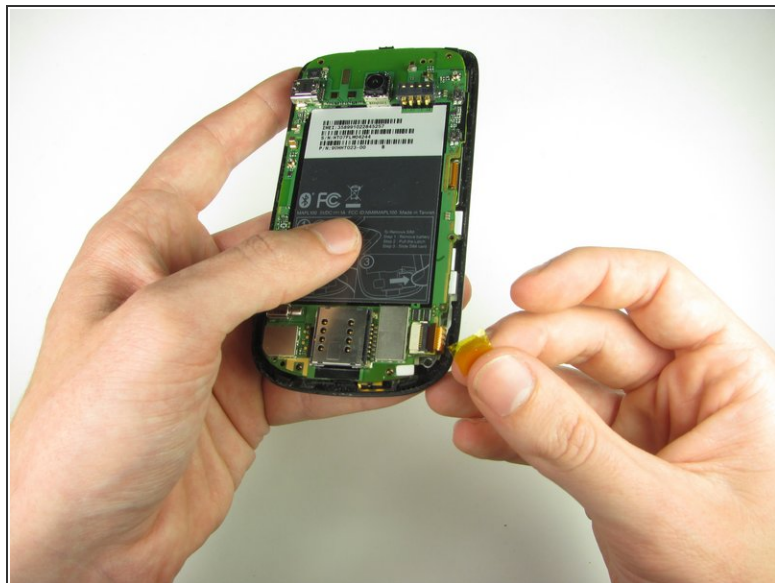
Step 8



- Use your finger or the plastic opening tool to unclip the board.

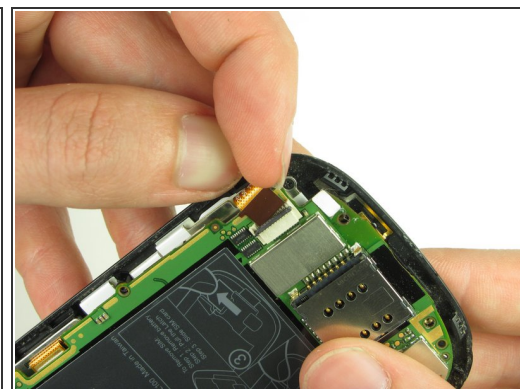
⚠ Be aware of the ribbon cable connected to the motherboard inside the phone.

Step 9



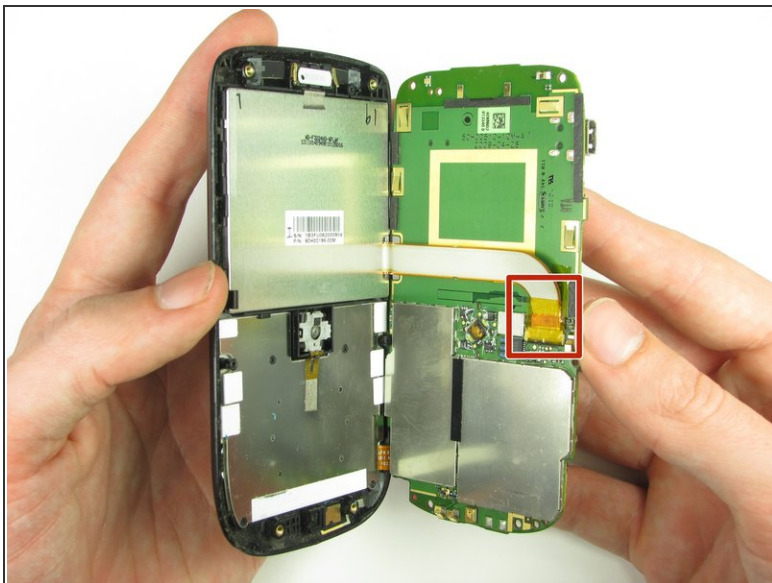
- Peel off the yellow piece of tape from the phone.

Step 10



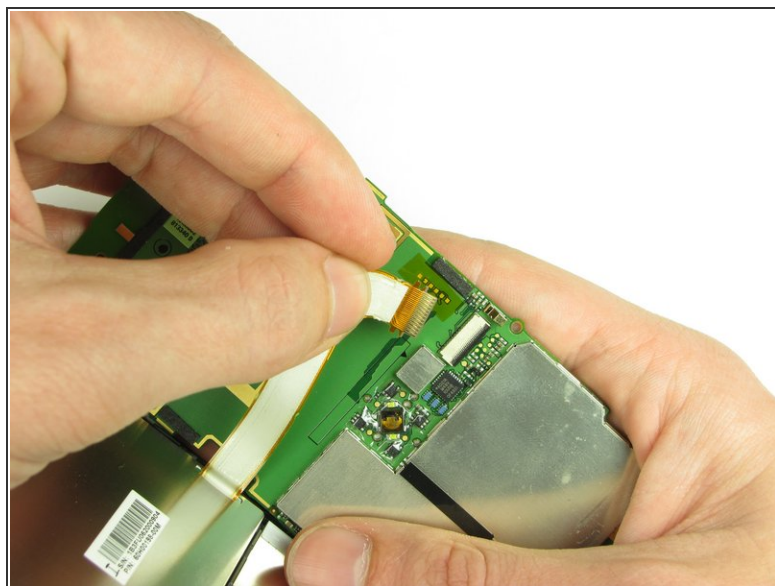
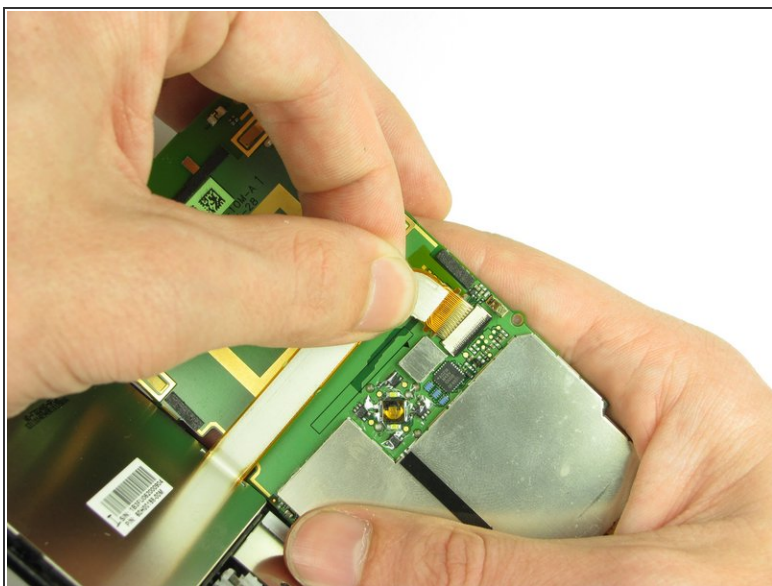
- Flip up the retaining flap with your fingernail or a plastic opening tool.
- Pull on the ribbon cable gently with your fingers.

Step 11



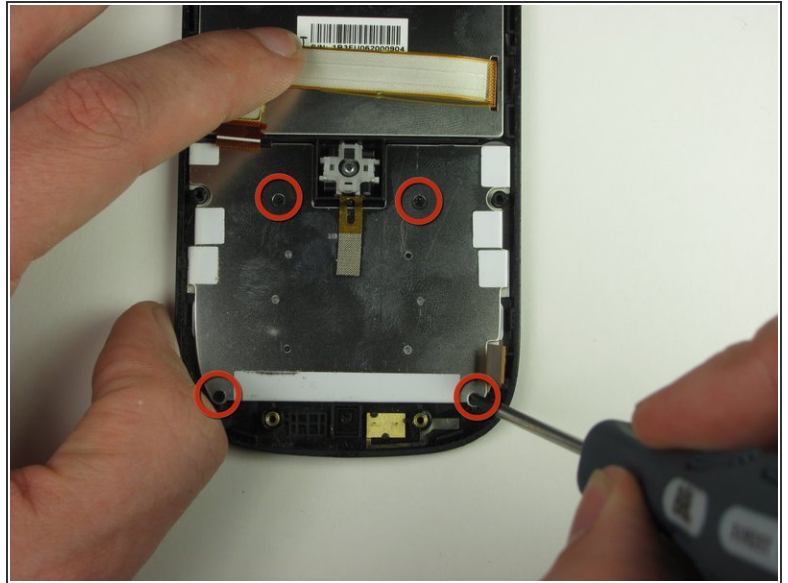
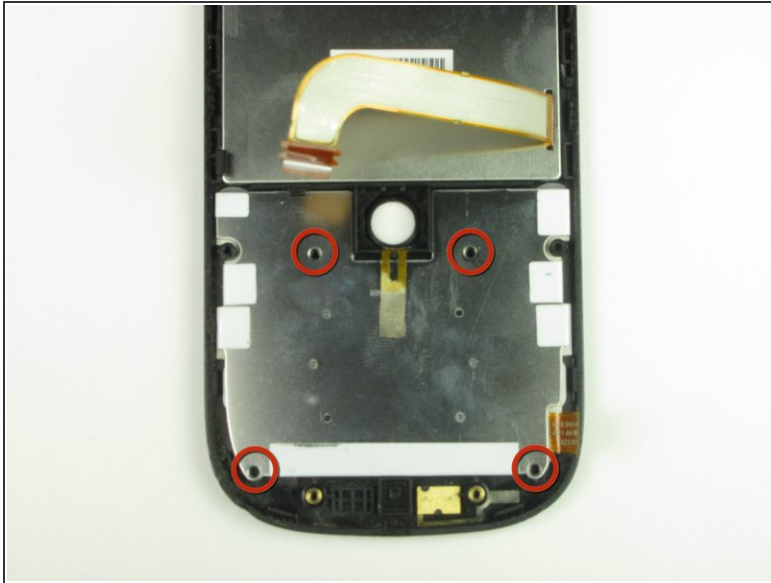
- Split apart the motherboard and front panel.
- Remove the other yellow piece of tape off of the end of the ribbon cable.

Step 12



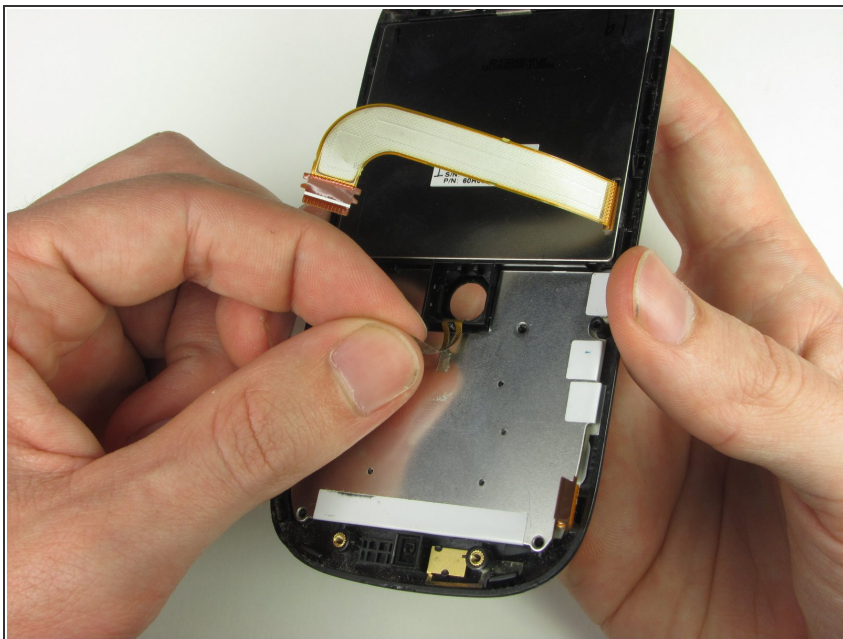
- Gently pull on the ribbon cable to separate the motherboard.

Step 13 — Keyboard



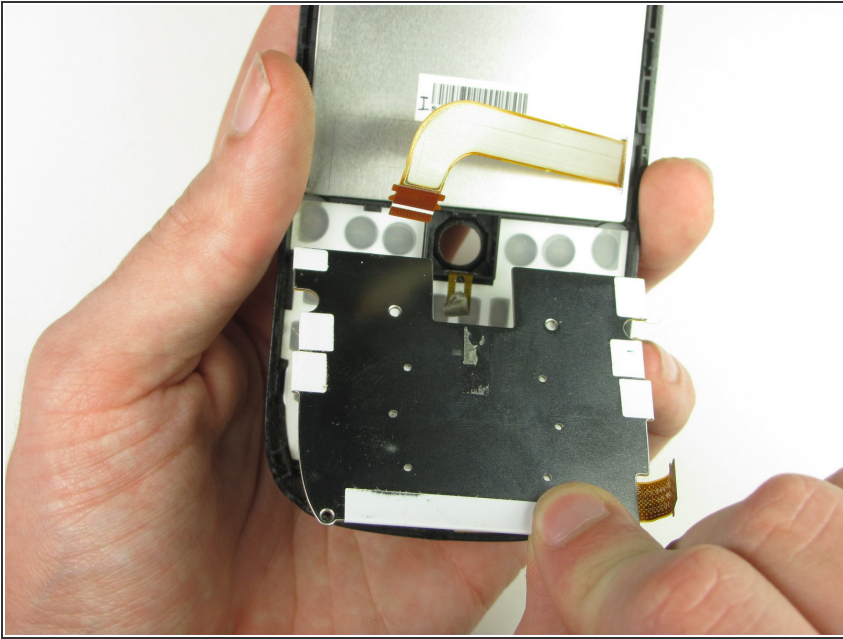
- Remove the four 1.9 mm Phillips #00 screws.

Step 14



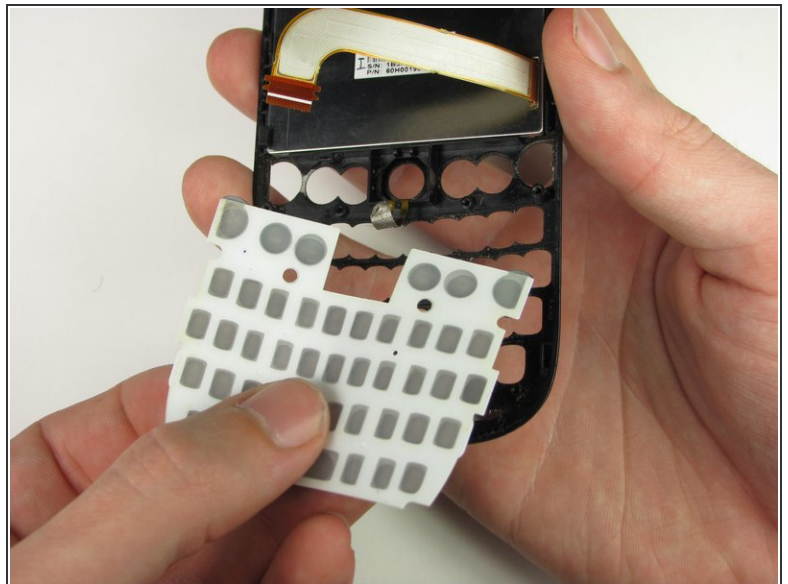
- Peel back the tape gently.

Step 15



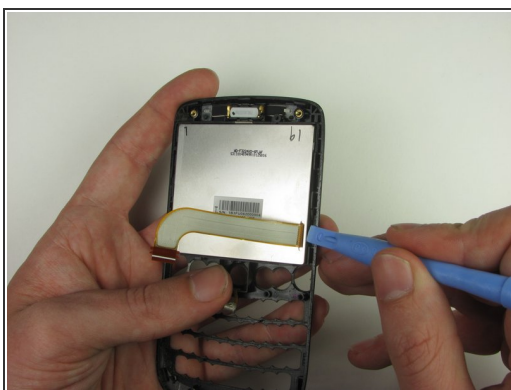
- Remove the board gently.

Step 16



- Remove the keys carefully.

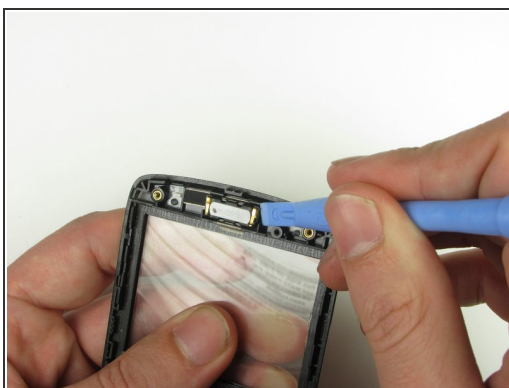
Step 17 — Front Panel



- Using the Plastic Opening Tool, pry out the LCD screen and remove with fingers.

⚠ Be gentle because the LCD screen is fragile.

Step 18



- Use the Plastic Opening Tool to remove the internal ear speaker.

To reassemble your device, follow these instructions in reverse order.