



# De' Longhi CTOV 2103- AZ

De' Longhi Toaster opened. UNPLUG THE POWER !!!

Written By: Schwarzstein



---

## INTRODUCTION

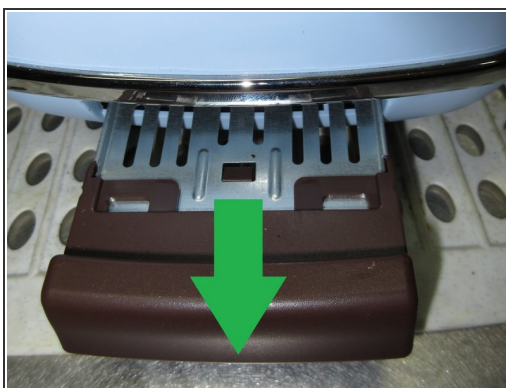
I show how it is opened.



### TOOLS:

- [T10 Torx Screwdriver](#) (1)
  - [Multimeter](#) (1)
-

## Step 1 — Pull the lever



- First unplug the cable. ...Pull off the lever, it is snapped in.
- Pull out the drawer.
- Now clean it with a vacuum.
- On the underside are 4 screws Torx 10 resistant visible - in each corner one.

## Step 2 — Screw



- Detail of the screw

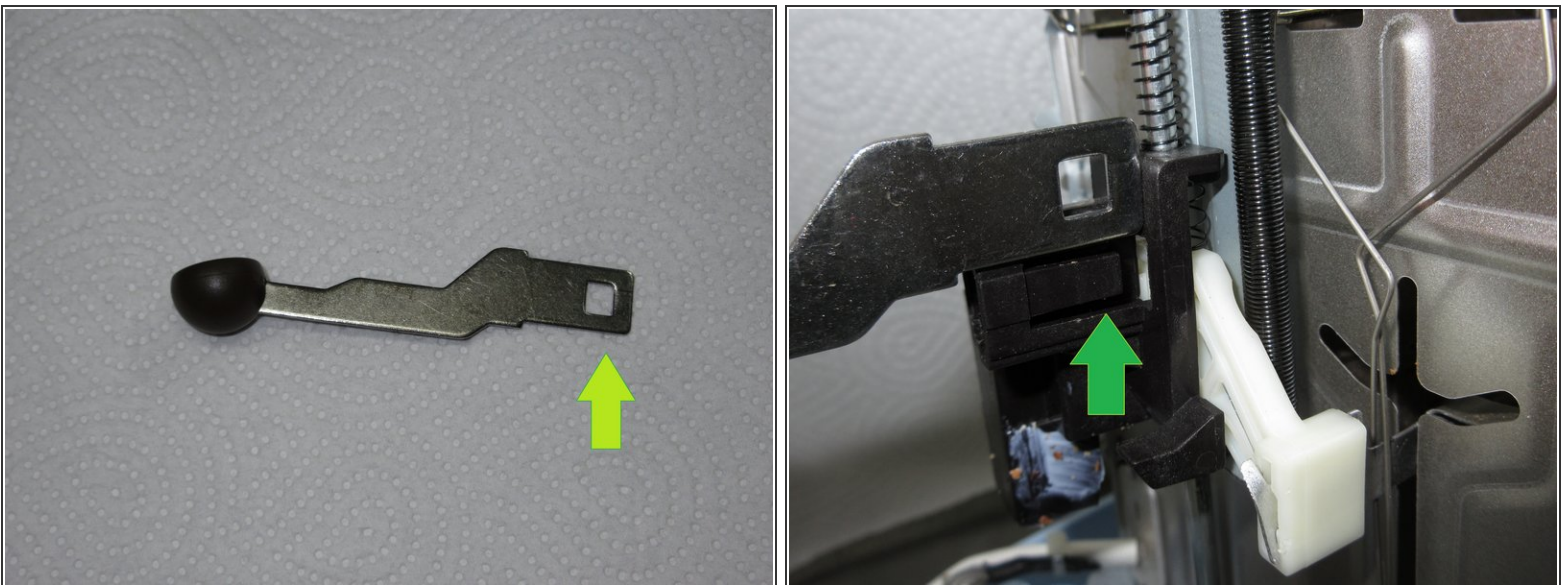


### Step 3 — Housing chrome plastic ring



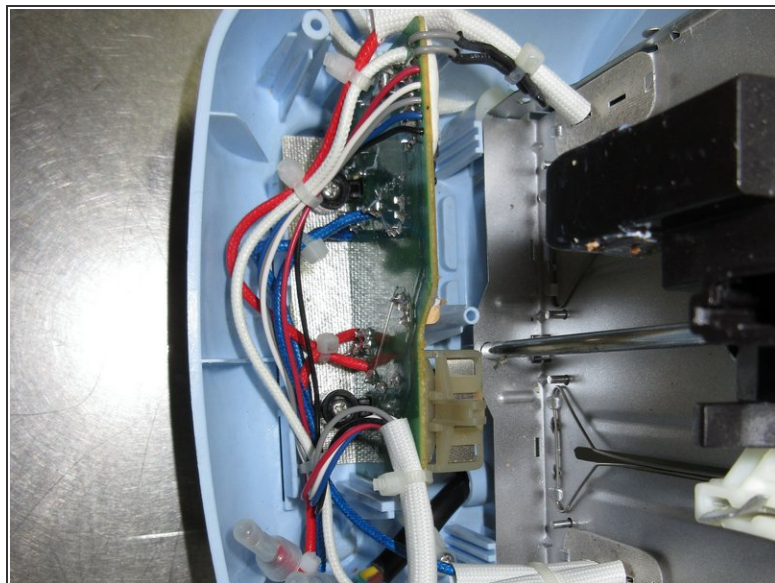
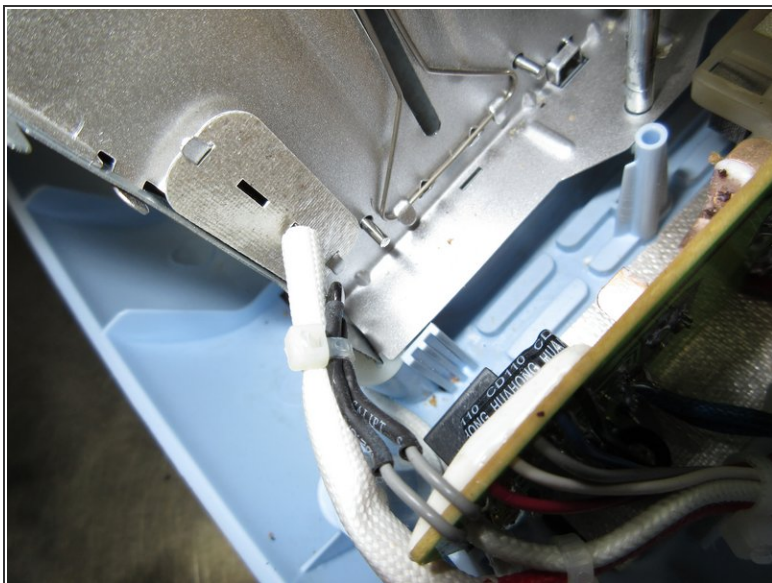
- here you have two pictures of the housing and the chrome plastic frame.

### Step 4 — Lever



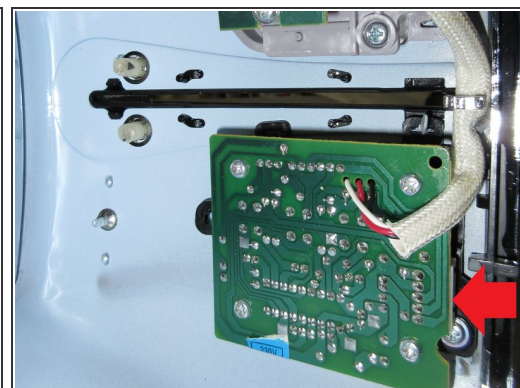
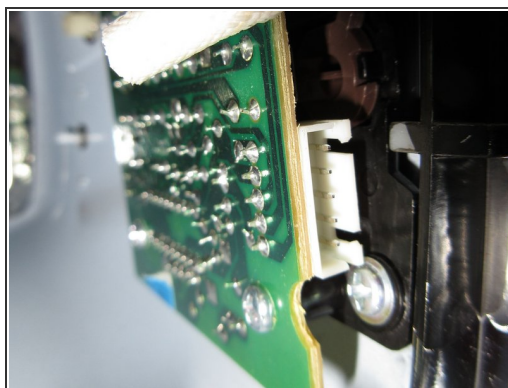
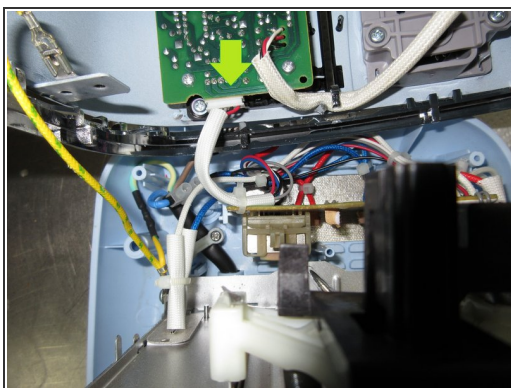
- Here you have details of the lever and how it is snapped in the mechanic.
- This shows you how to unlock it when you dismantle the housing. Good luck. ;)

## Step 5 — Tempeaturesensor



- Detail of the Sensor: It is the little black pearl at the black hoses which is strapped to the white hose.

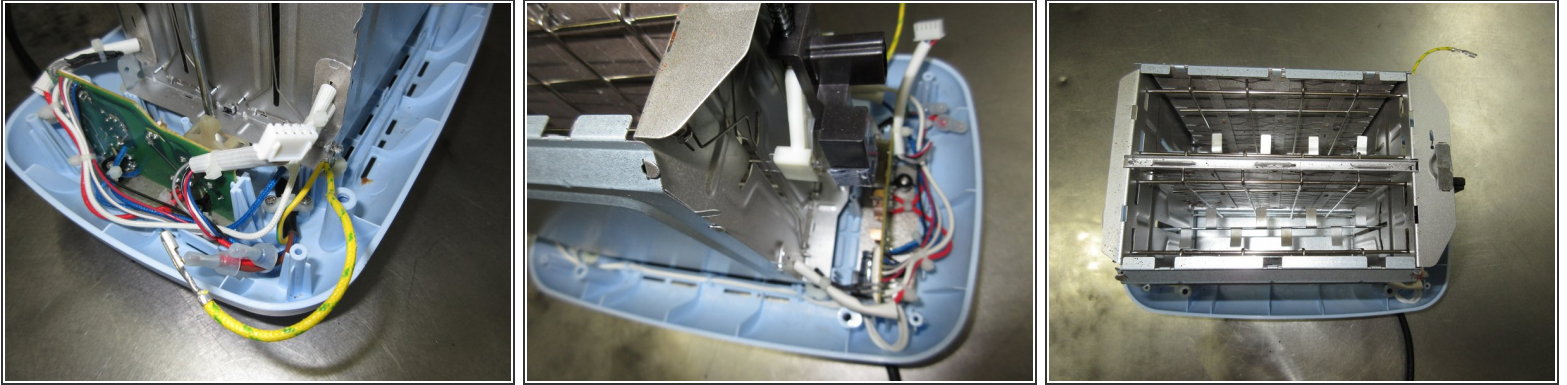
## Step 6



- The connector from the main platine to the switch platine.

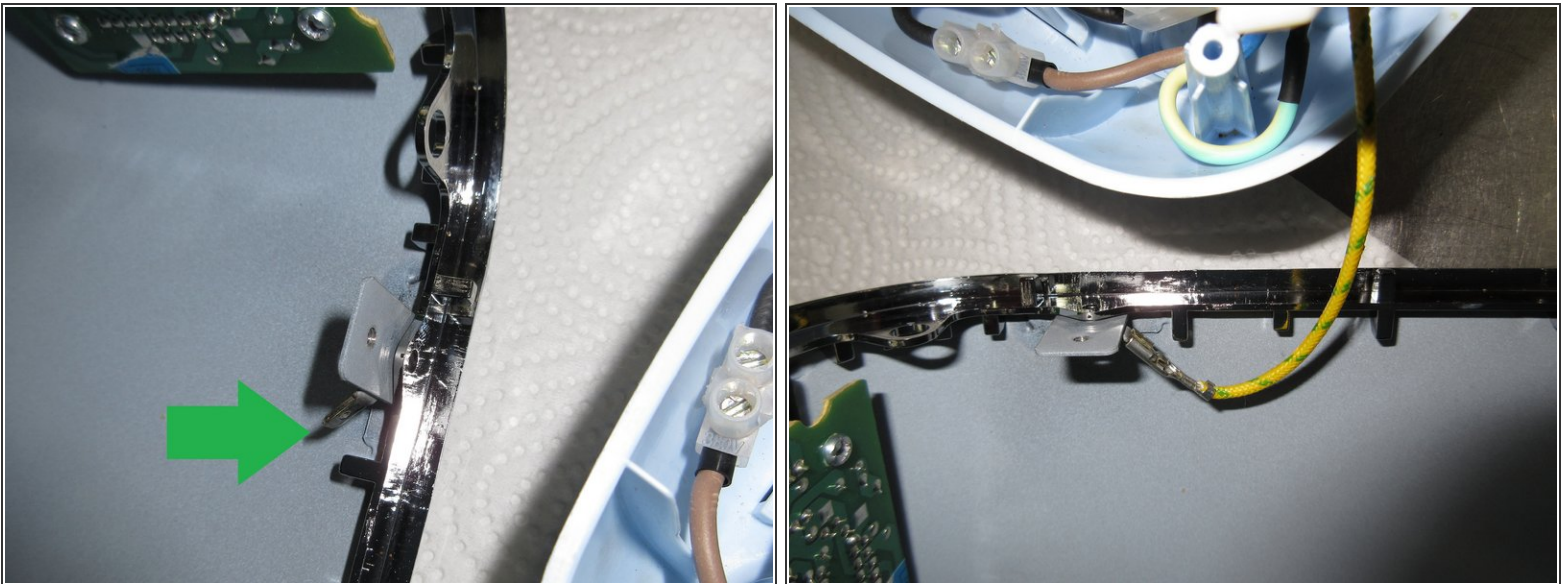


## Step 7



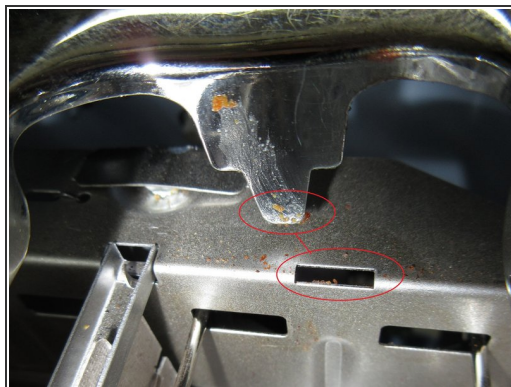
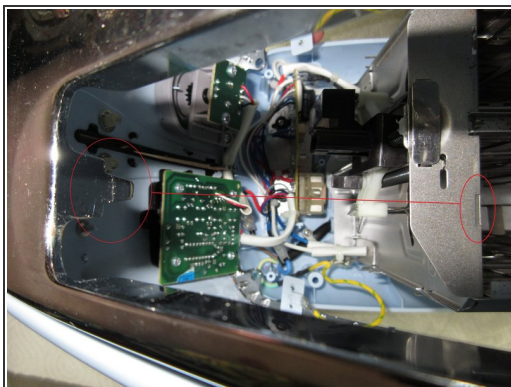
- Details of the plug and the bottom part after disassembly.
- Where to find the plug for the yellow ground wire i show you in the next step. :)

## Step 8



- here you can see where the yellow cable belongs to.

## Step 9 — Reassembly



- Reassembly: Putt all cables at the right places, don't forget the yellow cable at the housing !!!
- Look at the picture how to fit in the metal notch in the right place !

## Step 10



- Here the notch is in the right place.
- Do NOT forget to make an insulation test. Check the wiring with a multimeter.
- Made in China.
- Hope it was fun and may the pictures help you. Greetings. :)

To reassemble your device, follow these instructions in reverse order.