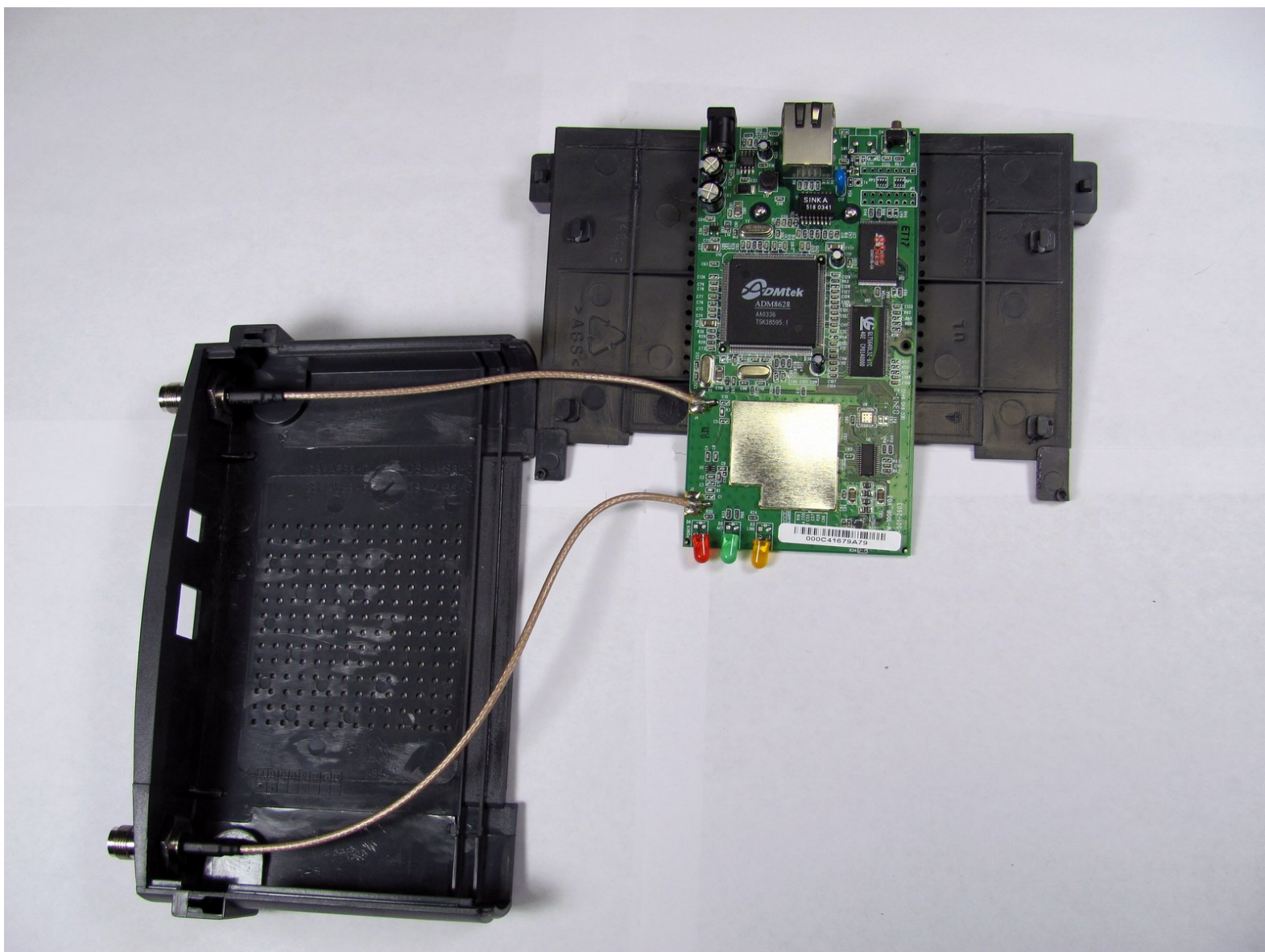




# Linksys WAP 11 Outer Case Replacement

How to open the Linksys WAP 11 device.

Written By: Joe M



---

## INTRODUCTION

Accessing and repairing the internal components of the Linksys WAP 11 requires the device to be opened. This will void your warranty.

---



### TOOLS:

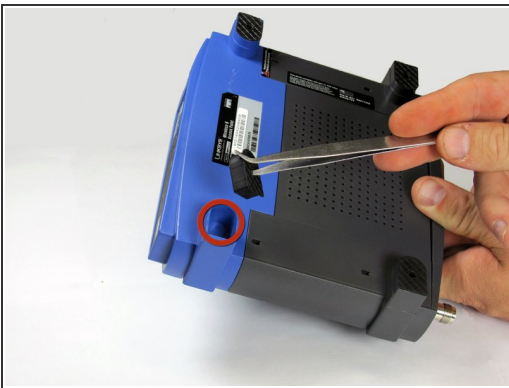
- [Phillips #1 Screwdriver](#) (1)
  - [Tweezers](#) (1)
-

## Step 1 — Outer Case



- Be sure the ethernet and power cables are disconnected from the device.
- You should also unscrew the external plastic antennas. There is one antenna on each side of the device.

## Step 2

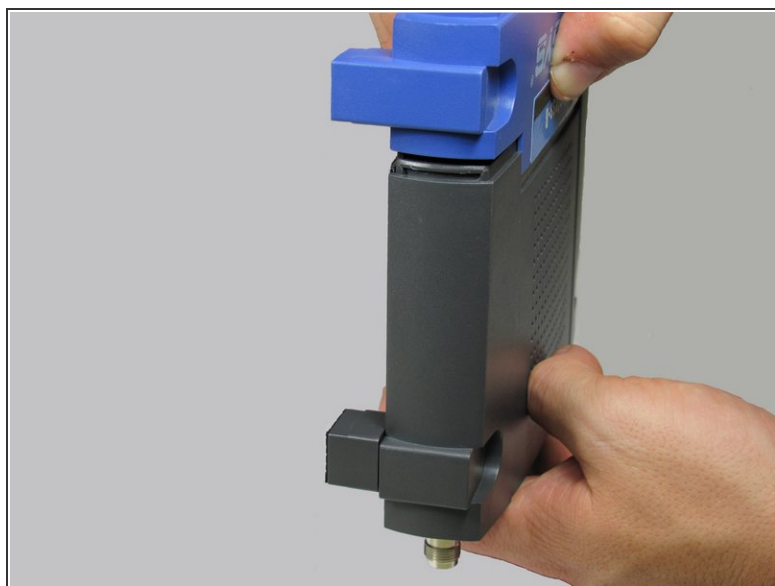


**i** To open the Linksys WAP11, you will need a Phillips #1 screwdriver and a pair of metal tweezers.

- Use the tweezers to remove the two rubber boots on the front two legs. The easiest way to do this is to insert the tweezers into the hole in the face of the boot. Once you are hooked behind the boot, pull outwards.
- This will reveal two small Phillips-head screws. Remove them.

**i** Keep these two screws together.

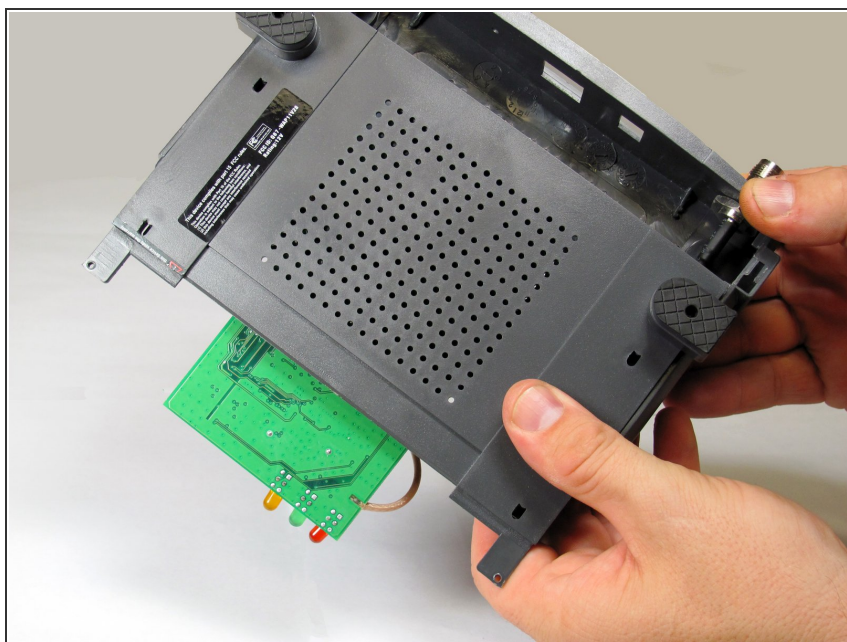
## Step 3



- Using two hands (one on the front of the device and the other on the back) apply pressure to the top and bottom seal while pulling the front and back away from each other.
- ⓘ This requires significant amount of force.
- The seal is located where the blue plastic meets the black plastic. This is where you will apply pressure.



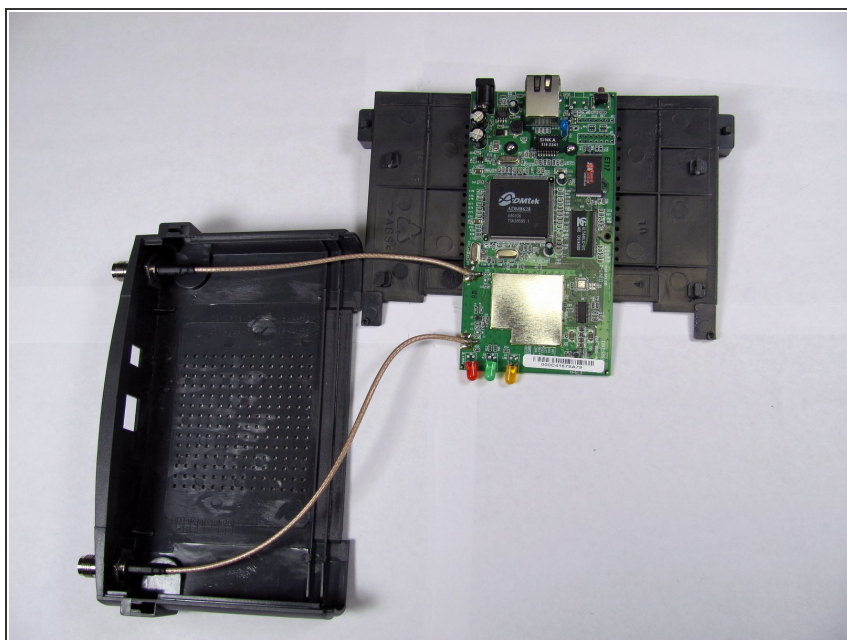
## Step 4



- After the face of the device has been removed, slide the base of the device off to reveal the motherboard and other internal components.

⚠ When removing the base, do not damage the wires that are attached to the device.

## Step 5



- This is what the device looks like when it is fully opened.

To reassemble your device, follow these instructions in reverse order.