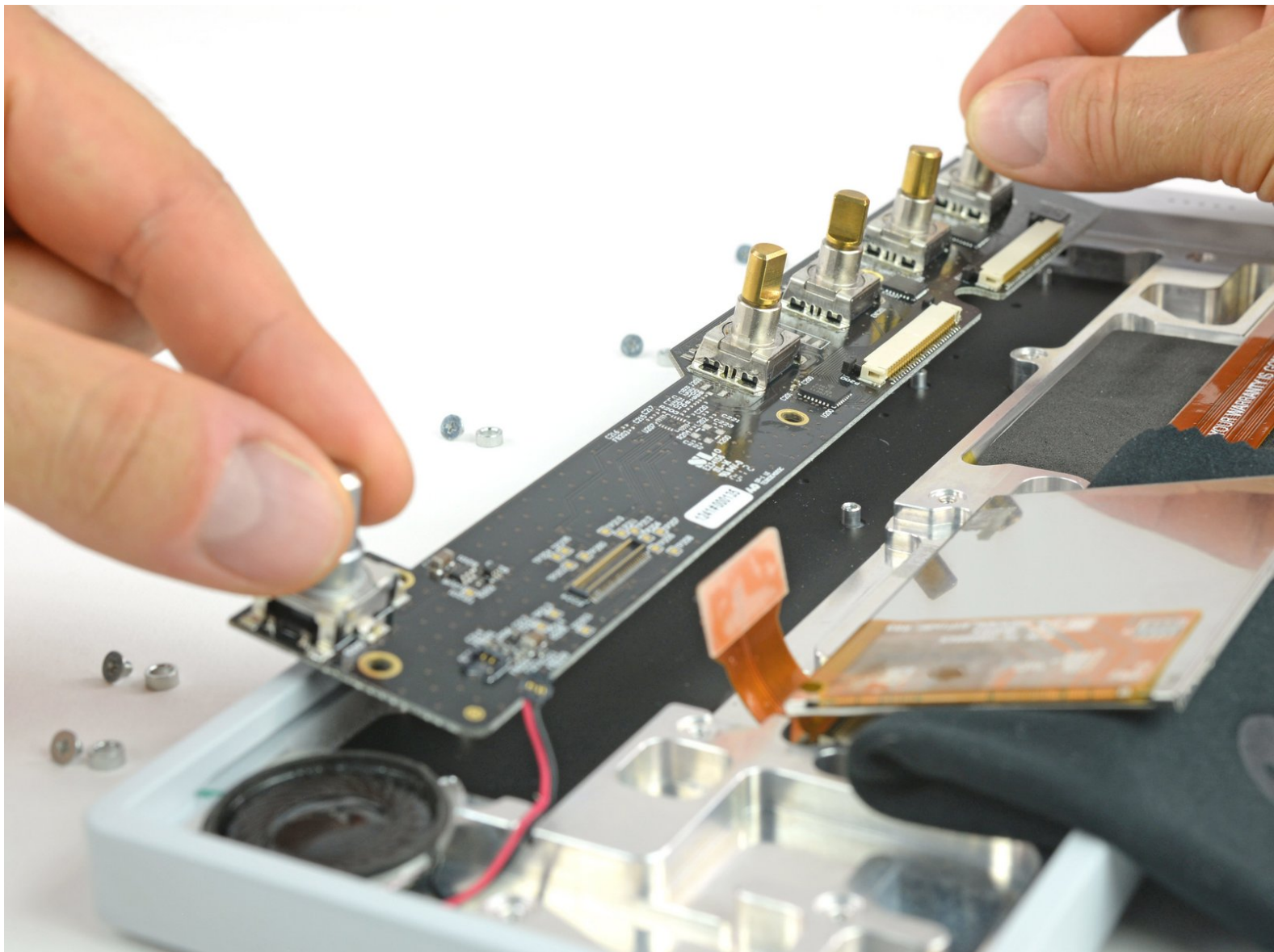




Teenage Engineering OP-1 UI Board Replacement

The UI board is responsible for the knobs and k...

Written By: Tobias Isakeit



INTRODUCTION

The UI board is responsible for the knobs and keyboard action and connects to the speaker. If it fails there will be no fun at all.

This guide will show you how to replace the UI board of your OP-1.



TOOLS:

- [iFixit Opening Tool](#) (1)
- [Phillips #00 Screwdriver](#) (1)
- [Spudger](#) (1)



PARTS:

- [OP-1 UI Board](#) (1)

Step 1 — key removal



i To get to the screws beneath the keyboard you need to take some keys off. You can use either an opening tool or an opening pick. The first picture shows how it should look like with all the necessary keys off (12 in total).

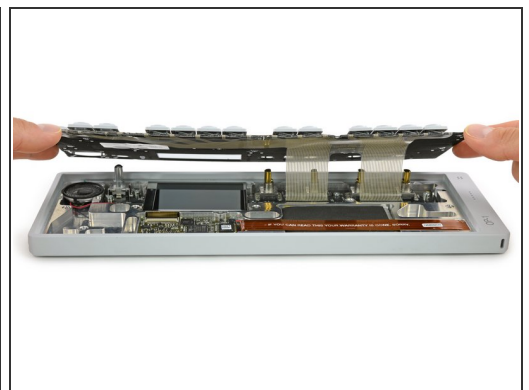
- The four longer keys from the fingerboard are to be handled from the left side to get them off.
- The eight smaller keys need to be levered from the bottom up.

Step 2 — removing scissors mechanisms



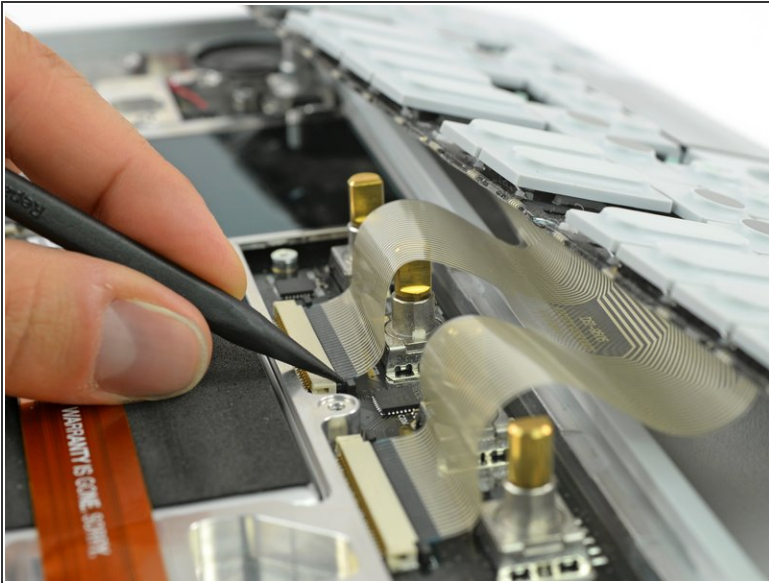
- The scissor mechanism of the eight small keys are obstructing the underlying screws.
- By using again an opening tool or opening pick these can be snapped off easily.
- ❗ When reassembling be sure to place them in with the correct side facing upwards.

Step 3 — unscrew keyboard



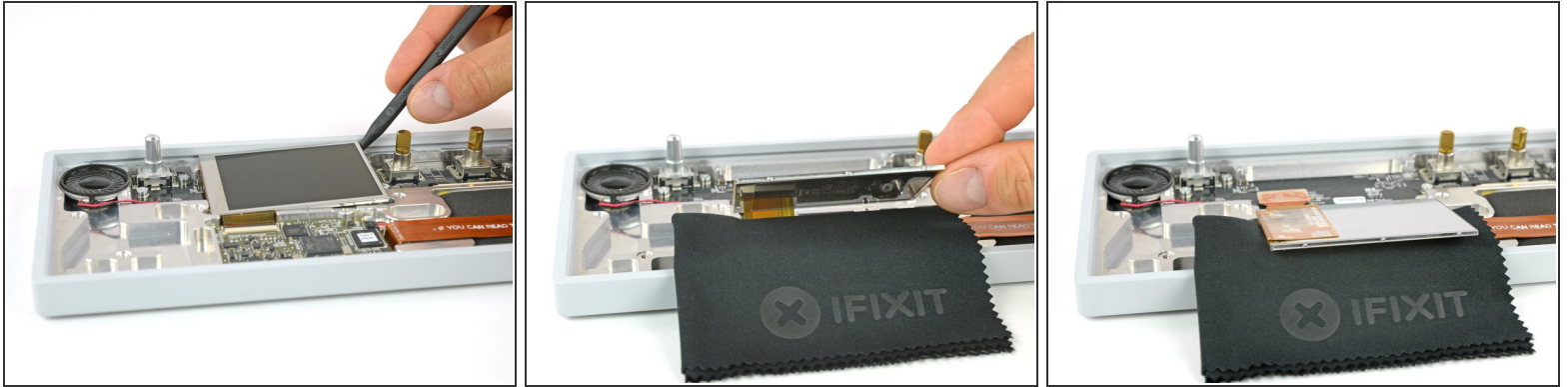
- Loosen those 12 screws with a Phillips #00 screwdriver.
- Then just pull off the four rotary knobs and the volume knob.
- Now it is possible to slightly lift the keyboard and set it back.

Step 4 — Keyboard Connection



- Unlock the flex cables by pushing the two black nibs on both sides of each connector.
 - Now you can pull the flex cables out and remove the keyboard completely.
- ✦ When installing the new keyboard, make sure to remove the protective film underneath the screen.
- i** The OP-1 has a mode to test specific functions. You can enter it by holding the "COM" button while powering on, then choose the function test (2). You don't have to complete every test and can power off after the keyboard test.

Step 5 — UI Board

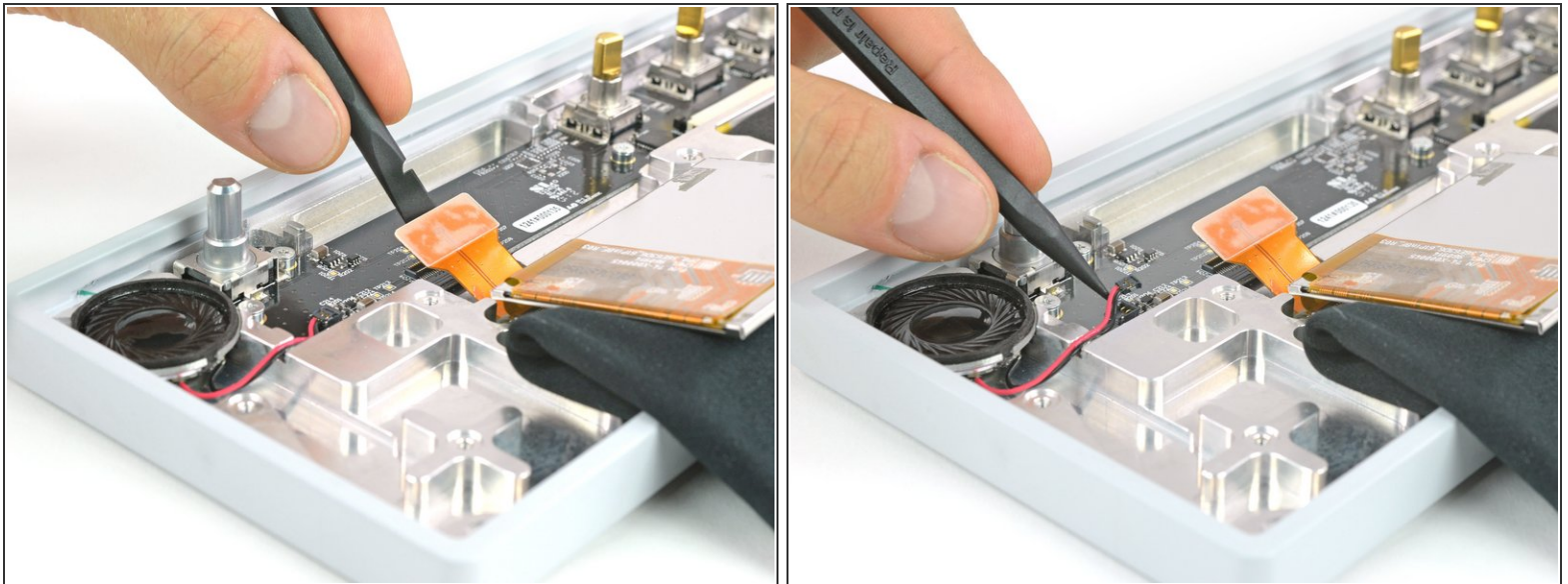


- The display is held in place with a mild adhesive. A spudger helps you to get it free.

⚠ Be careful since the flex cable is still connected.

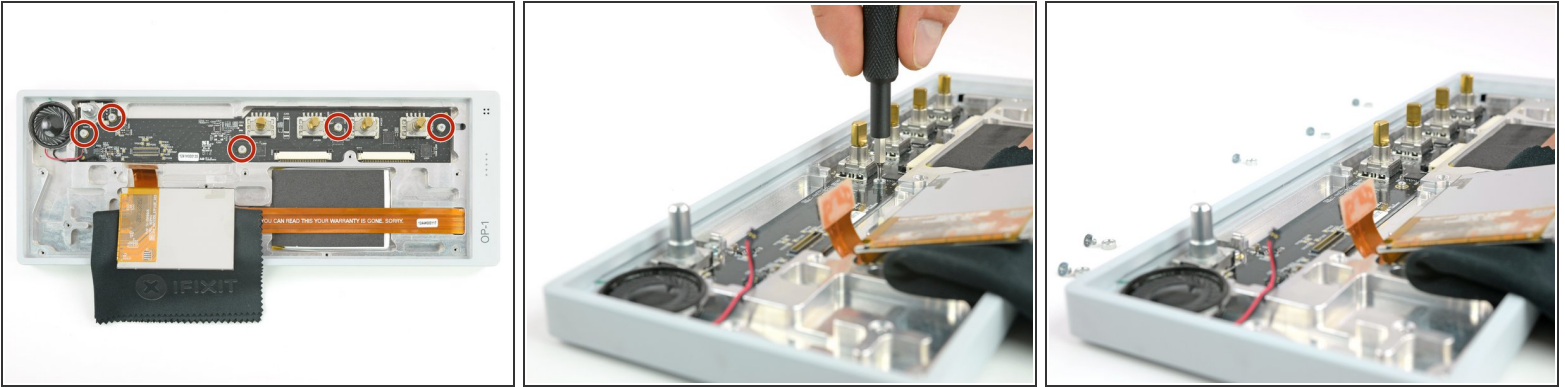
- Make sure the display won't be damaged when you flip it over to the front to access the UI board.

Step 6



- Unplug the DSP flex cable from the UI board.
- Unplug the speaker cable from the UI board.

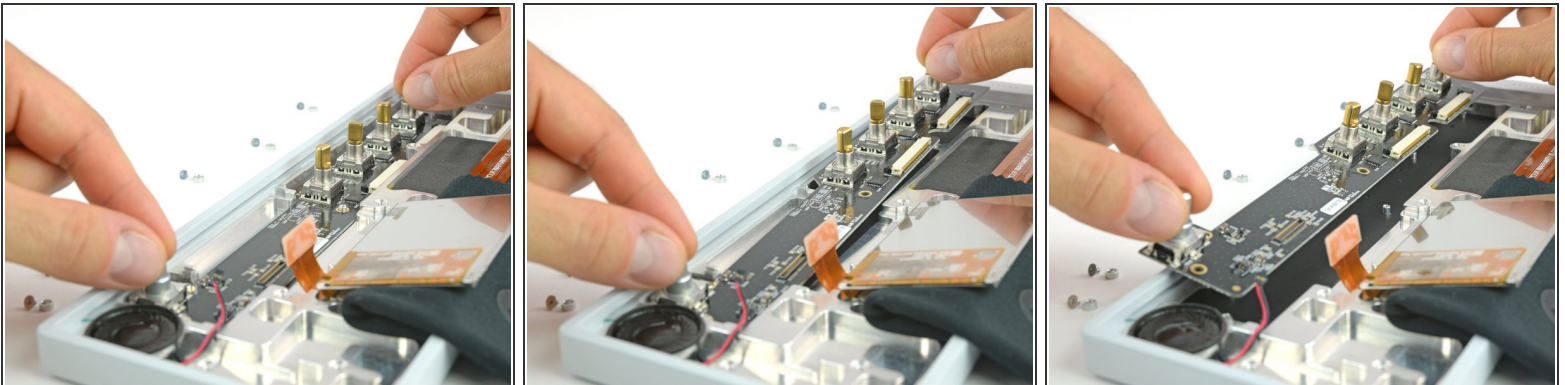
Step 7



- Use a Phillips #00 screwdriver to remove the five screws on the UI board.

⚠ To each screw there is a thick washer to fix the board. Don't loose them.

Step 8



- Now the UI board is free to take out. You can grab it by the knobs and start lifting it on the right side half way out.
- On the left side the speaker and its cable might be in the way to get it out straight. Just move it diagonally to the right to get it out completely.
- ✦ Make sure the black plastic mat underneath the UI board stays inside.
- ⓘ After reassembling you want to check the board with the internal test function. You can enter it by holding the "COM" button while powering on, then choose the function test (0).

To reassemble your device, follow these instructions in reverse order.