



iPad mini 4 Wi-Fi Battery Replacement

Follow the steps in this guide to replace an...

Written By: Evan Noronha



INTRODUCTION

Follow the steps in this guide to replace an aging battery in an iPad mini 4 Wi-Fi.

If your battery is swollen, [take appropriate precautions](#).

TOOLS:

[Plastic Cards](#) (1)
[iFixit Opening Picks \(Set of 6\)](#) (1)
[Suction Handle](#) (1)
[iOpener](#) (1)
[Phillips #00 Screwdriver](#) (1)
[Spudger](#) (1)

PARTS:

[iPad mini 4 Battery](#) (1)

Step 1 — Opening Procedure



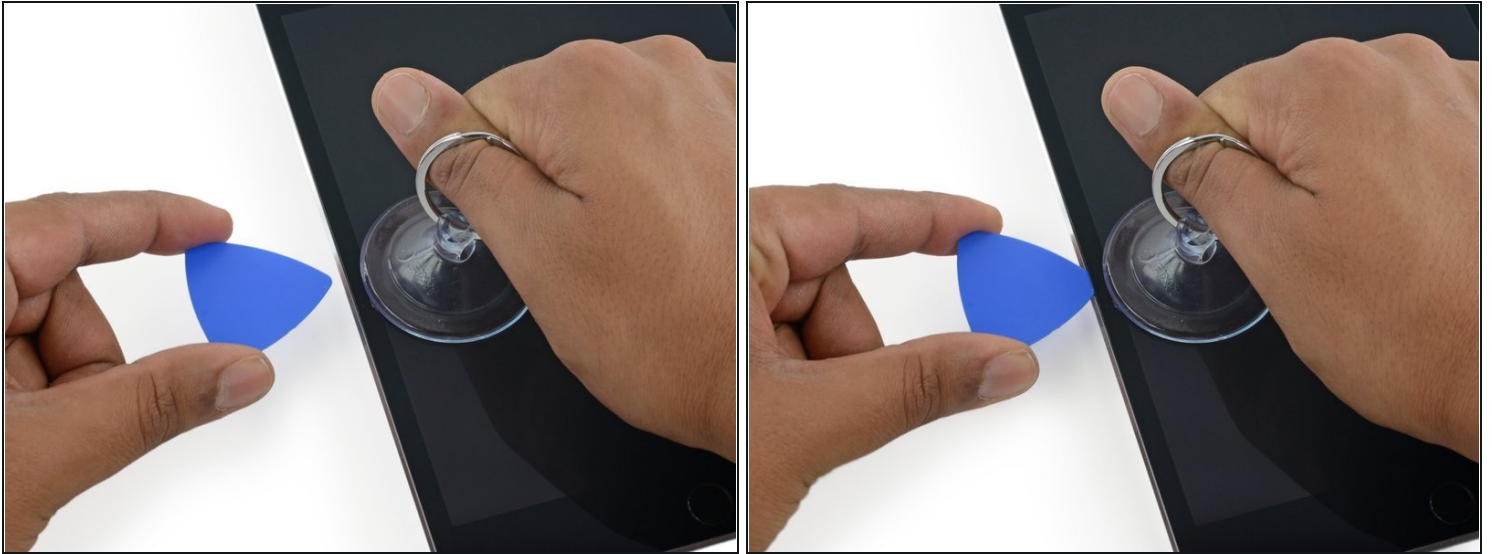
- [Heat an iOpener](#) and apply it to the left edge for two minutes.

Step 2



- Apply a suction cup halfway up the heated side.
 - Be sure the cup is completely flat on the screen to get a tight seal.
 - While holding the iPad down with one hand, pull up on the suction cup with strong, steady force to create a gap.
 - ① Depending on the age of your device, this may be difficult. If you have trouble, apply more heat and try again.
- ⚠ Be careful to only lift the glass enough to insert an opening pick—any more and you risk cracking the glass.

Step 3



- While holding the glass up with the suction cup, insert the point of an opening pick into the gap between the glass and body of the iPad.

⚠ Don't insert the opening pick any deeper than 2 mm into the side of the display. Inserting the pick deeper than 2 mm could damage the backlight assembly, LCD display, or touchscreen.

Step 4



- Reheat and reapply the iOpener to the left edge for a few minutes.
- ⚠ Be careful not to overheat the iOpener during the repair procedure. Always wait at least ten minutes before reheating the iOpener.

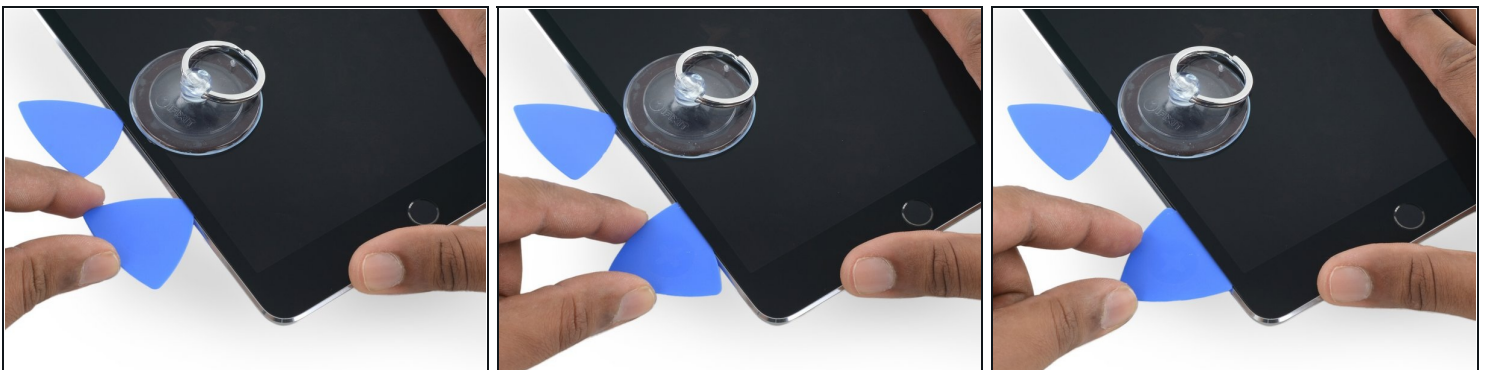
Step 5



- Insert a second opening pick alongside the first and slide the pick down along the edge of the iPad, releasing the adhesive as you go.

⚠ Throughout the rest of the procedure, if you encounter significant resistance while sliding the pick, stop and reheat the section you're working on. Applying too much pressure with the pick can crack the glass.

Step 6



- Continue moving the opening pick down the side of the display to release the adhesive.
- If the opening pick gets stuck in the adhesive, "roll" the pick along the side of the iPad, continuing to release the adhesive.

Step 7



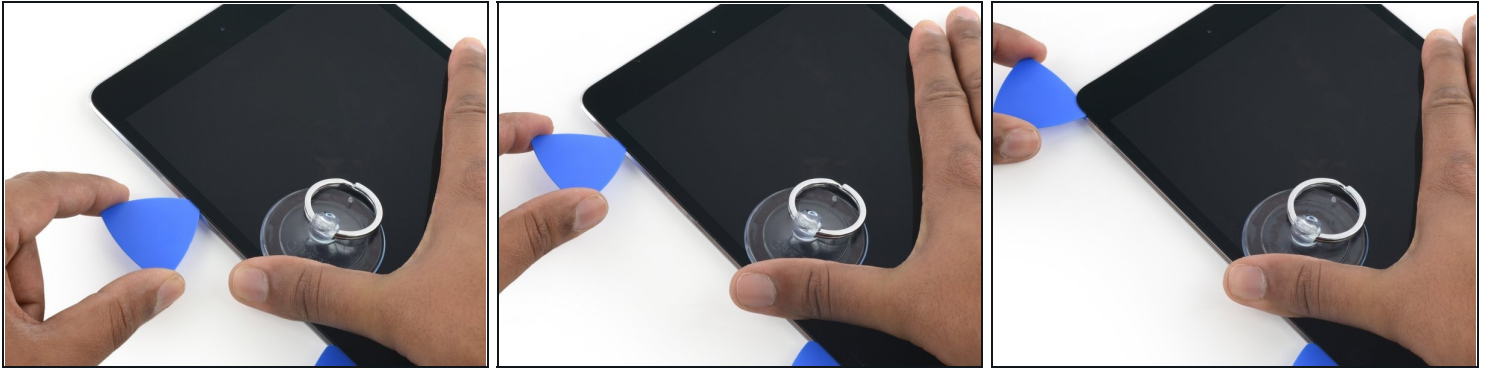
- Take the first pick you inserted and slide it up toward the top corner of the iPad.

Step 8



- Reheat the iOpener and place it on the top edge of the iPad, over the front-facing camera.
⚠ Be careful not to overheat the iOpener during the repair procedure. Wait at least ten minutes before reheating the iOpener.
- If you have a flexible iOpener, you can bend it to heat both the upper left corner and the upper edge at the same time.

Step 9



- Slide the opening pick around the top left corner of the iPad to separate the adhesive.

Step 10



- Slide the opening pick along the top edge of the iPad, stopping just before you reach the camera.
- As you reach the front-facing camera, pull the pick out slightly and continue sliding it across the top edge.

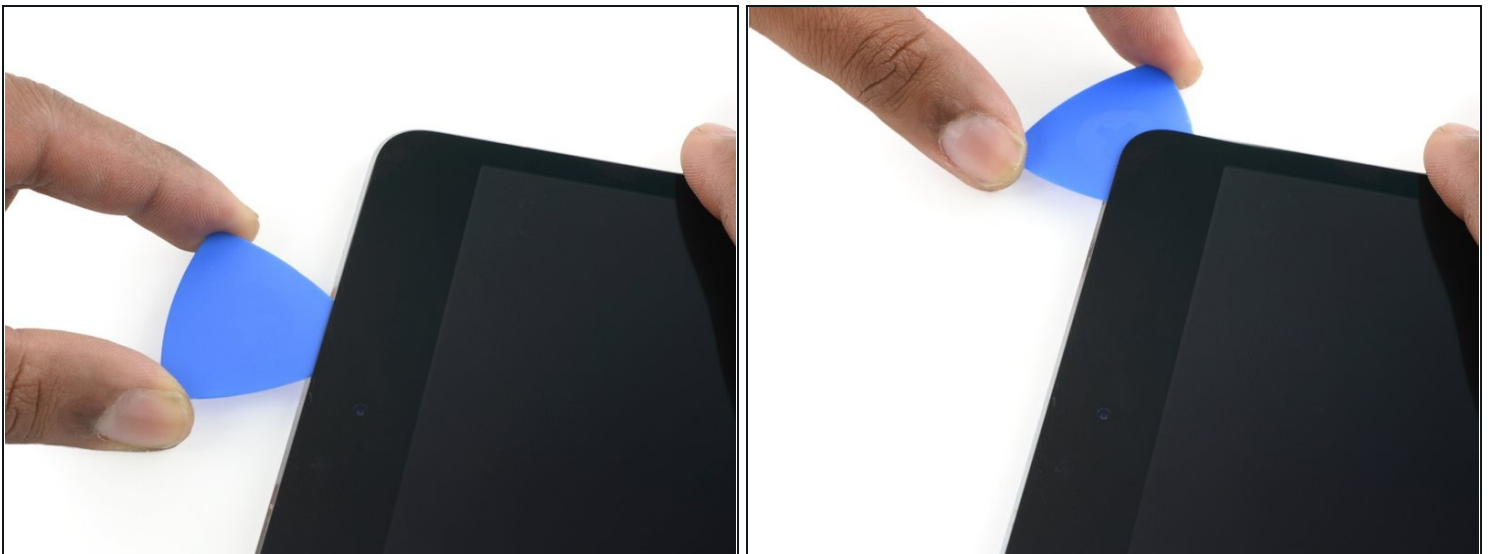
⚠️ Avoid sliding the opening pick over the front-facing camera, as you may smear adhesive onto the lens or damage the camera. The following steps will detail how to best avoid disturbing the front-facing camera.

Step 11



- Leave the opening pick in the iPad slightly past the front-facing camera.
- Take a second pick and insert it to the left of the camera, where the first pick just was. Slide it back to the corner to completely cut any remaining adhesive.
- Leave the second pick in place to prevent the corner adhesive from re-sealing as it cools.

Step 12



- Insert the previous pick deeper into the iPad and slide it away from the camera toward the corner.

Step 13



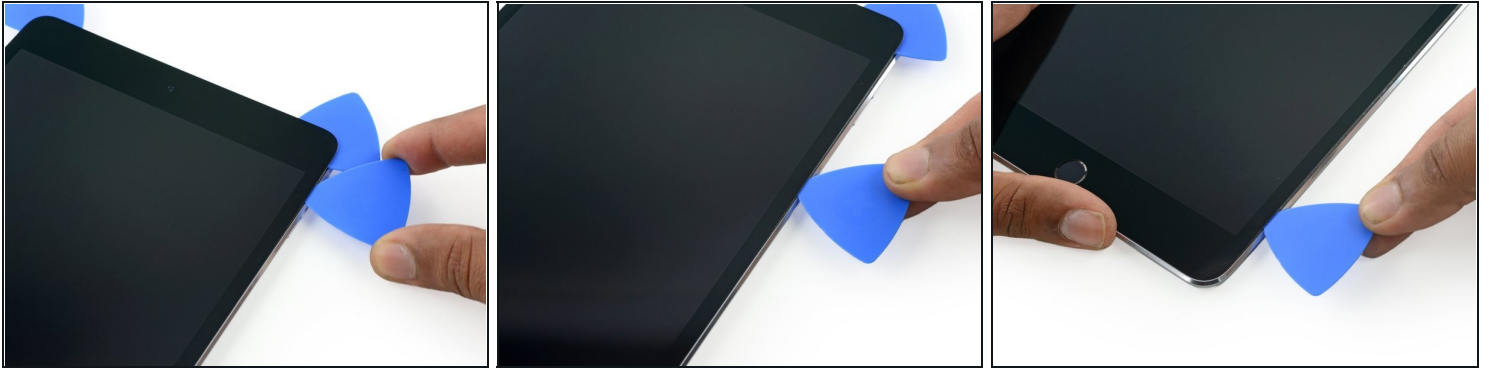
- Leave the three picks in the corners of the iPad to prevent re-adhering of the front panel adhesive.
- Reheat the iOpener and place it on the remaining long side of the iPad—along the volume and lock buttons.

Step 14



- Insert a new opening pick and slide it down the right edge of the iPad, releasing the adhesive as you go.

Step 15



- Continue sliding the opening pick down the right edge of the iPad, reheating the edge using an iOpener if necessary.

⚠ Be careful not to slice too deep near the bottom right corner, or you risk damaging the display cable.

Step 16



- Leave the opening picks in place and reheat the iOpener.
⚠ Remember not to overheat the iOpener—no more than once every ten minutes.
- Set the reheated iOpener on the home button end of the iPad and let it rest for a few minutes to soften the adhesive beneath the glass.

Step 17



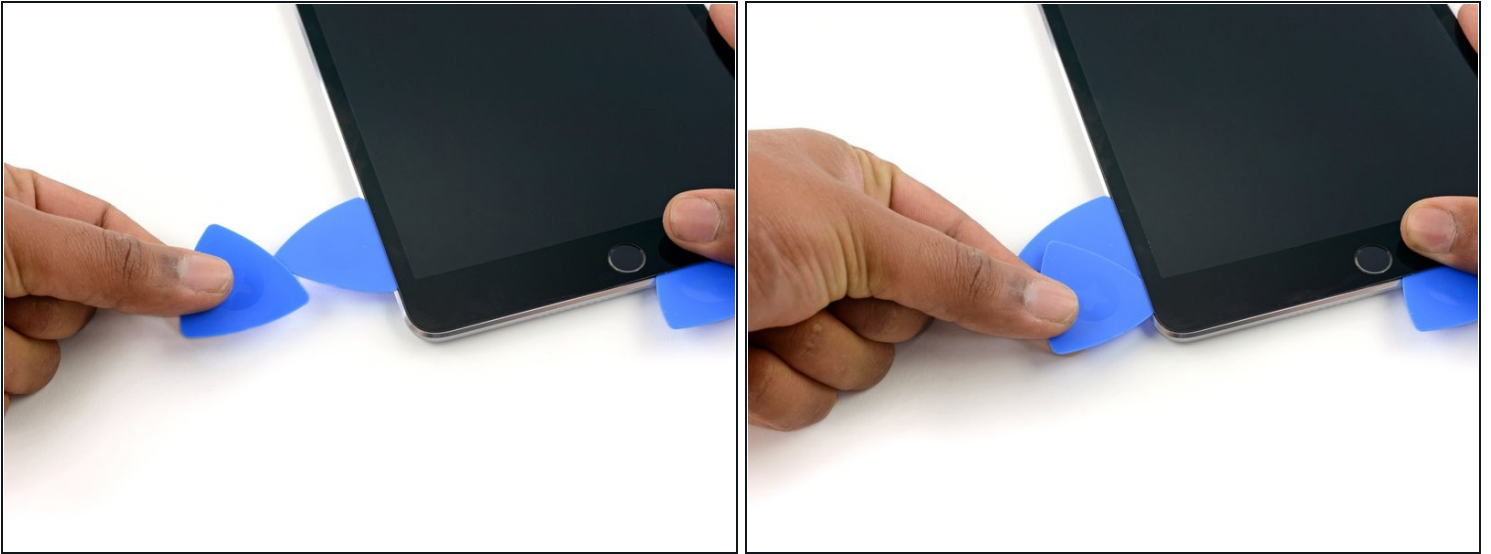
- Insert a new opening pick at the bottom right corner of the display, below the last opening pick you used to slice down the right edge.
- Rotate the new pick around the lower right corner of the device.

Step 18



- Slide the pick from the bottom right corner along the lower edge of the device. Stop about half an inch shy of the home button.

Step 19



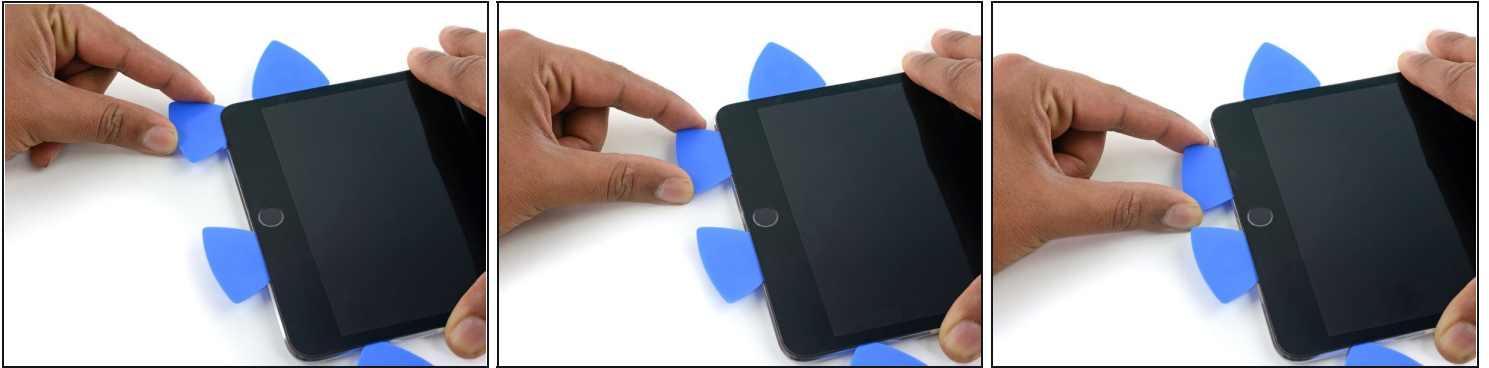
- Insert a final opening pick at the lower left corner of the iPad, directly below the existing one.

Step 20



- Slide the pick around the lower left edge of the iPad.

Step 21



- Continue sliding the pick at the lower left edge of the display toward the center of the iPad, until it is roughly half an inch from the home button.

Step 22



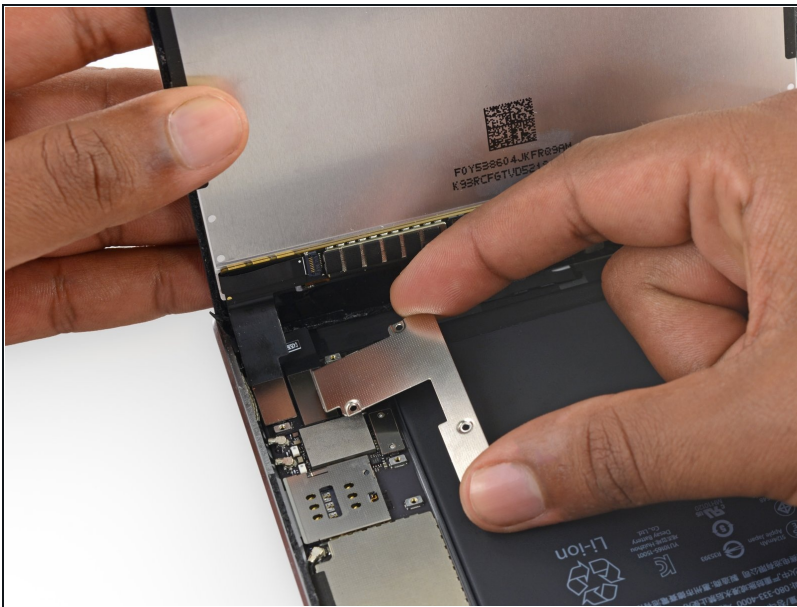
- Twist the two picks at the top edge of the iPad to break up the last of the adhesive holding the display assembly in place.
- Lift the display from the top edge to open the device.

Step 23 — Battery Connector



- i** To avoid stressing any cables, hold the display assembly perpendicular to the body of the iPad until it is disconnected.
- Remove the four 1.2 mm Phillips screws over the battery/display connector bracket.

Step 24



- Remove the battery/display cable bracket.

Step 25



⚠ When disconnecting any press connectors from the logic board, be sure to lift the connector straight up to avoid ripping the socket off the board.

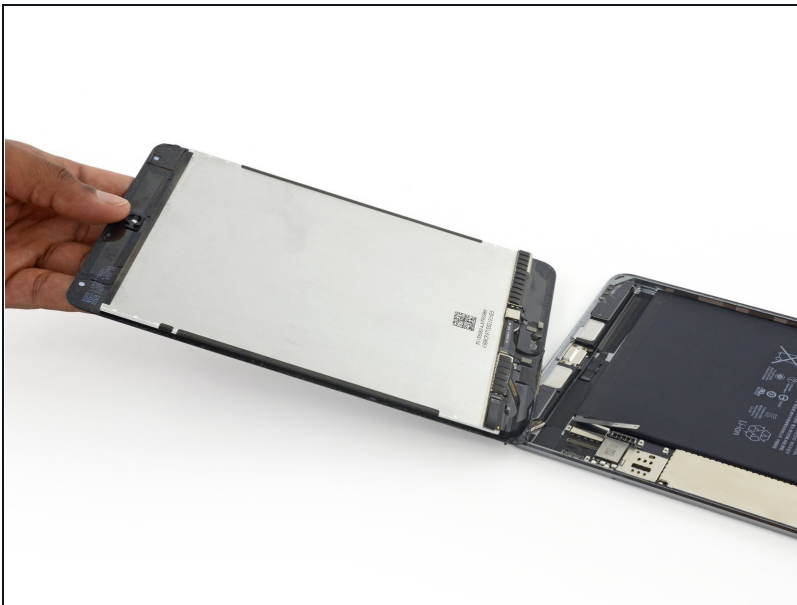
- Use the flat tip of a spudger to disconnect the battery connector from its socket on the logic board.
- ① Bend the battery connector ribbon cable up slightly to prevent it from making contact and powering on the iPad.

Step 26 — Display Assembly



- Use the pointed end of a spudger to disconnect the display data connector from its socket on the logic board.
- Use the pointed end of a spudger to disconnect the digitizer cable connector from its socket on the logic board.
- ☑ When reconnecting these, press down from one end of the connector to the other. If you press in the middle of the connector, you may bend it, causing damage or a poor connection.

Step 27



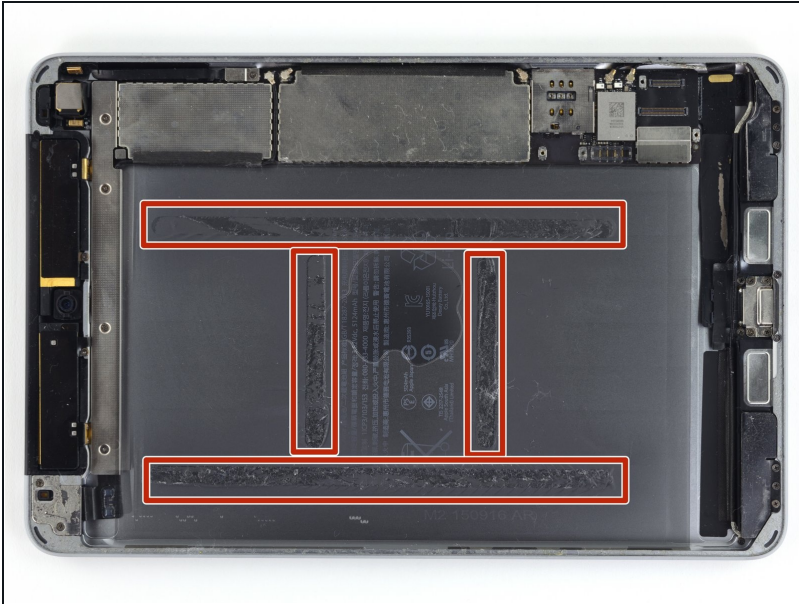
- Remove the display assembly.
- ☑ To reinstall your display assembly, you will need to replace the display adhesive. Use our [display adhesive application guide](#) to reapply your display adhesive and reseal your device.

Step 28 — Battery



- Reheat your iOpener.
- Lay the iPad face down on your work surface and place the iOpener on the rear case, where the lower edge of the battery is.
- ⓘ Wait about two minutes before moving on to the next step to ensure the adhesive holding the battery to the rear case is adequately softened.

Step 29



- In the following steps you will be cutting the adhesive under the battery, and prying it off of the rear case.
- The adhesive is laid out as shown in this image: two strips along the long edges, and two shorter strips perpendicular in the center.
- To avoid damaging the battery, use plastic tools, heat, and patience. Do not puncture, bend, or overheat the battery.
- Do not pry near the logic board, you could damage your iPad.
- ⓘ If you are performing this procedure on the Wi-Fi version, it is safe to insert pry tools from the upper, lower, and left edges of the battery. For the LTE version, only pry from the lower and left edges to avoid damaging other components.

Step 30



- Insert the corner of a [plastic card](#) between the lower end of the battery and the rear case.
- Press the card until approximately an inch and a half is underneath the battery.

Step 31



- Insert a second plastic card between the battery and first card, this time with the card edge parallel to the battery.
- Again, press the card in until about an inch and a half is underneath the battery.

Step 32



- Insert a third plastic card between the first and second ones, this time aligned with the left edge of the battery.
- Continue to cut the adhesive under the battery until the battery is freed.
- Reheat and reapply your iOpener when prying becomes difficult. Be sure to wait for the iOpener to cool between sessions.

Step 33



- Remove the battery.
- ★ When you install a replacement battery, be sure to check that the battery connector can reach the logic board before you glue the battery in place.

To reassemble your device, follow these instructions in reverse order.