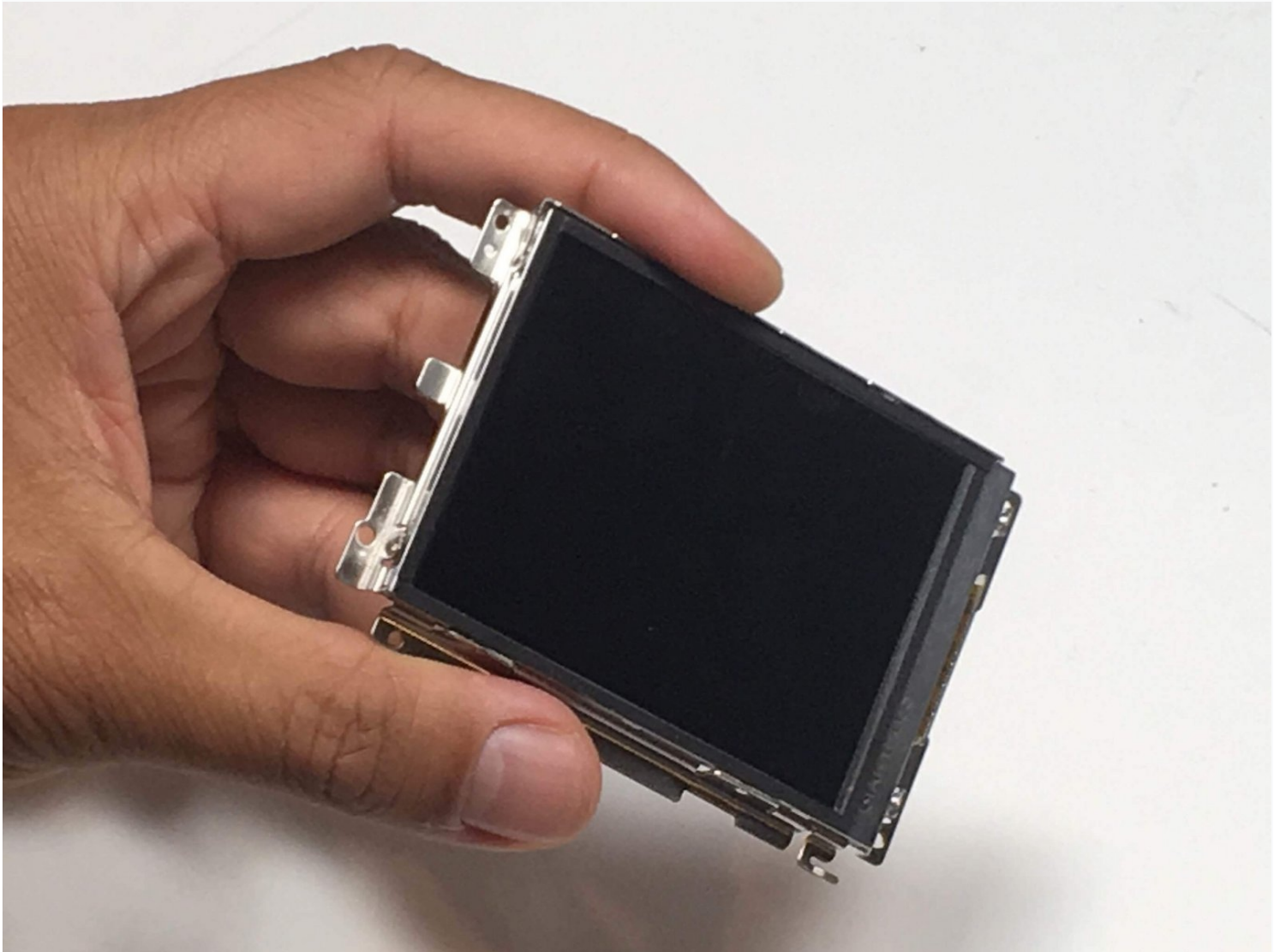




# Samsung WB1100F LCD Screen Replacement

This guide will show you how to replace the LCD...

Written By: Jesse Lindsey



# INTRODUCTION

This guide will show you how to replace the LCD Panel on the Samsung WB1100F. It will show you a step by step replacement guide of how to replace the LCD Panel.

## TOOLS:

[iFixit Opening Tool](#) (1)

[Phillips #00 Screwdriver](#) (1)

## Step 1 — LCD Screen Cover



- Remove six 1.2 mm Phillips #00 screws connected to the tripod dock and adjacent screws.
- Remove six 1.2 mm Phillips #00 screws from the side of the camera.

## Step 2



① Use a plastic opening tool or spudger if available.

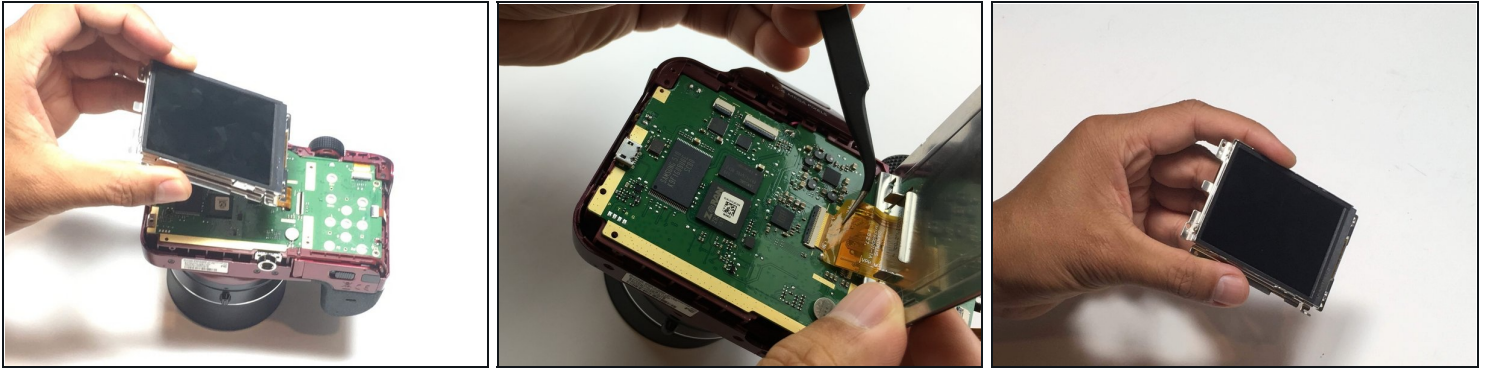
- Using the flat end of a spudger, loosen the connection between the back panel and the device. Remove the back panel using your hands.

## Step 3 — LCD Screen



- Remove four 1.2 mm Phillips #1 screws connected to the LCD screen.

## Step 4



- Flip the LCD screen over to reveal the display cable.
- Use the tip of a spudger or your fingernail to flip up the small retaining flap on the display cable ZIF connector.

⚠ Be sure you are prying up on the hinged retaining flap, not the connector itself.

- Using a pair of [tweezers](#), remove the ribbon cable from its socket on the motherboard.
- ☑ The white line on this ribbon cable marks the edge of the connection area. To reinstall, insert the cable into the connector up to this line, and then close the retaining flap. If the cable doesn't insert easily up to (or very near to) this line, it's probably misaligned and needs to be gently removed and repositioned.

---

To reassemble your device, follow these instructions in reverse order.