



MacBook Air 11" Mid 2011 Logic Board Replacement

Written By: Walter Galan



INTRODUCTION

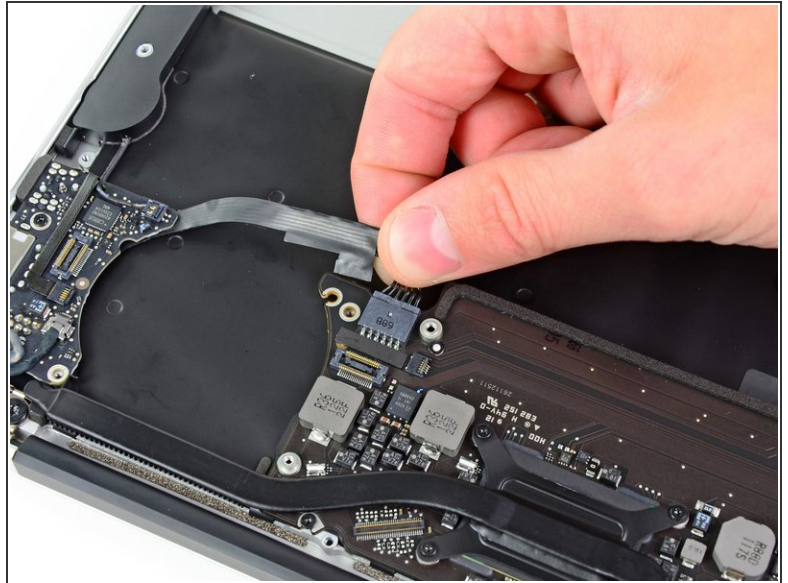
Internal prerequisite.



TOOLS:

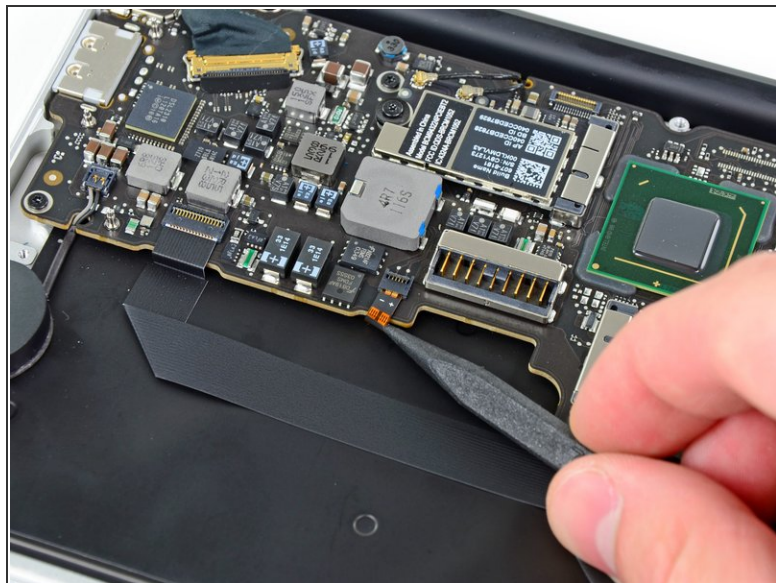
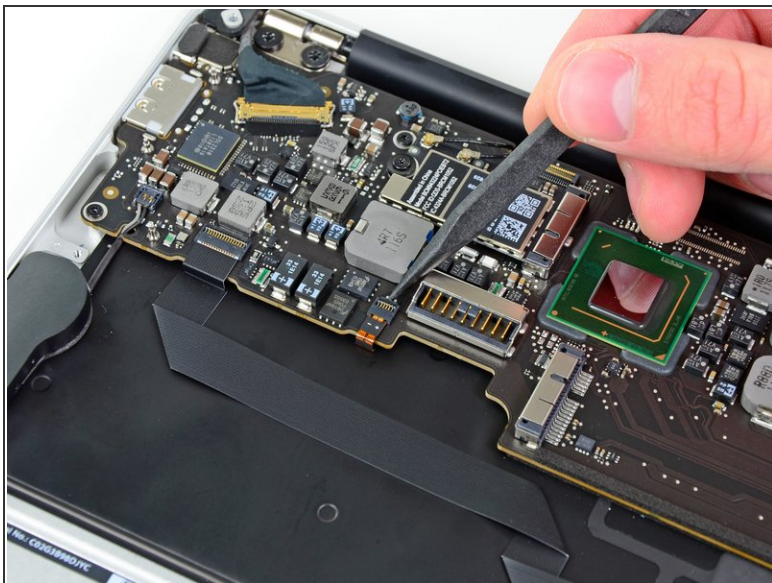
- [T5 Torx Screwdriver](#) (1)
 - [Spudger](#) (1)
-

Step 1 — Logic Board



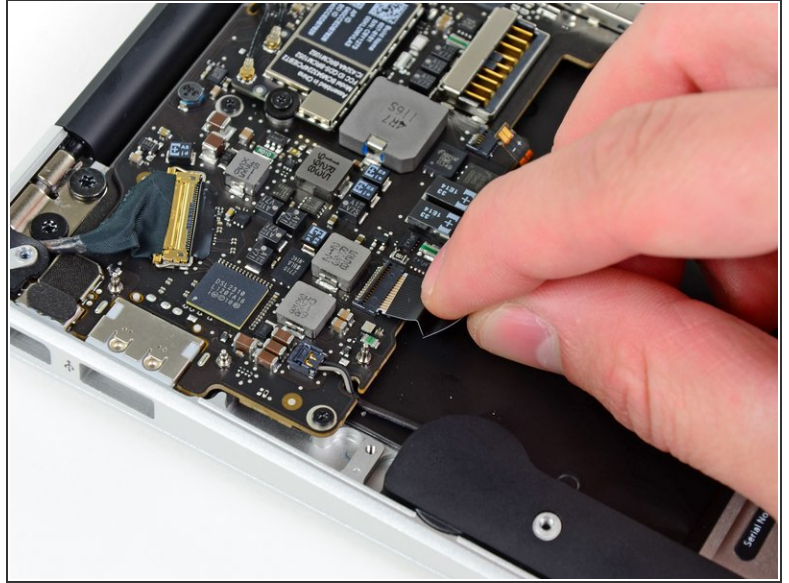
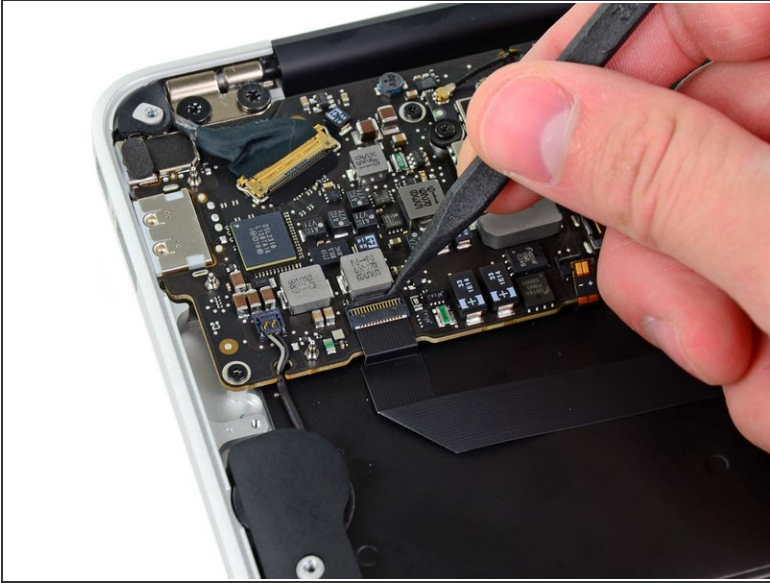
- Use the flat end of a spudger to free the adhesive loop securing the I/O board power cable to the upper case.
- Disconnect the I/O board by pulling the power cable away from its socket on the logic board.
- ⓘ Pull the cable parallel to the face of the logic board toward the front edge of the Air.

Step 2



- Use the tip of a spudger to flip up the retaining flap on the keyboard backlight ribbon cable ZIF socket.
- ⚠ Be sure you are prying up on the hinged retaining flap, **not** the socket itself.
- Pull the keyboard backlight ribbon cable out of its socket.

Step 3

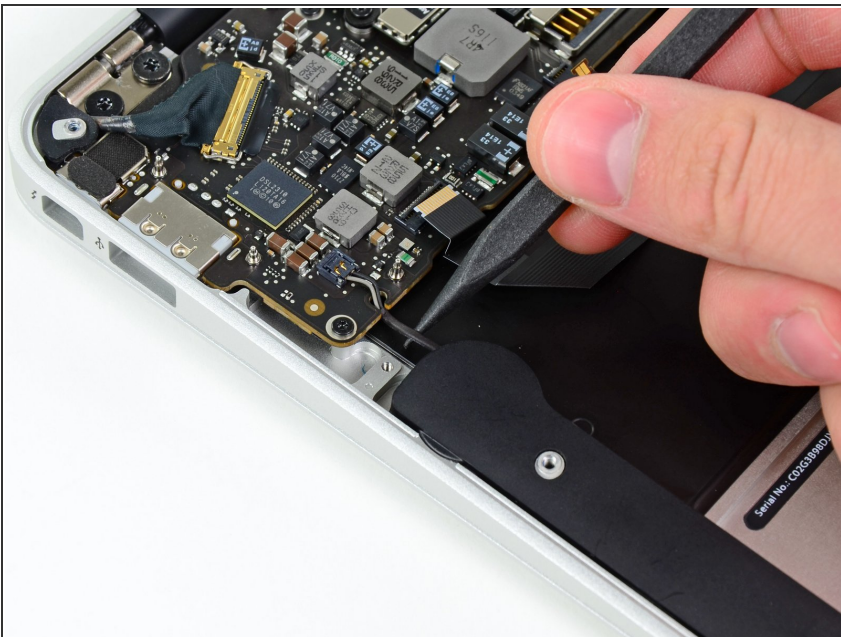


- Use the tip of a spudger or your fingernail to flip up the retaining flap on the trackpad ribbon cable ZIF socket.

⚠ Be sure you are prying up on the hinged retaining flap, **not** the socket itself.

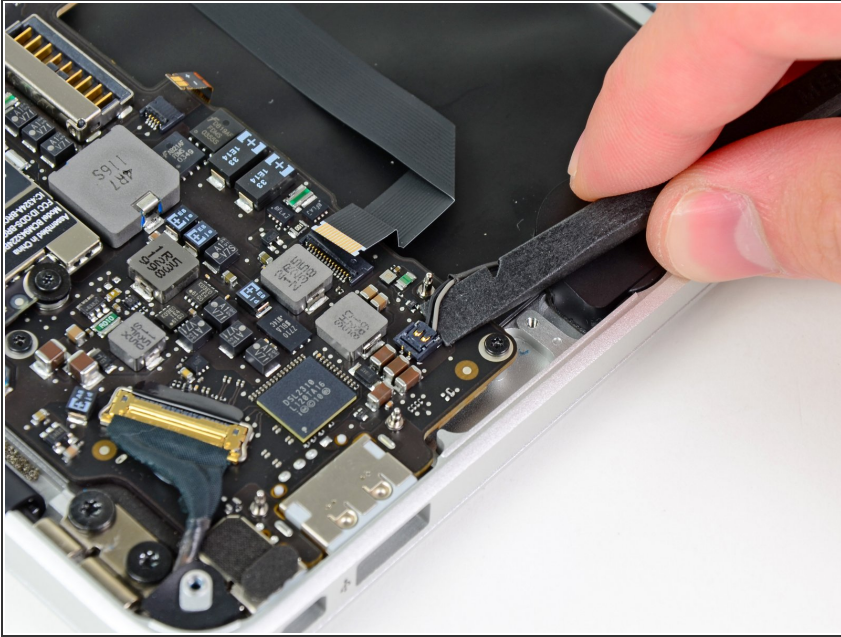
- Pull the trackpad ribbon cable straight out of its socket toward the front edge of the Air.

Step 4



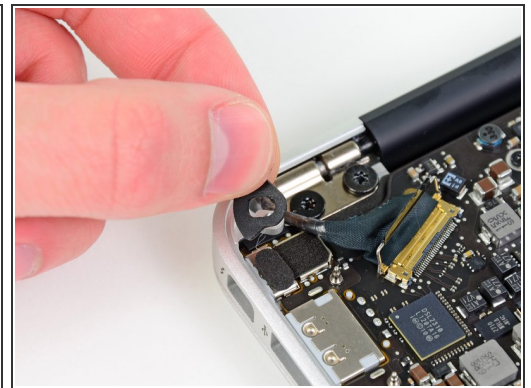
- Use the tip of a spudger to de-route the right speaker cable from the slot cut into the logic board.

Step 5



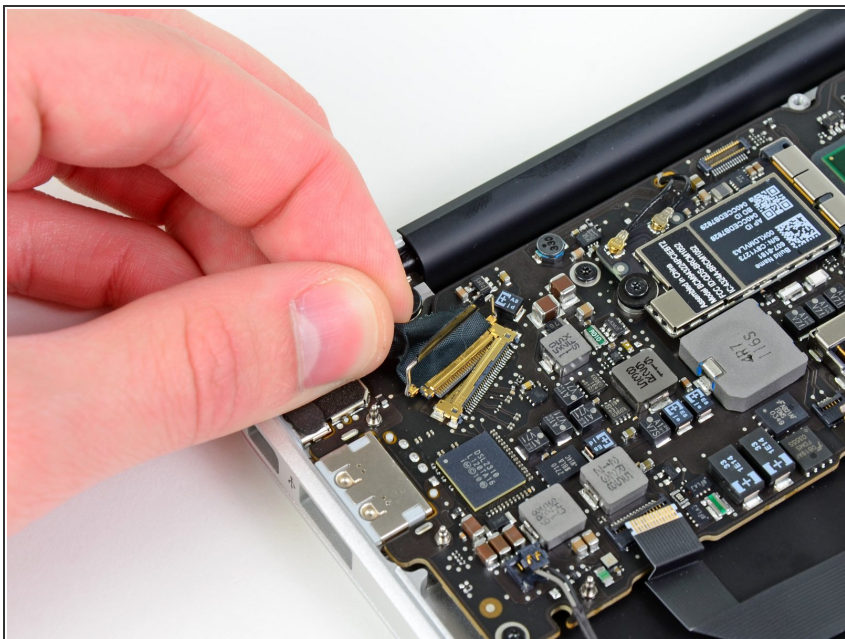
- Use the flat end of a spudger to pry the right speaker cable connector up and out of its socket on the logic board.
- ⓘ Pry up from beneath the cables.

Step 6



- Gently push the tip of a spudger under the black plastic flap stuck to the display data cable lock to make the lock pop upward and away from the socket.
- Remove the small rubber gasket from the corner of the upper case near the display data cable.

Step 7



- While holding the lock away from the socket, gently pull the display data cable out of its socket.

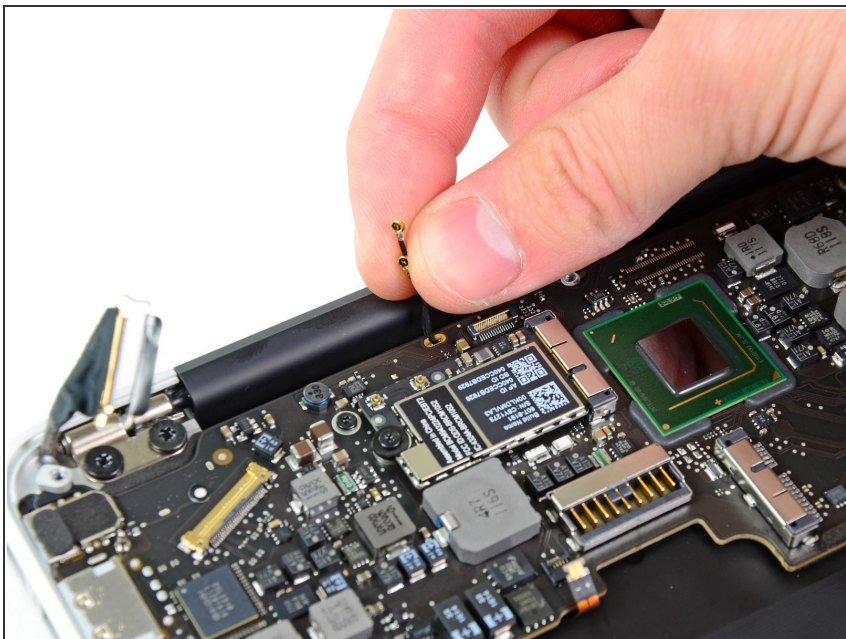
⚠ Do not pull upward on the display data cable as you disconnect it, as its socket may break off the logic board.

Step 8



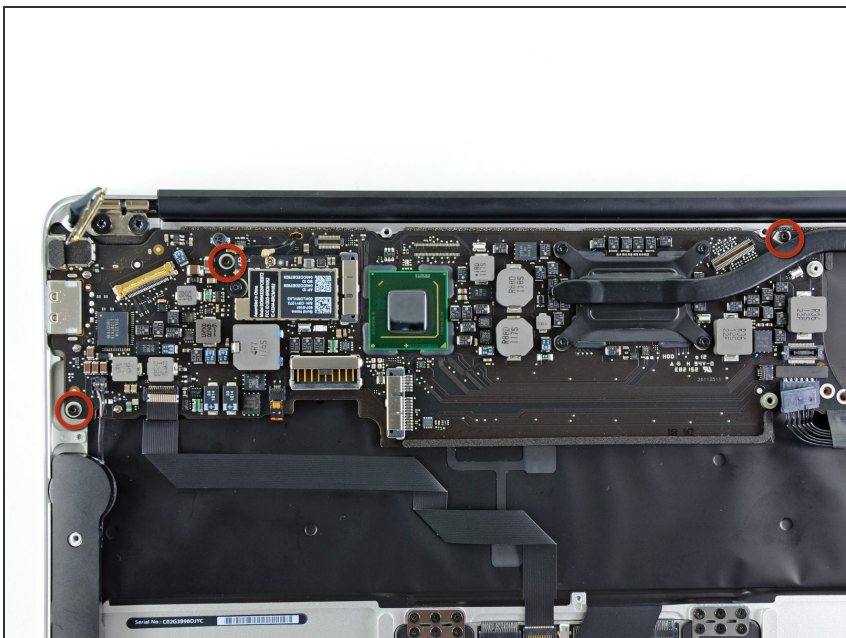
- Use the flat end of a spudger to pry both antenna cable connectors up and off their sockets on the AirPort/Bluetooth card.

Step 9



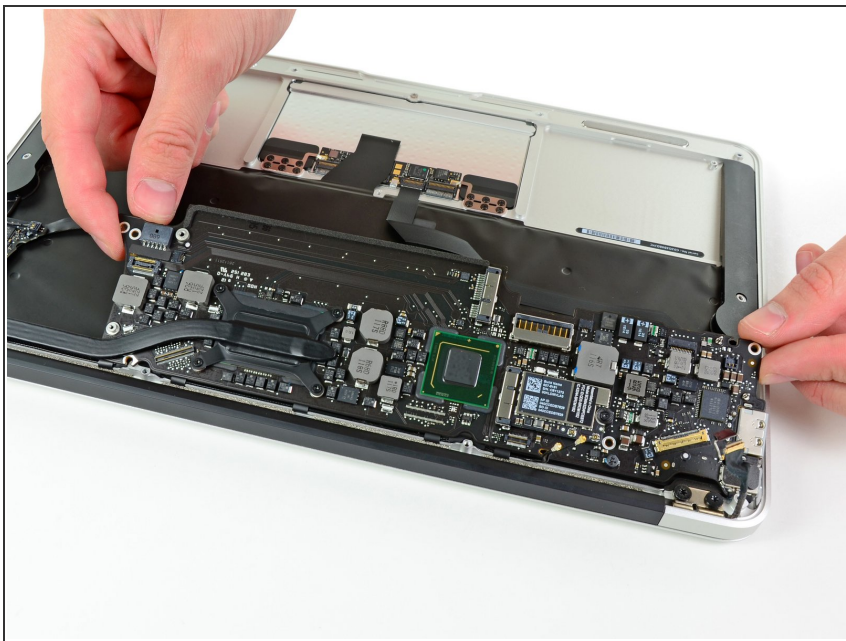
- Gently de-route the antenna cables from the slot cut into the logic board.

Step 10



- Remove the three 3.6 mm T5 Torx screws securing the logic board to the upper case.

Step 11



- Gently lift the logic board assembly out of the upper case, minding the fragile heat sink and any cables that may get caught.

To reassemble your device, follow these instructions in reverse order.