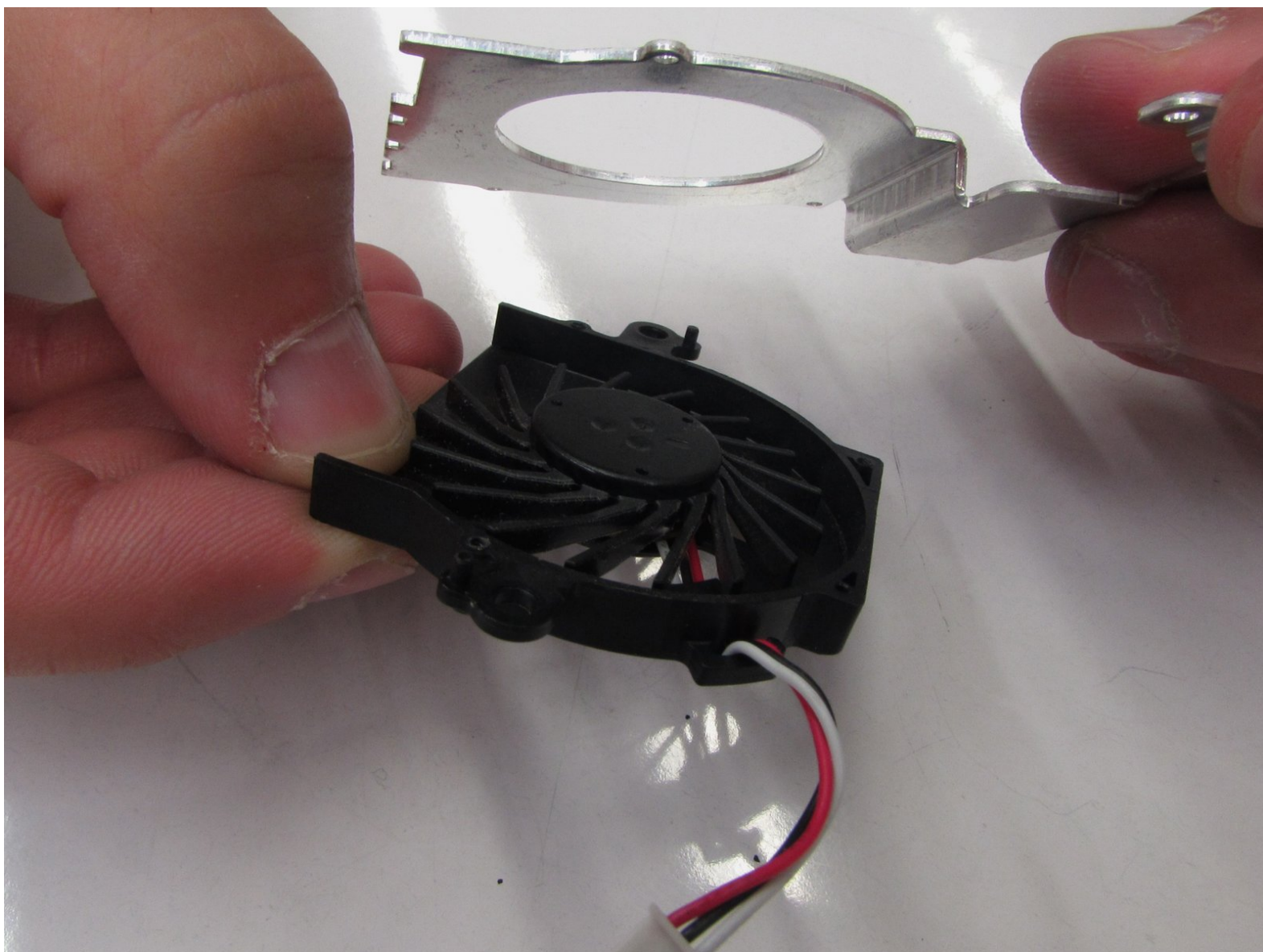




Samsung N150 Plus Fan Replacement

Use this guide to remove the fan from the Samsung N150 Plus.

Written By: patrick Russell



INTRODUCTION

This guide will provide the necessary steps to remove the fan. It will involve unplugging cables from the motherboard that can be easily damaged. Make sure to be gentle when removing connections from the motherboard.



TOOLS:

- [Phillips #00 Screwdriver](#) (1)
- [iFixit Opening Tools](#) (1)
- [Spudger](#) (1)
- [Phillips #000 Screwdriver](#) (1)



PARTS:

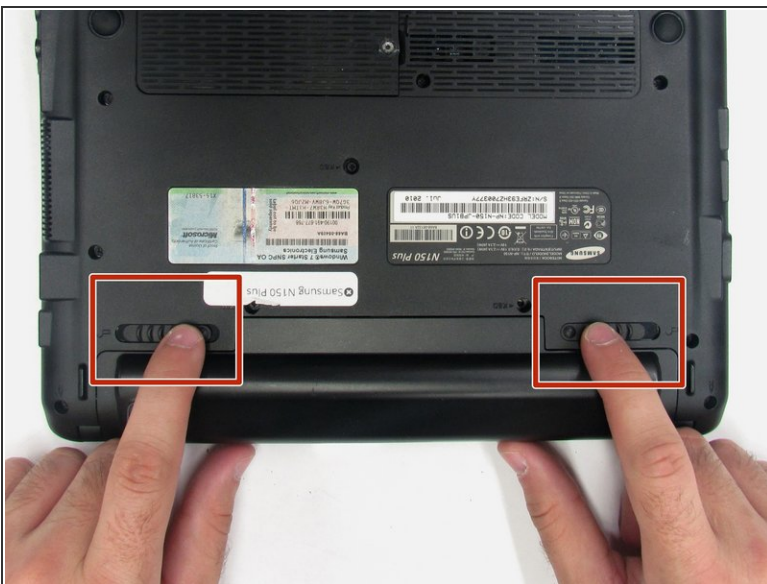
- [Samsung N150 Plus fan](#) (1)

Step 1 — Battery



- Turn off the computer.
- Disconnect the charging cable from the laptop.
- ⚠ Failure to unplug the cable could result in electric shock.
- Flip the laptop upside down with the front face down on a flat surface.

Step 2



- Slide the left and right switch to the "unlocked" position.

Step 3



- While holding the left and right hand switches in the "unlocked" position, push the battery away from the computer.

Step 4 — Back Panel



- Using the Phillip's 00 screwdriver, unscrew the fourteen 7mm screws until the back panel comes loose.

Step 5



- Using either the blue plastic opening tools or spudger tool, wedge one in between the back panel and the laptop.
- Apply pressure upwards till the back panel pops off.

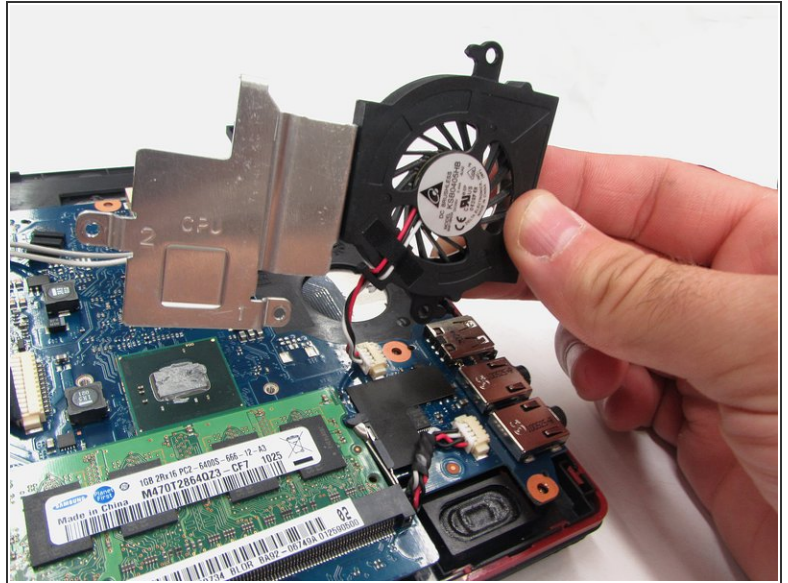
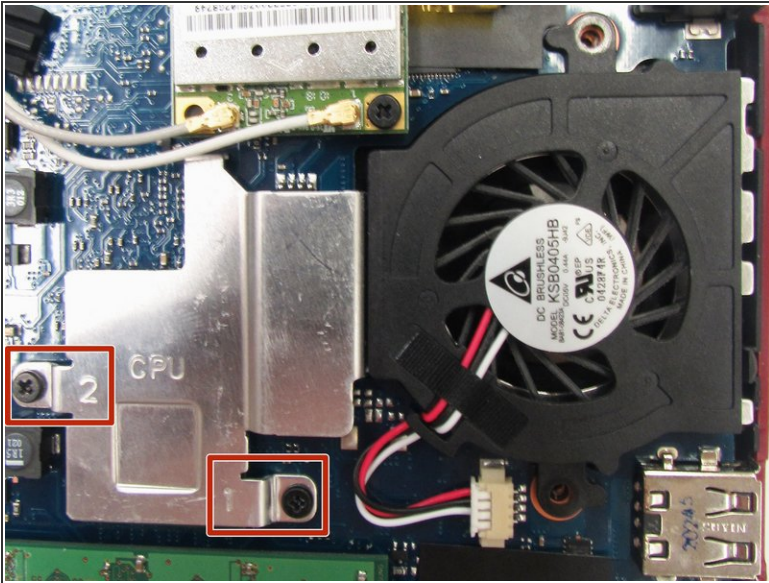
⚠ If the back panel is difficult to remove and feels like it is going to break, DO NOT force it. Check to confirm that all the screws are removed before attempting again.

Step 6



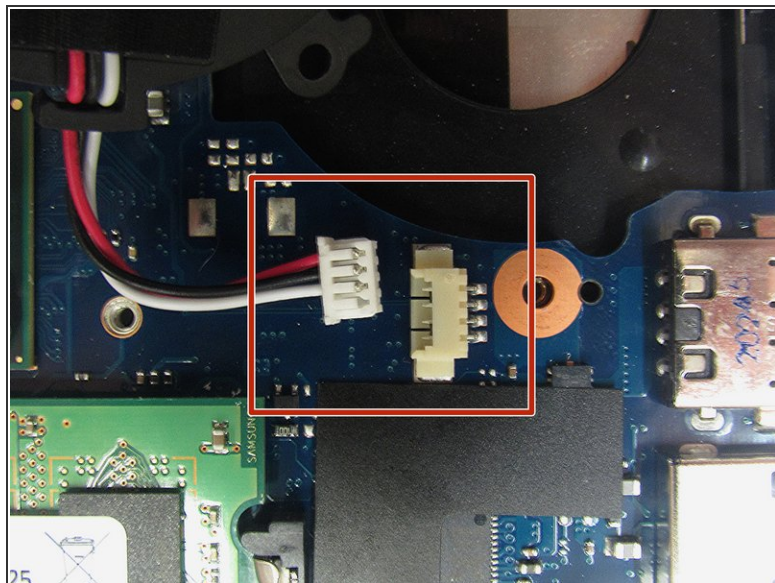
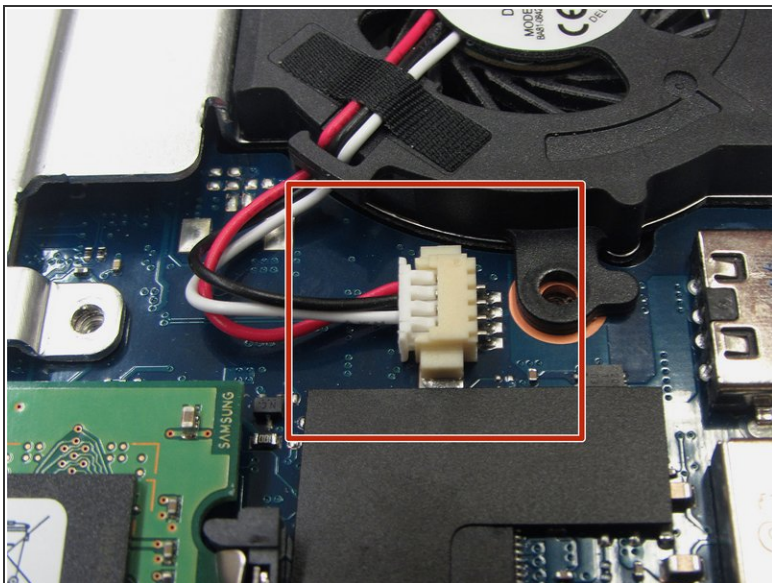
- The computer should be open with the motherboard exposed and internal components exposed. You should now be able to access the Fan and RAM. There are more necessary steps to follow before accessing the screen and keyboard.

Step 7 — Fan



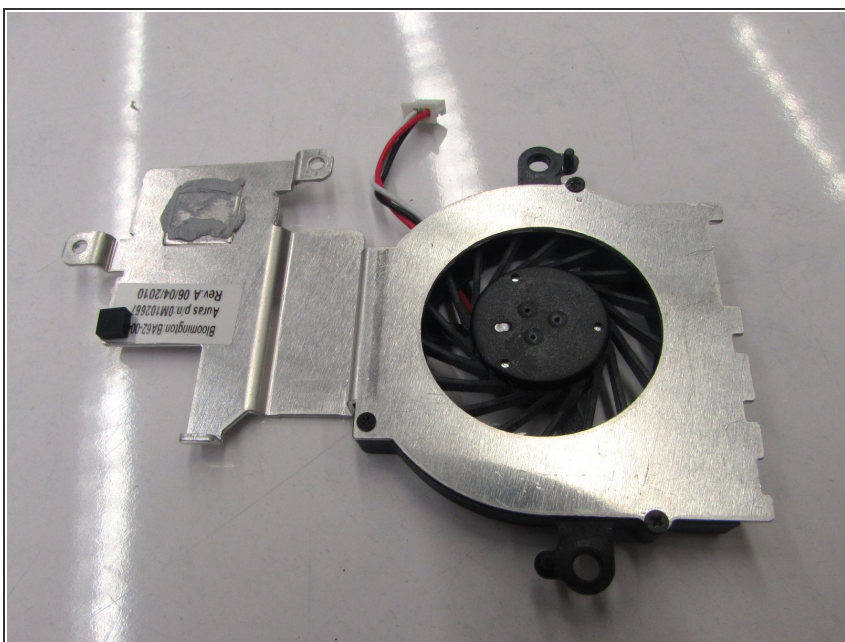
- Use the phillips #00 screwdriver, to unscrew the two 5mm mounting screws labeled 1 & 2 on the right and left hand side of the metal casing labeled CPU.

Step 8



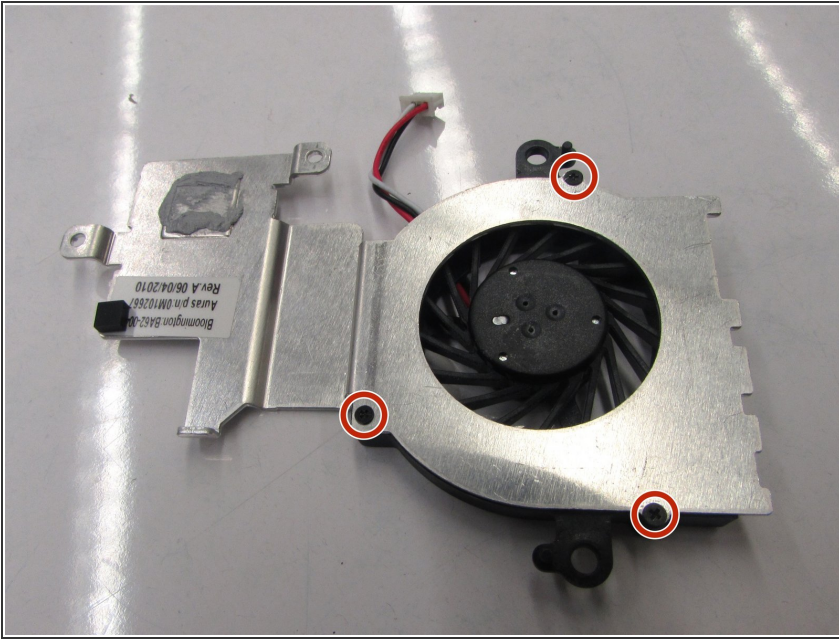
- Unplug the the wires from the white connector attached to the motherboard, by pulling the wires toward you.
- ⚠ When pulling on the wires make sure not to detach the wires from the white plug that connects to the motherboard.

Step 9



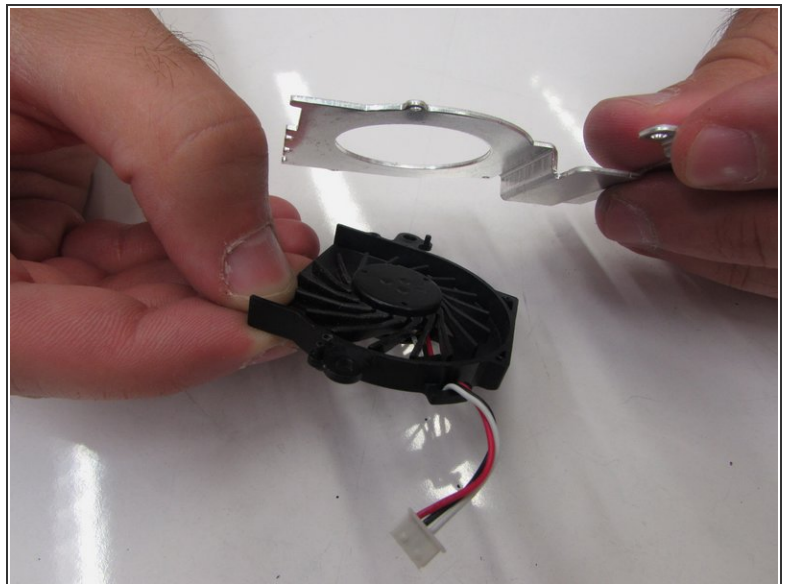
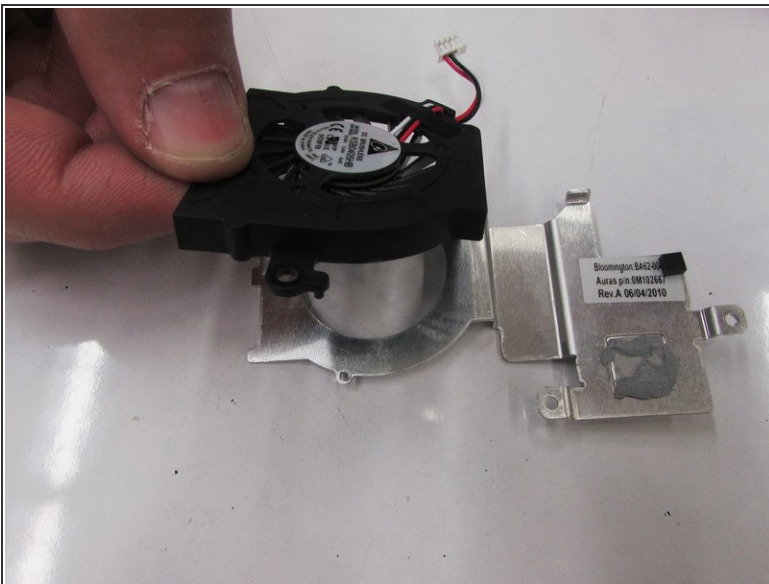
- Remove the metal casing with the fan attached from the motherboard.

Step 10



- Use the Phillips #000 screwdriver, to unscrew the three 4mm screws.

Step 11



- Remove the fan from the metal CPU housing.

To reassemble your device, follow these instructions in reverse order.