



# Jura Drainage valve (2)

Jura Drainage valve guide (2) with better pictures

Written By: Schwarzstein



---

## INTRODUCTION

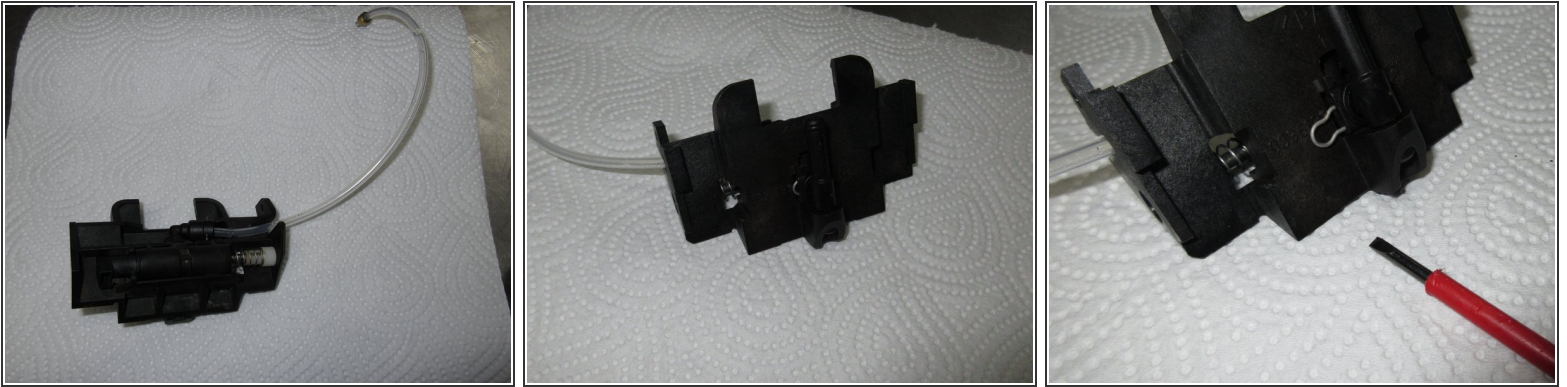
If most of the coffee runs into the drip tray, the seals in the drainage valve may have hardened. Here's how to replace them.



### TOOLS:

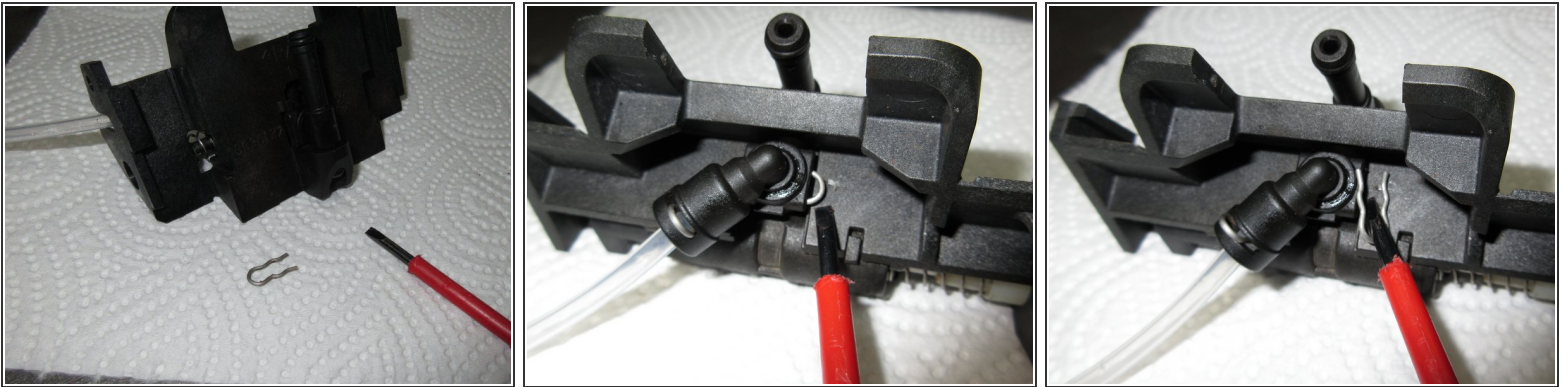
- [New Item](#) (1)
-

## Step 1 — Jura Drainage valve (2)



- The brewing group has already been removed and disassembled. Now it's time for the drainage valve.
- There will be many pictures
- All you need a small flathead screwdriver.

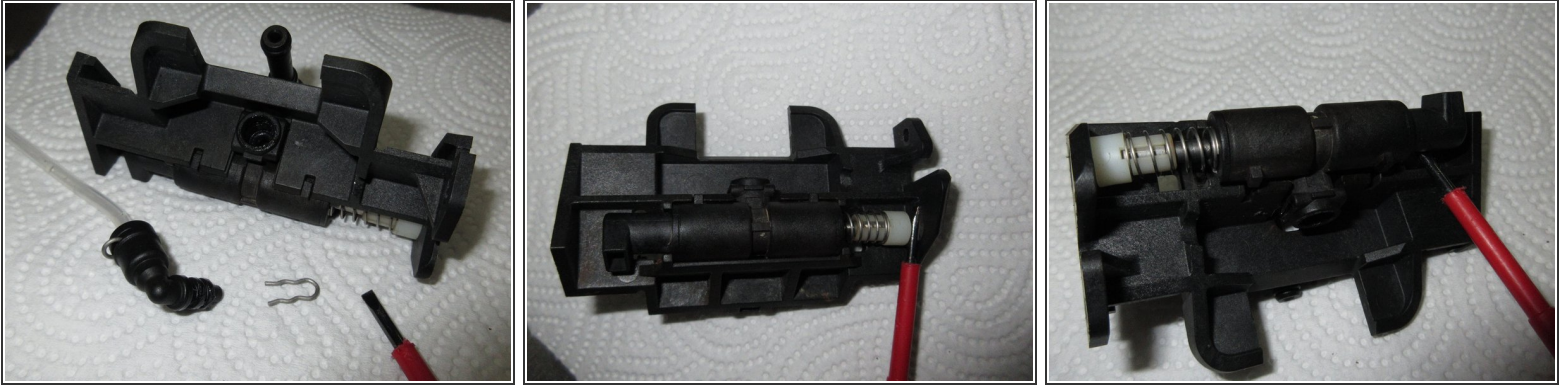
## Step 2



- Images front and back



### Step 3



- Pull off the clamp and pull out the inlet hose. At the end there is a seal, it often gets stuck in the drainage valve. Swap them out when reassembling.

### Step 4



- Pull out the clip on the docking tube
- Pry out the valve body. Make sure the white cap slides out of its hole.
- Detach the docking nozzle.

## Step 5



- Detailed photos.
- The position of the sealing rings are marked green in picture 3.
- The sealing ring on the docking socket is marked in red in picture 2. It is especially important. It's a little thinner than the other two.
- The brackets are marked in red.

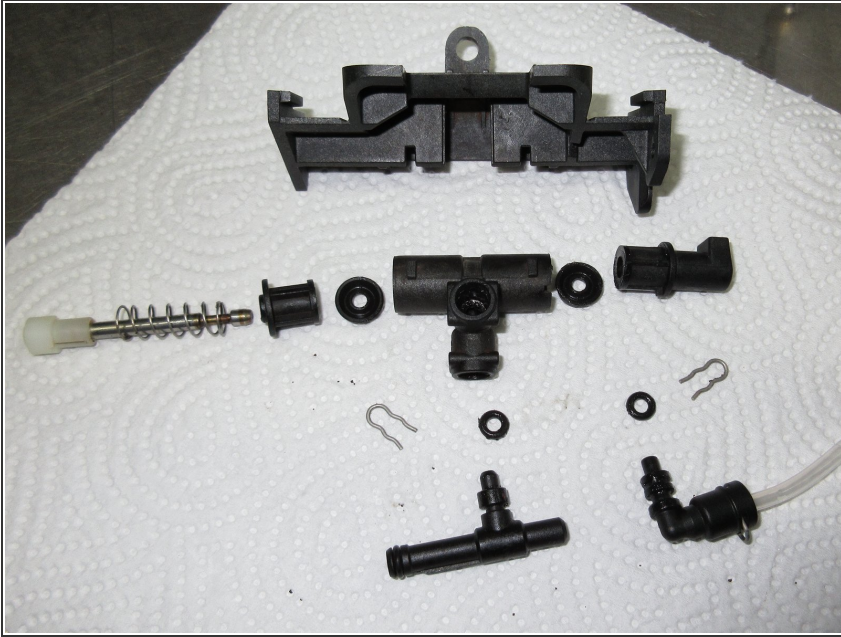
## Step 6



- Here all the parts of the valve.

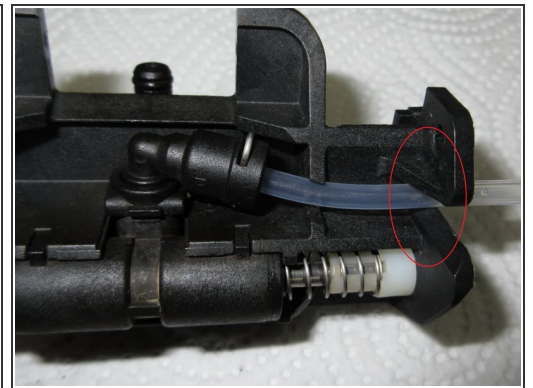
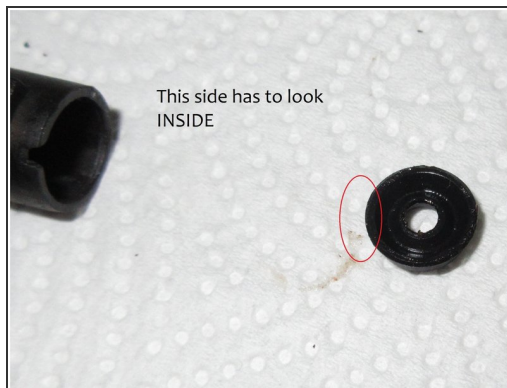
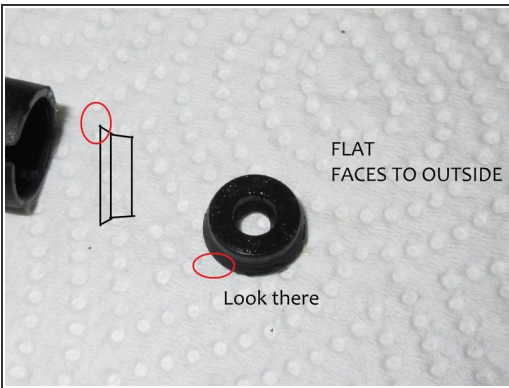


## Step 7



- Here is the entire valve in one picture

## Step 8



### Reassembly

- When assembling, make sure that the lips of the seals point to the pressure side, i.e. inward, and the flat side outward.
- When installing, make sure that the pressure hose runs through the slot in the valve carrier.

Follow the steps in reverse order to reassemble your device.