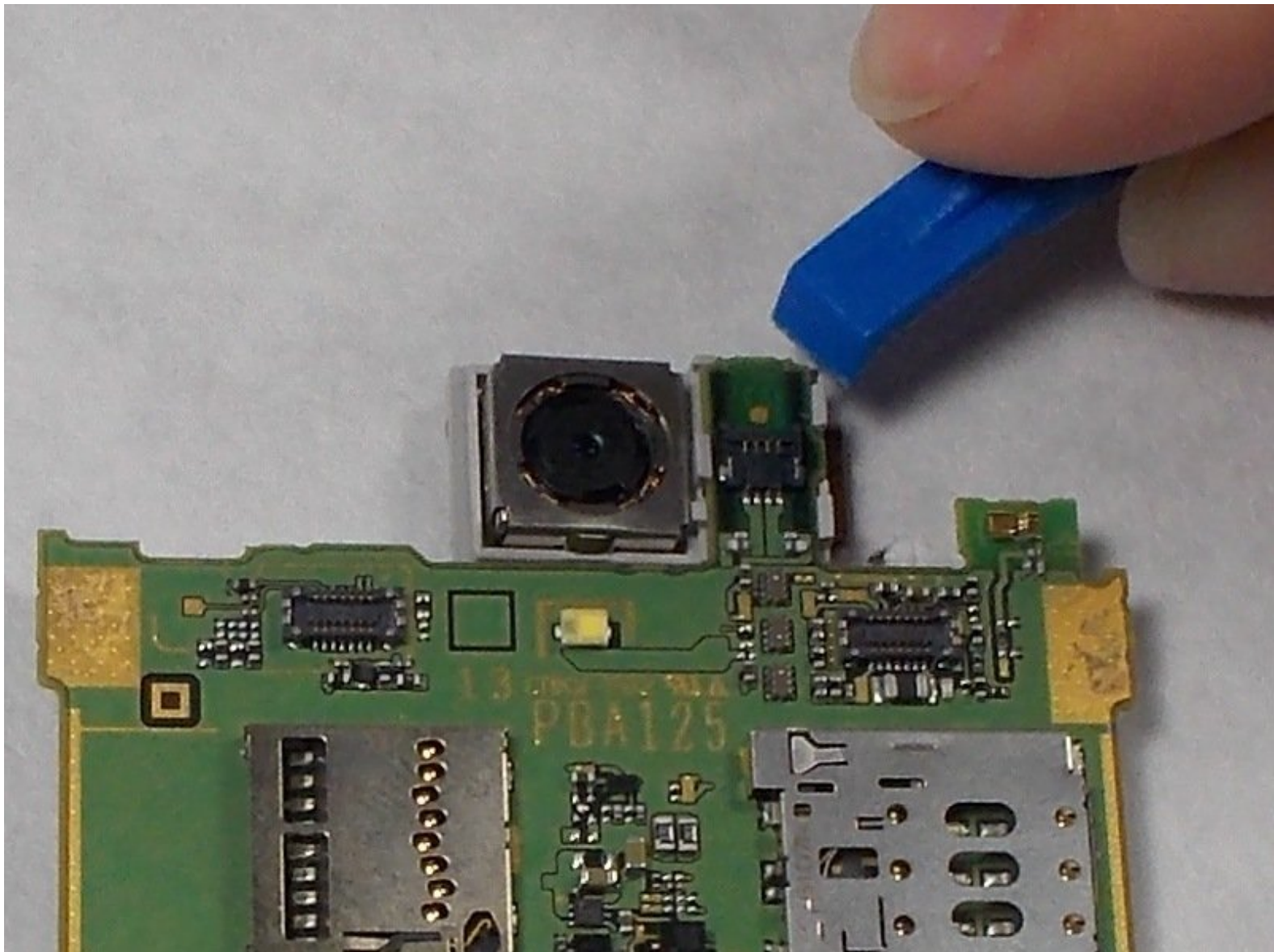




# Sharp Aquos Crystal Rear Camera Replacement

Replace the rear camera for your Sharp Aquos Crystal.

Written By: Felicia Imbriano



---

## INTRODUCTION

If you cracked your camera lens or if it is not working properly, you can replace it following this guide.

---



### TOOLS:

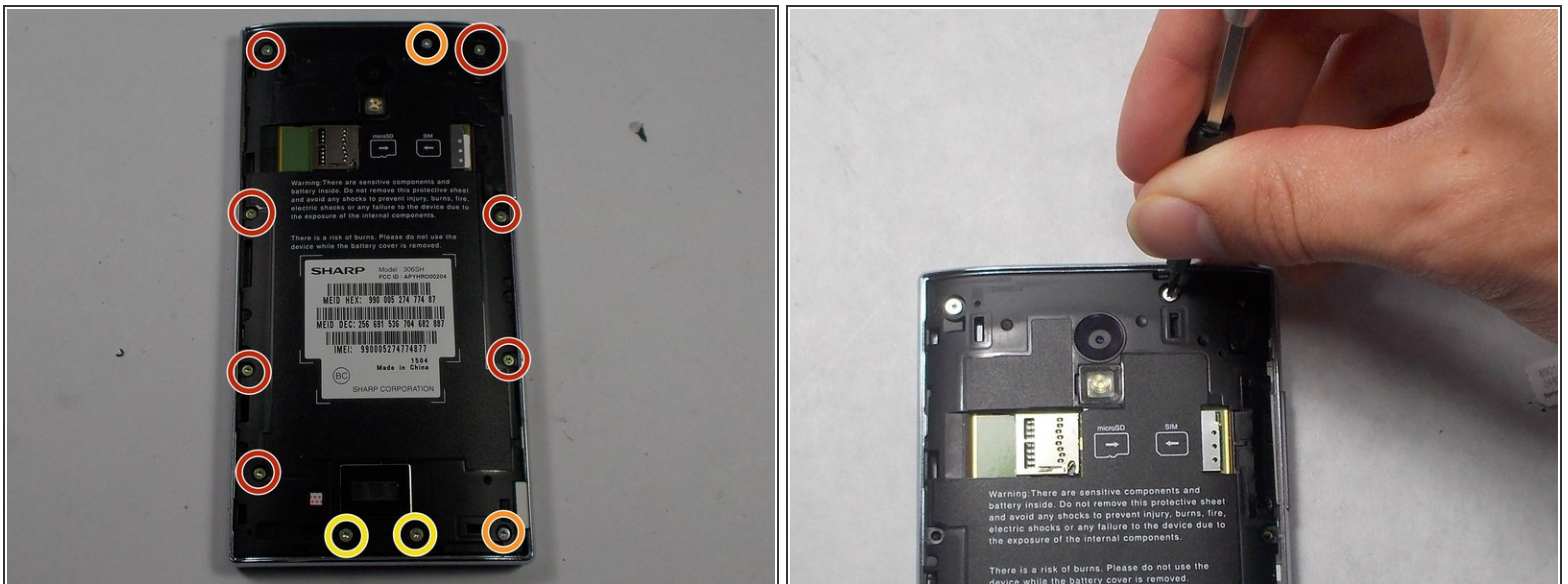
- [iFixit Opening Tools](#) (1)
  - [Star Bit Screwdriver](#) (1)
-

## Step 1 — Back Panel



- Peel back the back cover of the phone from the access point to remove it. It should come off easily using your hands.

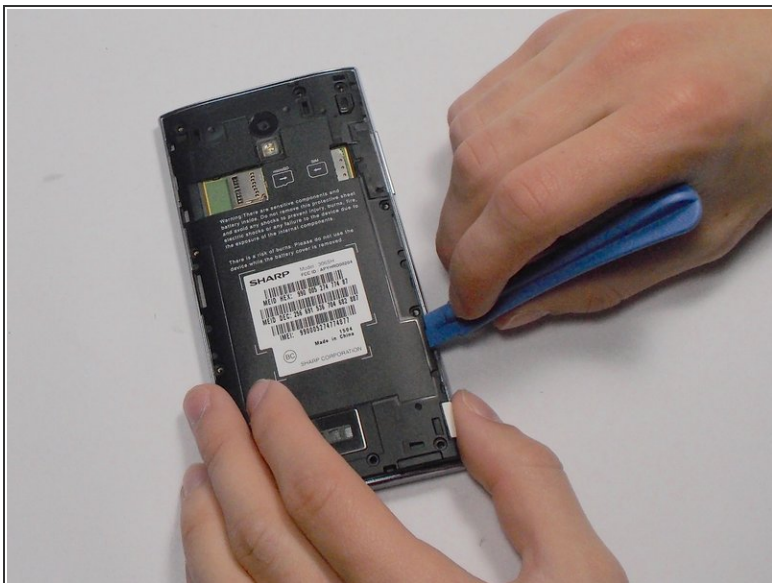
## Step 2 — USB Port



- Remove seven 3mm Star #5 screws shown in the picture with a screwdriver.
- Remove two 3.5mm Star #5 screws shown in the picture with a screwdriver.
- Remove two 5mm Star #5 screws shown in the picture with a screwdriver.

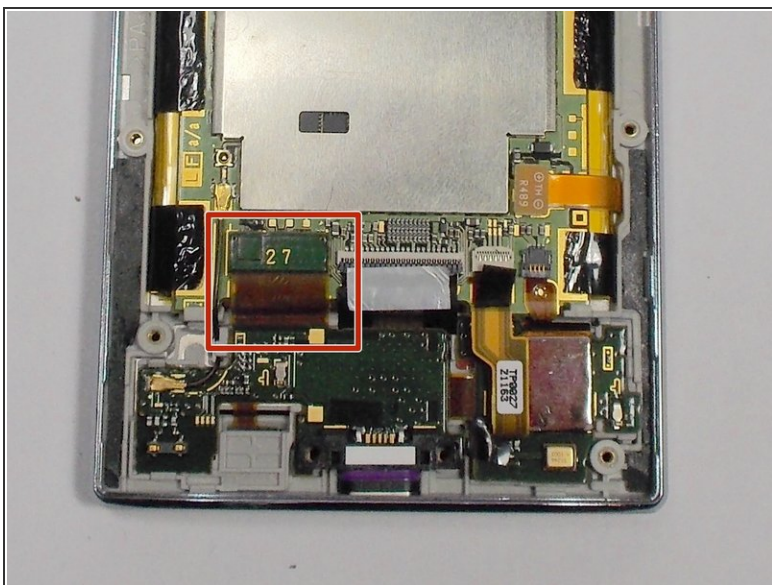


### Step 3



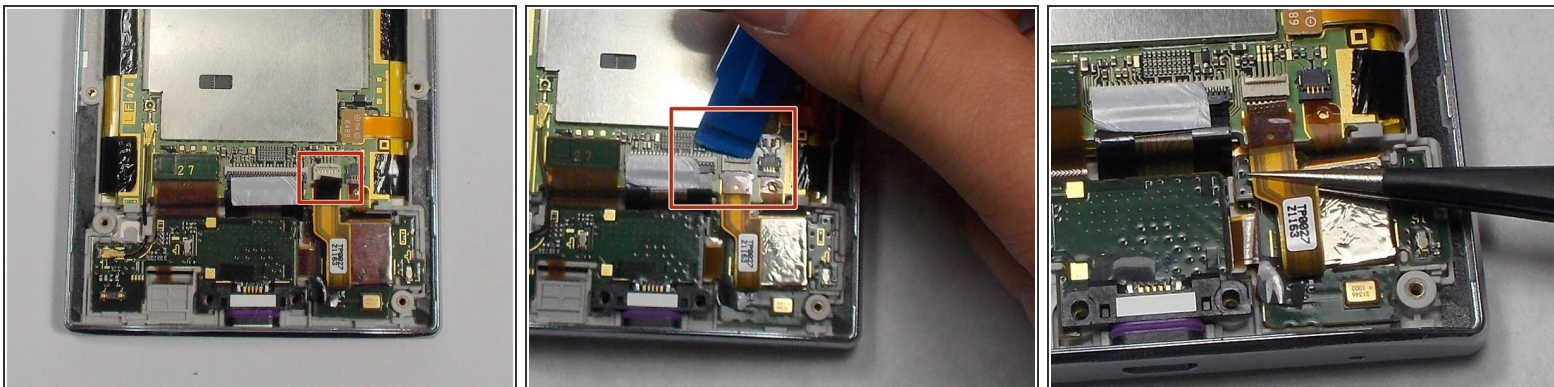
- Pry open the back panel using a plastic opening tool. Do this around the edges until you are able to lift it off.

### Step 4



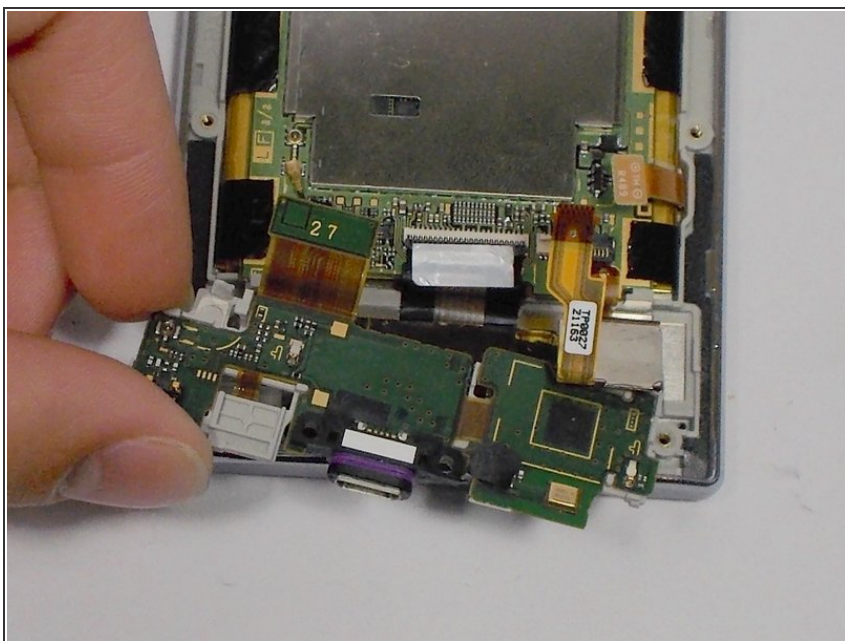
- Disconnect the wire by lifting it up with a plastic opening tool.

## Step 5



- To disconnect the cable, use the tip of a spudger or your fingernail to flip up the small retaining flap. Then, you can safely pull the ribbon cable out.

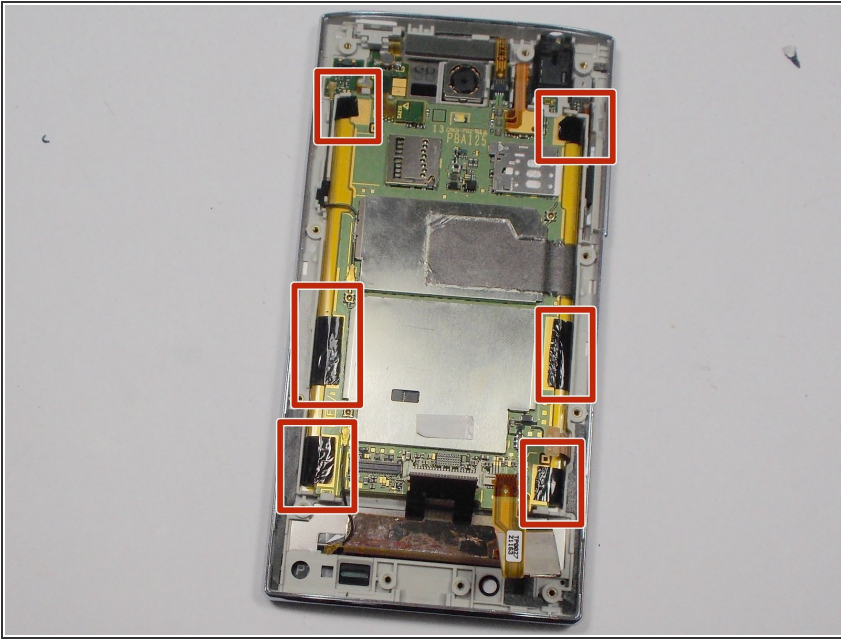
## Step 6



- After removing the wires, carefully snap out the usb port with your hands. It is held down by some plastic clips, so some force may be needed.

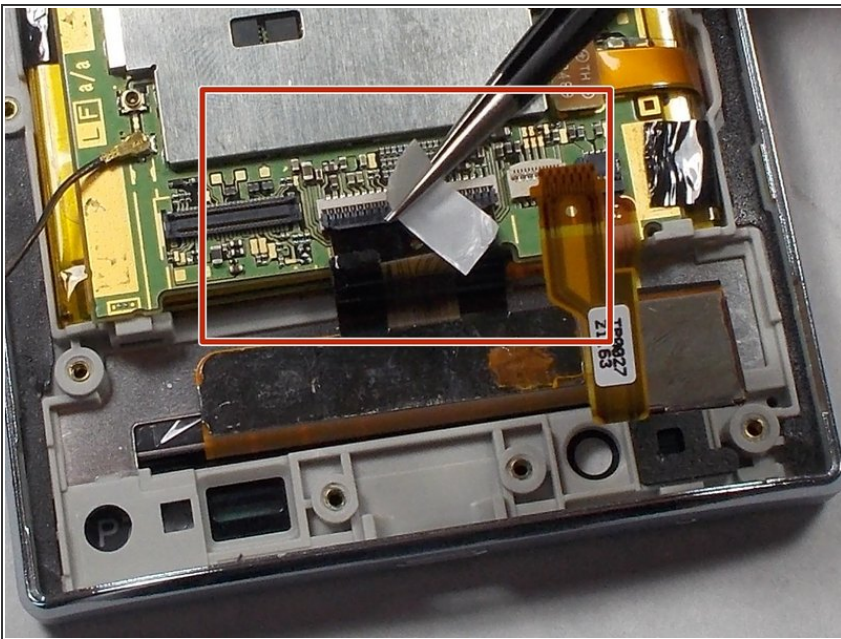


## Step 7 — Motherboard



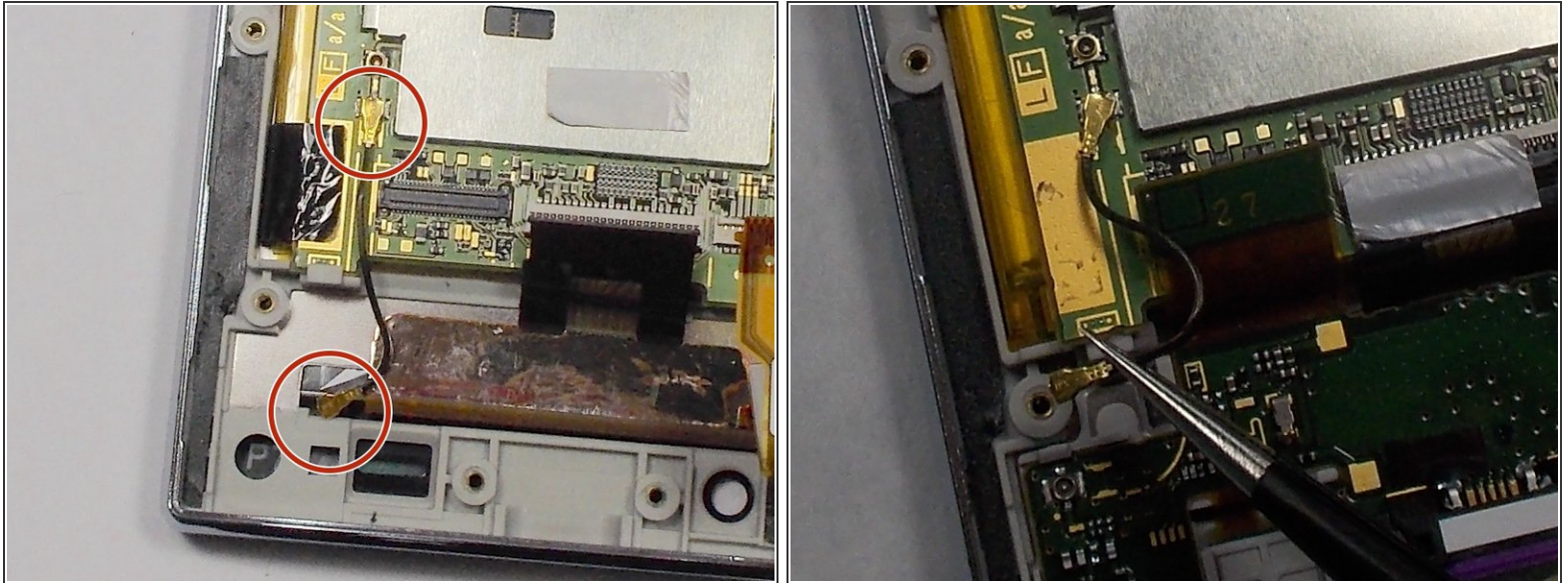
- Peel off the black pieces of tape.

## Step 8



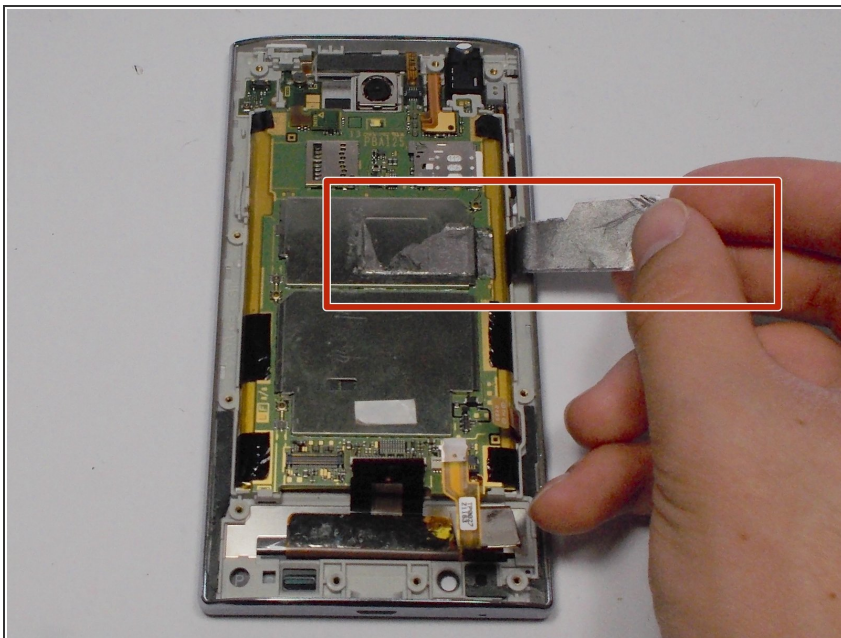
- Use the tip of a spudger or your fingernail to flip up the small retaining flap. Then pull the cable out using tweezers.

## Step 9



- Remove the wire from the two marked connections using tweezers to pull the wire apart from the device.

## Step 10



- Peel the tape off with your hands.

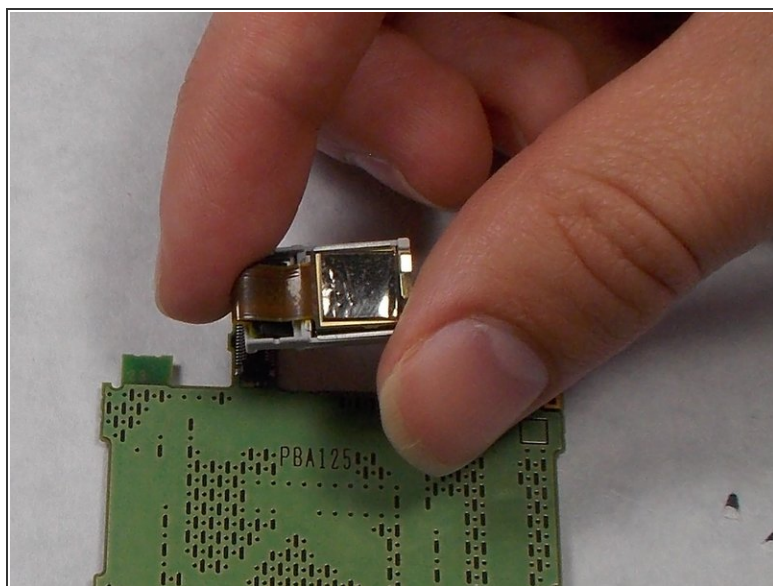
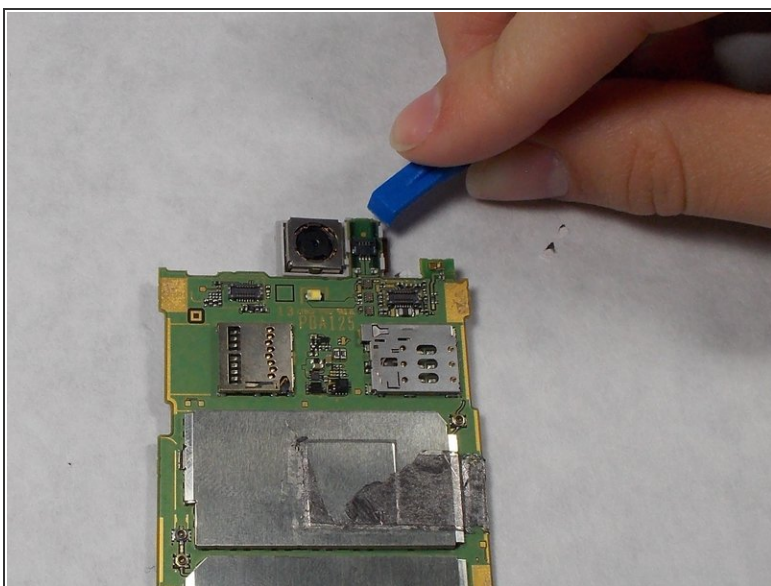


## Step 11



- Lift the motherboard out with your hands.

## Step 12 — Rear Camera



- Disconnect the camera from the board using a plastic opening tool.
- ⓘ Remove the camera from the back of the circuit board.



To reassemble your device, follow these instructions in reverse order.