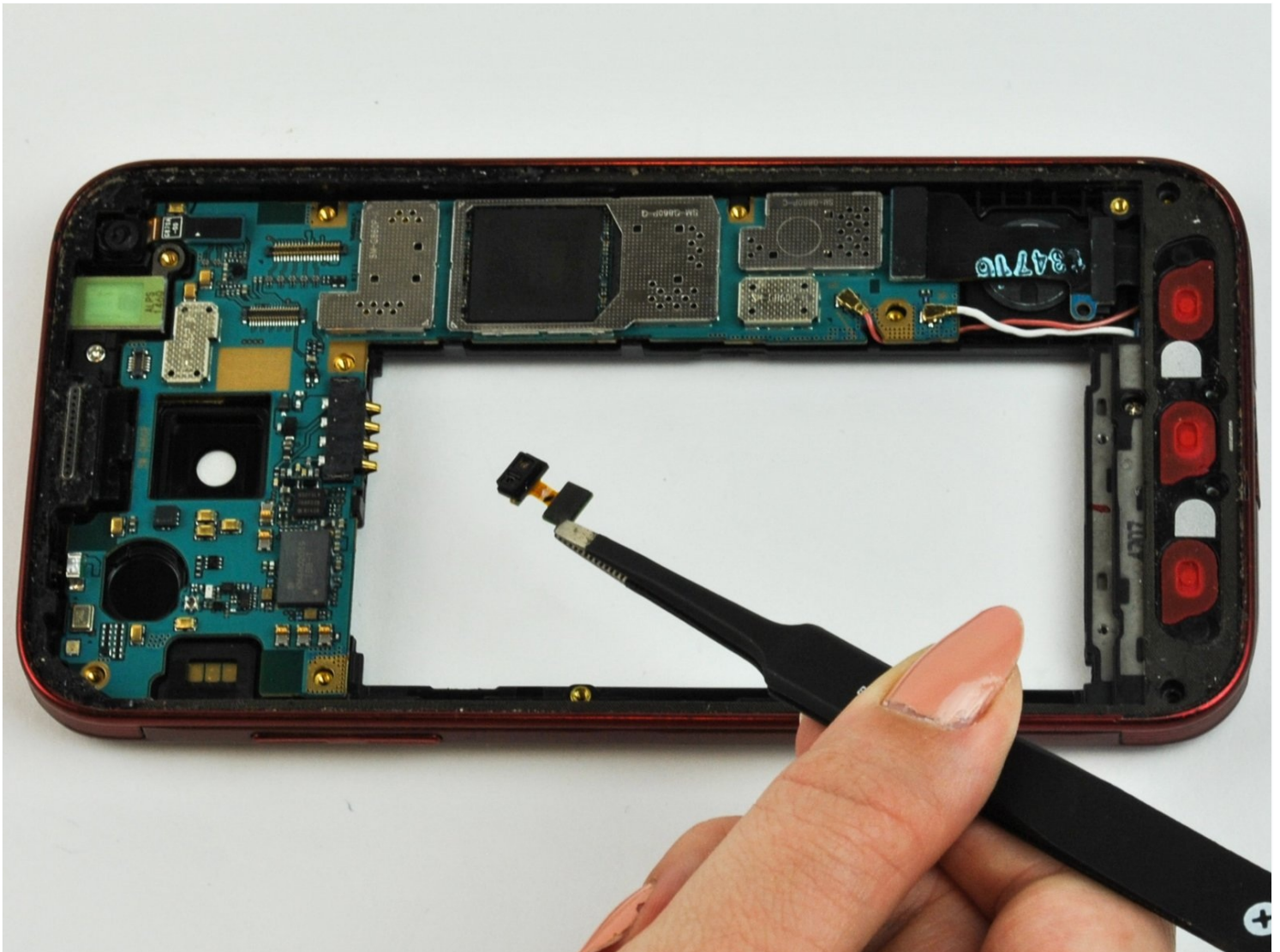




Samsung Galaxy S5 Sport Front Facing Camera Replacement

This guide will show you how to replace the...

Written By: Caroline Janiszewski



INTRODUCTION

This guide will show you how to replace the front-facing camera on this device. As with the back-facing camera, this replacement will require most of the phone to be taken apart beforehand.

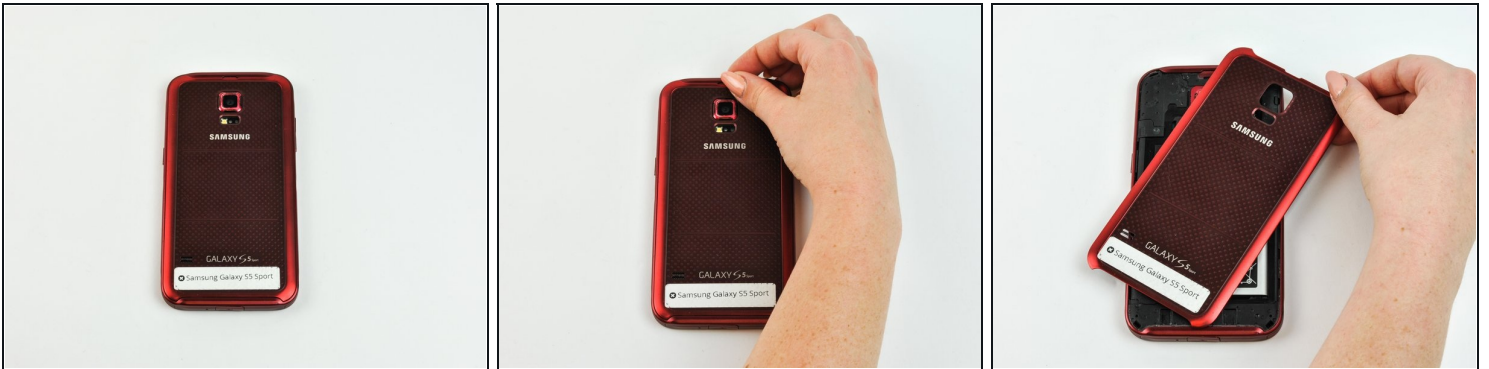
TOOLS:

[Spudger](#) (1)
[iFixit Opening Tool](#) (1)
[Heavy-Duty Spudger](#) (1)
[Heat Gun](#) (1)
[Phillips #000 Screwdriver](#) (1)
[6-in-1 Screwdriver](#) (1)

PARTS:

[Galaxy S5 Sport Front Camera](#) (1)

Step 1 — Battery



- Remove the back casing of the phone using the notch located at the top.

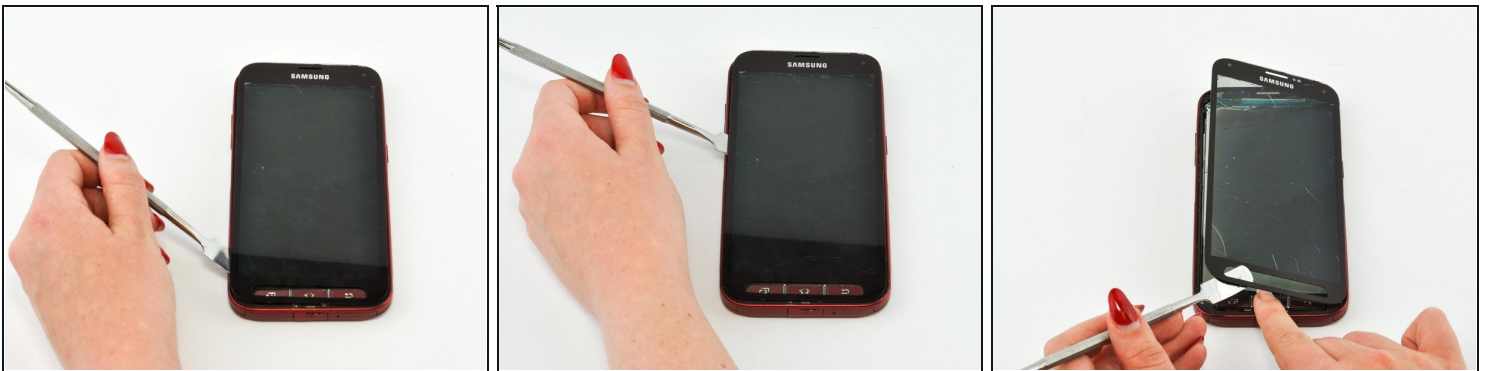
Step 2



- Lift up the battery using a plastic spudger or fingernail.

⚠ Damaging the battery may result in physical injury and/or damage to the phone.

Step 3 — Screen



- Using a plastic opening tool or spudger, pry up the screen after the adhesive has melted.

⚠ When working with electronics, it's important to choose a tool that's ESD-safe to avoid accidental damage to the device. The metal spudger is great when you need serious prying power, but the regular black nylon spudger or a plastic opening tool should be used whenever possible.

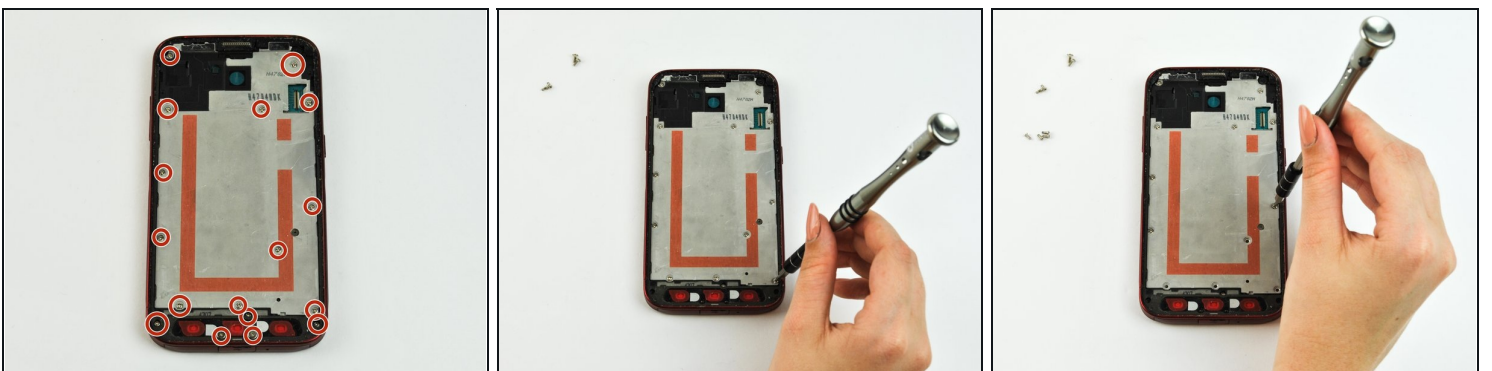
- ☒ Because it is a water-resistant phone, the screen cannot be taken apart without breaking.

Step 4



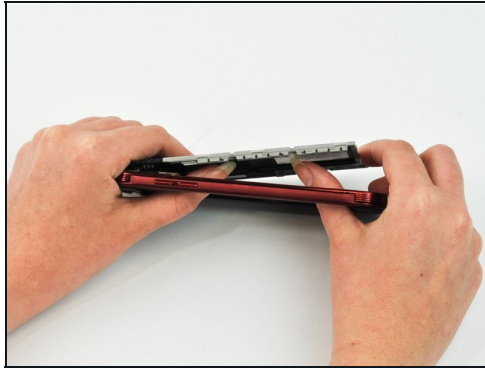
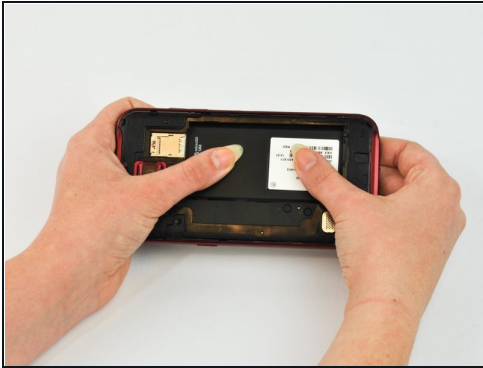
- The plastic cover of the phone may separate from the LCD screen. If so, also remove the LCD screen with the regular nylon spudger.
- ⓘ In the upper right area of the LCD screen, there is a connecting ribbon. Be careful not to rip its connection to the motherboard.
- ⚠ Do not hold the phone too close to your face or eyes. Small glass shards may dislodge or the metal spudger may slip.

Step 5 — Front-Facing Camera



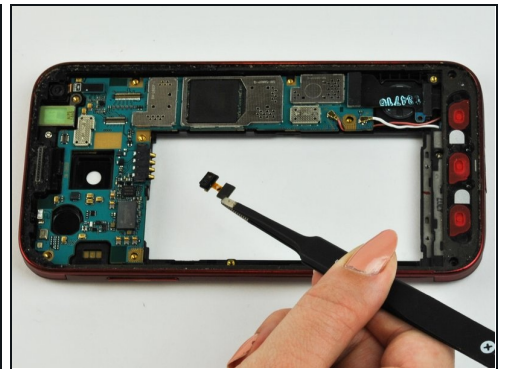
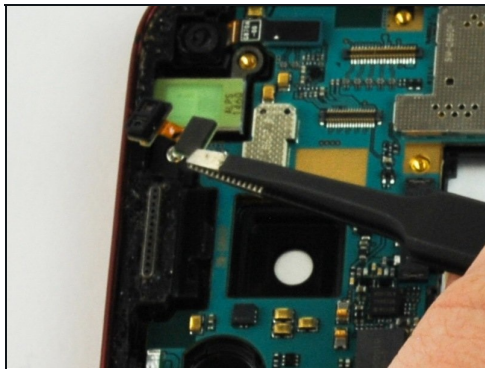
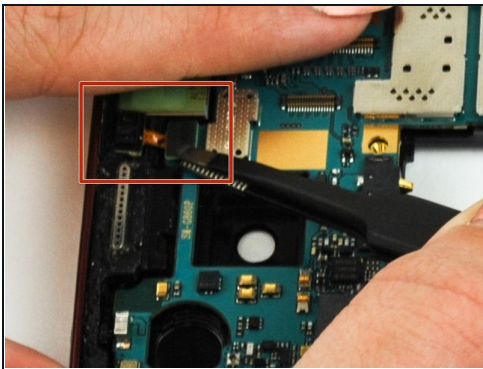
- Remove the screws around the plate

Step 6



- Push the plate out by applying pressure to the battery cavity.

Step 7



- Remove the camera from the plug at the top of the phone with tweezers. It should pop out fairly easily.

To reassemble your device, follow these instructions in reverse order.