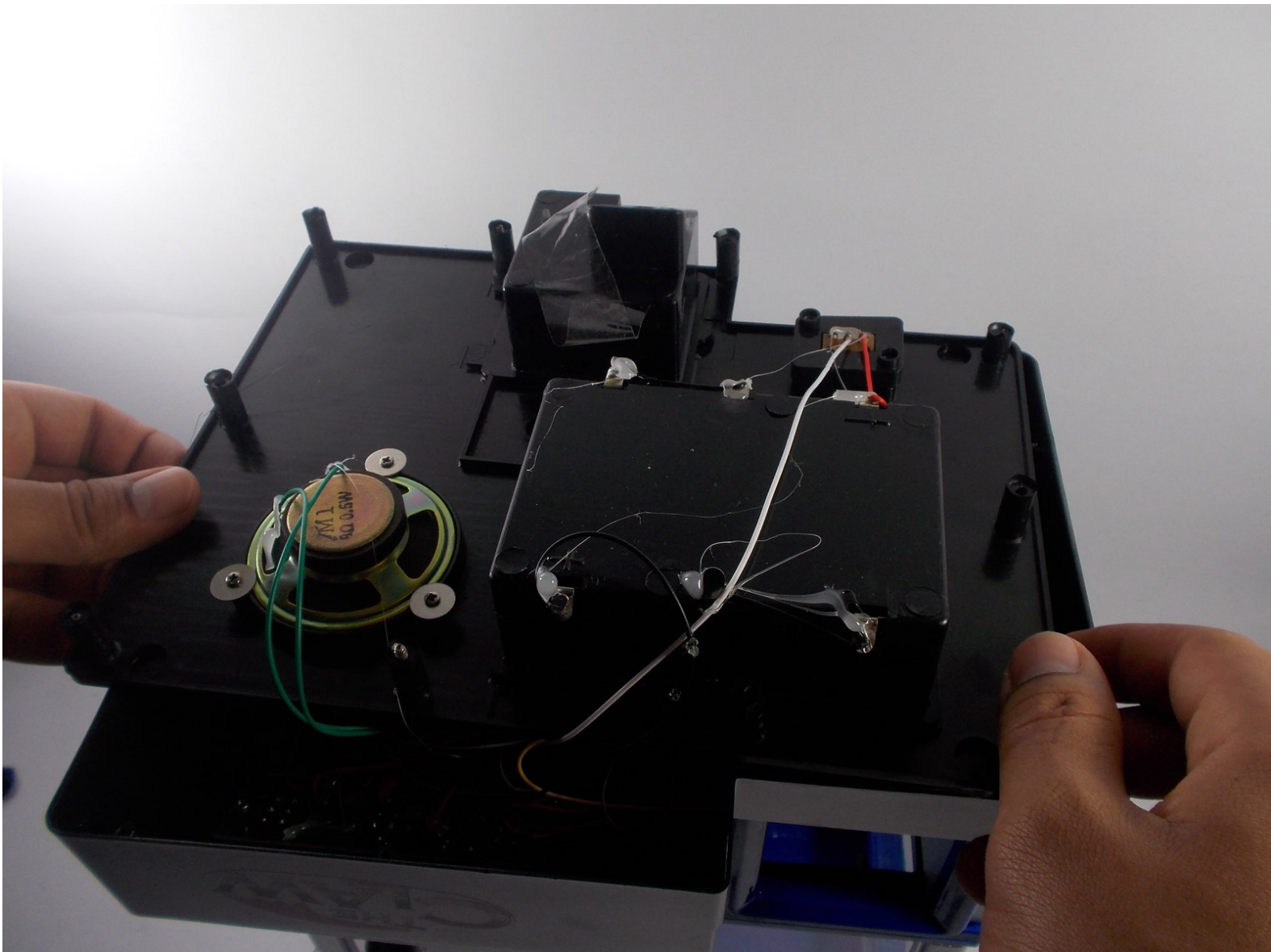




# The Claw Music Player Replacement

This guide is to assist users in replacing the music player in the claw machine.

Written By: Alain Pierre



## INTRODUCTION

If your device is no longer making any sounds or playing music, it is possible that your music player will need to be replaced. This is a small speaker system located in the bottom of your claw machine. In order to access this you will need to remove the bottom cover. Following this guide will make the music player replacement an easy task for any user.



### TOOLS:

- [Soldering Iron](#) (1)
- [Solder](#) (1)
- [Flush Wire Cutters](#) (1)
- [Phillips #1 Screwdriver](#) (1)



### PARTS:

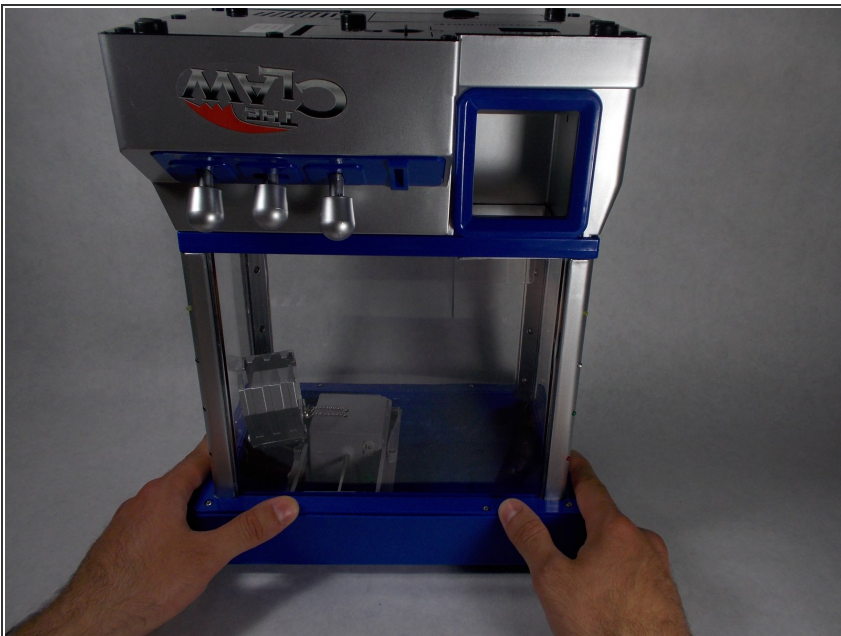
- [Music Player](#) (1)

## Step 1 — Bottom Cover



- Place The Claw in upright position with controls facing you.

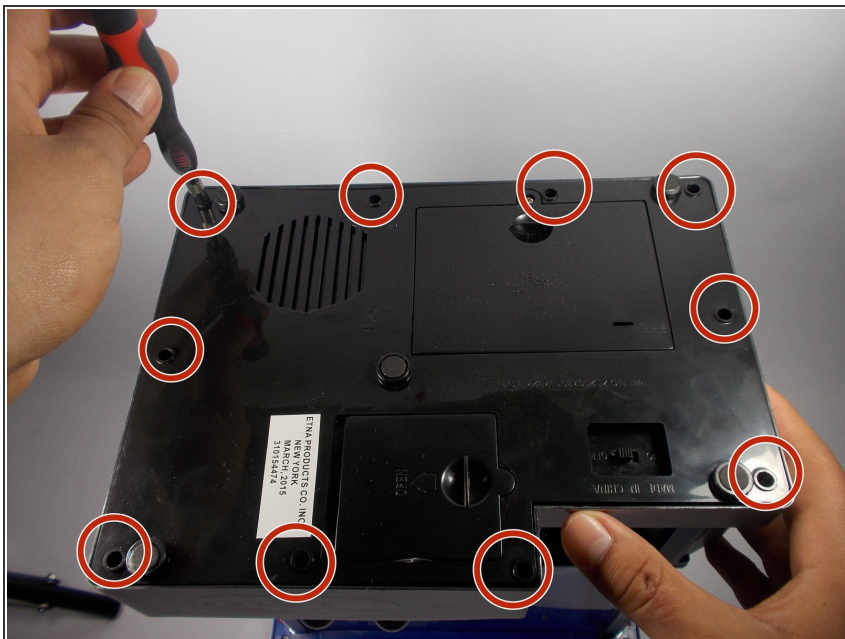
## Step 2



- Gently flip The Claw machine upside down with the controls facing you.



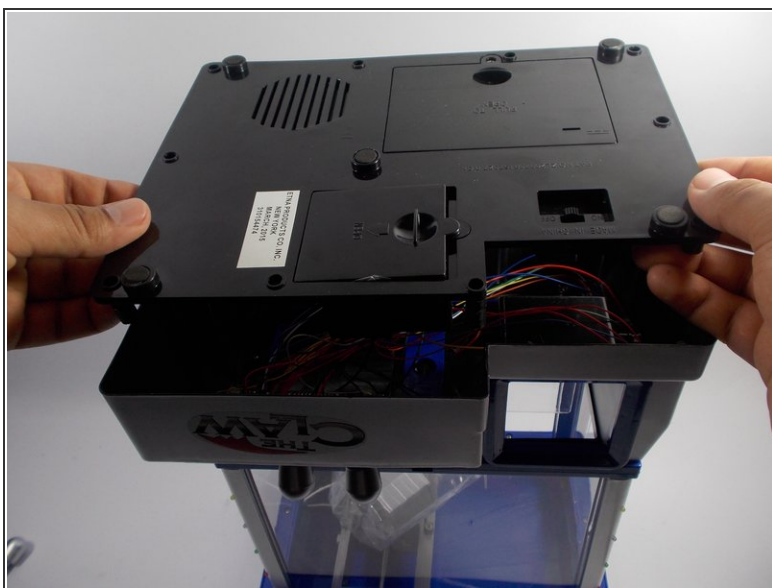
### Step 3



- Remove all ten screws from the bottom cover using a Phillips #1 screwdriver.

ⓘ You will need a screwdriver with a long thin neck to fit in the screw holes.

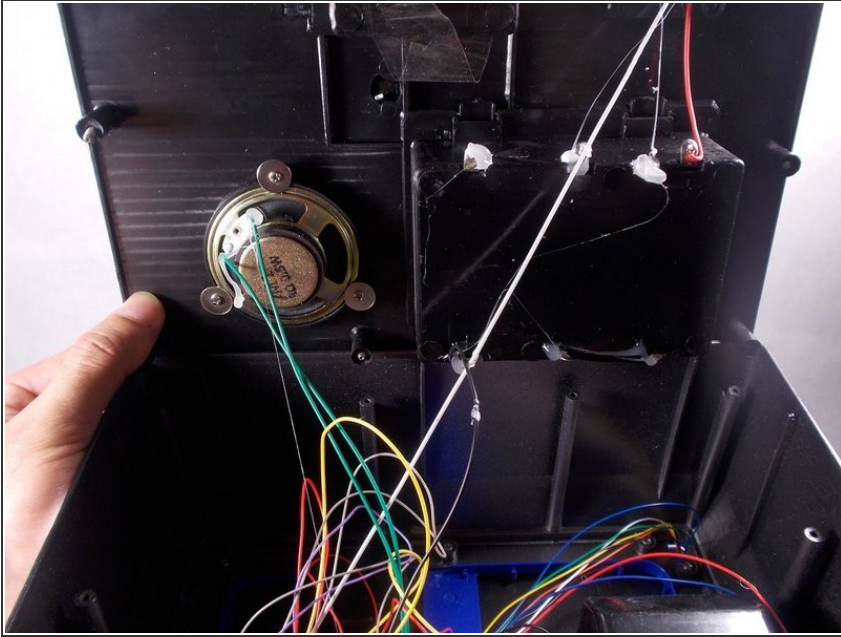
### Step 4



- Slide the bottom cover off to the side.

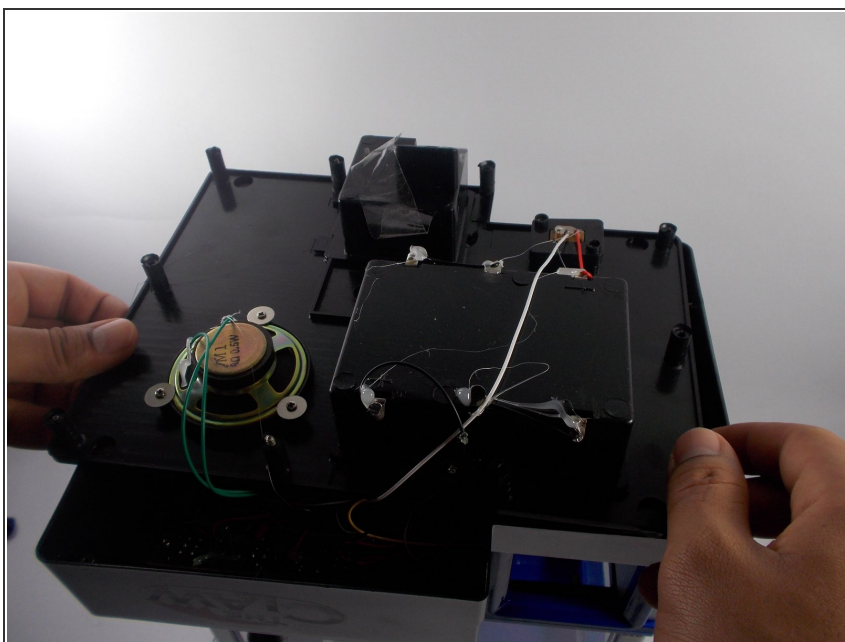
⚠ Do not completely remove bottom cover as it is still connected to wires.

## Step 5



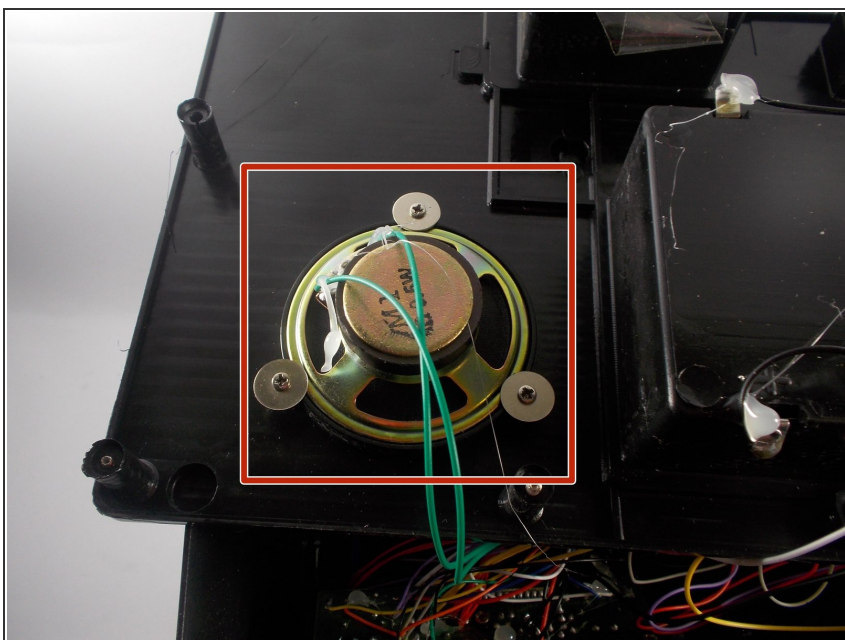
- ❗ Complete removal of the bottom cover is not necessary, however if you feel you need to take the cover completely off the machine to complete your task it can be done by the following process.
- You will need to cut the two green wires attached to the music player.
- Then you will need to cut the white wire that leads to the battery compartment.
- Finally you will need to cut the black wire leading to the battery compartment as well.
- ★ The complete removal of the bottom cover requires the cutting and soldering of wires. For help with soldering reference: [How To Solder and Desolder Connections](#).

## Step 6 — Music Player



- Turn the bottom panel over to have easy access to the music player.

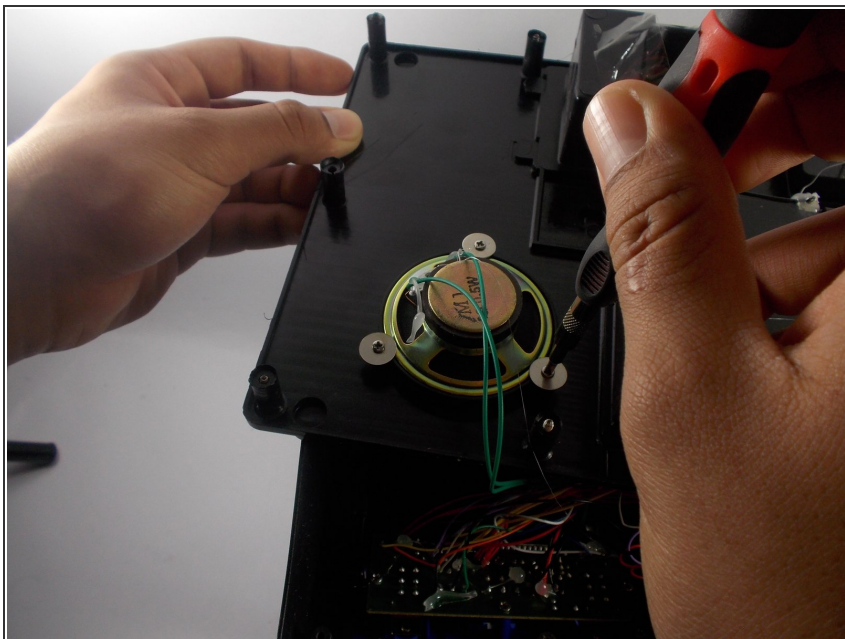
## Step 7



- Locate the music player inside the device.
- ⚠ Be sure you have turned the device off and removed the batteries before you reach into the machine with your hands or any metal tools.



## Step 8



- Locate the screws that hold the music player in place and remove them with a Phillips screwdriver.
- ★ The complete removal of the music player requires the cutting of existing wires and soldering new wires to the new player. For help with soldering reference: [How To Solder and Desolder Connections](#)

To reassemble your device, follow these instructions in reverse order.