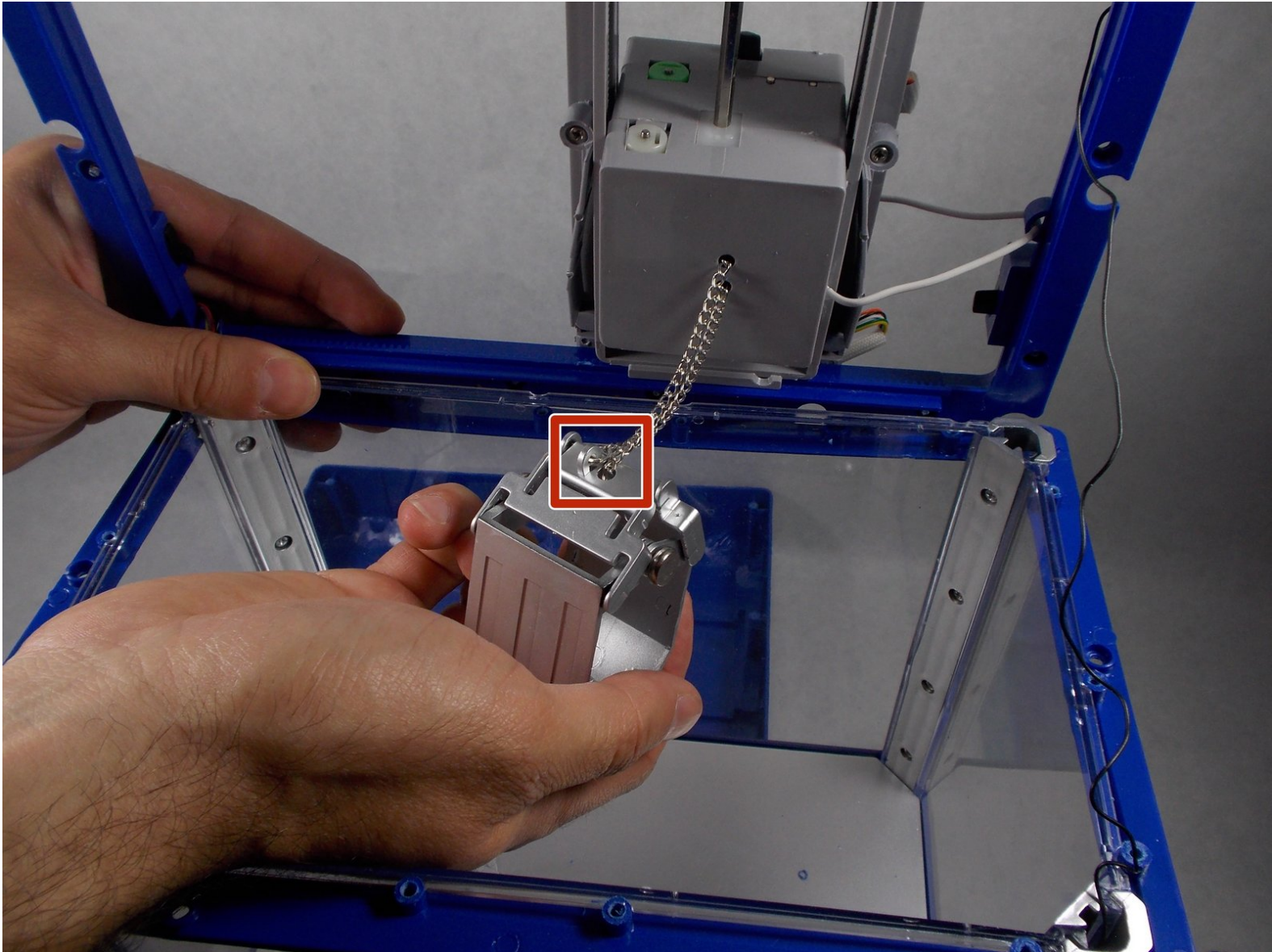




# The Claw "Claw" Replacement

This guide was created to assist users in replacing the mechanical claw on the claw machine.

Written By: Alain Pierre



## INTRODUCTION

If you are experiencing trouble with the claw or it does not seem to be opening or closing properly, it is possible that the claw itself is broken or damaged. This requires the user to open the claw device in order to access the mechanical claw. Follow this easy guide in order to properly and easily replace your claw.



### TOOLS:

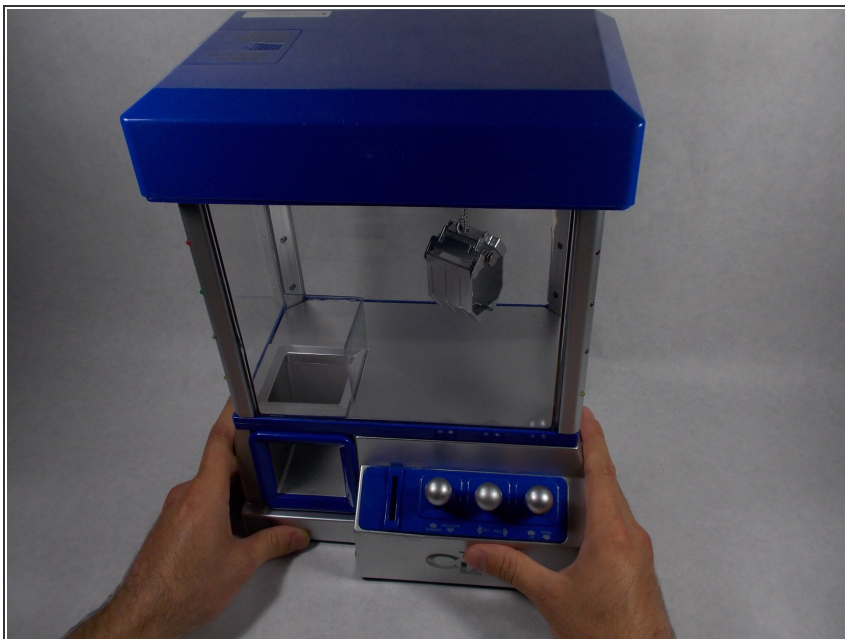
- [Small Needle Nose Pliers](#) (1)
- [Phillips #1 Screwdriver](#) (1)



### PARTS:

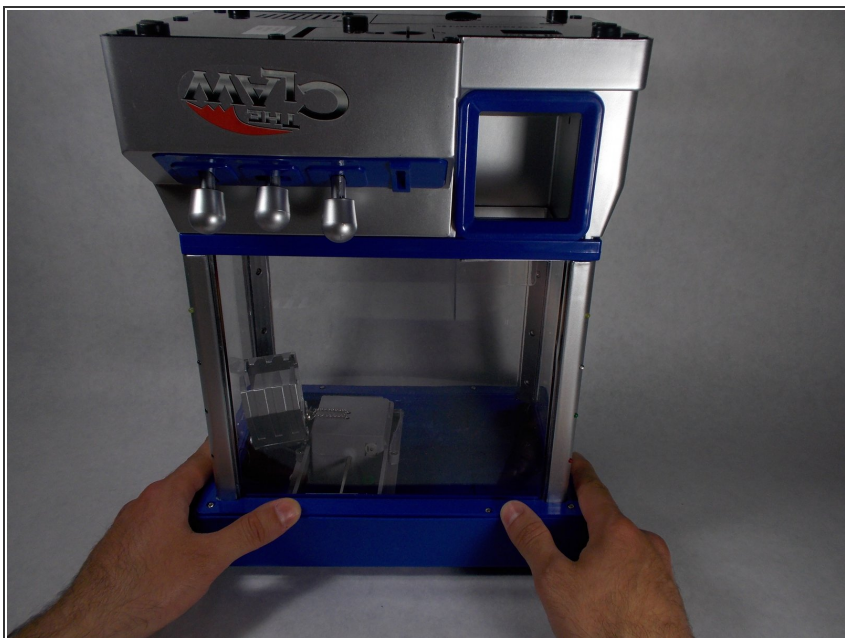
- [Replacement Claw](#) (1)

## Step 1 — Top Cover



- Place The Claw machine in the up-right position with the control knobs facing you.

## Step 2



- Turn The Claw machine upside-down placing the top cover on the surface of your work area.

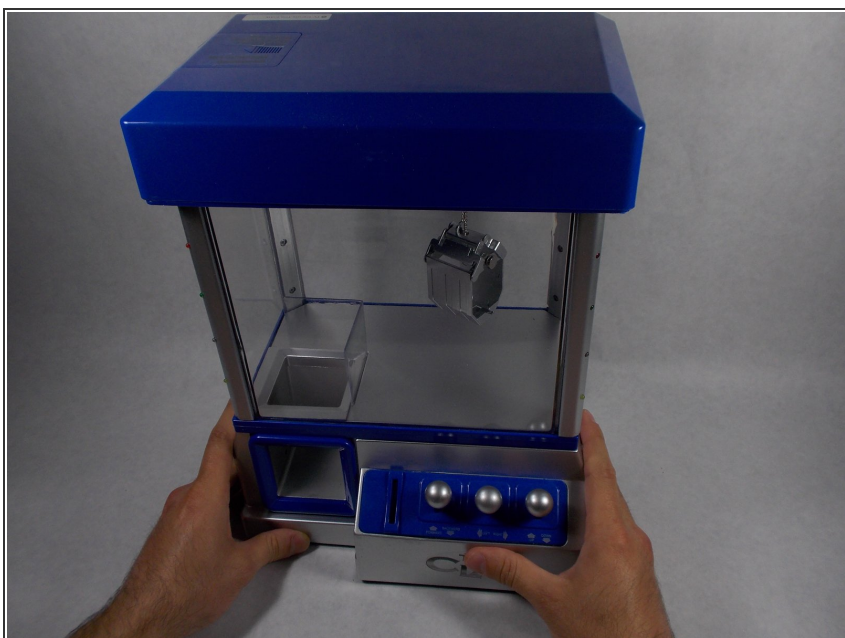


## Step 3



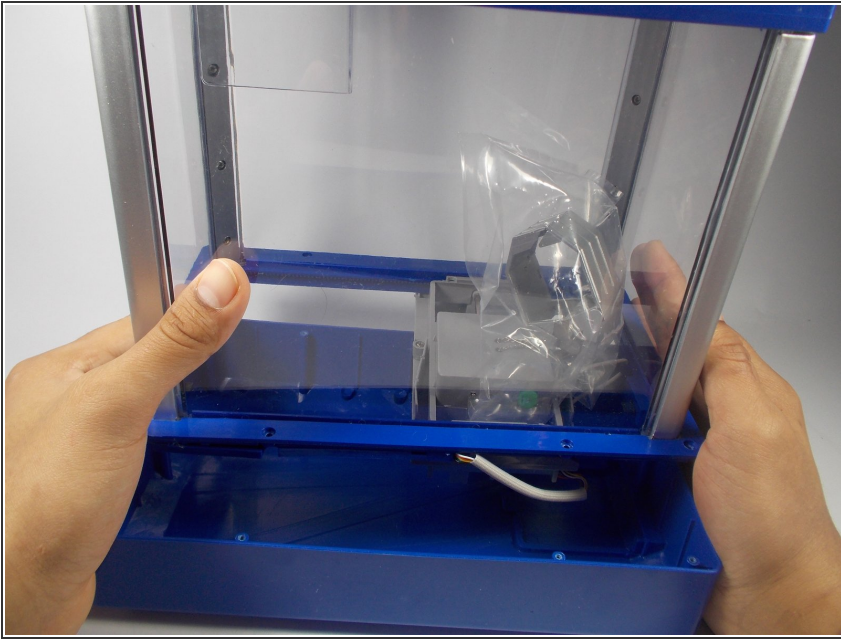
- Remove all ten 6mm phillips #1 screws underneath the top cover using your #1 phillips head screwdriver.
- ⓘ It is helpful to choose a clear, well lit work space. There are multiple tiny screws that are easy to lose.

## Step 4



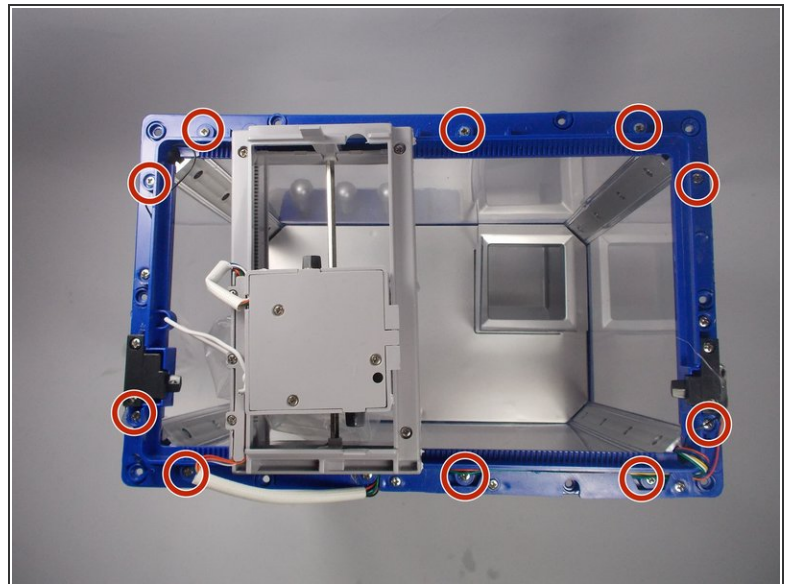
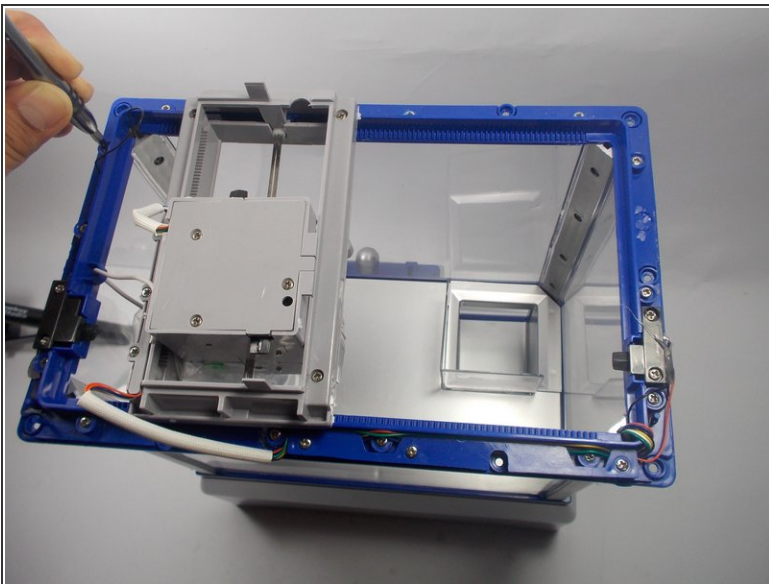
- Turn The Claw machine back to the upright position with controls facing you.

## Step 5



- Remove the top cover of The Claw machine.

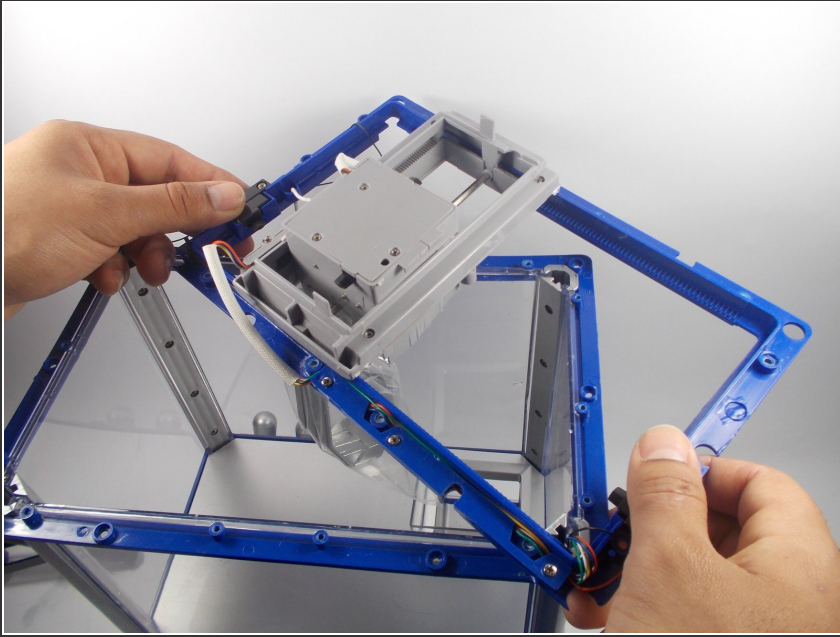
## Step 6



- Remove the ten 6 mm phillips #1 screws from the top flange.

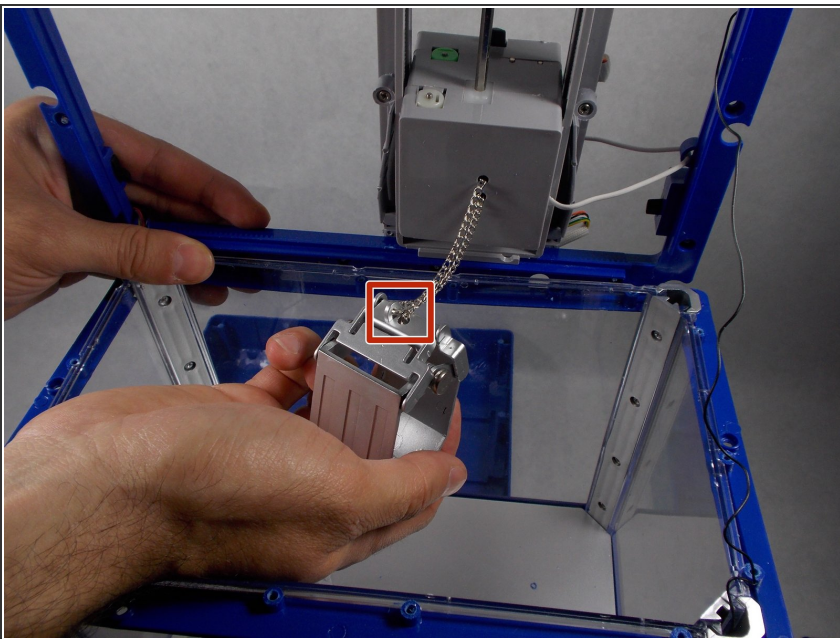


## Step 7



- Lift the flange upward and off to the side of the machine.
- ⓘ There is enough wire connecting the flange to the machine that you will not need to cut the wire. The flange can be moved off to the side of the machine while you are working.
- ⚠ Cutting or ripping out the wire will cause damage to the machine so try not to put much tension on the wire.

## Step 8 — Claw

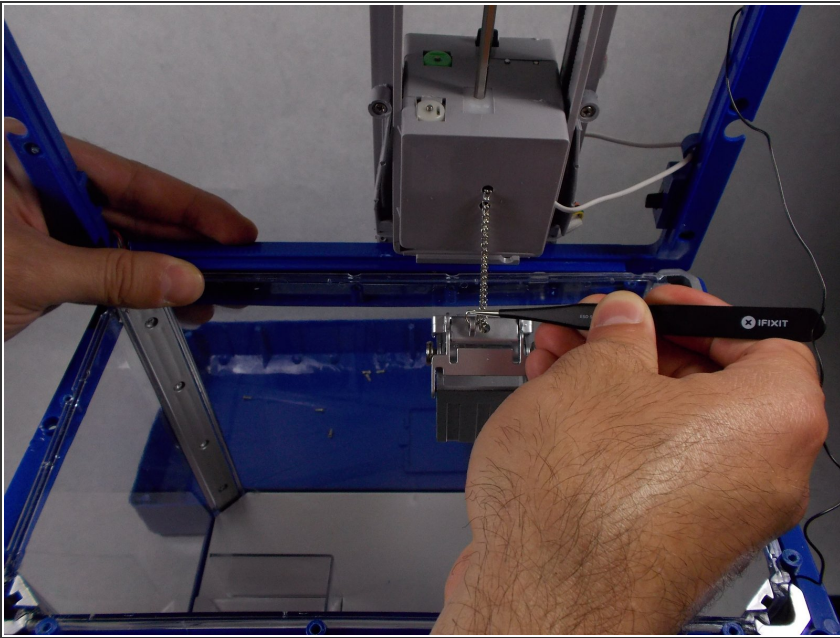


- ⓘ Once you have removed the top cover of the claw you can easily access the claw and you will see

that the claw is attached by two small chains.

- Locate the small rings that attach the chain to the plastic claw.

## Step 9



- Using the precision tweezers or small needle nose pliers, gently widen the small rings enough so that they can be removed from the claw.
- ⚠ Replace the claw one ring at a time. The chain needs to be attached to the new claw in the same configuration. One side of the chain opens the claw and the other side is just a hanging support.

To reassemble your device, follow these instructions in reverse order.