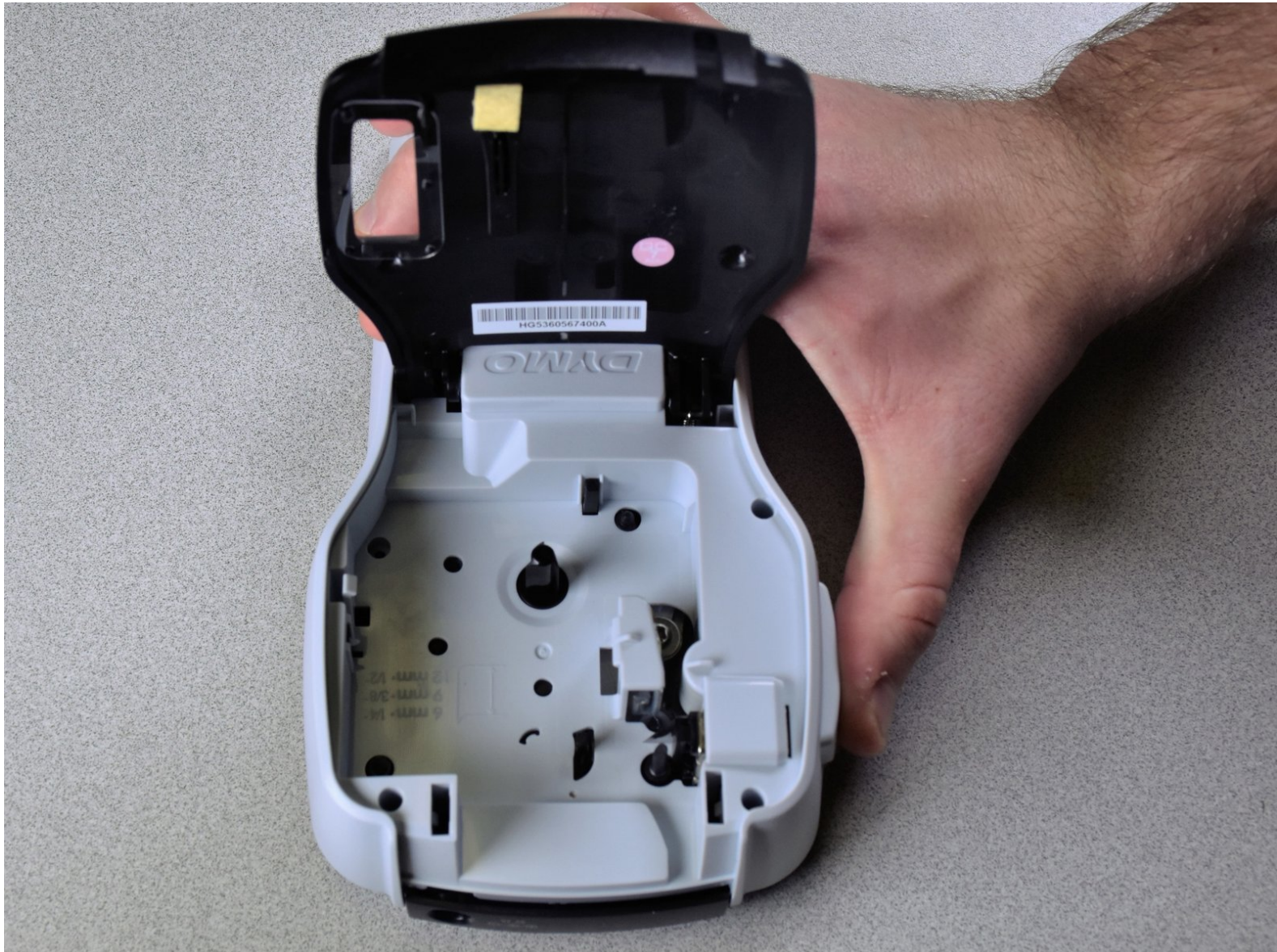




# DYMO LabelManager 160 Keyboard Replacement

This guide provides steps to replace the rubber keypad for your DYMO LabelManager 160.

Written By: Matthew Jenkins



---

## INTRODUCTION

If the DYMO LabelManager 160's keys are unresponsive, you may need to replace the keypad. This guide provides the replacement steps.



### PARTS:

- [Phillips #000 Screwdriver](#) (1)
-

## Step 1 — Batteries



- Place the device face-down to access the battery compartment.

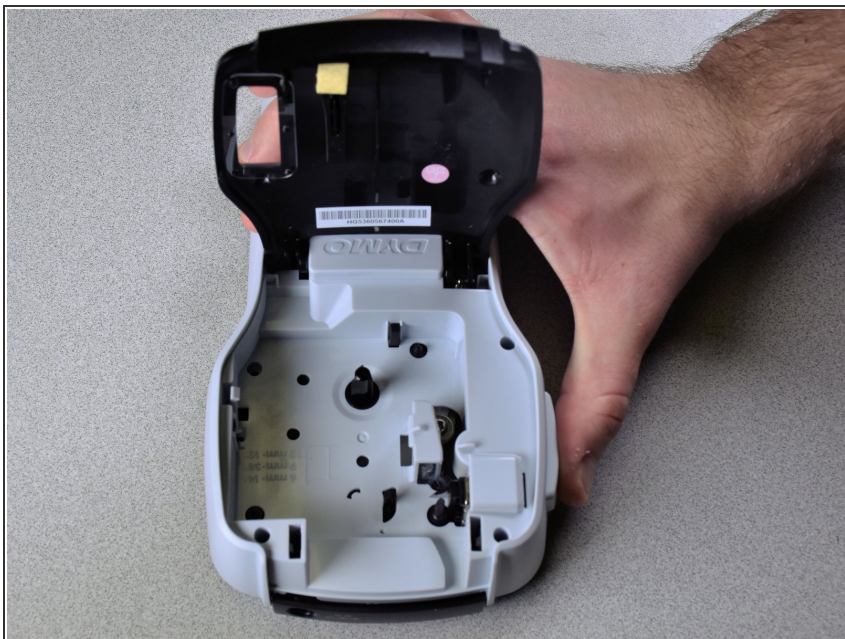
## Step 2



- Remove the compartment cover to reveal the batteries. Remove the 6 old batteries.

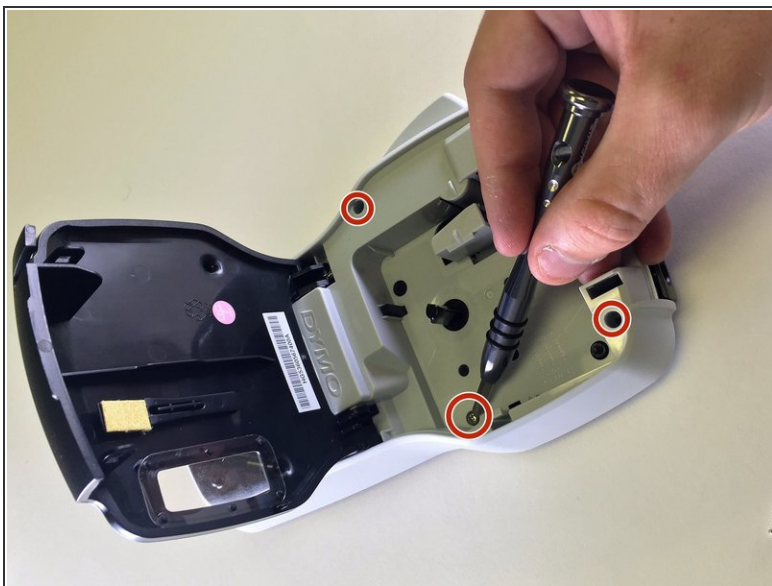


## Step 3 — Keyboard



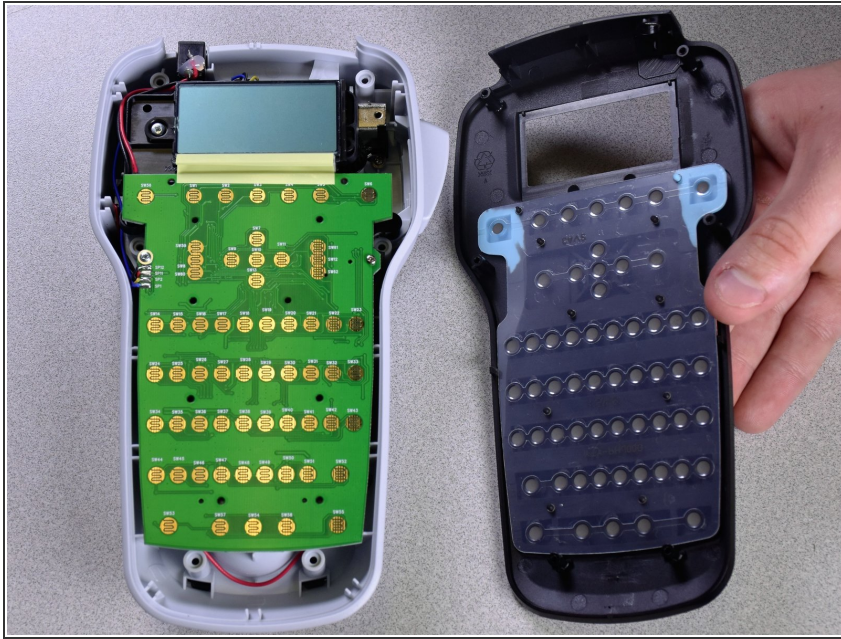
- To open the cartridge compartment, simply lift on the front of the device.

## Step 4



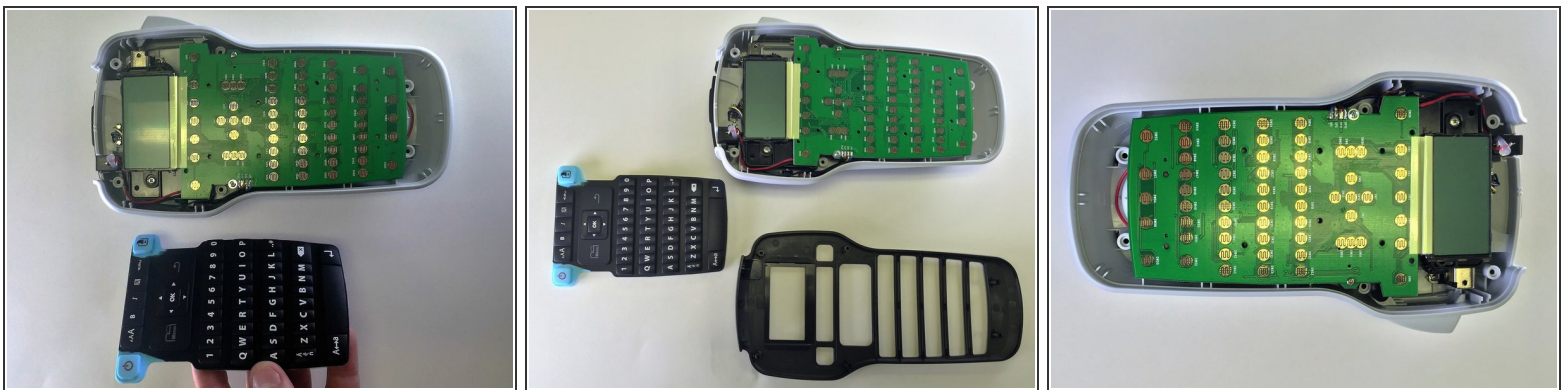
- Using a Phillips #0 screwdriver, remove the four 1.3mm screws from the cartridge compartment and two 1.2mm screws from the battery compartment.

## Step 5



- Using a spudger or other tool, lift and remove the front of the device. This should be done all around the device to ensure the two parts split correctly.

## Step 6



- Gently remove the rubber keyboard from the device.

To reassemble your device, follow these instructions in reverse order.