



Sony Vaio Pro 13 Solid State Drive Replacement

Replacement of SSD

Written By: Alex R



INTRODUCTION

Replacement of SSD



TOOLS:

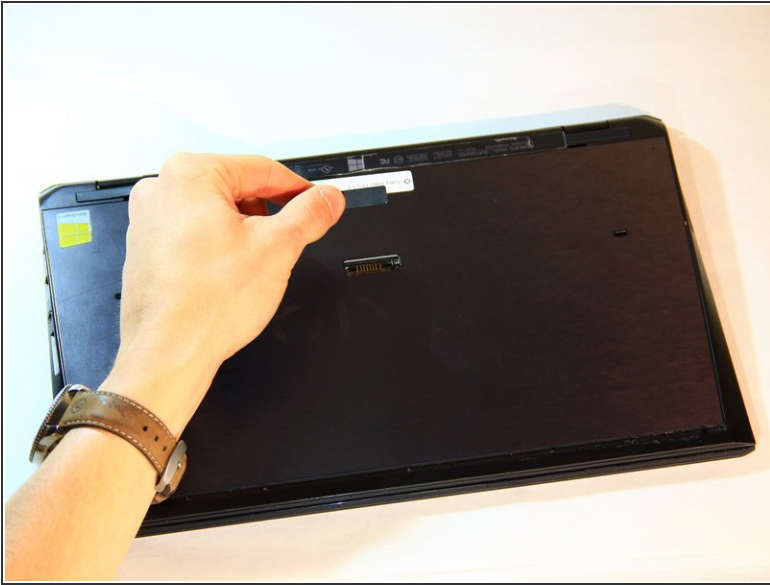
- [Phillips #00 Screwdriver](#) (1)
- [iFixit Opening Tool](#) (1)
- [Phillips #0 Screwdriver](#) (1)



PARTS:

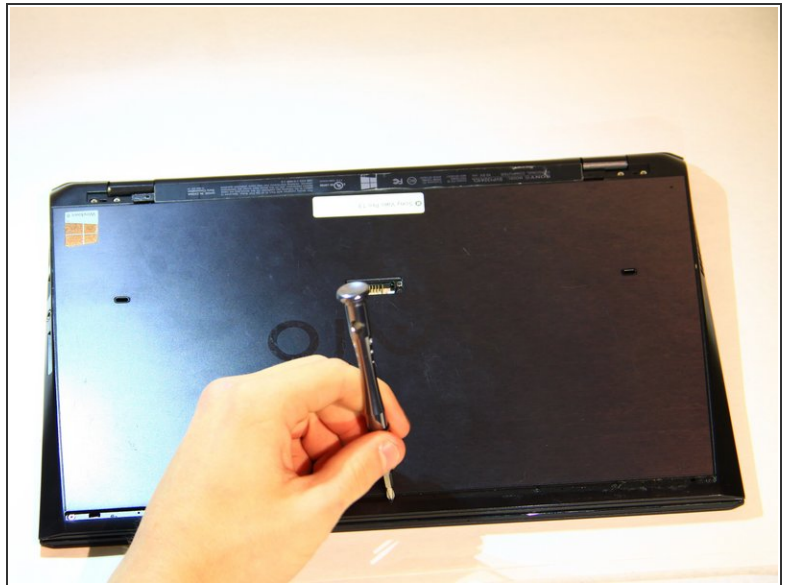
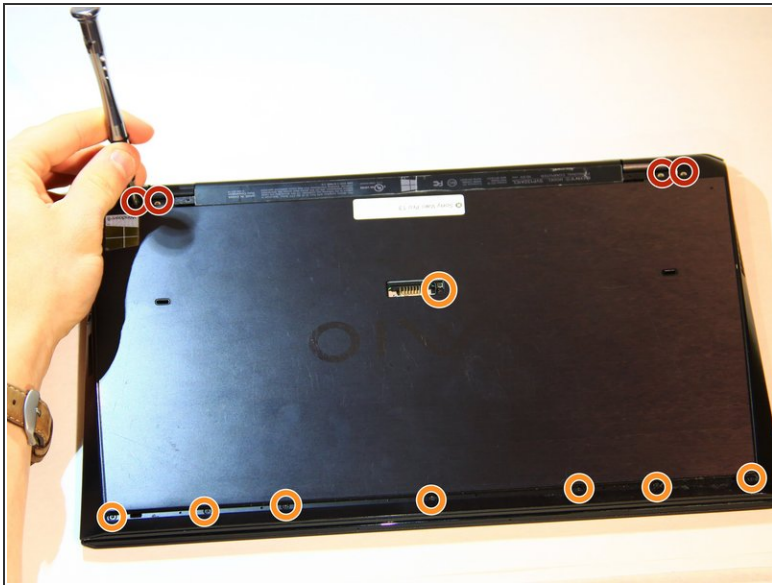
- [Crucial P3 NVMe PCIe M.2 2280SS SSD](#) - solid performance, switching from HDD or SATA to NVMe™ (1)
- [Crucial P3 Plus NVMe PCIe M.2 2280SS SSD](#) - fast Gen4 NVMe™ storage for data-intensive applications (1)
- [Crucial P5 Plus NVMe PCIe M.2 2280SS SSD](#) - professionals, creatives, and hardcore gamers (1)

Step 1 — Bottom Cover



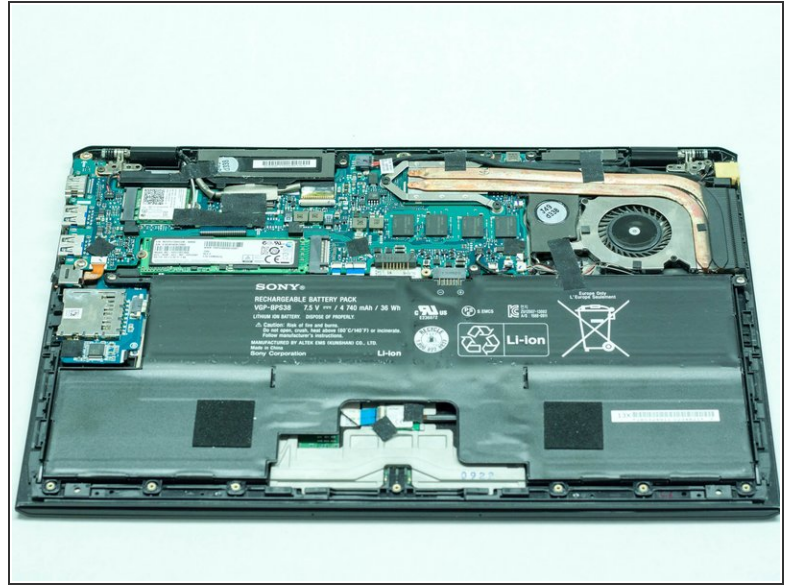
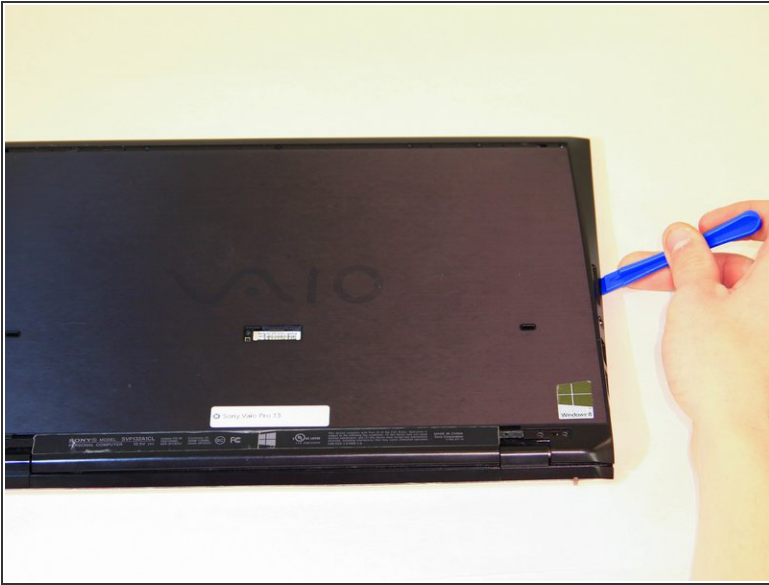
- Remove cover for the extended battery connector. Use your finger nail or a plastic opening tool to remove it.
- Remove the two rubber feet at the back of the computer, these can be removed in the same way.

Step 2



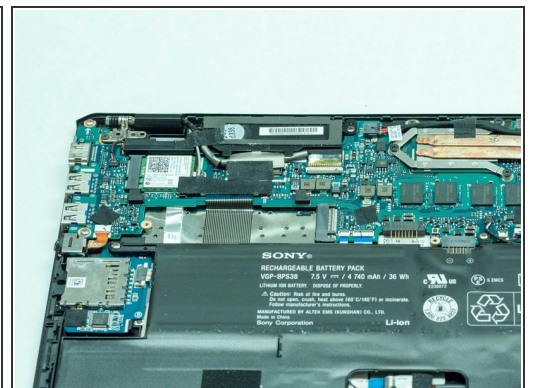
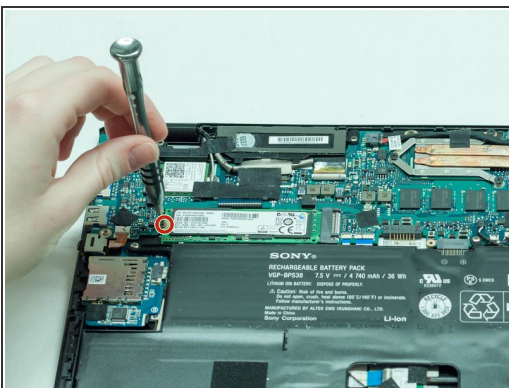
- Remove the four 5.6mm Philips #00 screws located at the top of the computer.
- Remove the eight 3.6mm Philips #00 screws on the base of the computer.

Step 3



- Using a plastic opening tool, pry the plastic casing away from the base of the computer, the remaining clips around the edges can be released using your hands.
- ① Leave the side with the USB and audio port until last, then slide the case out and off, so the audio port doesn't get caught.

Step 4 — Solid State Drive



- Remove the 4mm #0 Philips screw holding down the SSD
- Lift the SSD up and slide out of the slot

To reassemble your device, follow these instructions in reverse order.