



JBL Flip 2 Battery Replacement

This guide will walk you through replacing the battery for this device.

Written By: Jonathan Wear



INTRODUCTION

This guide will walk you through from taking apart the device, disconnecting all the cables inside and taking apart the battery for replacement.

There are two versions of the battery in this device; one with three wires and one with five wires. The best way to tell which type of battery you need is to disassemble your device before ordering a replacement battery.



TOOLS:

- [Spudger](#) (1)
- [Phillips #1 Screwdriver](#) (1)
- [64 Bit Driver Kit](#) (1)
- [Tweezers](#) (1)



PARTS:

- [JBL Flip 2 Replacement Battery](#) (1)

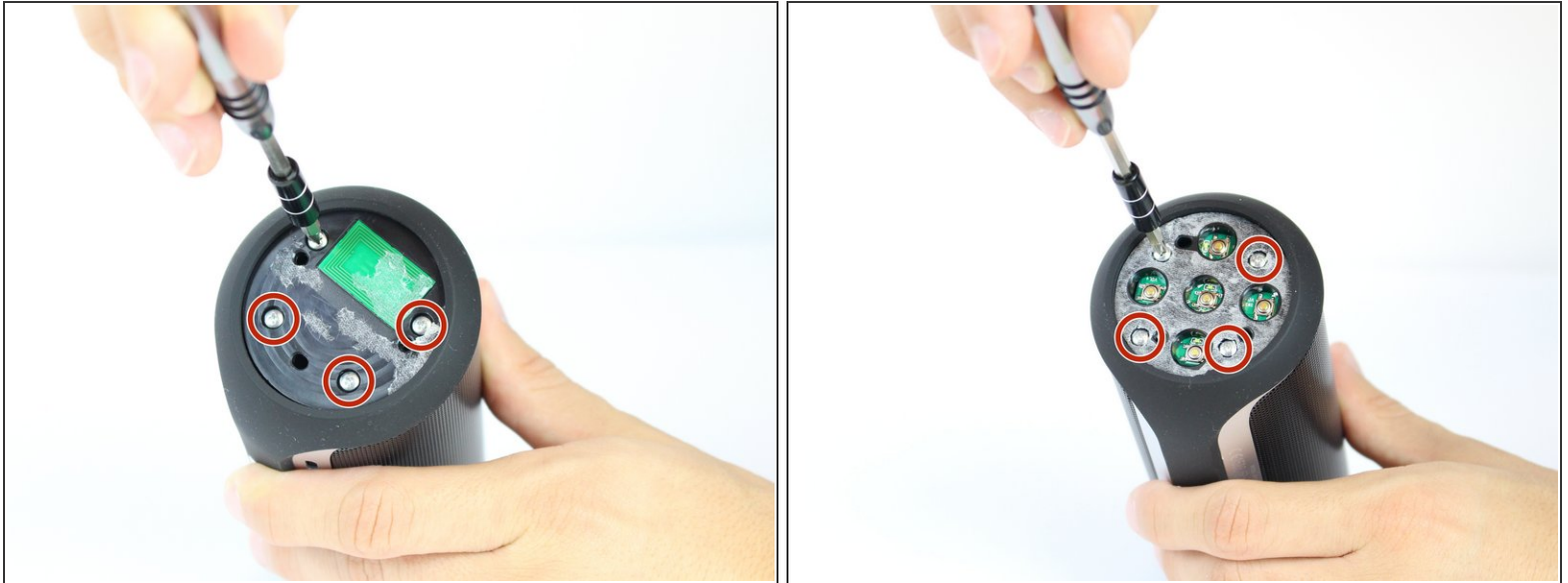
Step 1 — JBL Flip 2 Outer Case Disassembly



- Begin by removing the rubber caps on both sides of the JBL Flip 2 by using the black spudger to get in between the creases.

⚠ Be very careful when removing the NFC rubber cap. There is a chip that is glued to the inside of the rubber cap. So, peel the rubber cap off slowly and remove the chip on the inside while peeling the rubber cap off.

Step 2



- Remove the eight 7.0 mm Phillips #1 screws on both sides of the JBL Flip 2.

Step 3



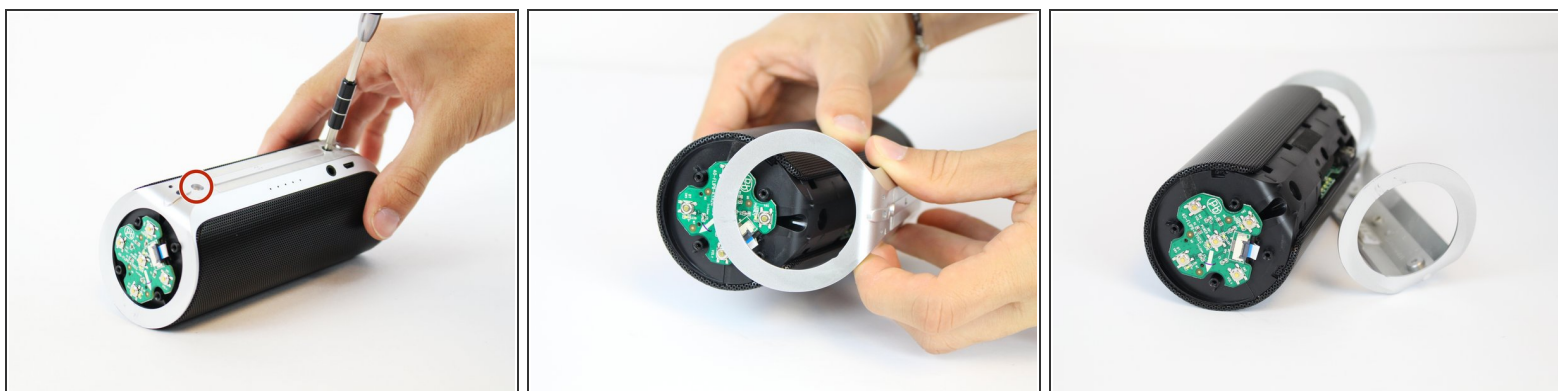
- The NFC chip is glued onto the side of the device. Use the black spudger to separate the mic from the surface.
- ⚠ Be careful not to sever the wire connecting the nfc chip to the inside of the device.
- Gently slide the NFC chip into the device through the slot that the wire comes from.

Step 4



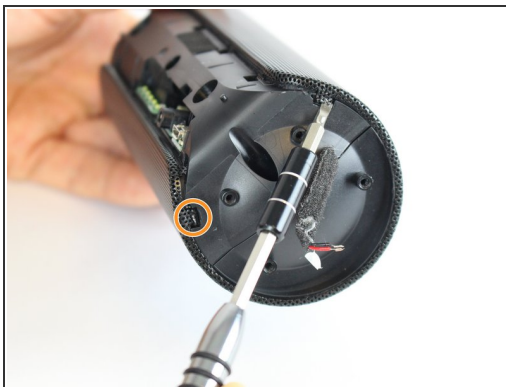
- Peel the black rubber piece from one end to the other.

Step 5



- Remove the two 7.0 mm Phillips #1 screws.
- Carefully detach the silver plastic cover by pulling both ends off.
- ⚠ Pull both ends at the same time with the same amount of force to prevent the cover from breaking.
- Separate the silver plastic piece by pulling it off from the middle.

Step 6



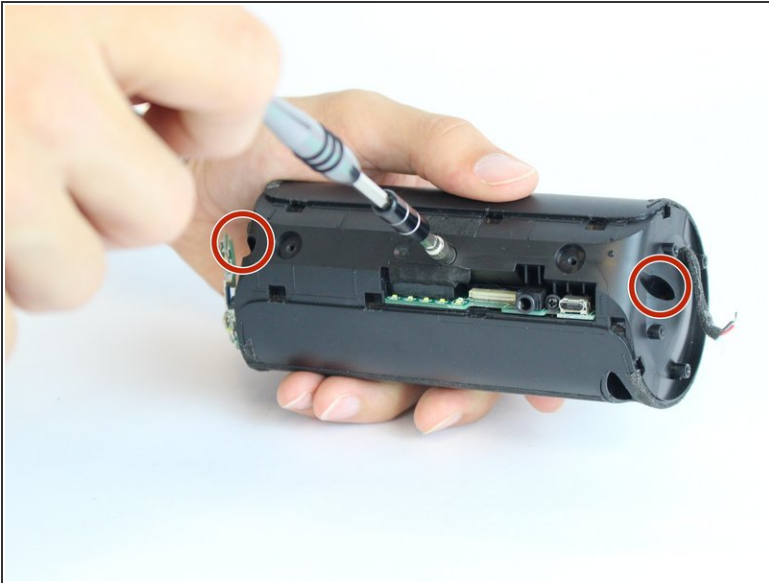
- Using a flat-head screwdriver or spudger, pry out the 8 metal nibs on the back side of the speaker.
- Repeat the same process for the 4 remaining metal nibs (two on each end).

Step 7



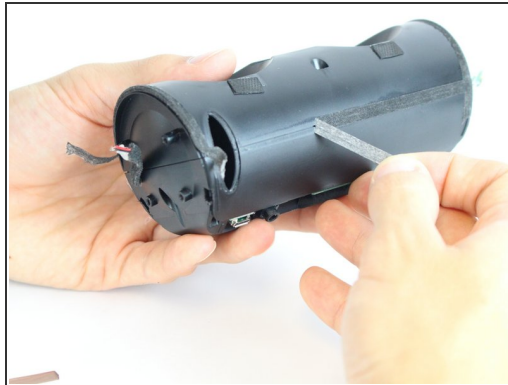
- Expand the metal casing and carefully slide it off the speaker.

Step 8



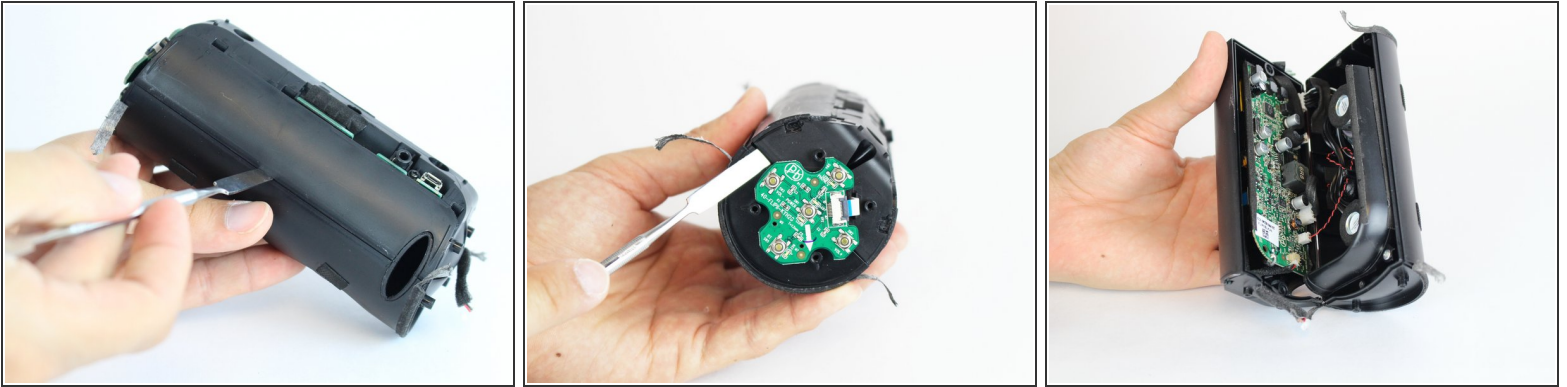
- Using the driver adapter, first insert the #4 socket into the driver; followed by the #1 Philip's head bit in order to reach the three 13.0 mm screws.

Step 9



- Using the classic spudger, get underneath the black tape strips found on both side of the device.
- After lifting a portion of the tape off of the device, gently peel the tape off of the device, making sure to keep it intact.
- There is another piece of tape on the side of the device with the control buttons. Lift the tape with the classic spudger and then peel the rest of the tape off.

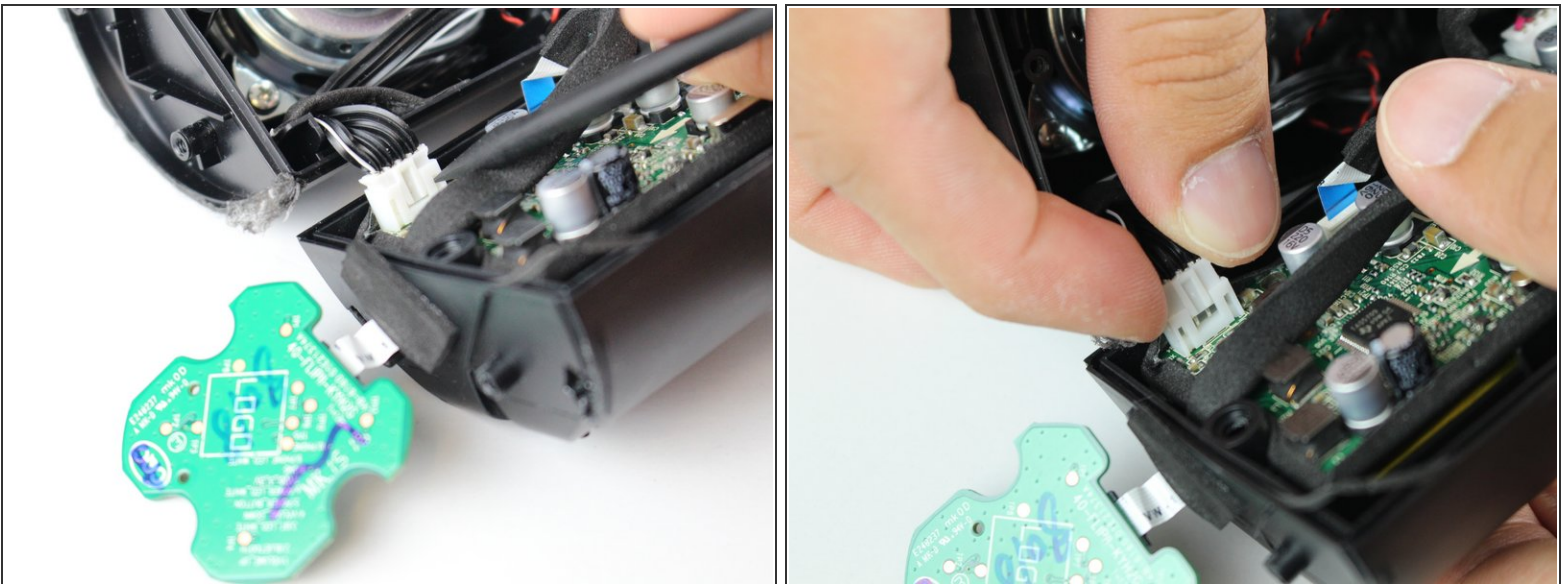
Step 10



- Wedge a spudger between the two halves where the tape was to pry the device open.

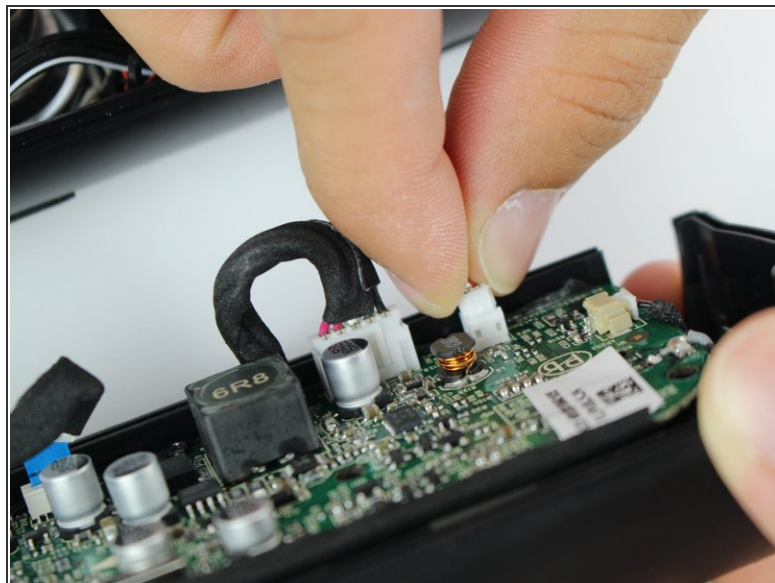
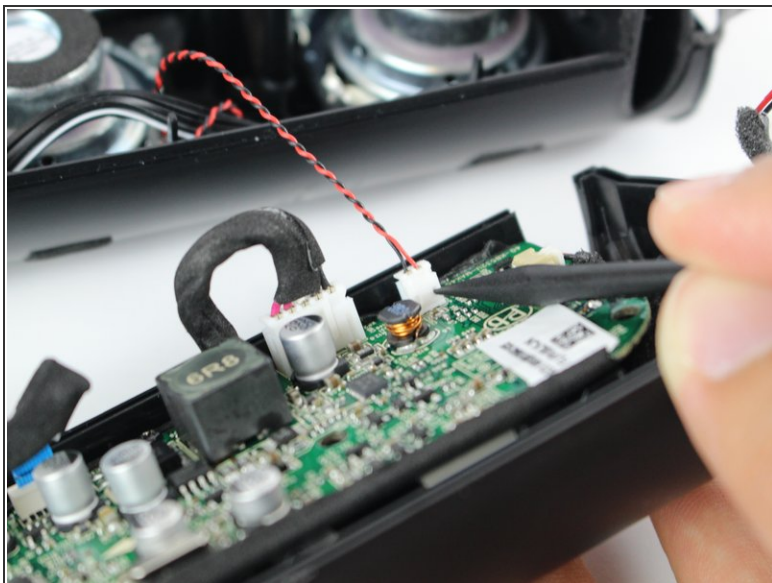
⚠ When working with electronics, it's important to choose a tool that's ESD-safe to avoid accidental damage to the device. The regular black nylon spudger or a plastic opening tool should be used whenever possible.

Step 11



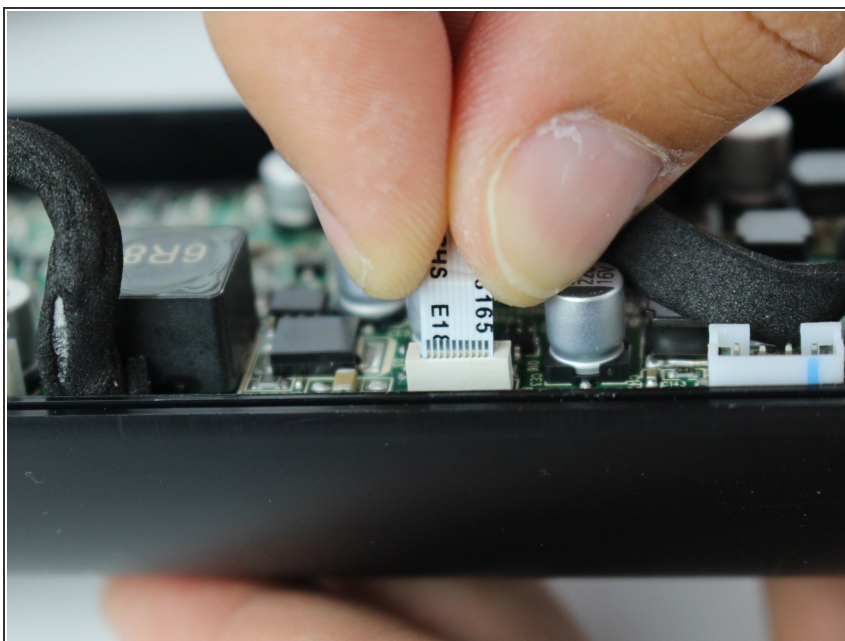
- Use the black spudger to disconnect the speaker cord from it's socket.

Step 12



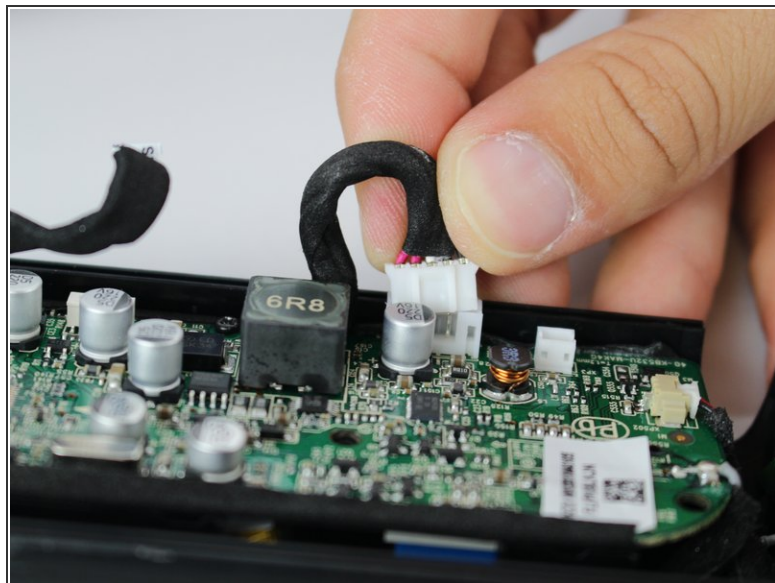
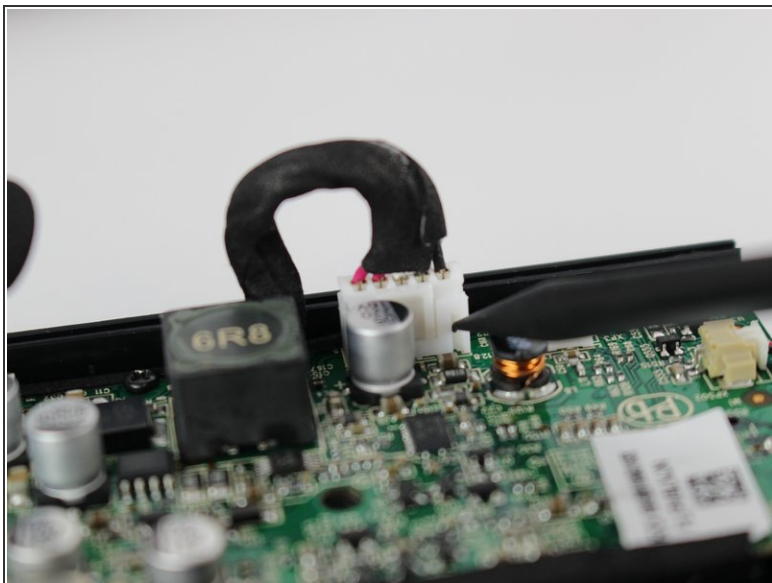
- Use the black spudger to disconnect the auxiliary wire from its socket.

Step 13



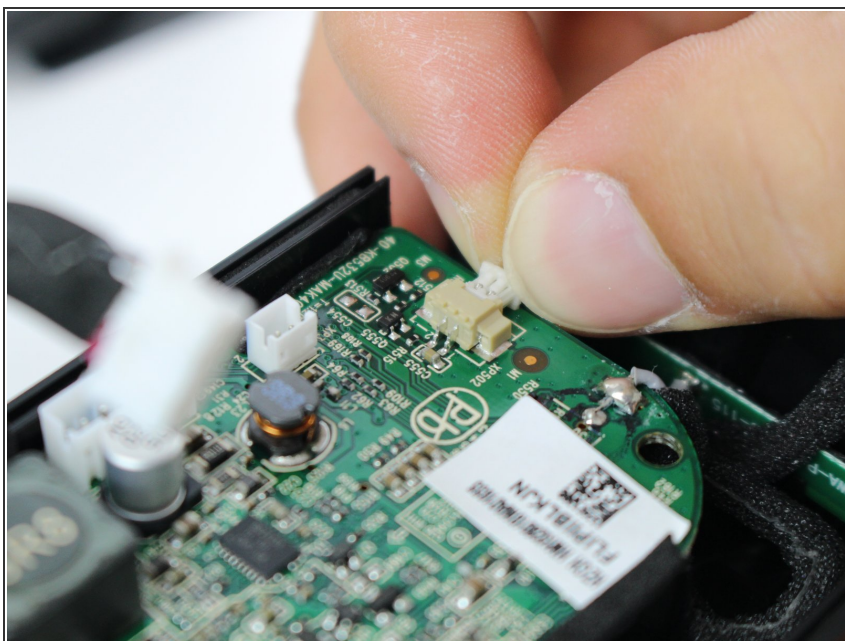
- Carefully remove the cable connecting the control chip to the motherboard.

Step 14



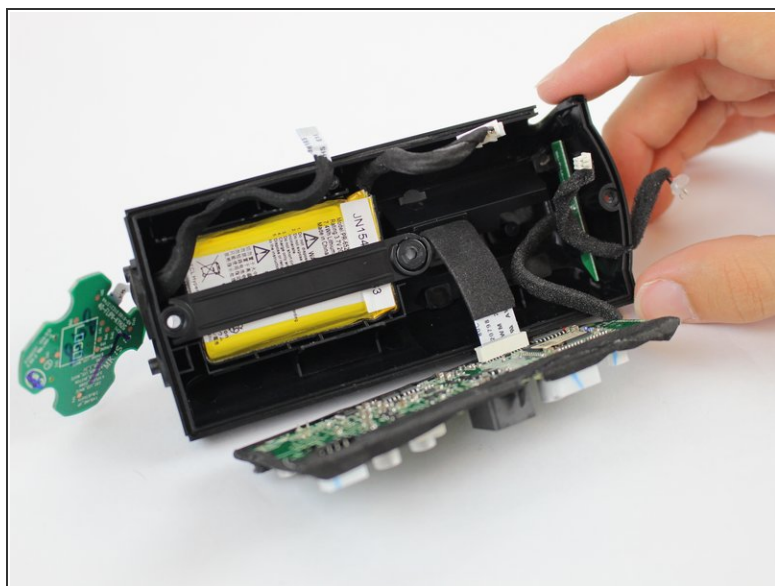
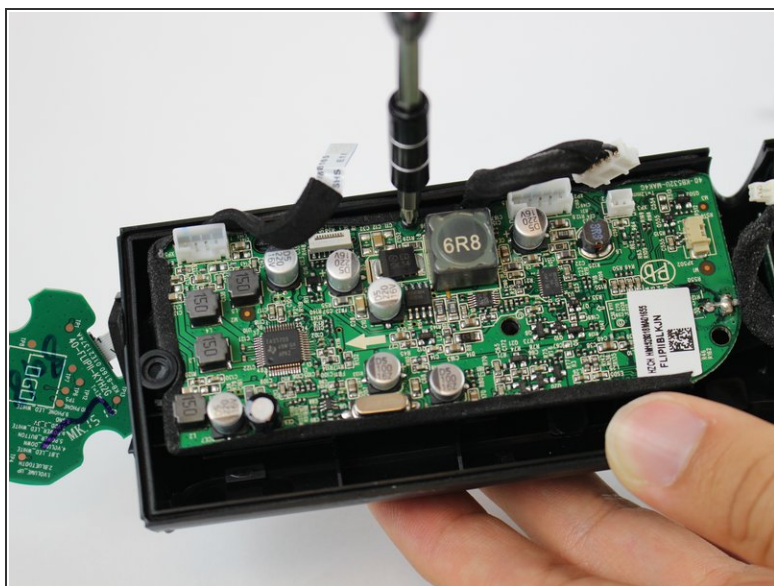
- Using the black spudger, carefully remove the cord connecting the battery to the motherboard.

Step 15



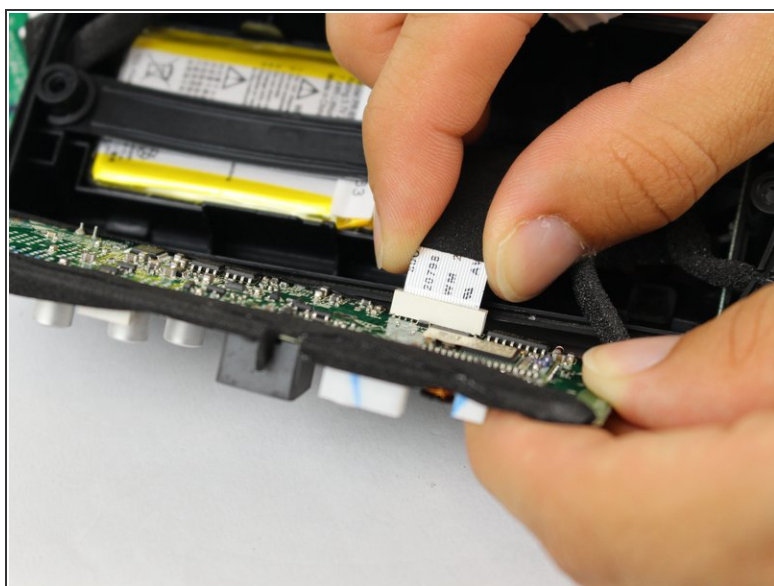
- Carefully remove the cable connecting the nfc chip to the motherboard.

Step 16 — Battery



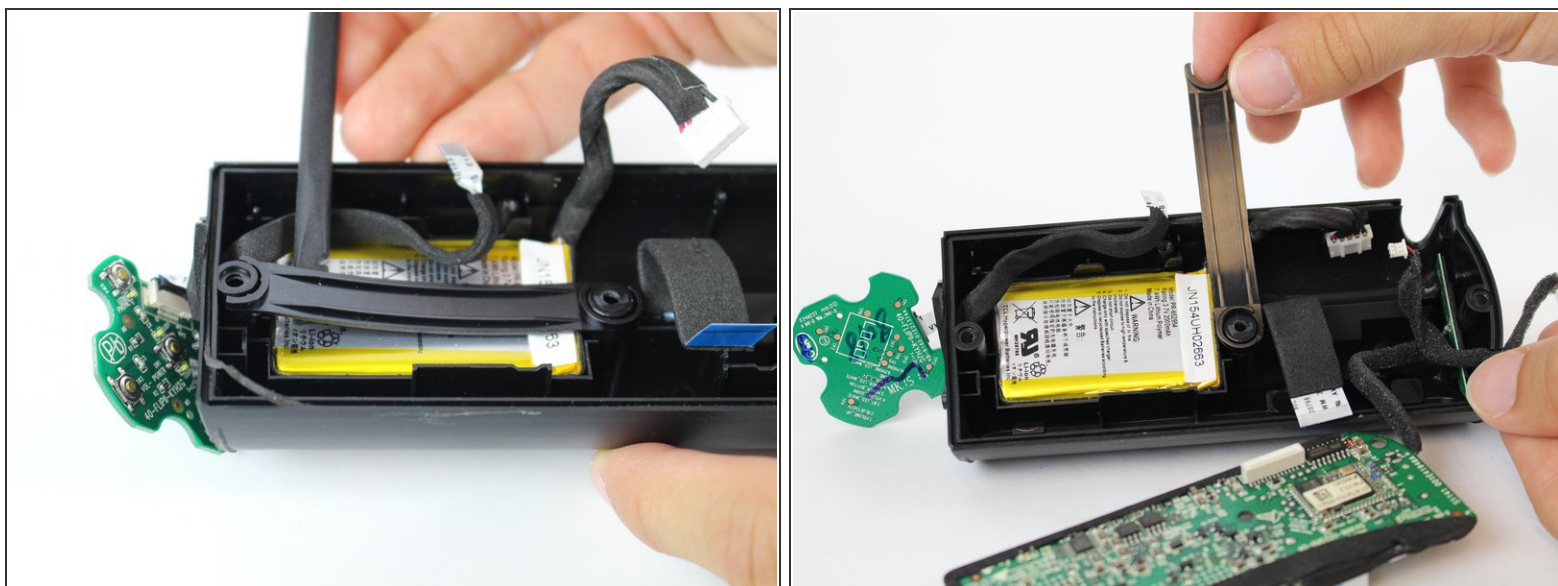
- Remove the one 7.0 mm Phillips #1 screw attaching the motherboard to the casing.
- Lift the motherboard out of the case to reveal the battery.

Step 17



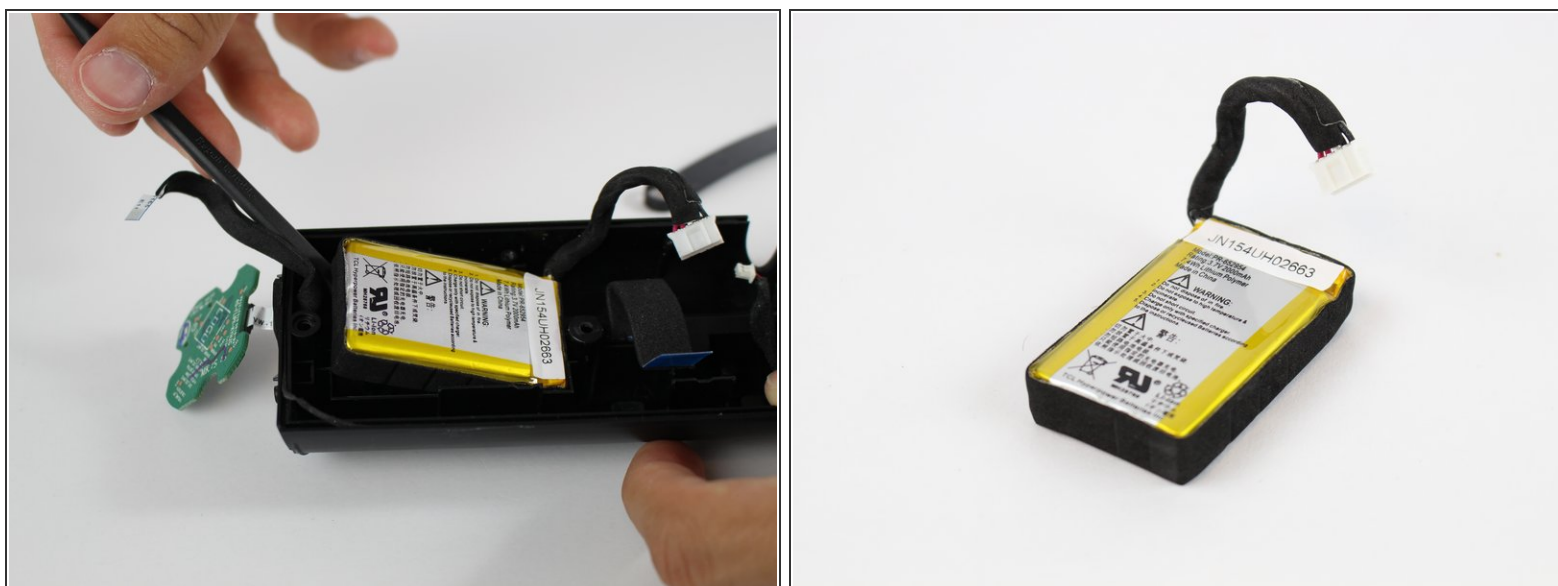
- Remove the cord that connects the ports board to the motherboard.
- Put the motherboard to the side.

Step 18



- Using the black spudger, loosen the brace holding in the battery.
- To remove the brace, turn it 90 degrees clockwise and lift it up from its socket.

Step 19



- Using the black spudger, loosen the battery and remove.

To reassemble your device, follow these instructions in reverse order.