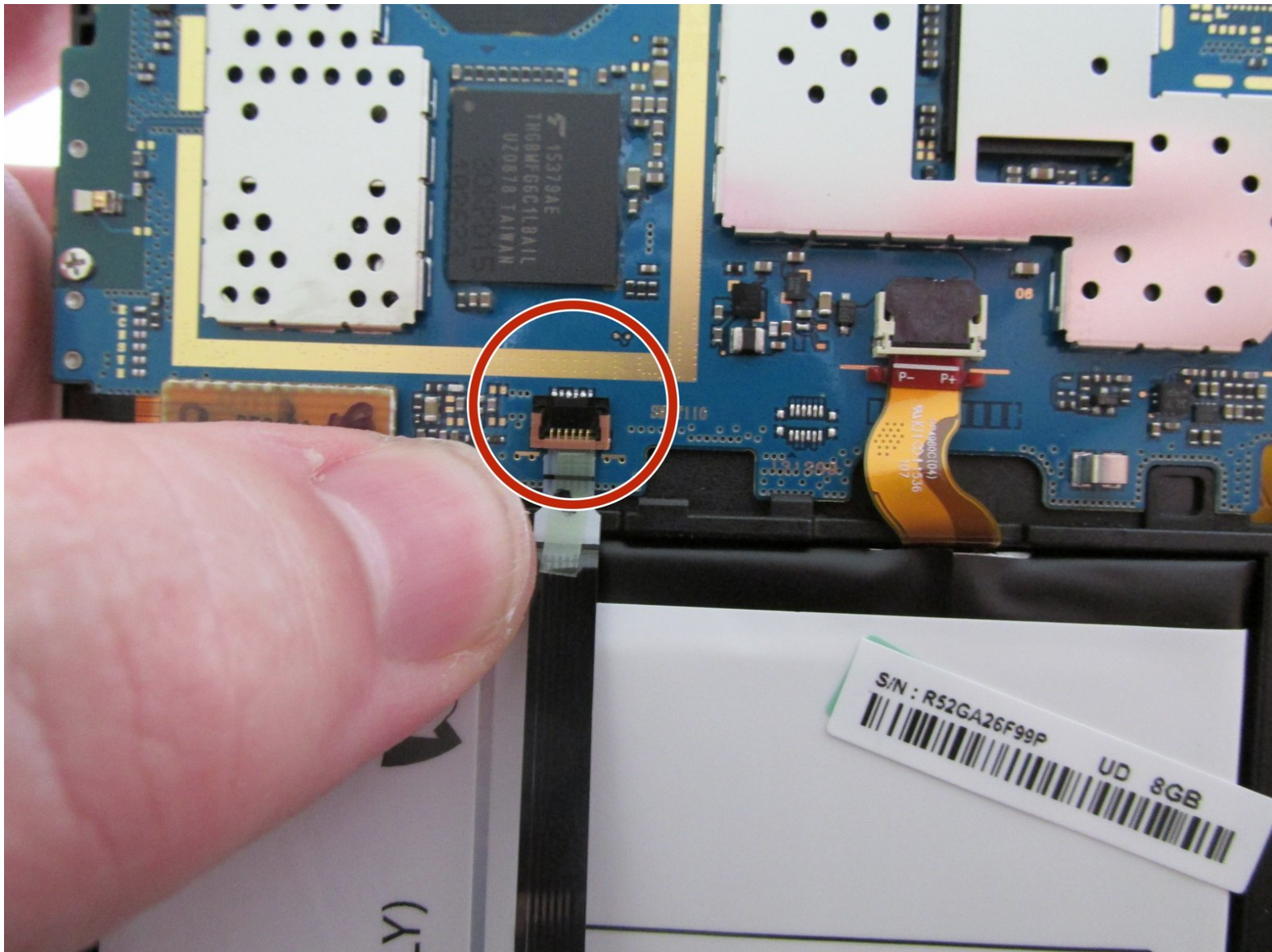




Samsung Galaxy Tab 3 Lite Motherboard Replacement

This replacement guide will walk you through how to replace the motherboard on your Samsung Galaxy Tab 3 Lite.

Written By: Patricia Laird



This document was generated on 2020-11-13 05:58:14 PM (MST).

INTRODUCTION

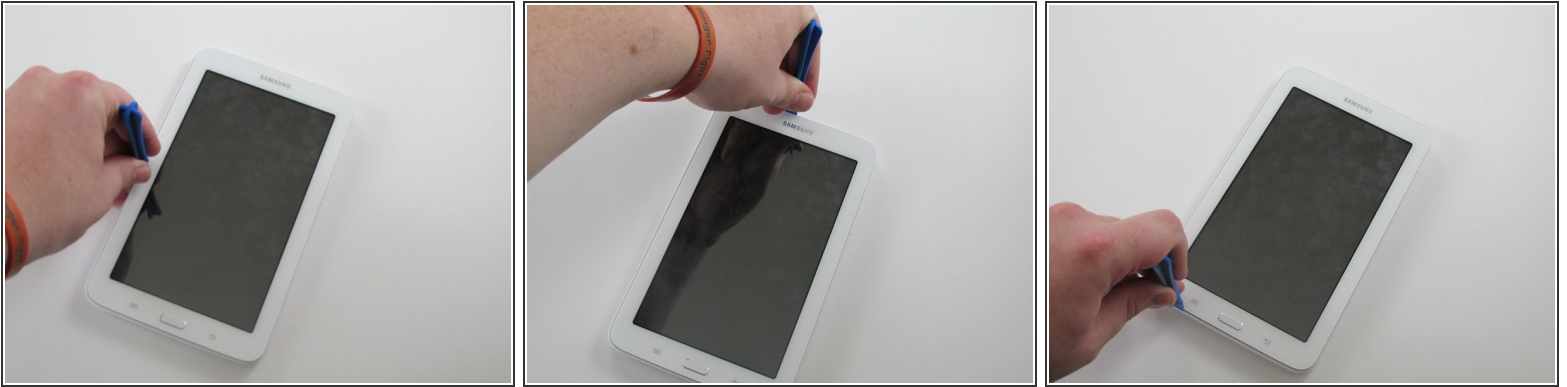
This replacement guide will walk you through how to replace the motherboard on your Samsung Galaxy Tab 3 Lite. Before doing this, you will need to remove the back case of your tablet first. The guide for how to do that is also included here.



TOOLS:

- [iFixit Opening Tools](#) (1)
 - [Precision Tweezers Set](#) (1)
 - [Phillips #000 Screwdriver](#) (1)
-

Step 1 — Rear Case



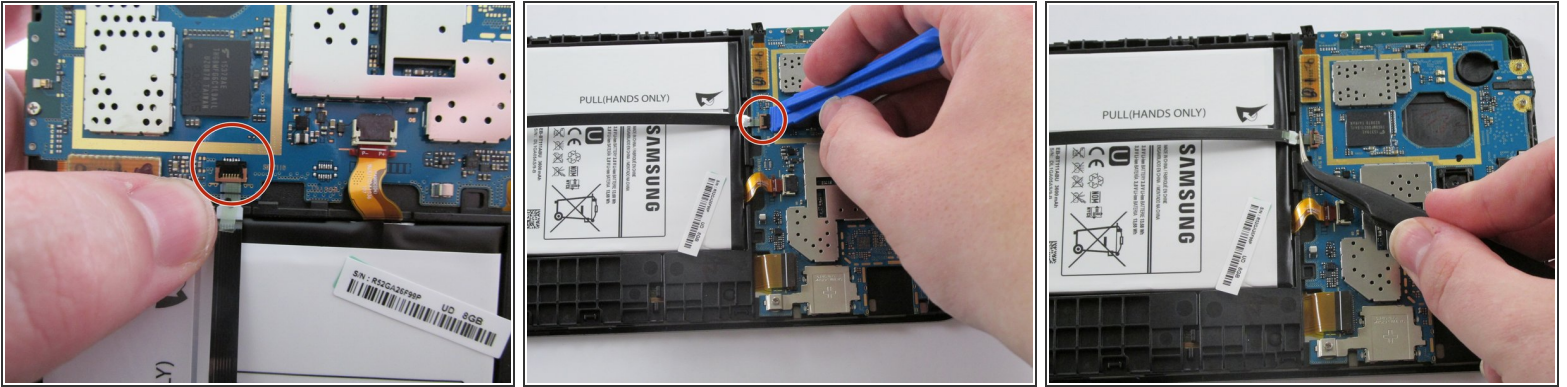
- Using a plastic opening tool, wedge in the seam between the screen and the case.
- Rock the tool by moving it towards and away from the middle of the screen, trying to separate the tape holding the screen and case together.
- This is a long process, so don't try and rush it. Also, be careful about applying pressure.

Step 2



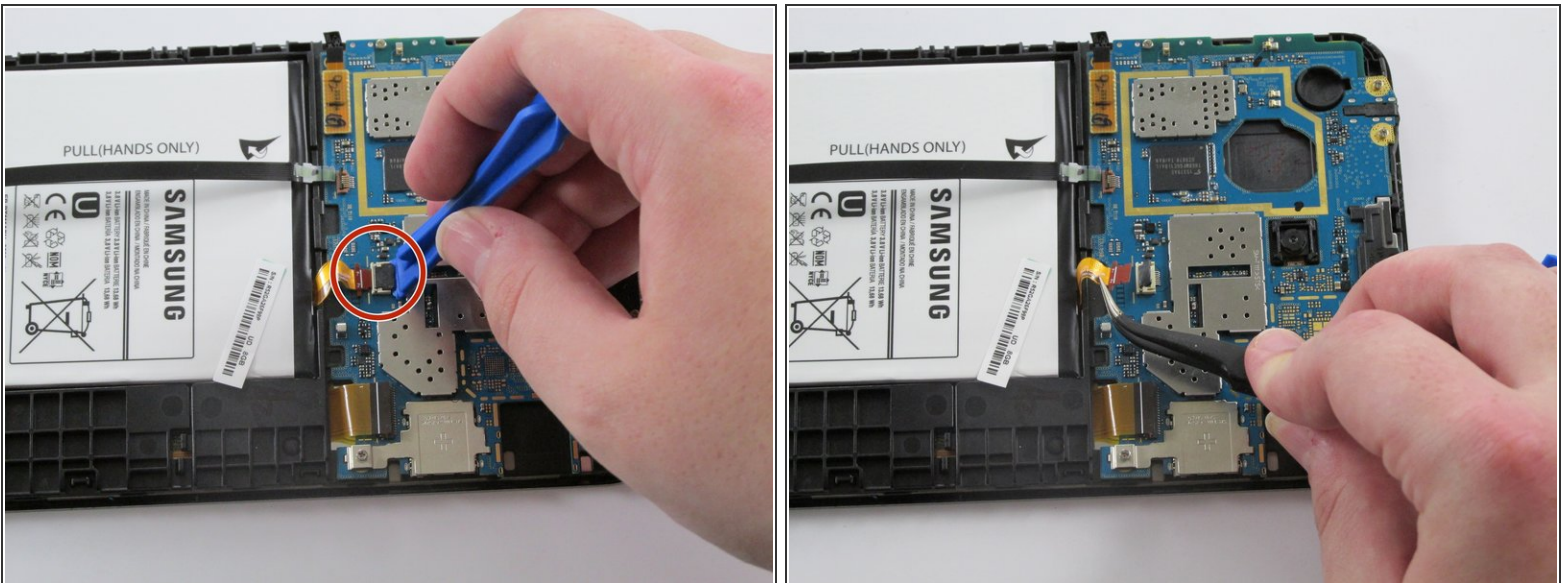
- After separating the tape holding the screen and case together, slowly start taking the screen off the case from the opposite side of the side with the buttons

Step 3 — Motherboard



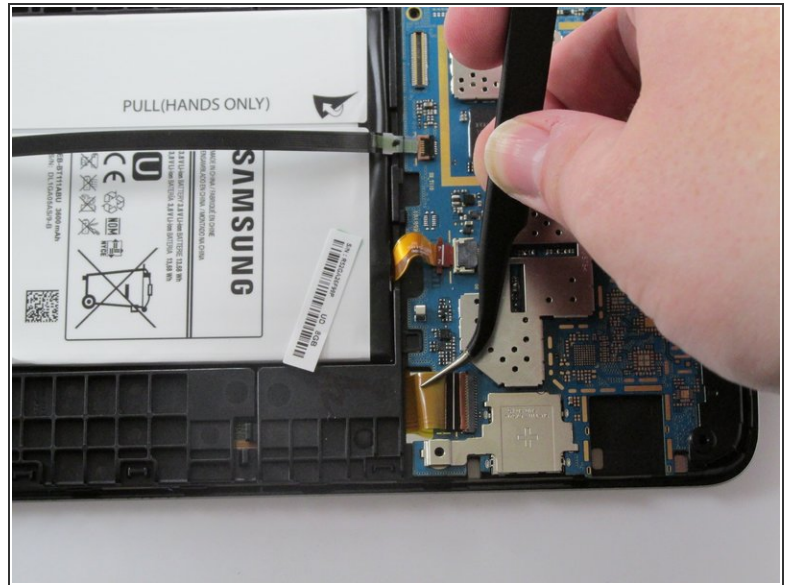
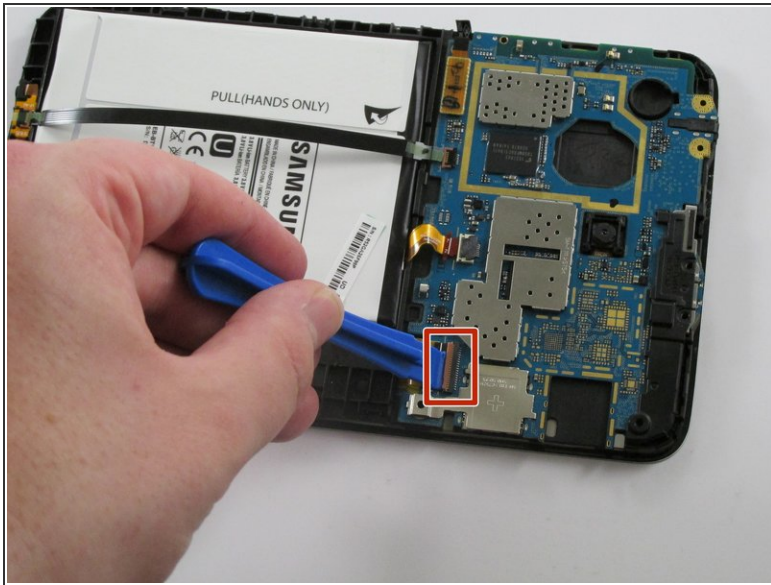
- Use a plastic opening tool to lift up the zero insertion force (ZIF) connector holding down the ribbon cable.
- Use the precision tweezers to gently pull the ribbon cable out of the ZIF connector.

Step 4



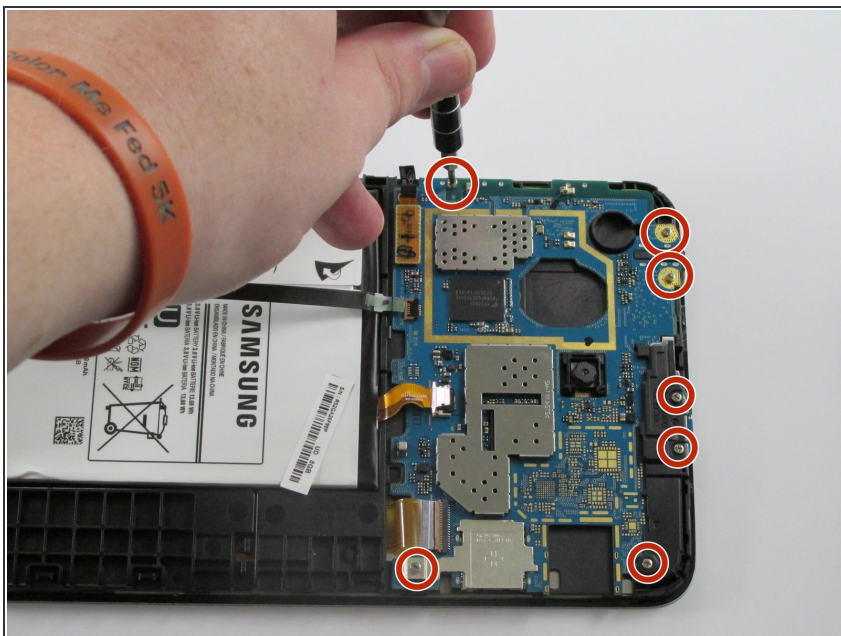
- Use the plastic opening tool to lift up the zero insertion force (ZIF) connector holding down the battery ribbon cable.
- Use the precision tweezers to remove the ribbon cable from the ZIF connector.

Step 5



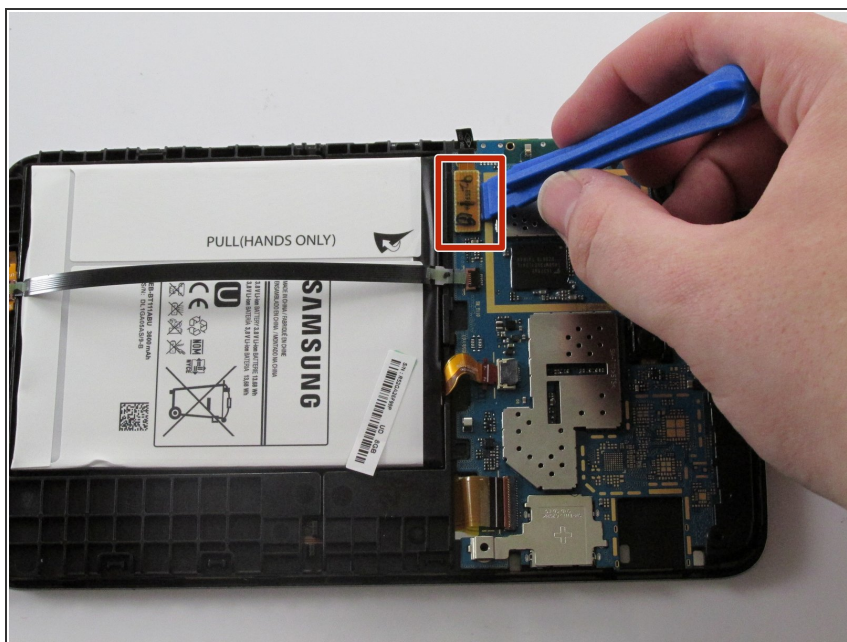
- Use the plastic opening tool to lift up the zero insertion force (ZIF) connector holding down the battery ribbon cable.
- Use the precision tweezers to remove the ribbon cable from the ZIF connector.

Step 6



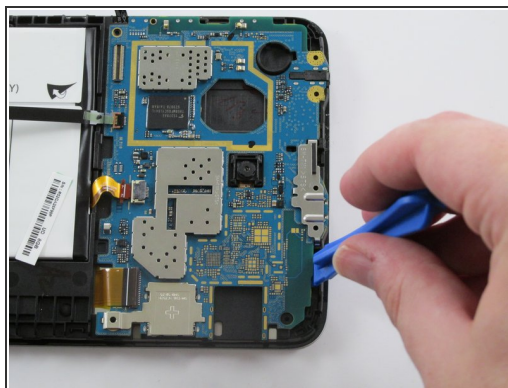
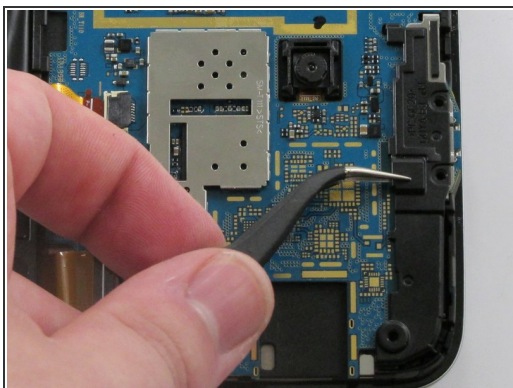
- Remove the seven 4mm Phillips J000 screws holding the motherboard in place.

Step 7



- Use the plastic opening tool and gently pry up the tab holding the motherboard in place.

Step 8



- Use the precision tweezers to remove the black plastic corner on top of the motherboard.
- Use the plastic opening tool to pull the motherboard off the case.

To reassemble your device, follow these instructions in reverse order.