



Black and Decker WP900 Exterior Casing Replacement

Is your device deteriorating externally? This guide will help you replace the old casing with a new one.

Written By: David Hutchings



INTRODUCTION

This page gives instructions for disassembling the Black and Decker WP900 6-Inch Orbital Waxer and Polisher to where the external casing can be removed from all internal workings.

TOOLS:

- [Phillips #1 Screwdriver](#) (1)
 - [iFixit Opening Tools](#) (1)
 - [Flathead 3/32" or 2.5 mm Screwdriver](#) (1)
-

Step 1 — Exterior Casing



- Using the plastic tool, detach the handle tab as shown.

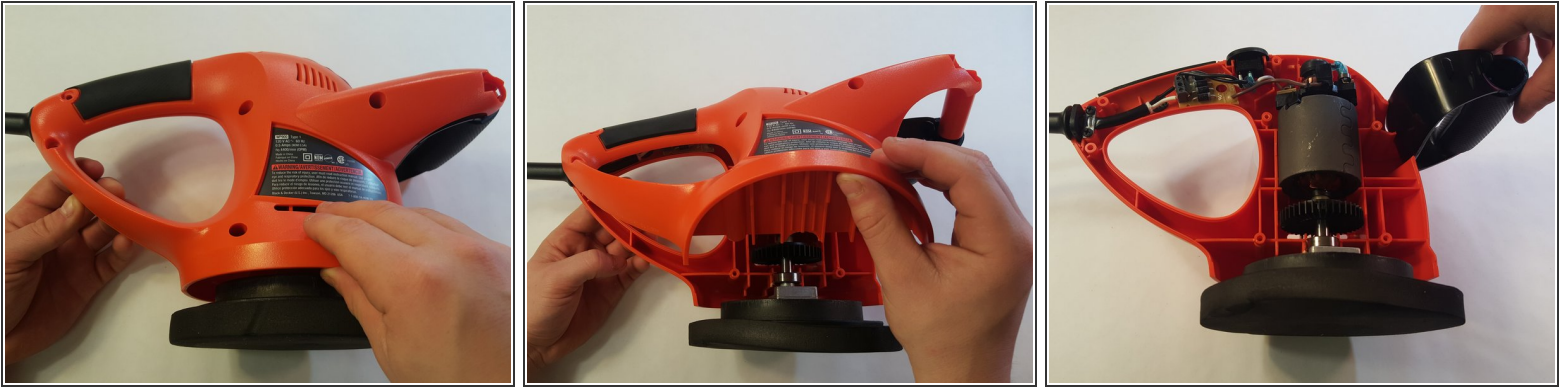
 Make sure the device is unplugged.

Step 2



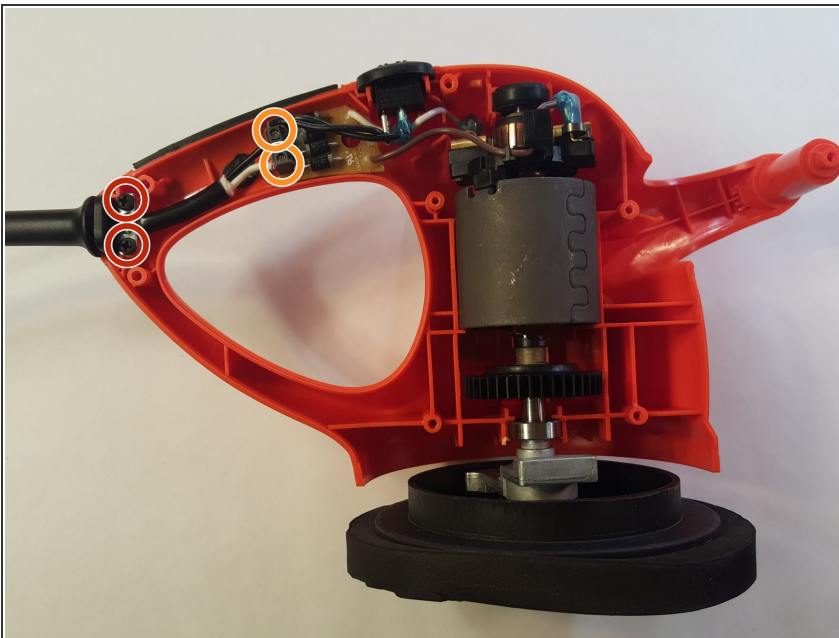
- Using the Phillips #1 screwdriver, unscrew all of the screws. There should be 8-30mm screws to remove.
- Be sure to keep track of where each screw was placed in the device for later reassembly.

Step 3



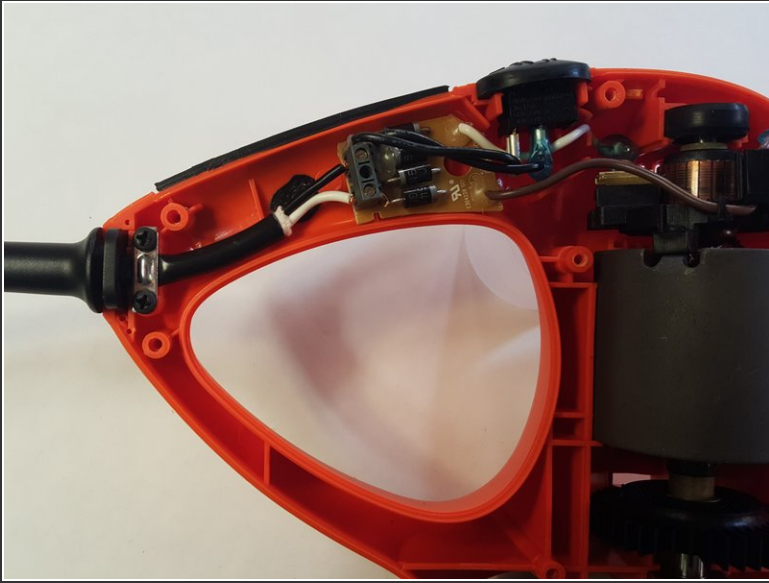
- Remove the back panel of the external casing, leaving all internal components resting in the front panel.
- Remove the black handle from the main external casing.

Step 4



- Using the Phillips #1 screwdriver, remove the two 22mm screws.
- ⓘ The metal bracket will detach with the two screws.
- Using the Flathead 3/32" screwdriver, remove two 22mm screws.

Step 5



- Gently pull the power cord out from the control module.

⚠ Remember, when reassembling the device, the black wire should be on the top.

Step 6



- Firmly grasping the motor dislodge the internal components from the frontal external casing.
- Once the motor has been removed, the external casing can now be replaced.

To reassemble your device, follow these instructions in reverse order.