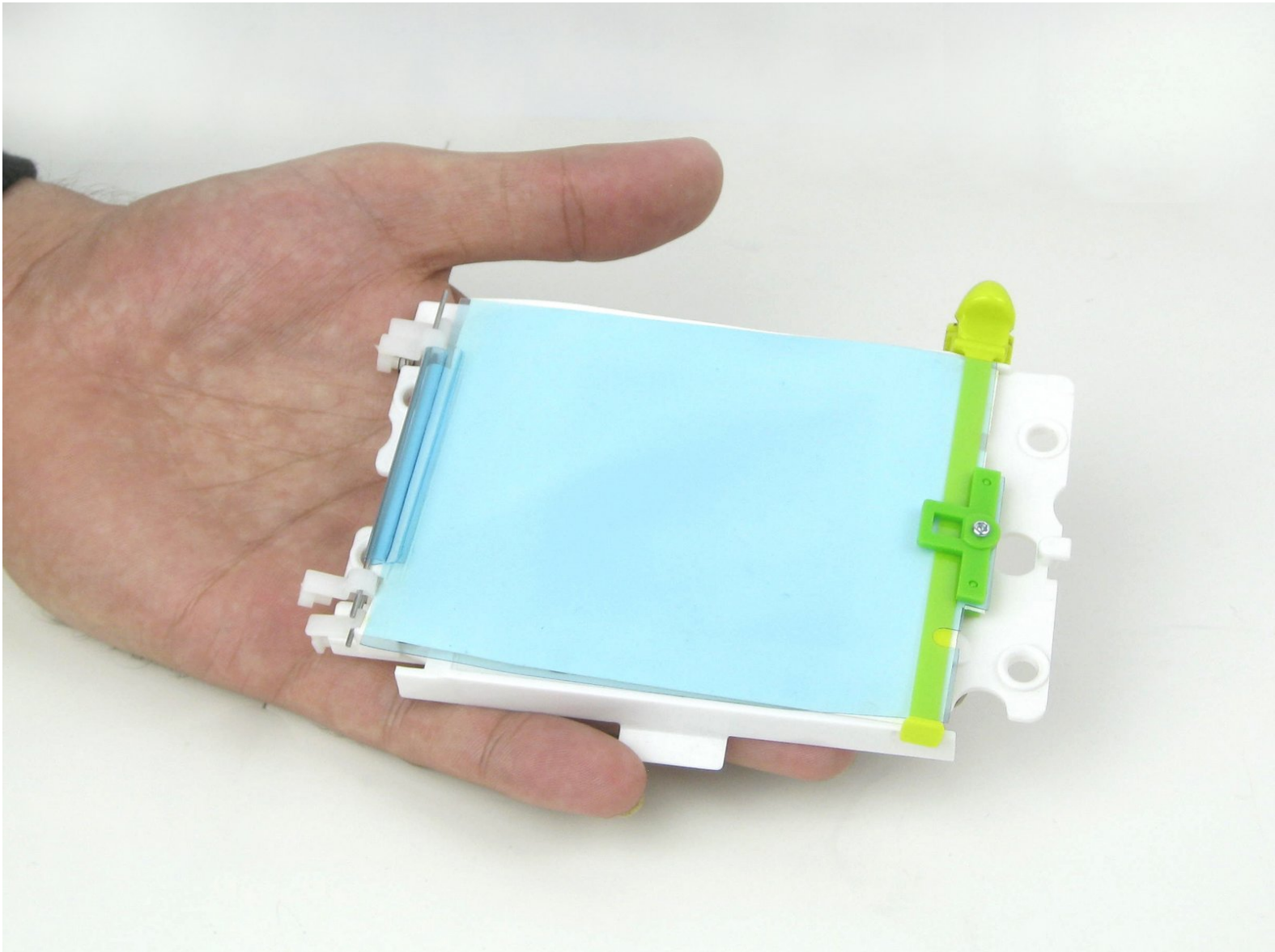




LeapFrog Scribble and Write Display Screen Replacement

Replace the display screen of the LeapFrog Scribble and Write.

Written By: Shang



INTRODUCTION

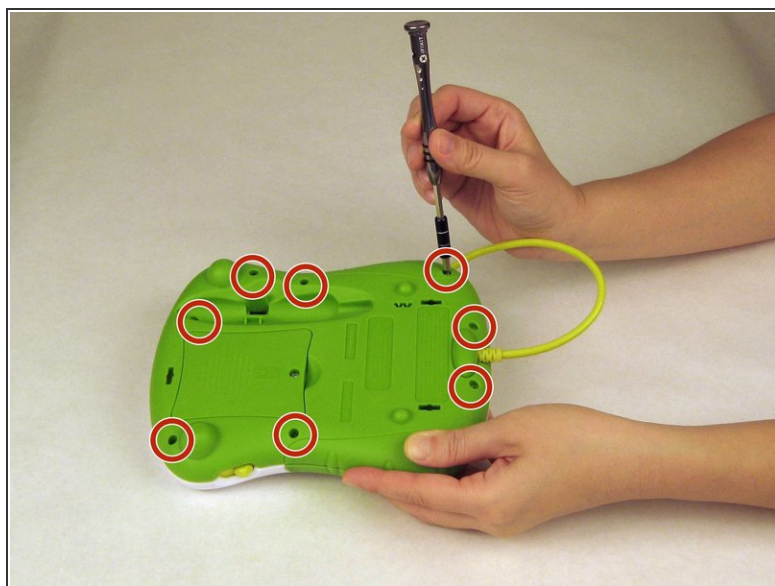
Your display screen may be unresponsive to the touch of your toy's stylus pen. Your toy may also display the wrong input. This could be happening because of a build up of debris. Your display screen will need to be cleaned or replaced.



TOOLS:

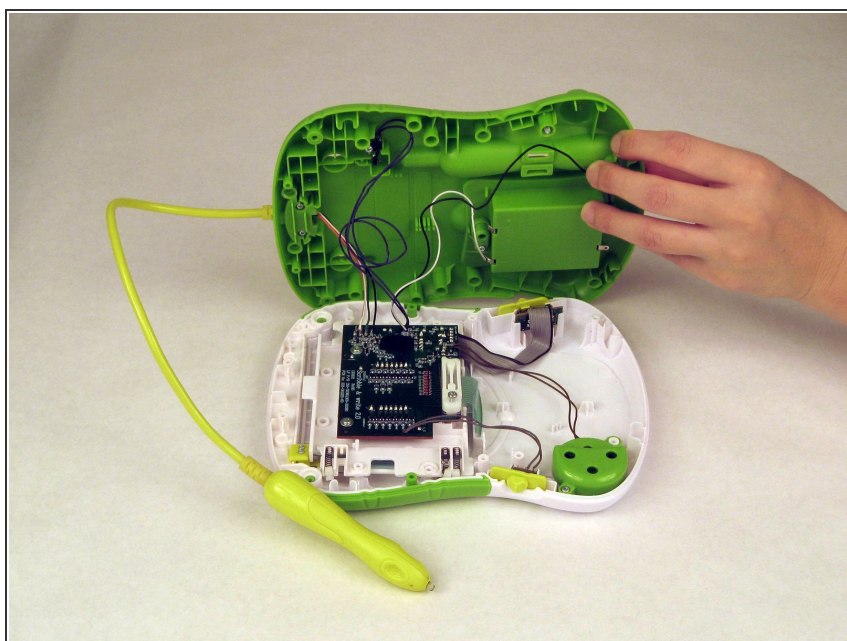
- [Phillips #0 Screwdriver](#) (1)

Step 1 — Display Screen



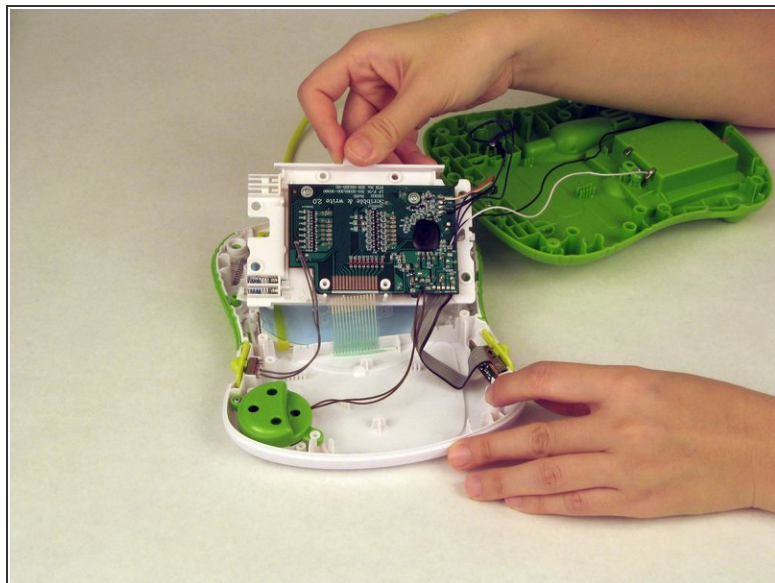
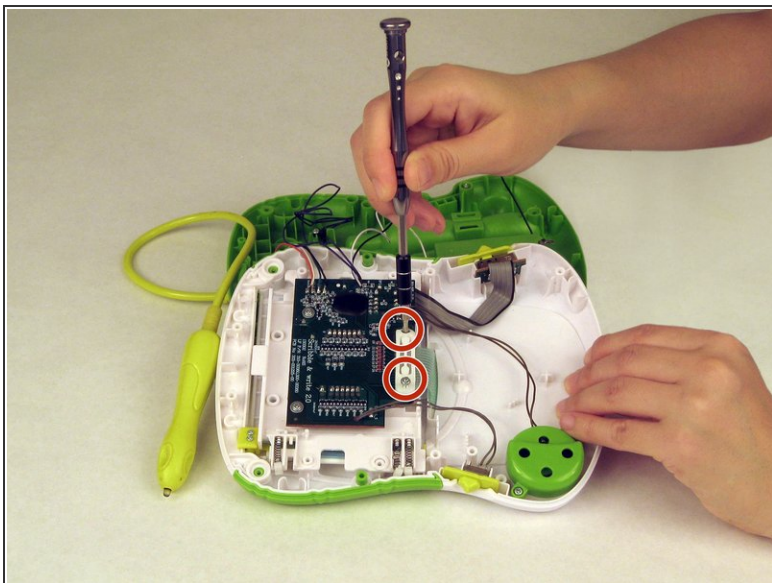
- Turn your toy over.
- Use a Phillips screwdriver to remove the nine case screws from the back of the toy.
- ☑ Be careful to keep track of the screws.

Step 2



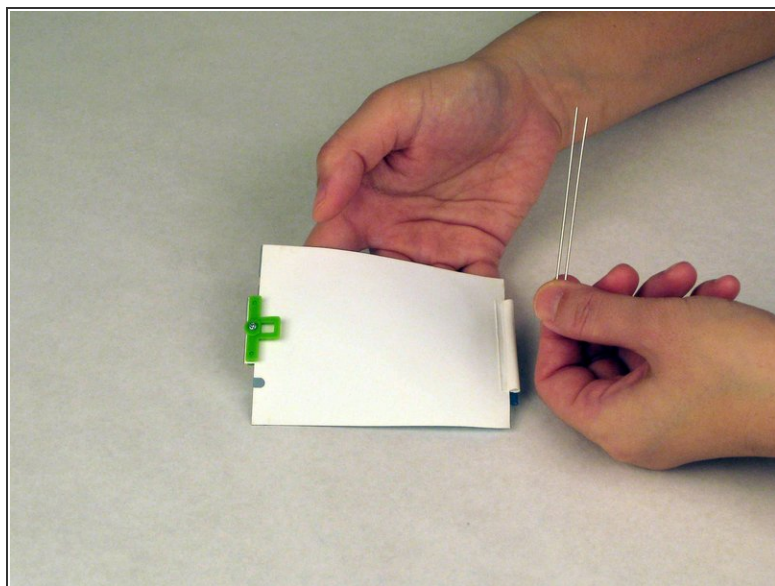
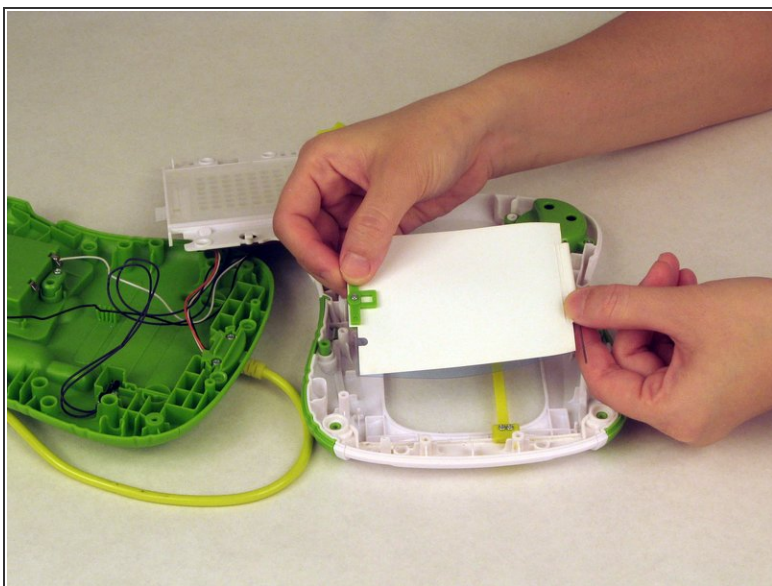
- Carefully remove the back of the toy..

Step 3



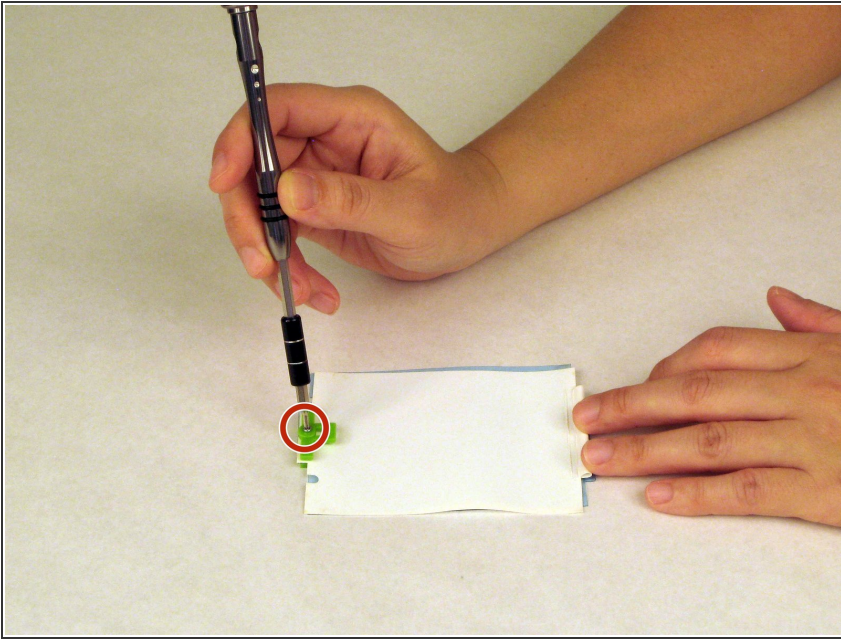
- Use a Philips screwdriver to remove the two screws attached to the motherboard.
- Remove the motherboard.

Step 4



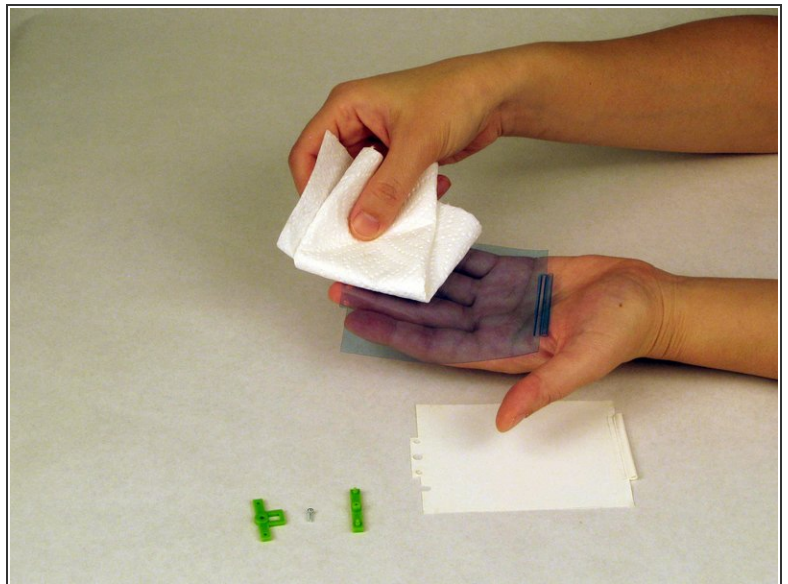
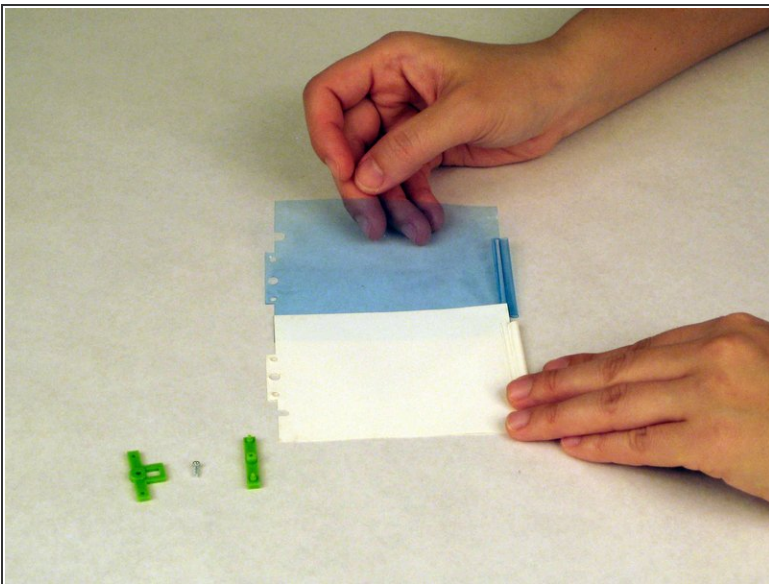
- Remove the screen.
- Remove the two pins from the bottom of the screen.

Step 5



- Use a Phillips screwdriver to remove the screw from the green clip that holds the two screen layers together.

Step 6



- Separate the blue and the white films.
- Clean both films with paper towel.
- ☑ Make sure there are no dirty spots before putting the films back together.

To reassemble your device, follow these instructions in reverse order.