



Motorola Moto G 3rd Generation Battery Replacement

This guide will show you how to replace the...

Written By: James Copeland



INTRODUCTION

This guide will show you how to replace the battery of your Motorola Moto G 3rd Generation. Replacing this part requires disassembling much of the phone.

Before you begin, download the [Rescue and Smart Assistant](#) app to backup your device and diagnose whether your problem is software or hardware related.

If your battery is swollen, [take appropriate precautions](#).



TOOLS:

[Mako Driver Kit - 64 Precision Bits](#) (1)

[Heat Gun](#) (1)

Alternative to iOpener

[iFixit Opening Picks \(Set of 6\)](#) (1)

[iOpener](#) (1)

[iFixit Opening Tool](#) (1)

[X-ACTO Knife](#) (1)

[adhesive tape 3 mm](#) (1)

Used for securing the new battery.

[Spudger](#) (1)



PARTS:

[Moto G3 Battery - Genuine](#) (1)

Step 1 — Display



- Use your fingernail to pry under the notch on the bottom of the phone and remove the back cover.

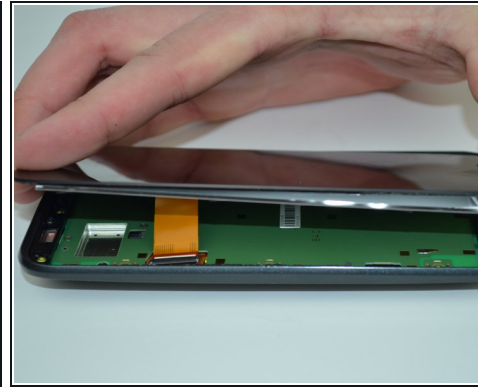
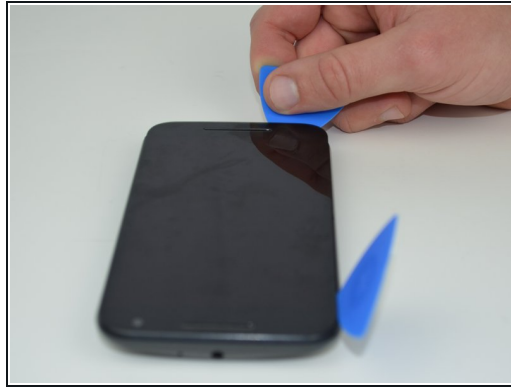
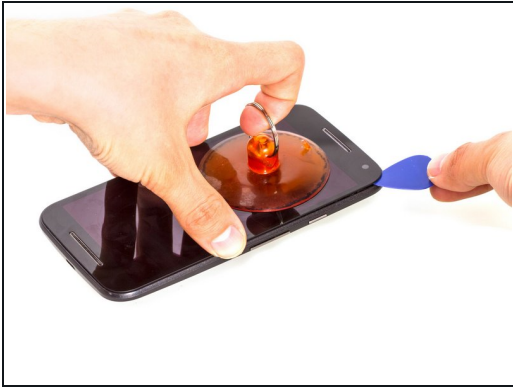
⚠ Make sure to fully power off the phone before you begin disassembly.

Step 2



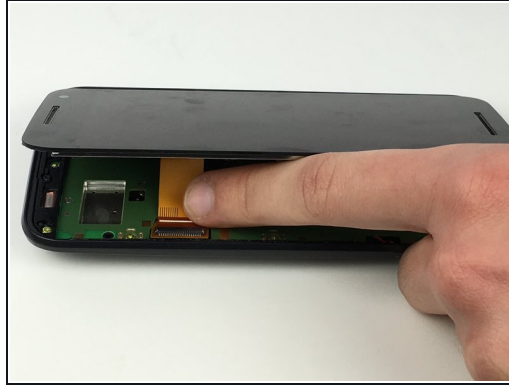
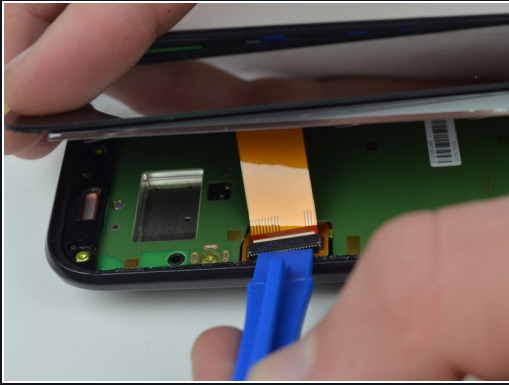
- ① Use a heat gun or an iOpener as a heating tool. This [guide](#) explains how to use the iOpener.
 - Evenly apply heat to the edges of the touchscreen to loosen the adhesive. Continue to Step 3 once the edge of the screen is warm to the touch.
- ⚠ Do not let the iOpener/heat gun remain on one spot for too long. Excess heat can damage the phone.
- ✦ When reassembling the phone, use the iOpener/heat gun to help the adhesive fuse to the new screen. Heat the screen edges, apply pressure to the screen, and hold the screen in place until it is secure.

Step 3



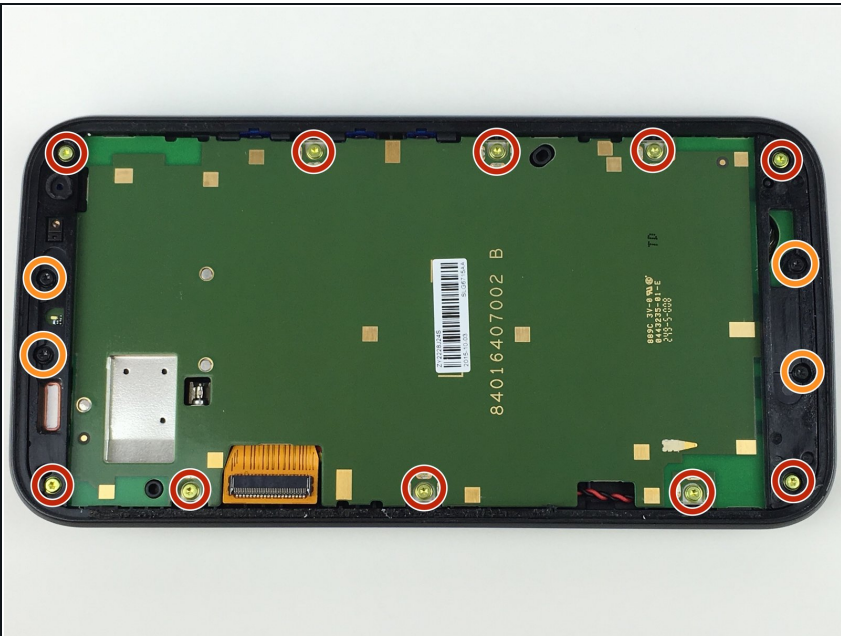
- As the adhesive loosens, pry up an edge of the screen with a plastic opening tool or an opening pick. A suction cup may also be useful here.
 - Use an opening pick to hold that edge in place and continue this process around the entire screen, applying more heat as necessary.
- ⚠️ Avoid damaging the LCD screen connector while prying along the screen edges. It is located on the left edge of the phone, across from the volume controls.**
- ★ During reassembly, new adhesive may need to be applied over the old adhesive to properly secure the screen.**

Step 4



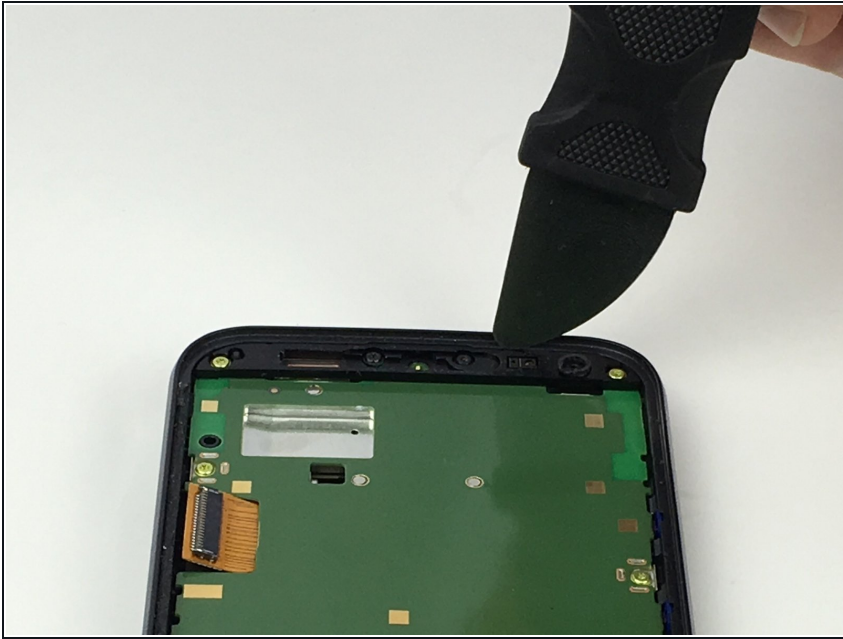
- Use a plastic opening tool to flip up the lock on the display cable ZIF connector.
 - Pull the display cable from its socket on the motherboard.
- ☒ When installing a new display, carefully remove all remaining adhesive from the phone, and clean the adhered areas with isopropyl alcohol (90% or greater) and a lint-free cloth. Install the display using pre-cut adhesive or a strong double-sided tape such as [Tesa 61395](#). Turn your phone on and test your repair before sealing the display in place.

Step 5 — Motherboard



- Remove the ten 2.4 mm T4 screws from the sides of the motherboard.
- Remove the four 4.5 mm T4 screws from the top and bottom of the motherboard.

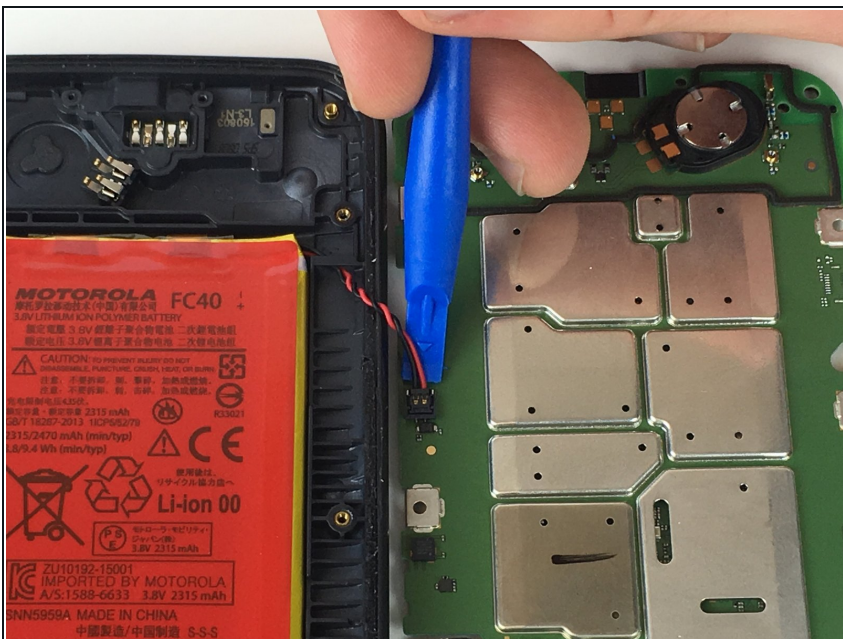
Step 6



- If adhesive residue is holding the motherboard in place, use a Jimmy to cut the adhesive between the motherboard and the back of the phone.
- Carefully lift the right edge of the motherboard from the phone.

⚠ Avoid pulling on the battery wires, which connect the left underside of the motherboard to the battery.

Step 7



- Use a plastic opening tool to disconnect the battery wires from the motherboard.

Step 8 — Battery



- Use a spudger to carefully pull the battery wire connector out from under the bridge.

Step 9



- Pry the battery out of the casing using a spudger.
- ⓘ If the battery is hard to pry out, you may need to first apply some heat from the back of the cover using a heat gun or iOpener.
- ★ When inserting a new battery, new adhesive or tape may be needed to secure it in place.

⚠ Work carefully. Li-ion batteries can react violently if punctured.

To reassemble your device, follow these instructions in reverse order.