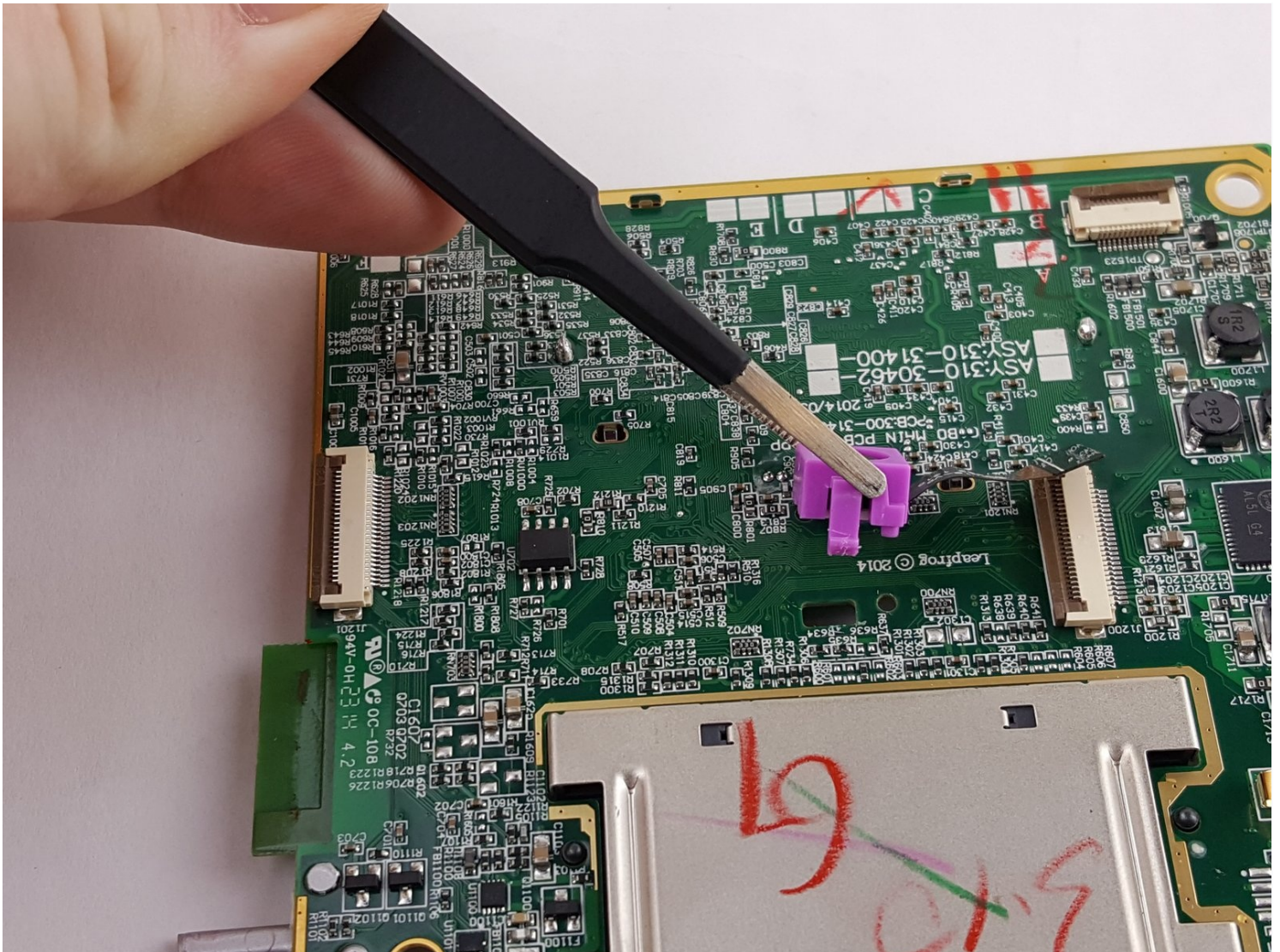




Leapfrog LeapPad 3 Rear Facing Camera Replacement

This guide is rather lengthy as many components...

Written By: Matt Irvine



INTRODUCTION

This guide is rather lengthy as many components must be removed to access the rear facing camera. However, few tools are required and is over all an easy fix.

TOOLS:

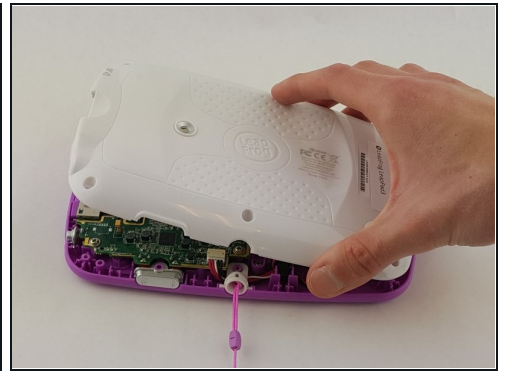
[Anti-Static Wrist Strap](#) (1)

[iFixit Opening Tool](#) (1)

[Phillips #0 Screwdriver](#) (1)

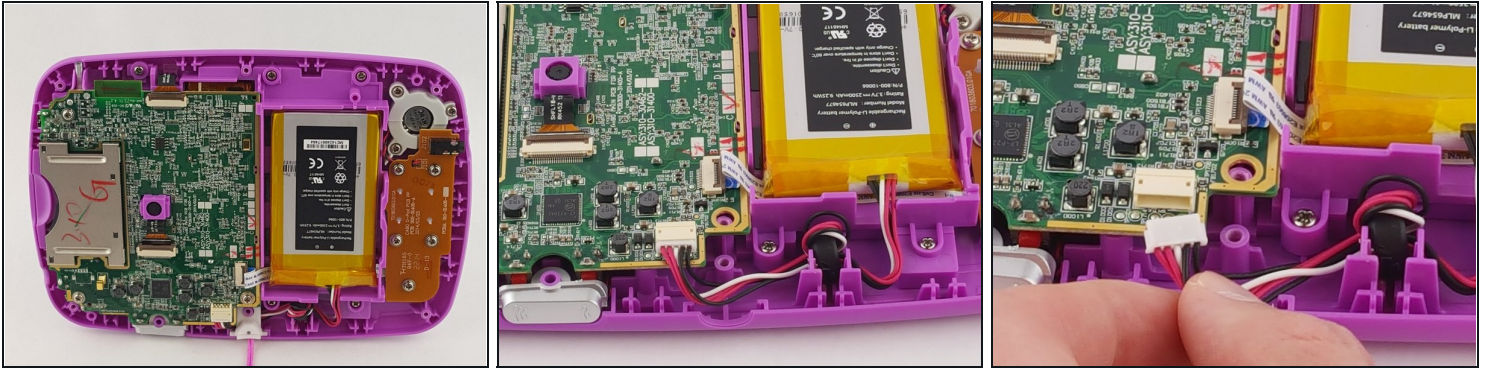
[Tweezers](#) (1)

Step 1 — Battery



- Before taking apart your device, ensure that it is turned off and that your [anti-static wrist strap](#) is secured to a ground.
- Remove the six 10.0 mm Phillips #0 screws from the outer case and remove the cover with your hands.
- ① You will not need to pry the case off.

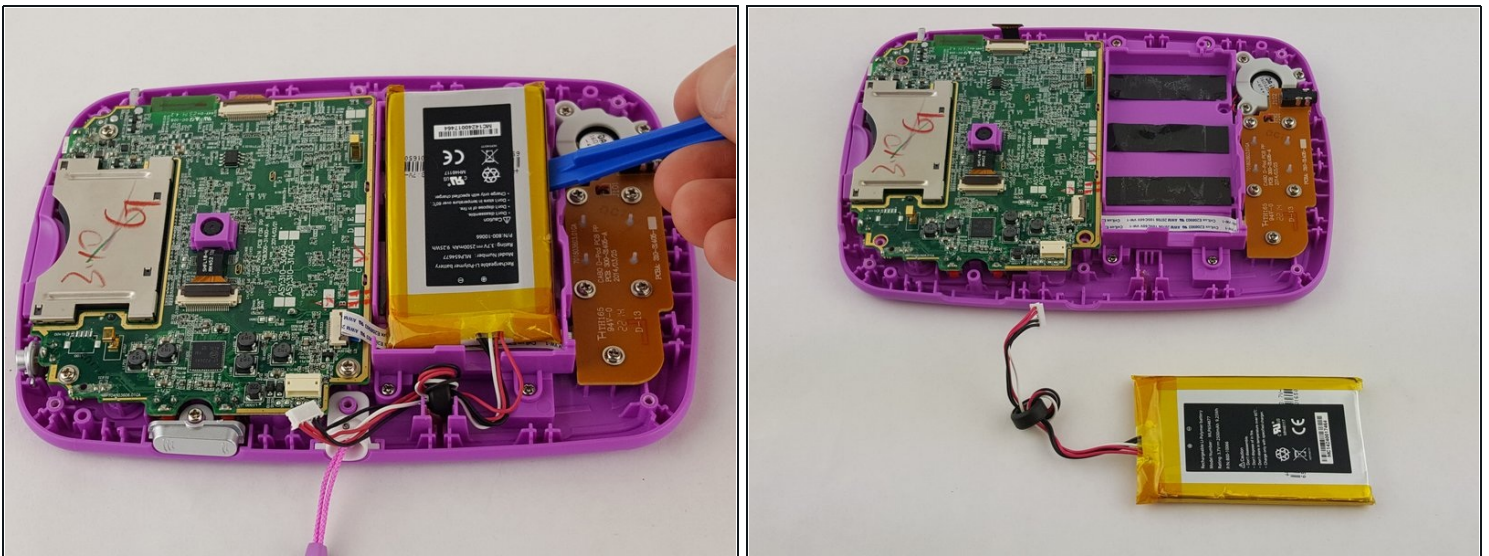
Step 2



- Unplug the battery from the motherboard with your hands.

① The battery sits to the right of the motherboard.

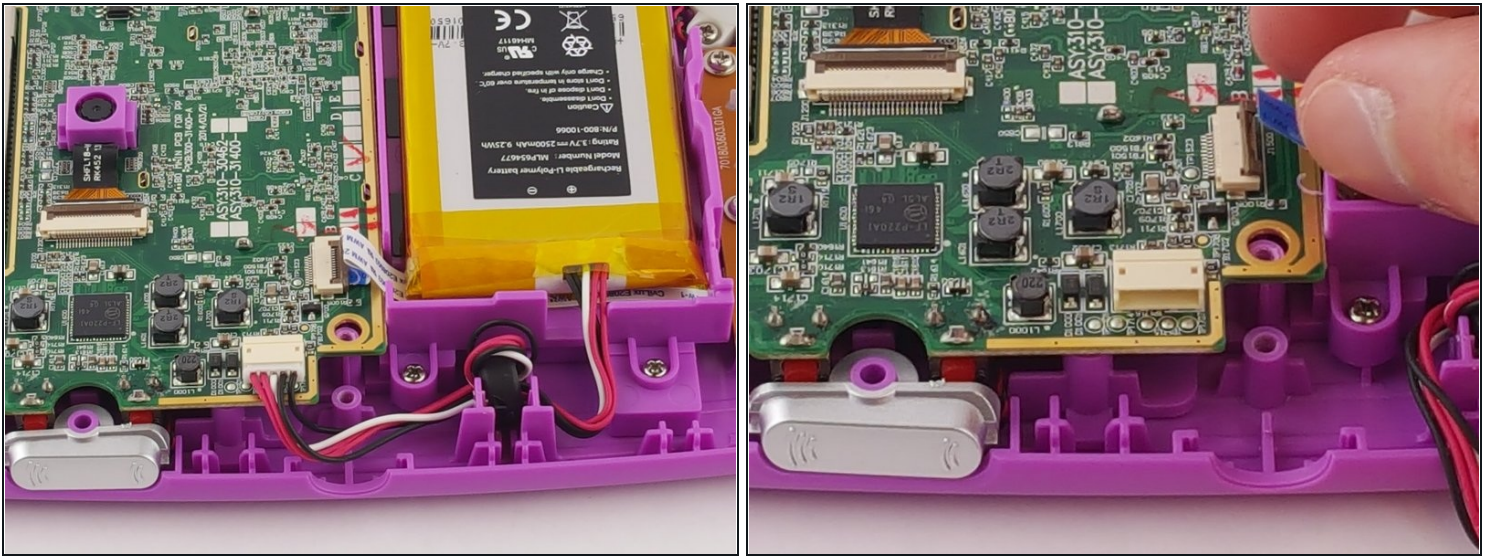
Step 3



- Pry the battery gently off of the plastic platform with an opening tool.

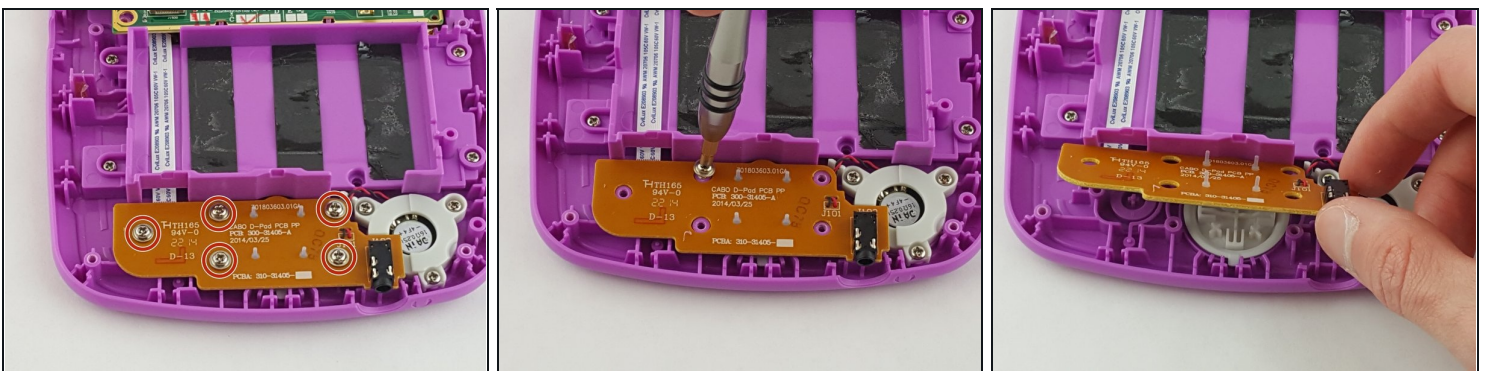
⚠ Do not to puncture the battery, as the material inside can be dangerous.

Step 4 — Speaker



- Disconnect the audio cord from the motherboard using a plastic opening tool.
 - ① When re-plugging this cord be sure it is flush with the slot, otherwise the speaker and directional pad will malfunction.
- ⚠ Use caution when unplugging, and re-plugging the ribbon cord as they are fragile.

Step 5



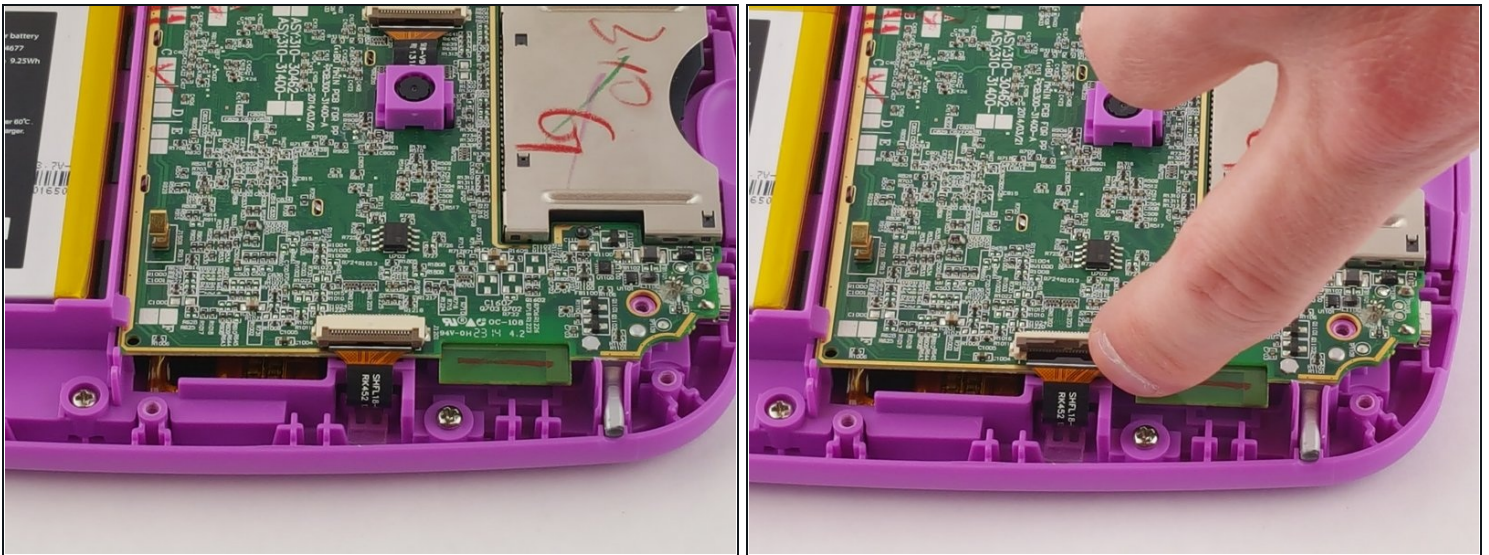
- Unscrew the five 6.0 mm phillips head screws from the board containing the audio jack and directional pad.

Step 6



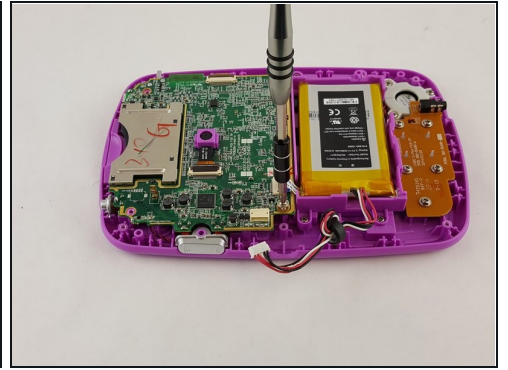
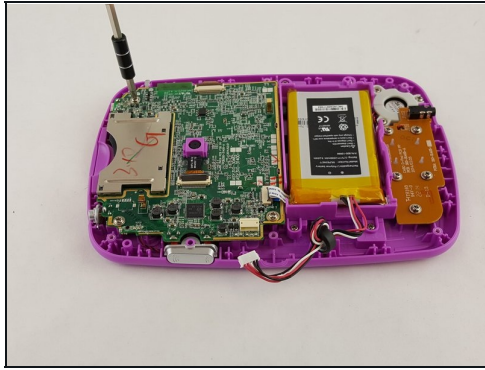
- Unscrew the three 6.5 mm phillips head screws holding down the speaker to the right of the audio jack.
- Remove the board and speaker from the device.

Step 7 — Motherboard



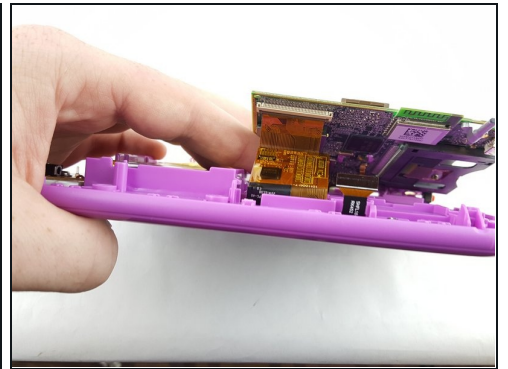
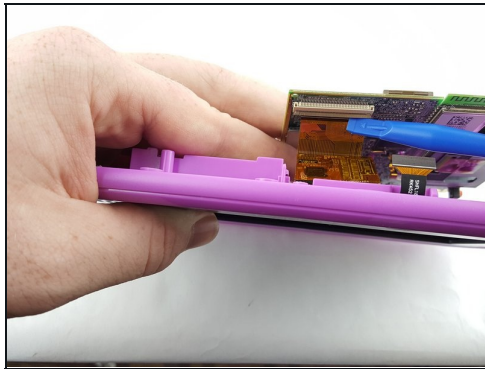
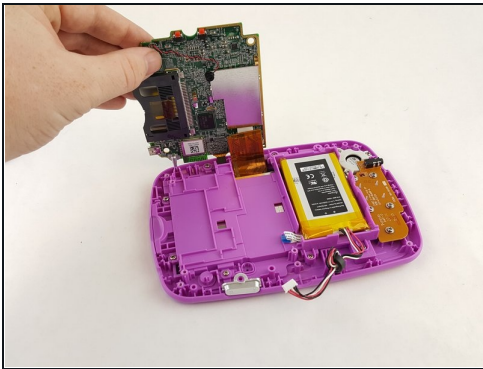
- Unplug the front facing camera cord with an opening tool to free the top of the motherboard.

Step 8



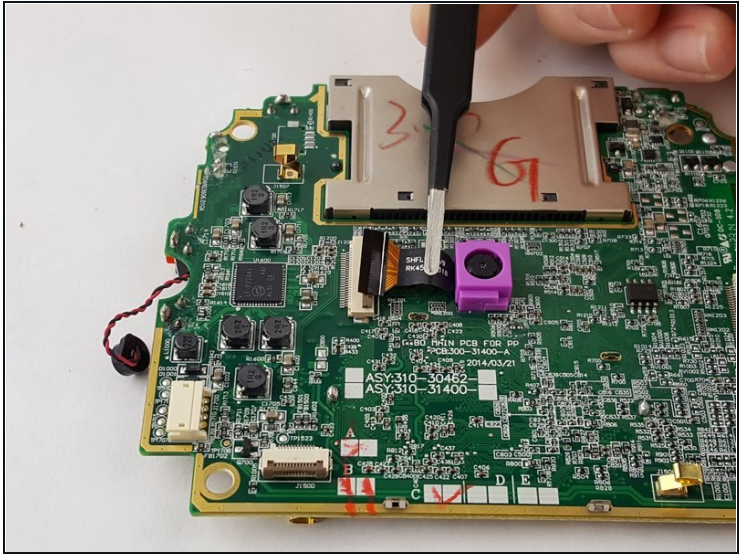
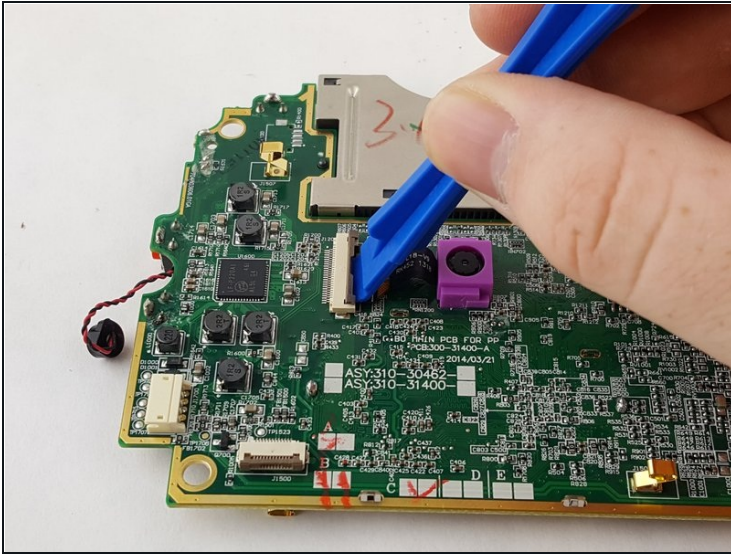
- Remove the three 6 mm phillips head screws holding the motherboard to the display assembly.

Step 9



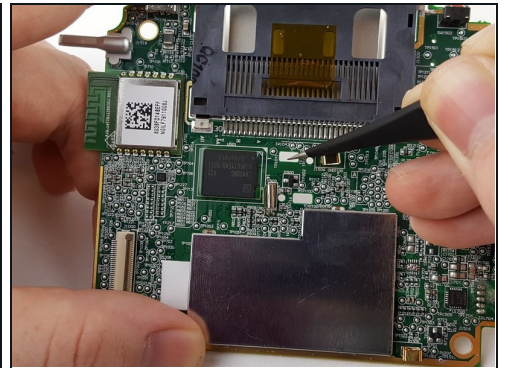
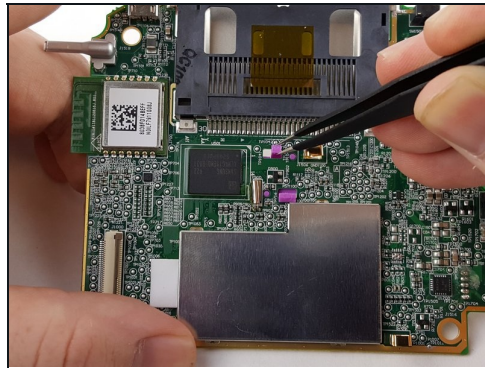
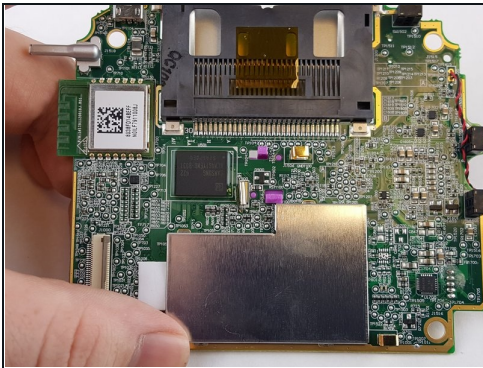
- Carefully lift the motherboard out of the case, exposing the last remaining cord on the underside of the motherboard.
 - Disconnect the gold display assembly cord with an opening tool to fully disconnect the motherboard.
- ① The device was rotated 180 degrees in order to unplug the display assembly cord.

Step 10 — Rear Facing Camera



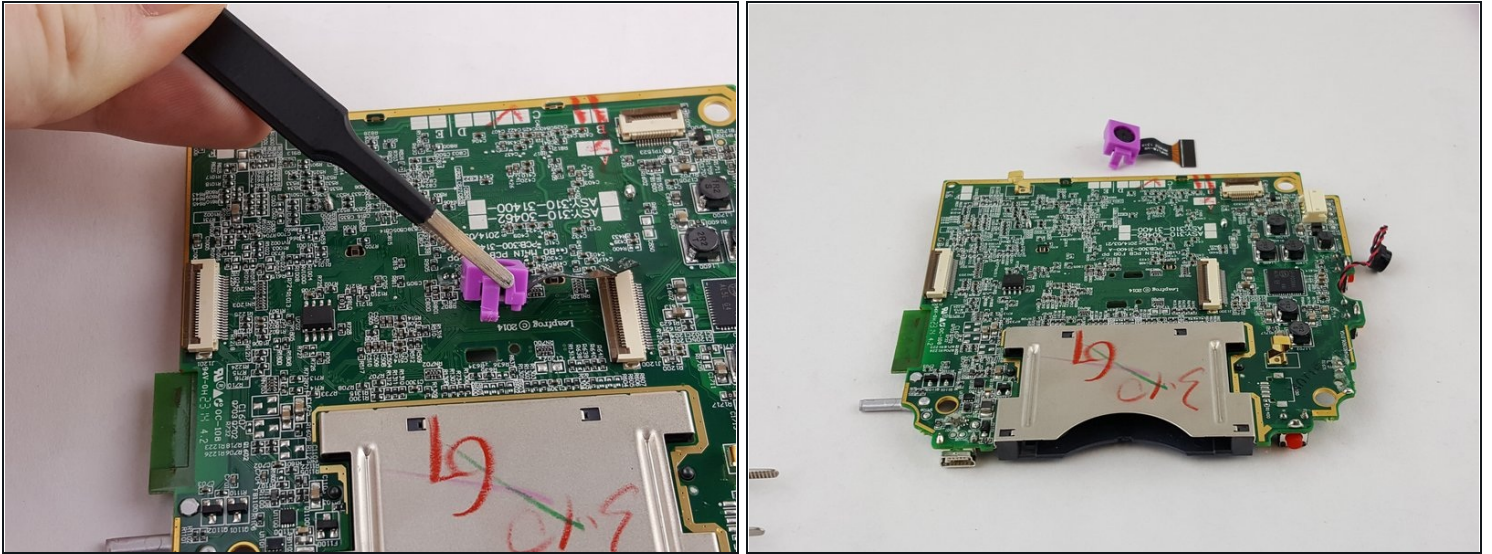
- Unplug the rear facing camera located in the top center of the motherboard.

Step 11



- Unhook the small plastic tooth from the underside of the motherboard. This can be accomplished with [tweezers](#).

Step 12



- Pull the camera out of the top of the motherboard for replacement.

To reassemble your device, follow these instructions in reverse order.