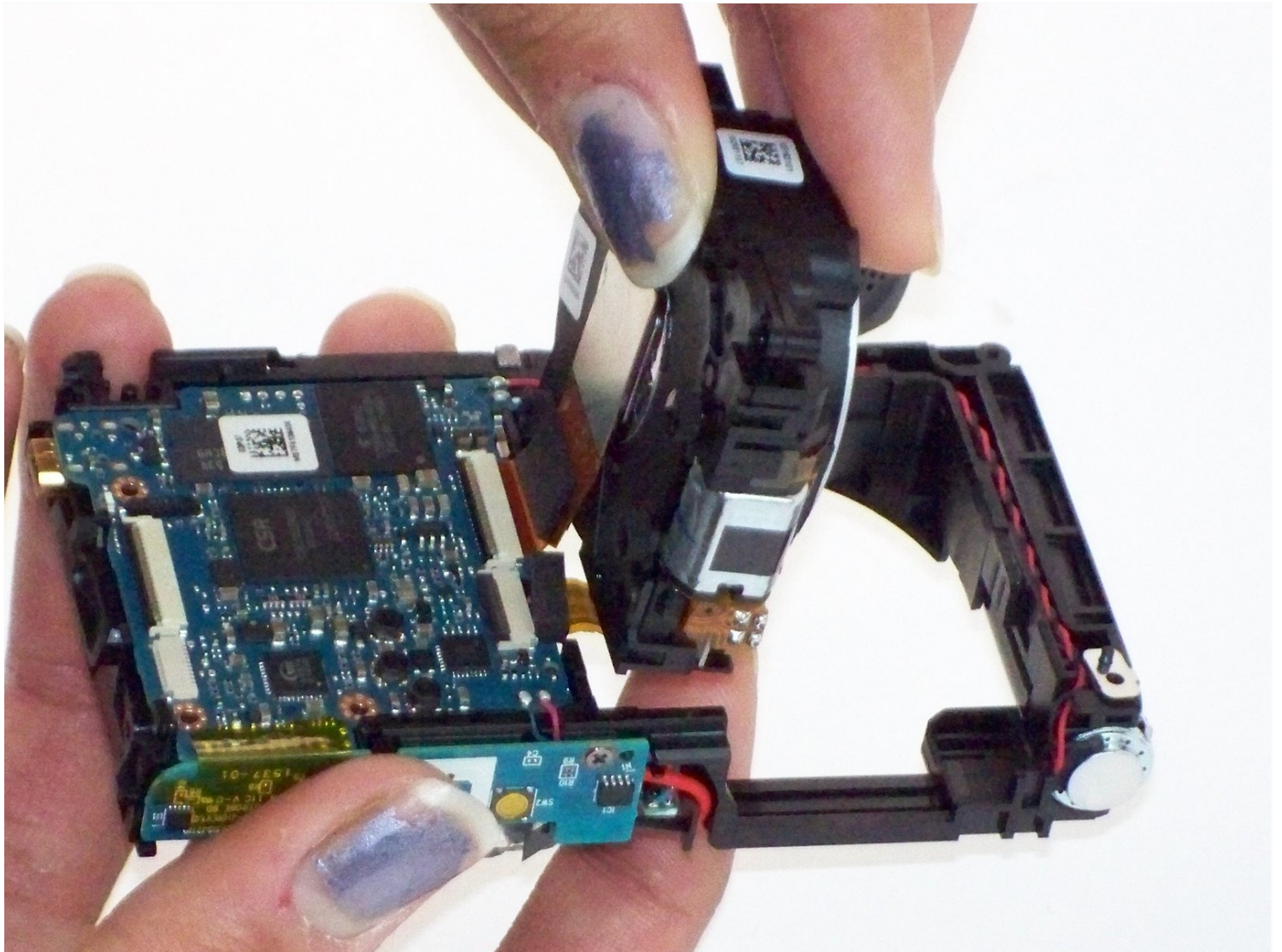




# Sony Cyber-shot DSC-W800 Lens Replacement

Some things to consider before you work on the...

Written By: Thomas Campo



# INTRODUCTION

Some things to consider before you work on the Sony Cyber-shot DSC W800 to replace the Lens:

- The Lens is an integral part of the device and any improper handling can cause issues in other parts of the camera.
- Be cautious when removing ribbon wires.
- Be sure to keep track of all pieces that are taken apart.

---

## TOOLS:

[Phillips #000 Screwdriver](#) (1)

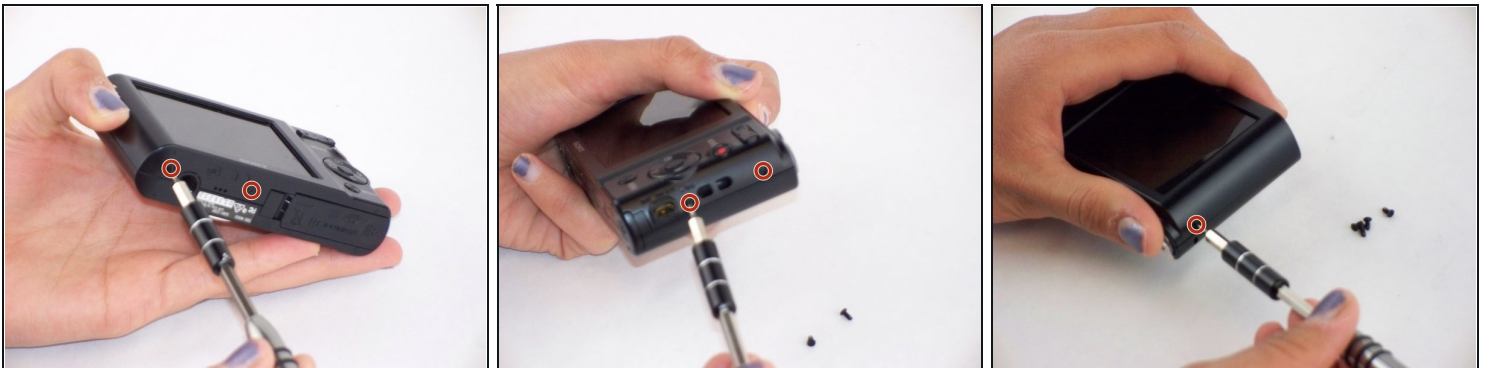
[Spudger](#) (1)

[Tweezers](#) (1)

[iFixit Opening Tool](#) (1)

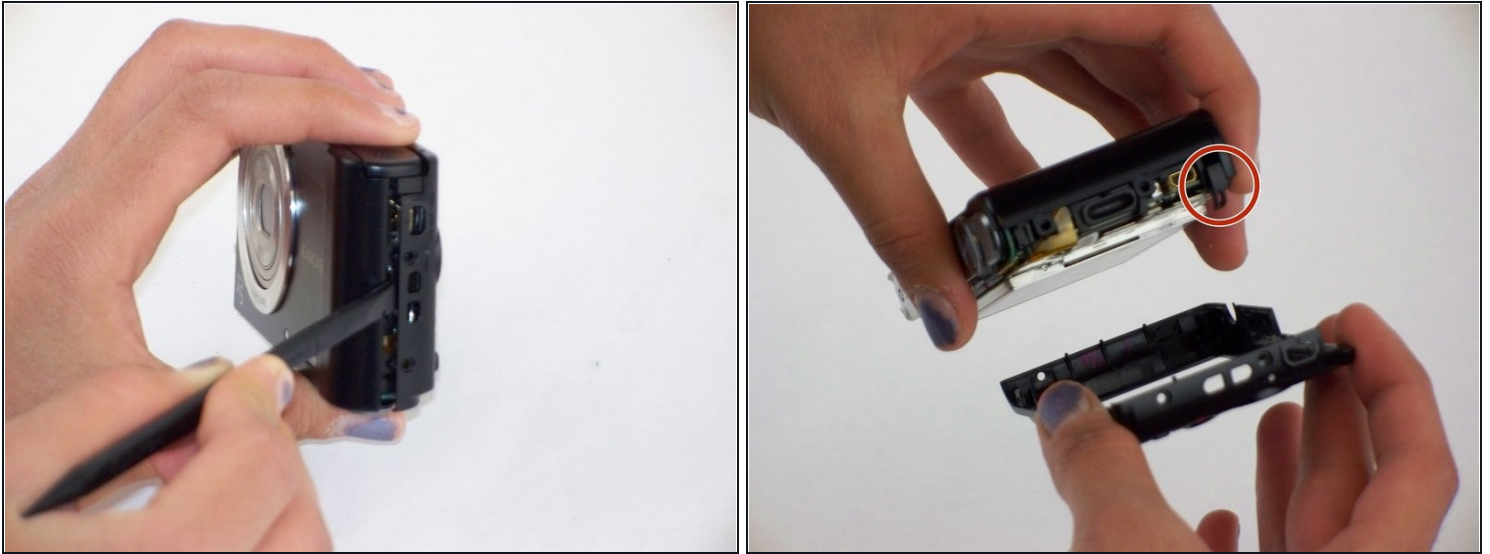
---

## Step 1 — Button Board



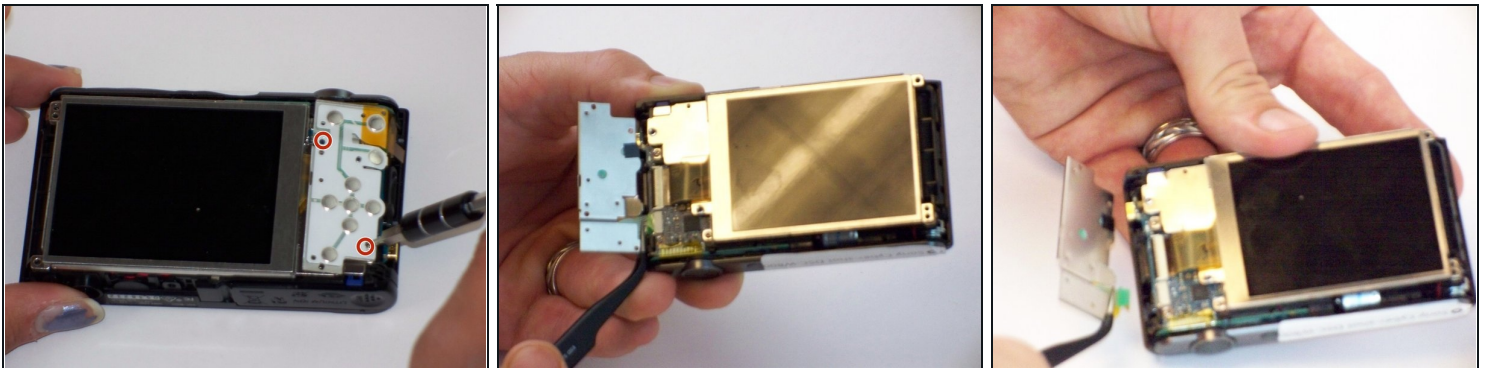
- Remove the five 4.0 mm Phillips #000 screws on the back panel.

## Step 2



- Using the Spudger, remove the back panel from the device.
- The loose piece circled in the picture will most likely fall off the camera housing.

## Step 3

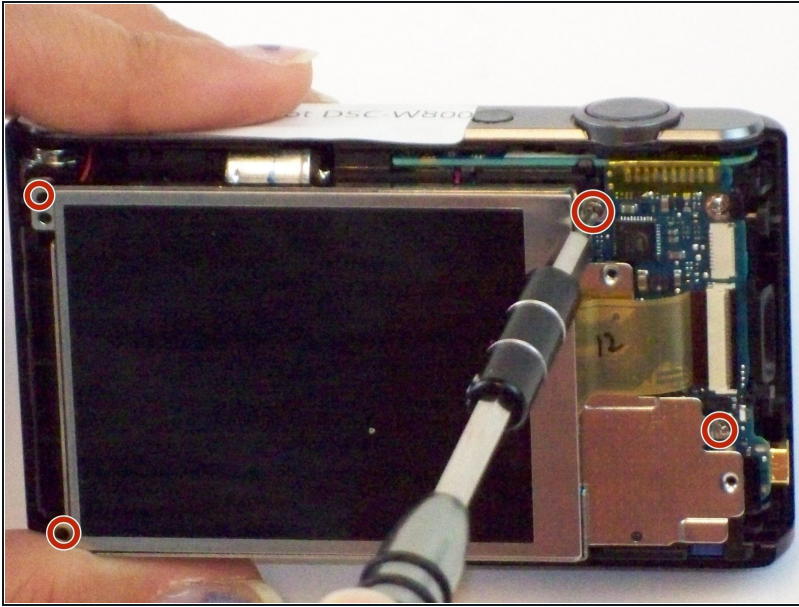


- Remove the two 2.15mm Phillips #000 screws from the circuit board.
- Gently pull on the ribbon wire from ZIF connector with the [tweezers](#) to remove the button board.

⚠ Ribbon wires can easily be damaged.



## Step 4 — LCD Screen



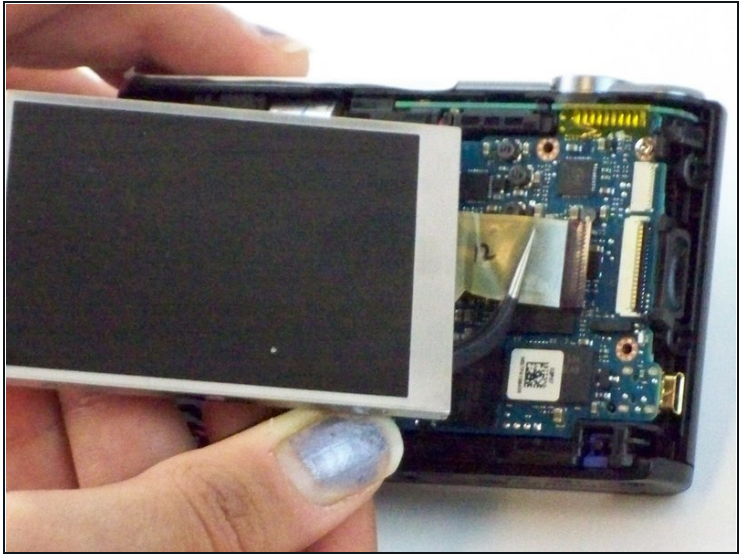
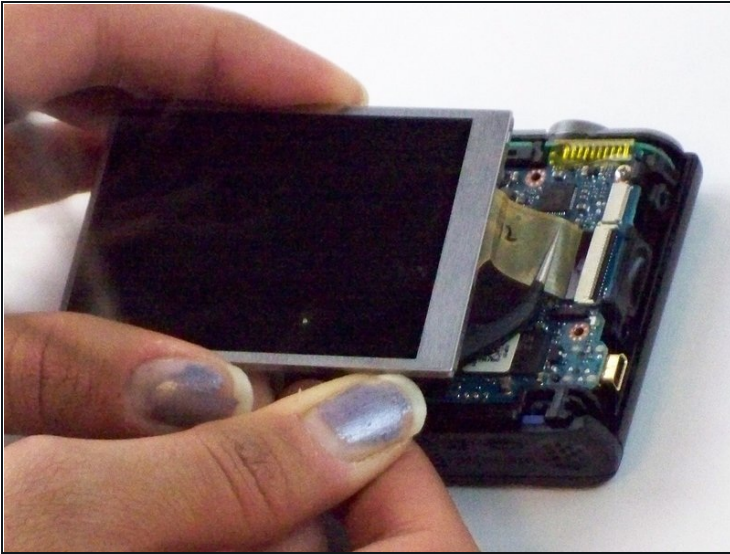
- Remove the four 3.75 mm Phillips #000 screws from the LCD back panel.

## Step 5



- Lift the back panel and separate the LCD Screen by prying it up.
- Remove the back panel.

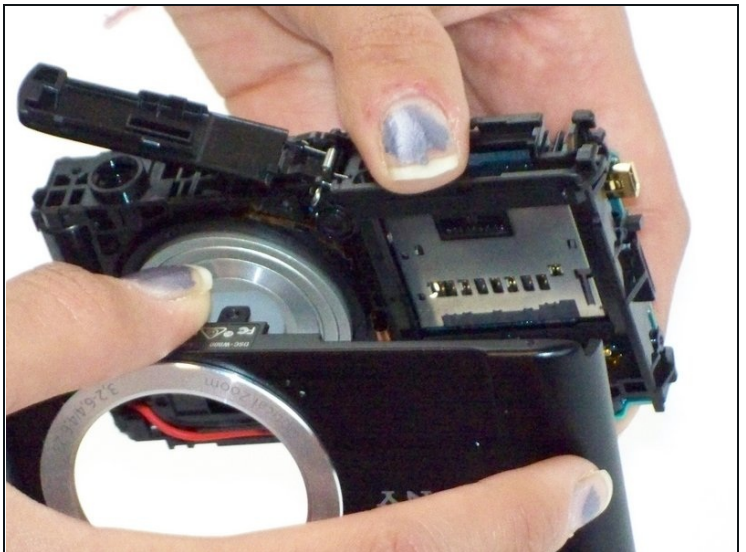
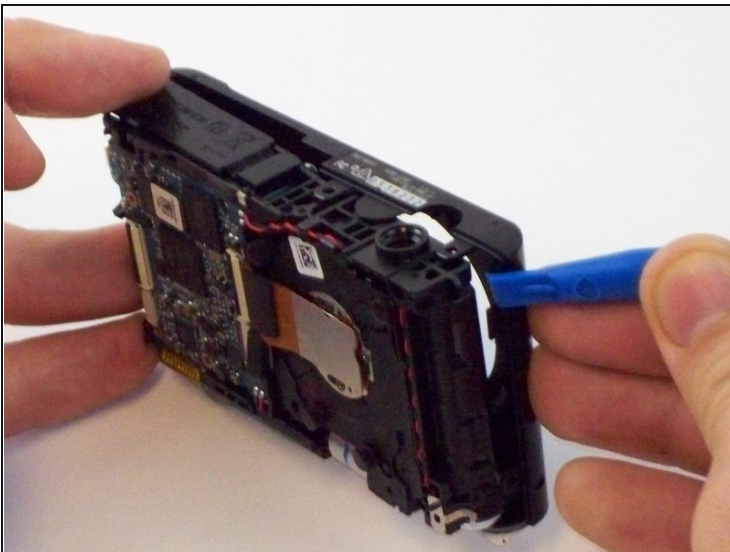
## Step 6



- Gently pull on the ribbon wire disconnecting from the ZIF connector (connecting the LCD screen to the motherboard) with the [tweezers](#).

⚠ Ribbon wires can be easily damaged.

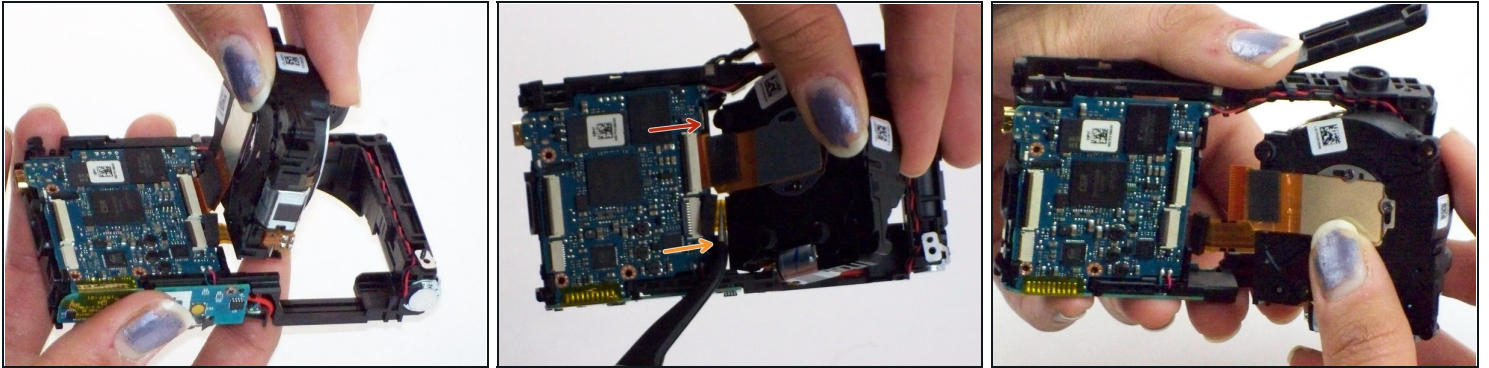
## Step 7 — Lens



- With plastic opening tool, gently pry loose the front panel.
- Separate front panel from the camera housing.



## Step 8



- Remove the lens housing by pushing it, from the front, through the housing and lifting it out.
- Gently pull on the large ribbon wire (connecting the Lens housing to the motherboard via ZIF connector) with the [tweezers](#).
- Gently pull on the small ribbon wire (connecting the Lens housing to the motherboard) with the tweezers.

⚠ Be careful not to damage either of the ribbon wires.

---

To reassemble your device, follow these instructions in reverse order.