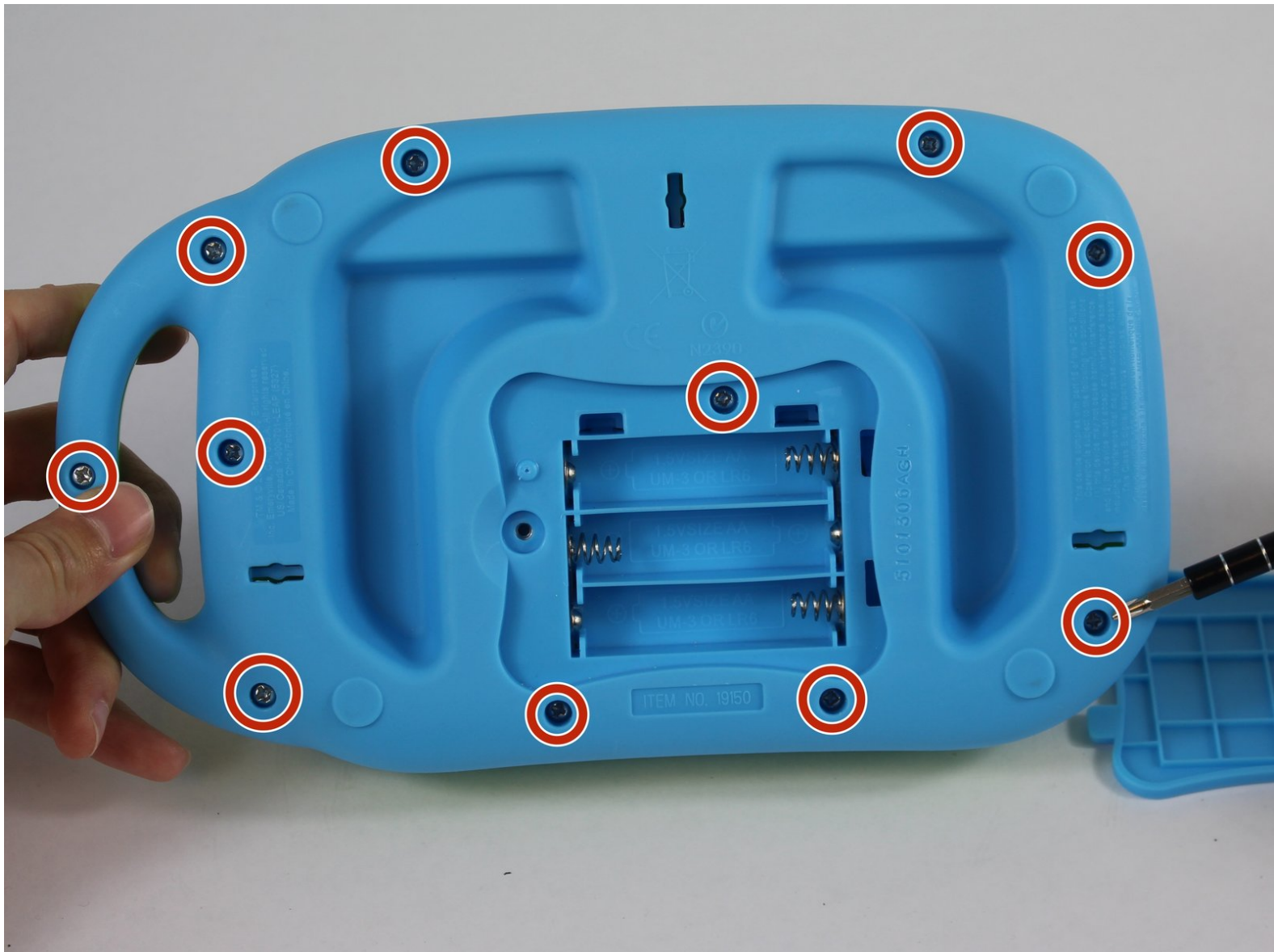




Leapfrog My Own Leaptop Keyboard Buttons Replacement Guide

Access, cleaning and replacement of keyboard buttons.

Written By: Jonathan Fitzer



INTRODUCTION

The step by step guide is designed to assist with button replacement of the Leapfrog My Own Leaptop.

TOOLS:

- [Phillips #1 Screwdriver](#) (1)
 - [Plastic Opening Tool](#) (1)
 - [Tweezers](#) (1)
-

Step 1 — Battery



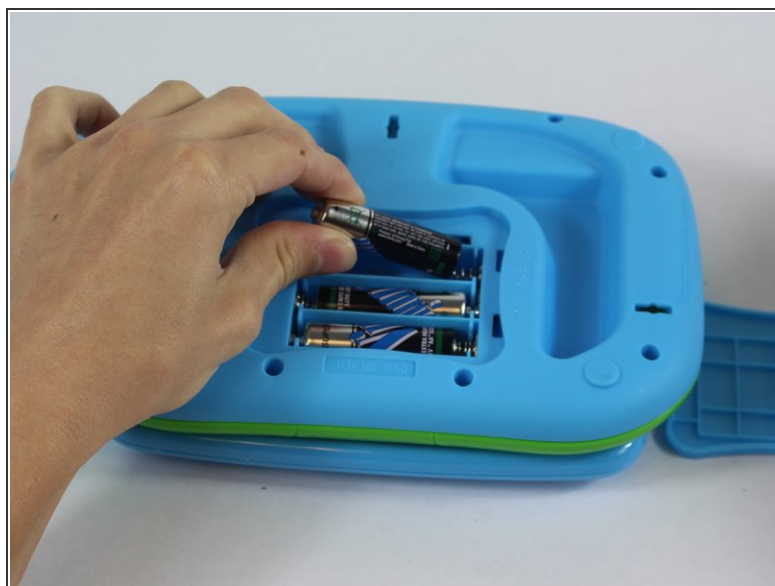
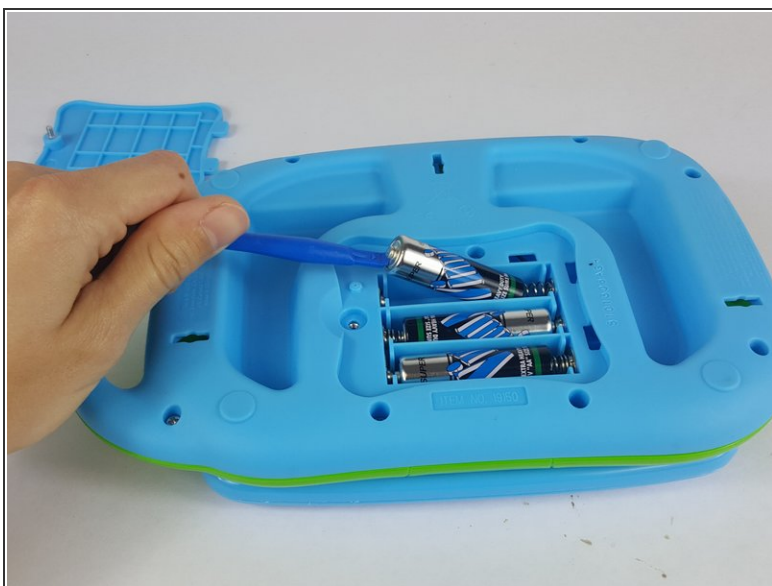
- Flip over device so that back portion of the device is facing you.

Step 2



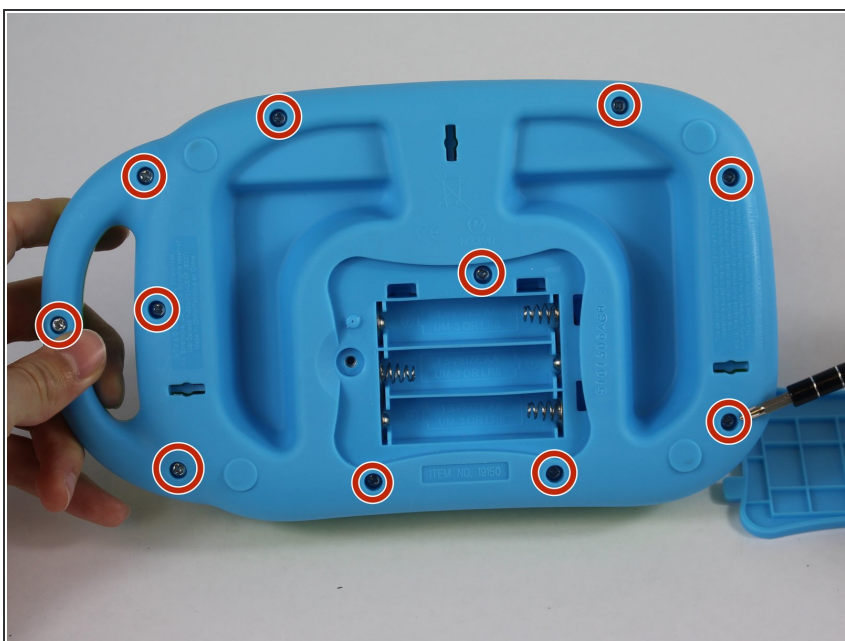
- Unscrew the one 10mm screw that holds the battery cover in place with a a PH1 phillips head screwdriver.
- ★ Please note that the screw cannot be removed as it is attached to the battery cover.

Step 3



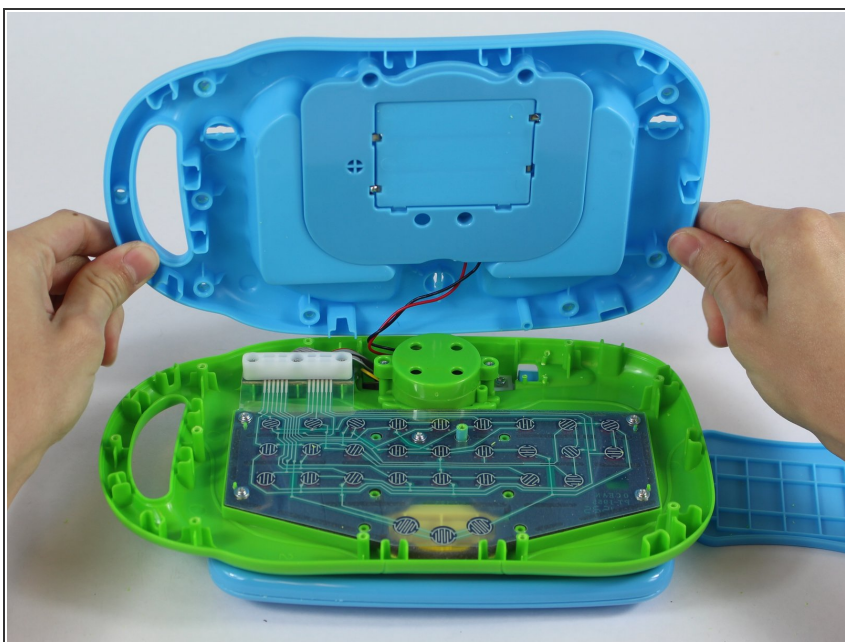
- Carefully pry the batteries out with a plastic opening tool prying from the non spring side.
- Remove the three AA batteries.
- ⓘ Note the direction of the batteries for when reassembling.

Step 4 — Keyboard Buttons



- Remove the eleven 10mm screws from the back of the device with a PH1 phillips head screwdriver.

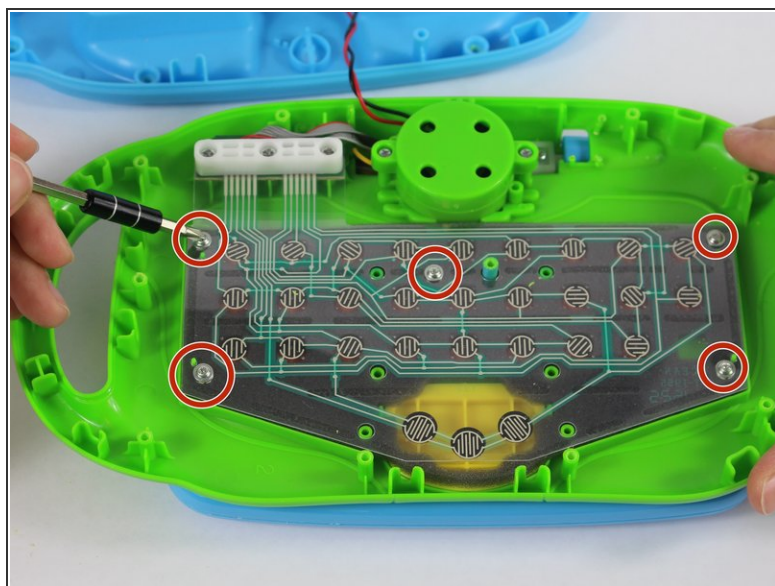
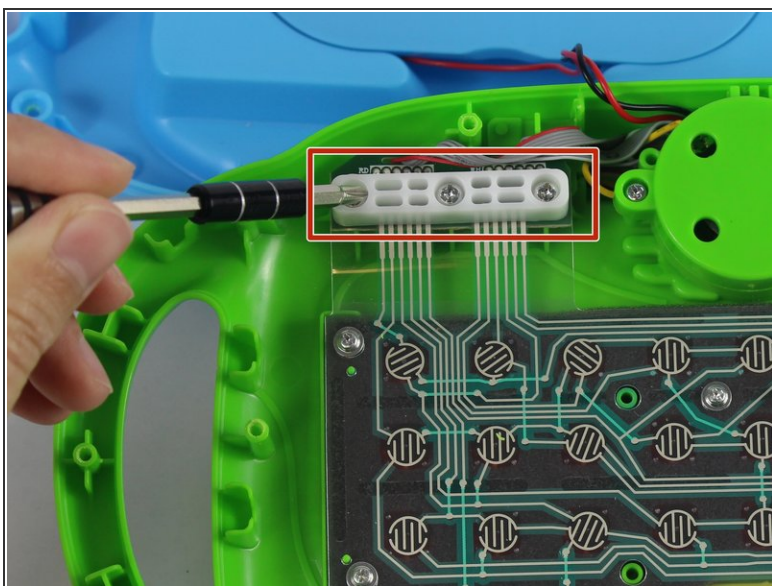
Step 5



- Carefully remove back of the device.

⚠ Make sure not to rip the wires when lifting the cover off.

Step 6



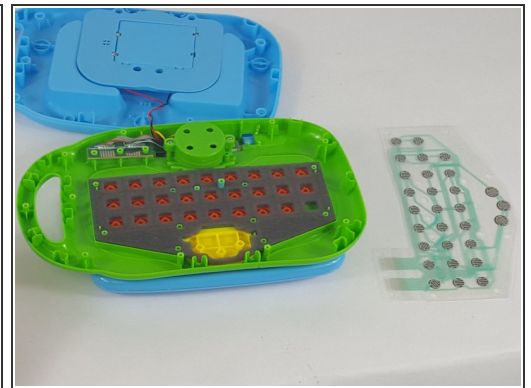
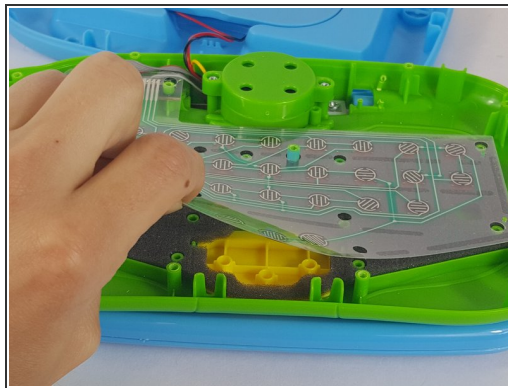
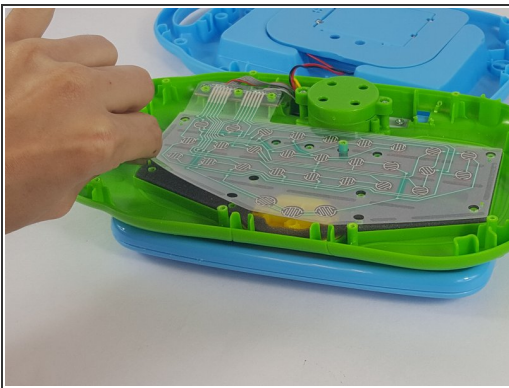
- Remove the three 10mm screws from the upper left hand corner white plastic piece with a PH1 phillips head screwdriver.
- Unscrew the five 4mm screws from the plastic membrane with a PH1 phillips head screwdriver.

Step 7



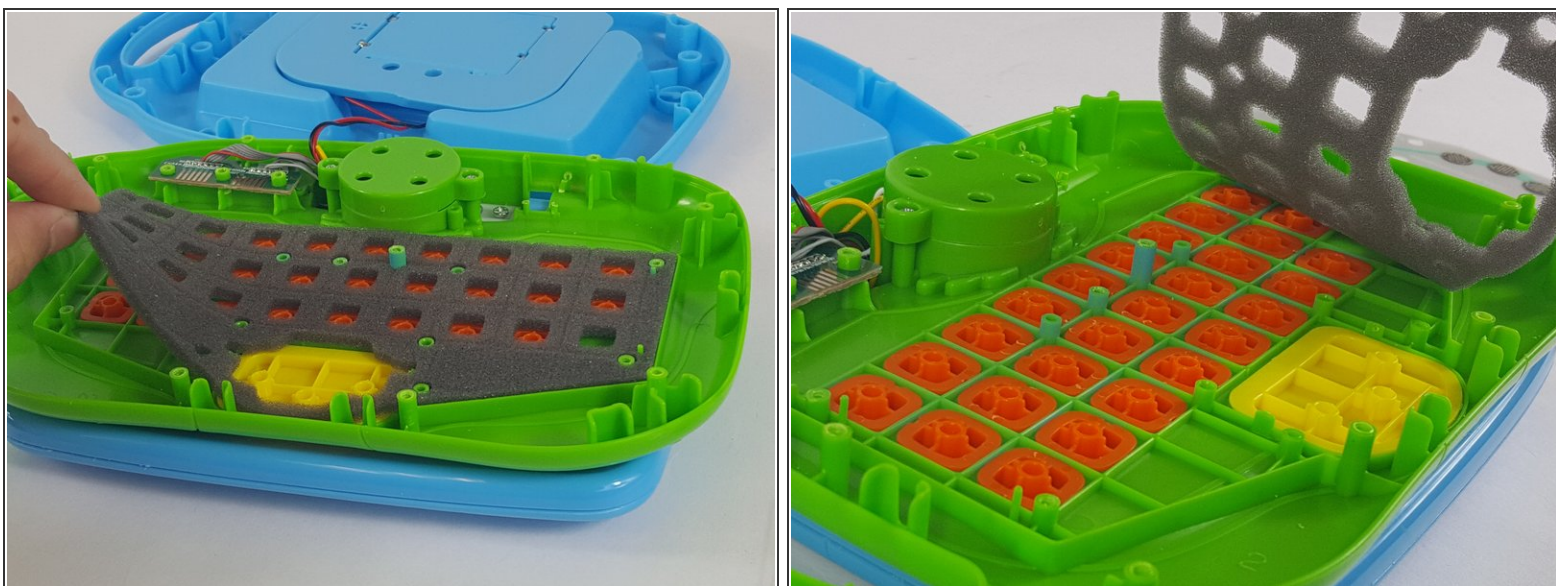
- Remove the white plastic piece and place it to the side.

Step 8



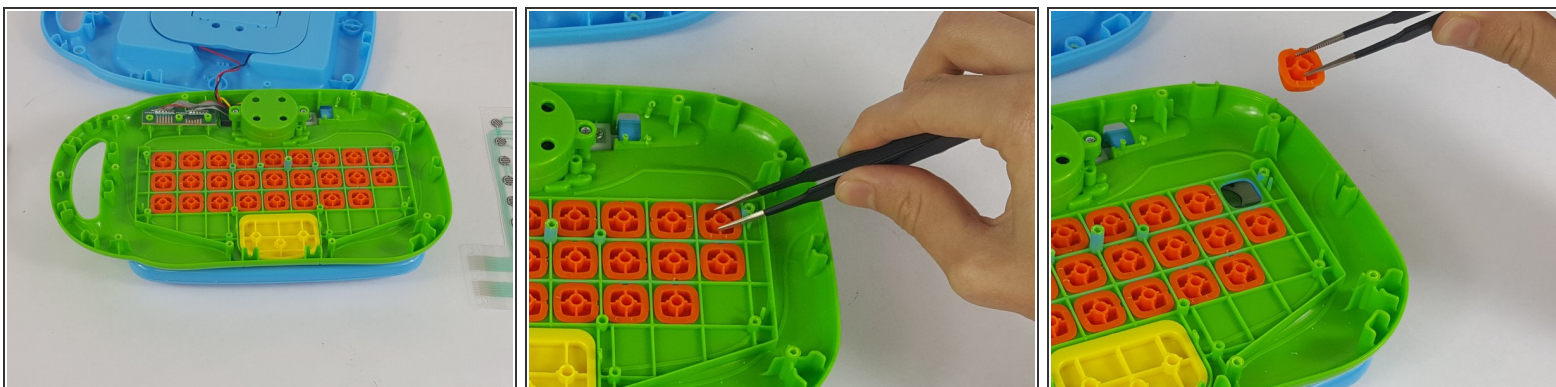
- Gently grab the membrane and peel it upwards.
- Carefully remove the membrane and set it to the side.
- From this step you can also clean the membrane of any residue with a lightly dampened paper towel.
- Ensure that the membrane is completely dry before reassembly.

Step 9



- Gently lift and remove the foam piece

Step 10



- From here, each button is able to be removed for cleaning or replacement.
- Using a tweezers or needle nose pliers, remove the necessary pieces from the device.

To reassemble your device, follow these instructions in reverse order.