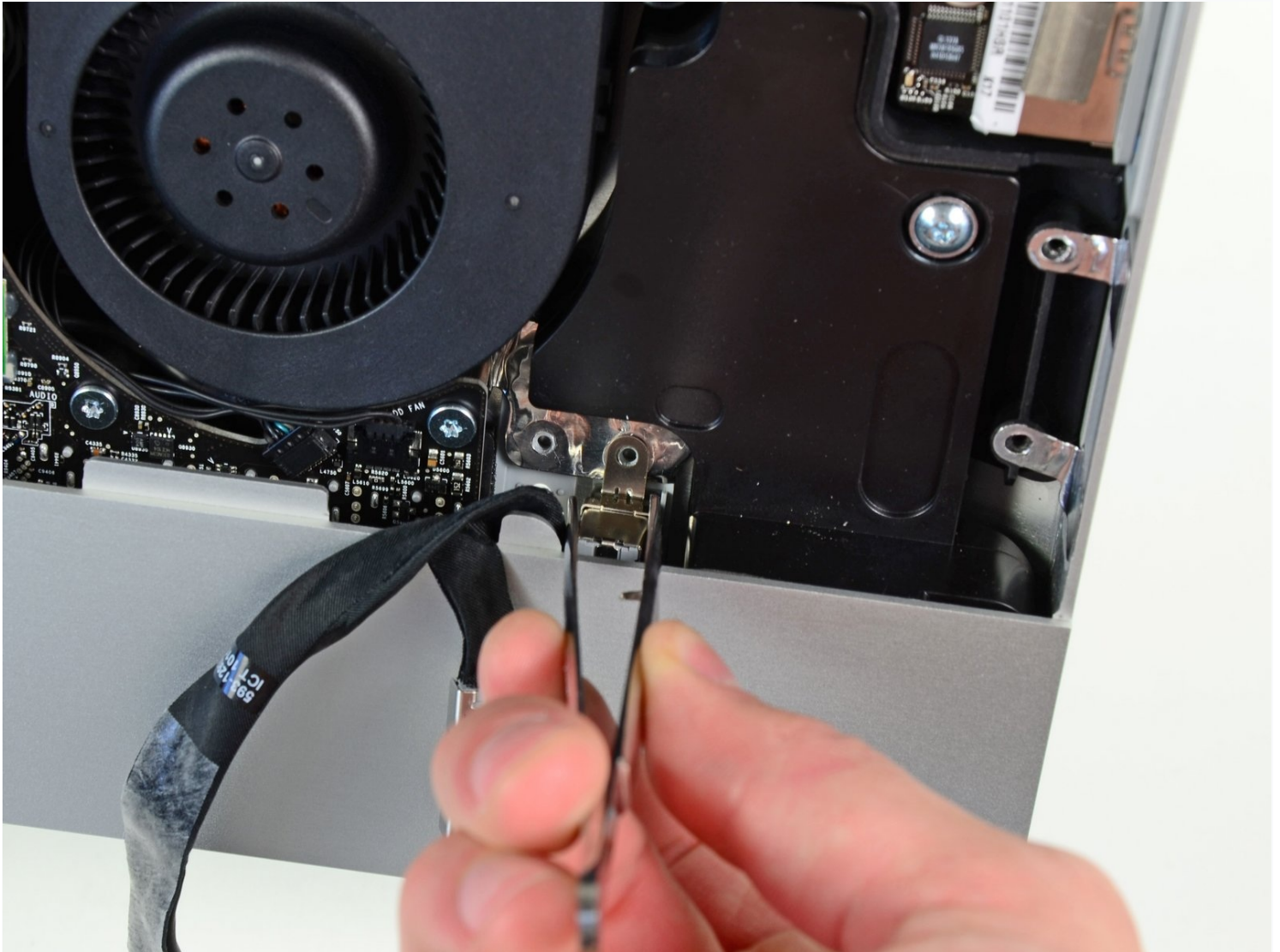




iMac Intel 21.5" EMC 2428 Audio Ports Replacement

Use this guide to replace the...

Written By: Walter Galan



INTRODUCTION

Use this guide to replace the headphone/microphone jacks on your iMac.

TOOLS:

[Heavy-Duty Suction Cups \(Pair\)](#) (1)
[TR10 Torx Security Screwdriver](#) (1)
[Tweezers](#) (1)

PARTS:

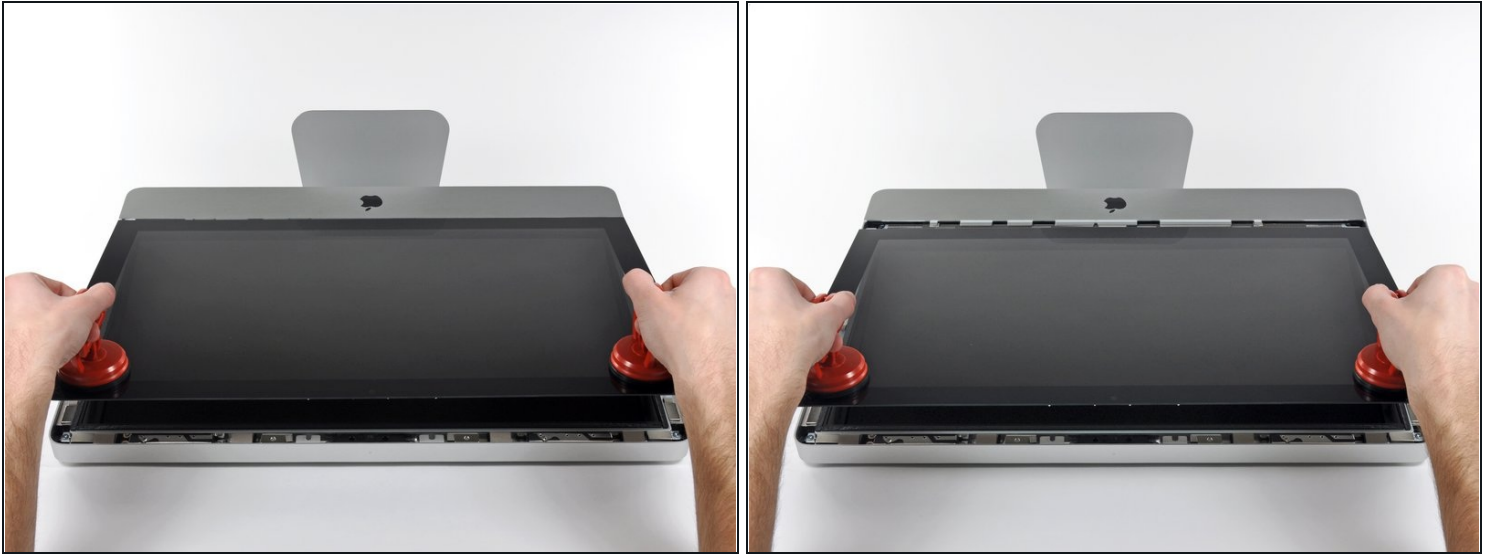
[iMac Intel 21.5" EMC 2428 Audio Ports](#)
(1)

Step 1 — Glass Panel



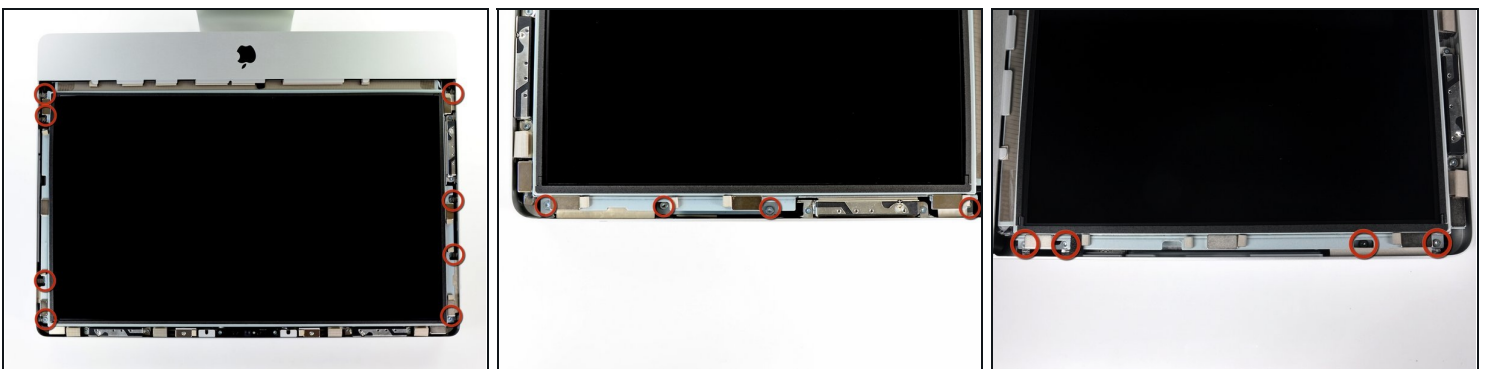
- ① Before beginning, unplug your iMac and lay it on a soft surface as shown.
- Stick a suction cup near each of the two top corners of the glass panel.
- ① To attach the [suction cups](#) we sell, first position the suction cup with the movable handle parallel to the face of the glass panel. While lightly holding the suction cup against the glass, raise the movable handle until it is parallel with the other handle.
- If your suction cups refuse to stick, try cleaning both the glass panel and the suction cup with a mild solvent.

Step 2



- Gently lift the glass panel perpendicular to the face of the LCD enough to clear the steel mounting pins attached along the underside of the top edge of the glass panel.
- Pull the glass panel away from the lower edge of the iMac and carefully set it aside.
- ☑ During reinstallation, be sure to meticulously clean the inside of the glass panel and the face of the LCD as any dust or fingerprints trapped inside will be annoyingly visible when the machine is turned on.

Step 3 — Display



- Remove the eight 8 mm T10 Torx screws securing the display to the outer case.
- ⓘ The last two pictures are detail shots of each side of the display.

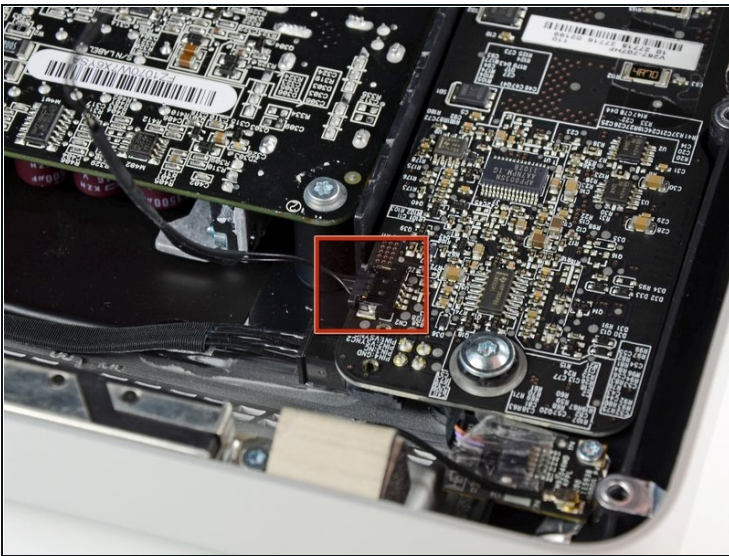
Step 4



- Slightly lift the top edge of the display out of the outer case.

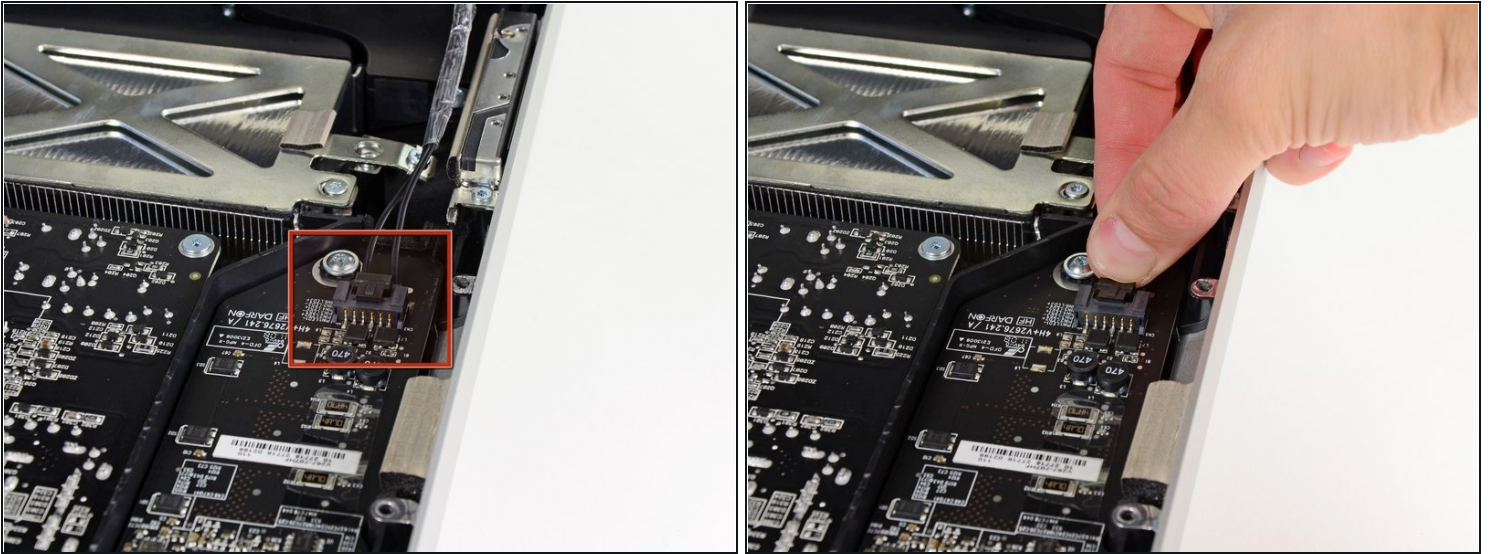
⚠ Do not lift it too much. There are several cables attaching the display to the logic board. Twisting or pulling the display assembly with the cables attached will damage your iMac.

Step 5



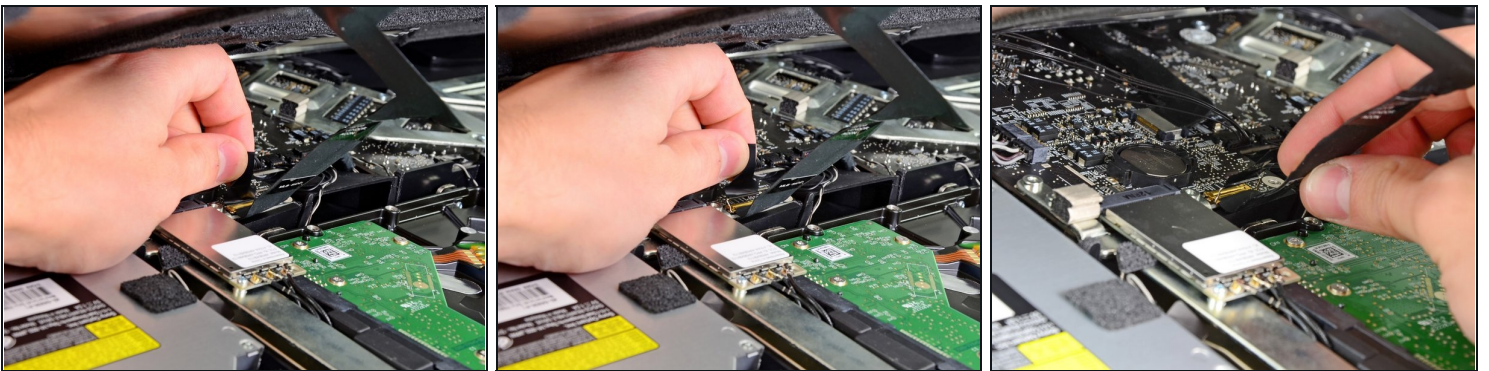
- Pull the vertical sync cable connector out of its socket on the LED driver board near the top left corner of your iMac.

Step 6



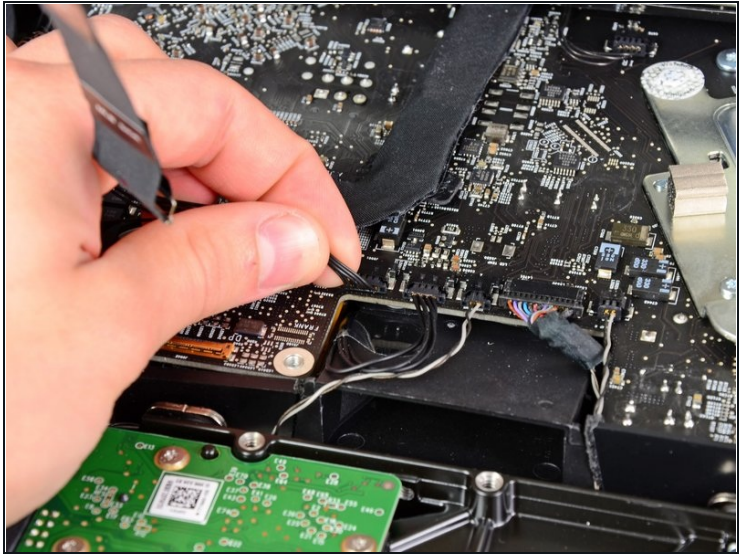
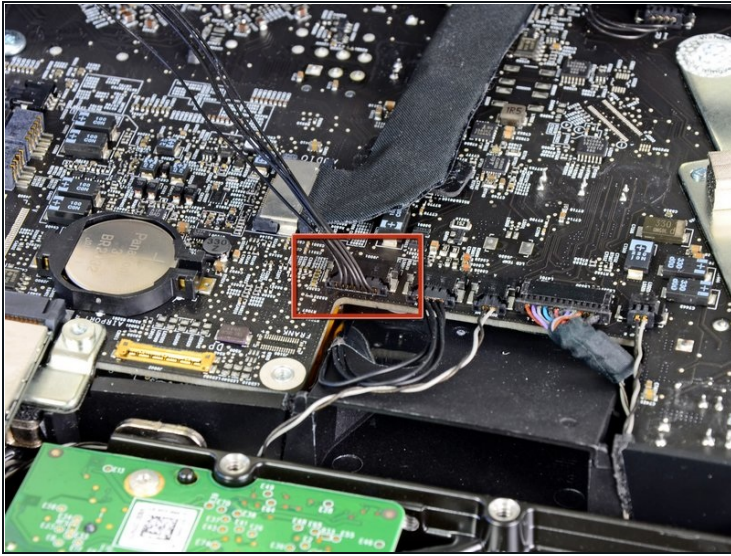
- Rotate the display out of the outer case enough to disconnect the LED backlight power cable from the LED driver board.
- ① Disconnect the LED backlight power cable by depressing the locking mechanism while pulling the connector away from its socket (toward the bottom edge of the iMac).

Step 7



- Grab the plastic pull tab secured to the display data cable lock and rotate it towards upwards.
- Pull the display data cable straight out of its socket on the logic board.
- ① Do not lift up on the display data cable, as its socket is very fragile. Pull the cable parallel to the face of the logic board.

Step 8



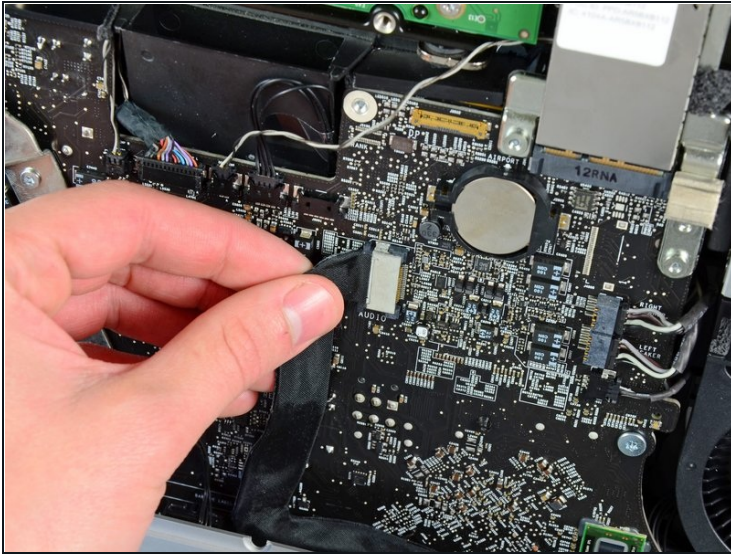
- Disconnect the LCD thermal sensor cable connector from its socket on the logic board.

Step 9



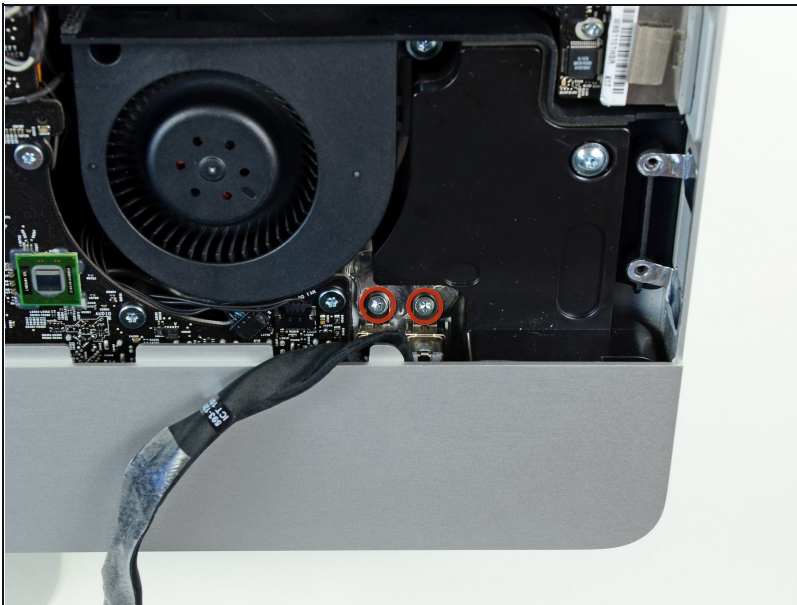
- Carefully pull the display toward the top edge of your iMac and lift it out of the outer case, minding any cables that may get caught.

Step 10 — Audio Ports



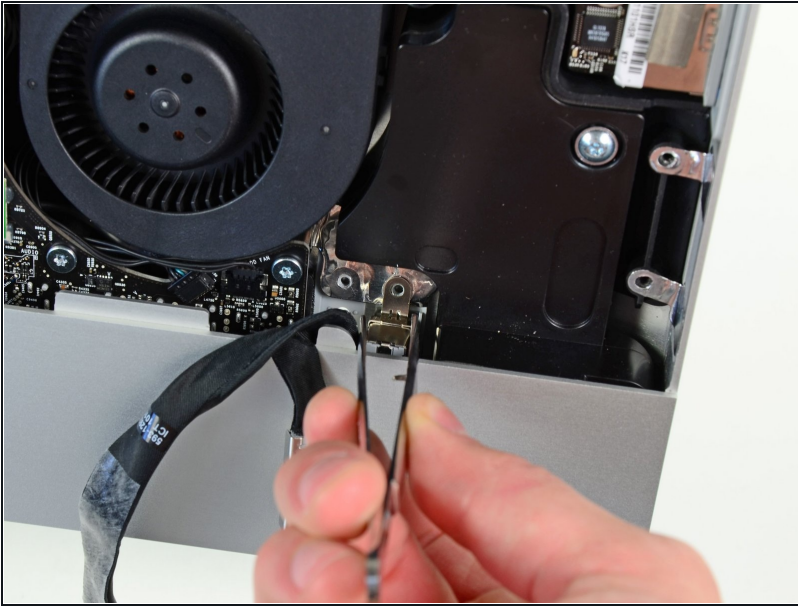
- Disconnect the audio port cable by pulling its connector toward the left side of the iMac.
- Peel the audio port cable off the front face of the logic board.

Step 11



- Remove two 5 mm T10 Torx screws securing the audio ports to the outer case.

Step 12



- Lift the audio ports out of the outer case.
- ☑ A pair of [tweezers](#) is helpful to put the ports back in place. First insert the lower tab into the bracket on the outer case, then fasten the screw to secure the jack to the outer case.
- ☑ During reinstallation, it may be helpful to plug in a pair of headphones to each jack before tightening them down completely.

To reassemble your device, follow these instructions in reverse order.