



Motorola Slvr L7 Front Panel Replacement

Written By: Jorge Trujillo





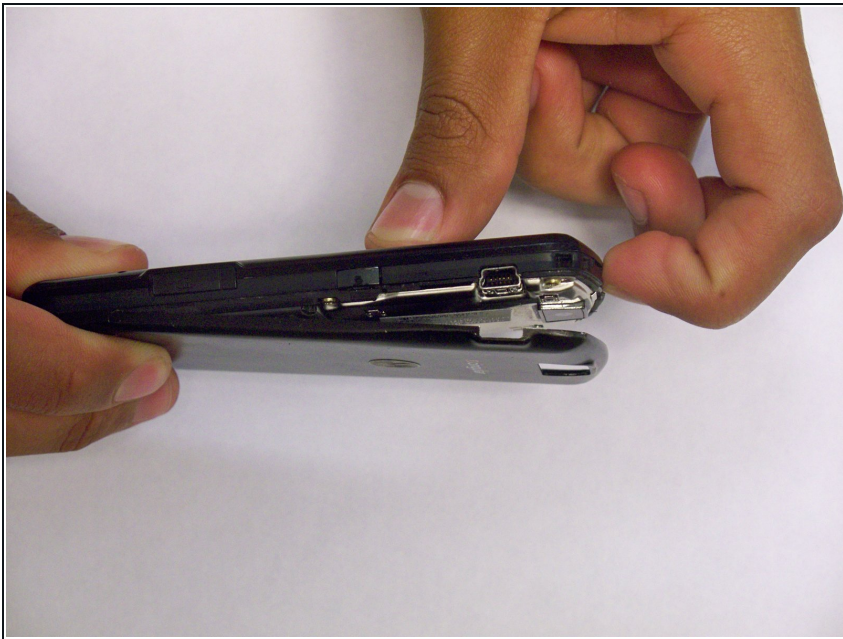
TOOLS:

Phillips #00 Screwdriver (1)

Spudger (1)

T6 Torx Screwdriver (1)

Step 1 — Front Panel



⚠ To ensure safety, discharge your phone battery below 25% before starting. A fully charged lithium-ion battery may cause a fire and/or explosion due to defects or damage.

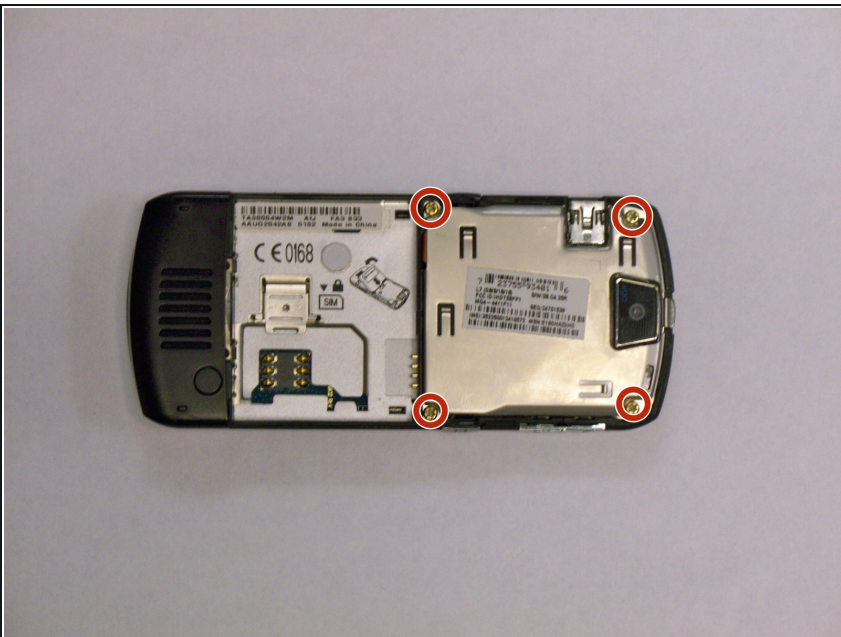
- Turn off your phone before beginning disassembly.
- To replace the Front Panel, first begin by removing the battery.
- Push down on the black tab located on the top center of the phone to access the battery.

Step 2



- Remove the battery by pulling it away from the back of the phone.

Step 3



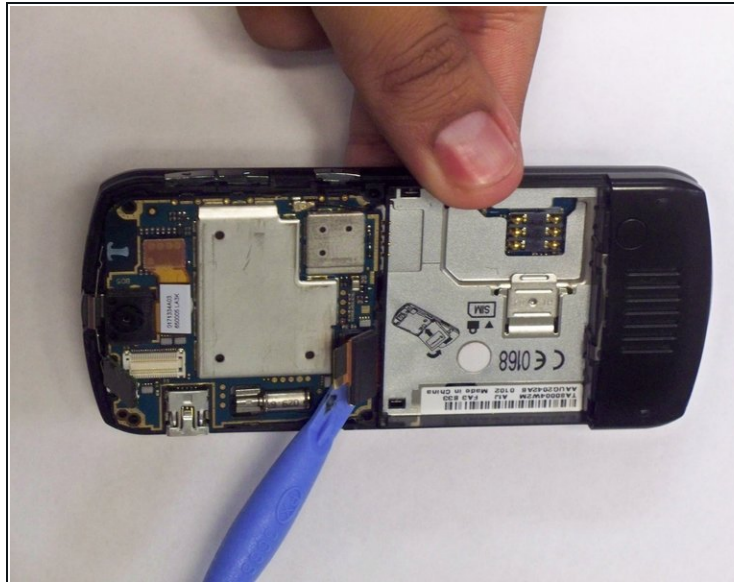
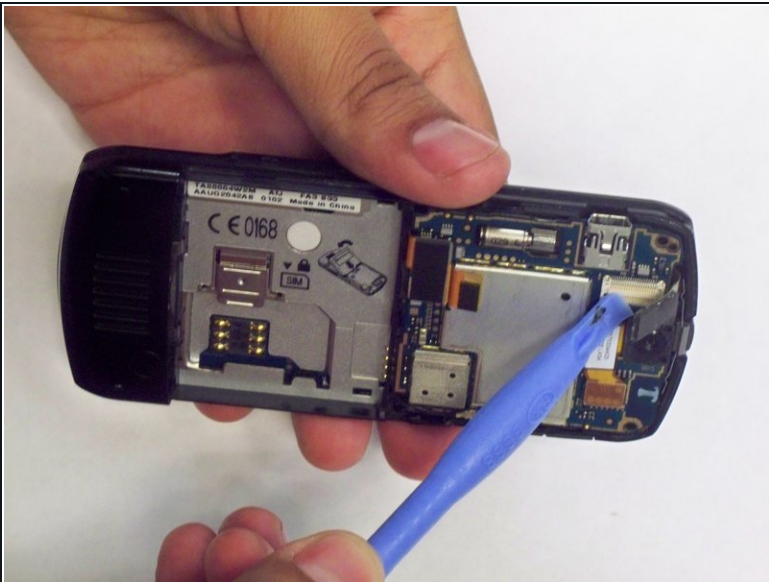
- Using the T6 Torx Screwdriver, remove the four (4) T6 2mm Torx screws from the metal cover.

Step 4



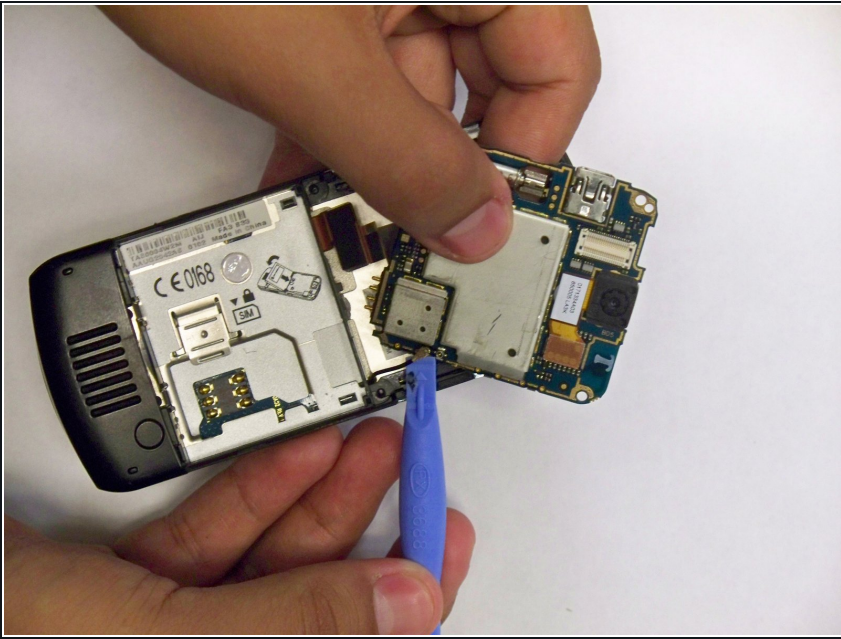
- Remove the metal cover by inserting the flat end of the iFixit Opening Tool under the side of the cover, prying it away from the phone.

Step 5



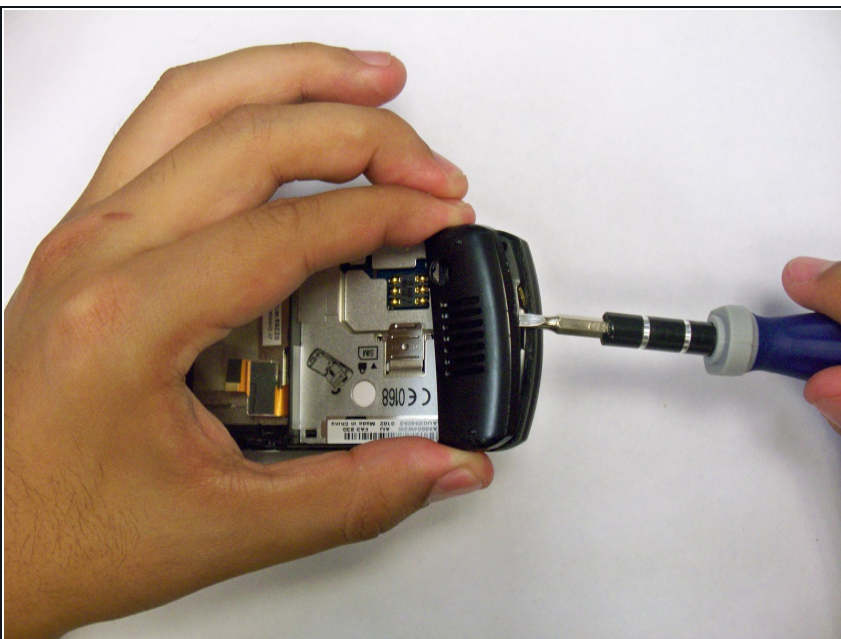
- Carefully disconnect the two connectors from their sockets located on the motherboard using the flat end of the iFixit Opening Tool.

Step 6



- Use the flat end of the iFixit Opening Tool to pry the antenna cable connectors from their sockets located on the motherboard.
- Pull the antenna cable out to de-route it from the phone.

Step 7



- Use the iFixit Opening Tool to pry the black plastic screw cover away from the bottom of the phone.

⚠ Because the cover is attached with adhesive, moderate force is needed to remove the plastic screw cover from the phone.

Step 8



- Remove the frame by inserting the flat end of the iFixit Opening Tool under the frame and prying it away from the phone.

⚠ Because the frame is attached with adhesive, moderate force is needed to remove the frame from the phone.

To reassemble your device, follow these instructions in reverse order.