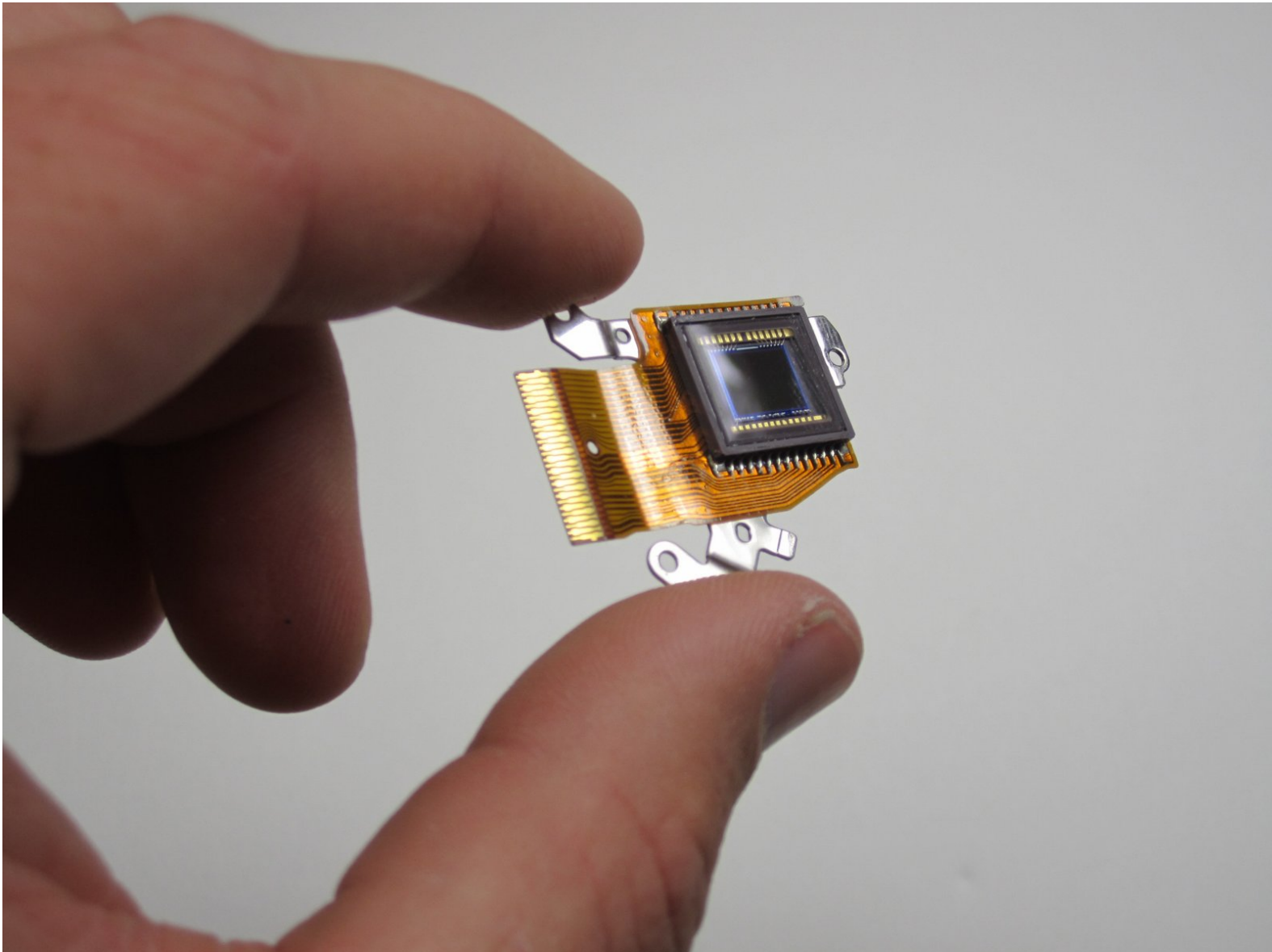




Canon Powershot SD550 Image Sensor Replacement

This guide will show you how to take apart your PowerShot SD550 camera and replace the image sensor.

Written By: Matthew Theiss



INTRODUCTION

The image sensor is what actually captures the image when you take a picture. If damaged, the sensor can cause blurred, distorted, or even black pictures to be taken.

TOOLS:

- [Precision Utility Knife](#) (1)
 - [Phillips #00 Screwdriver](#) (1)
-

Step 1 — Outer Case



- Remove the battery and SD card from the camera.

Step 2



- Remove the three 3.8 mm screws from the underside of the camera.
- ⓘ Each of the screws is slightly different, so it is important that you note the original location of each screw.

Step 3



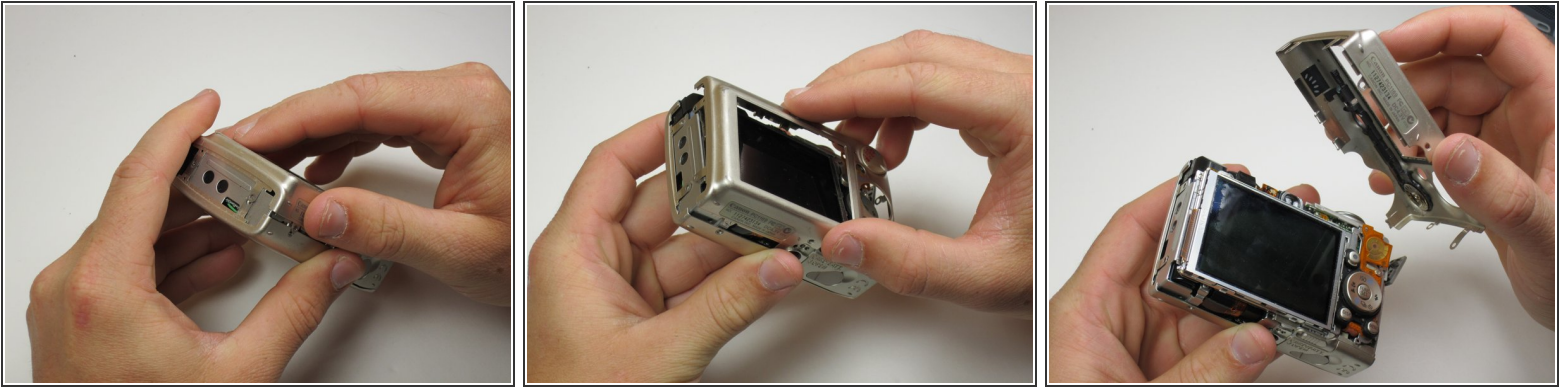
- Remove the 3.2 mm screw from the right side of the camera.
- Remove the 2.2 mm screw from the right side of the camera.
- ⓘ One of these screws is hidden under the USB port cover.
- Lift the side panel off.
- Remove the 1.8 mm screw from underneath the side panel.

Step 4



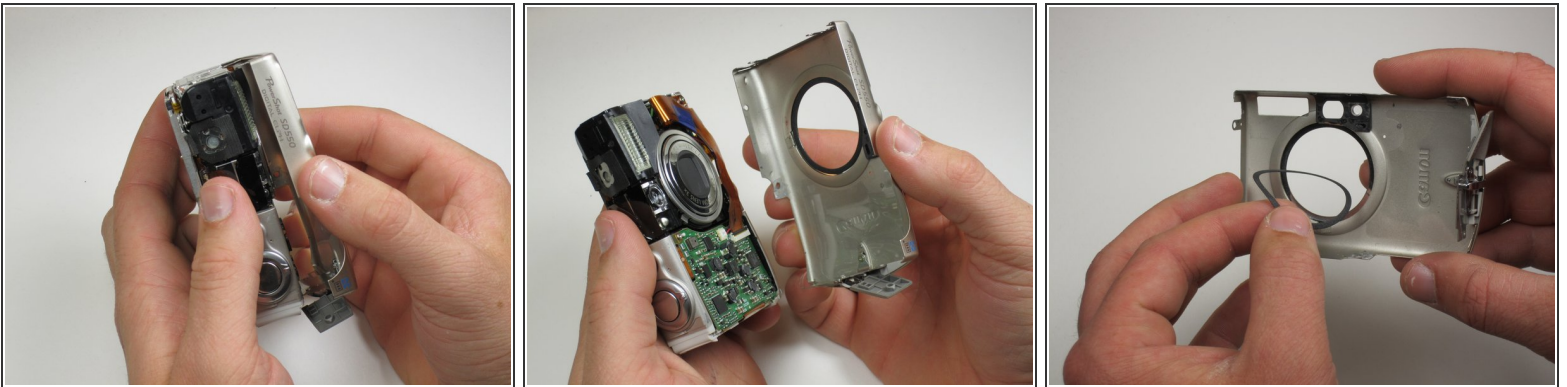
- Remove the two 2.2 mm screws from the left side of the camera.
- Lift the plate from the camera.

Step 5



- Gently lift the rear of the case to remove it from the camera.

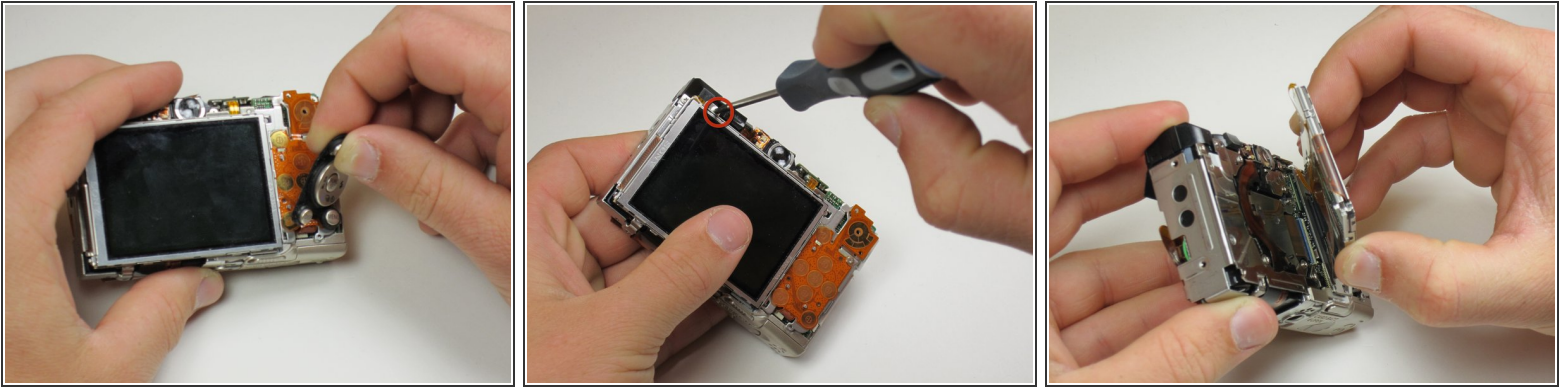
Step 6



- Remove the front of the camera body.

 Be sure to keep track of the rubber ring.

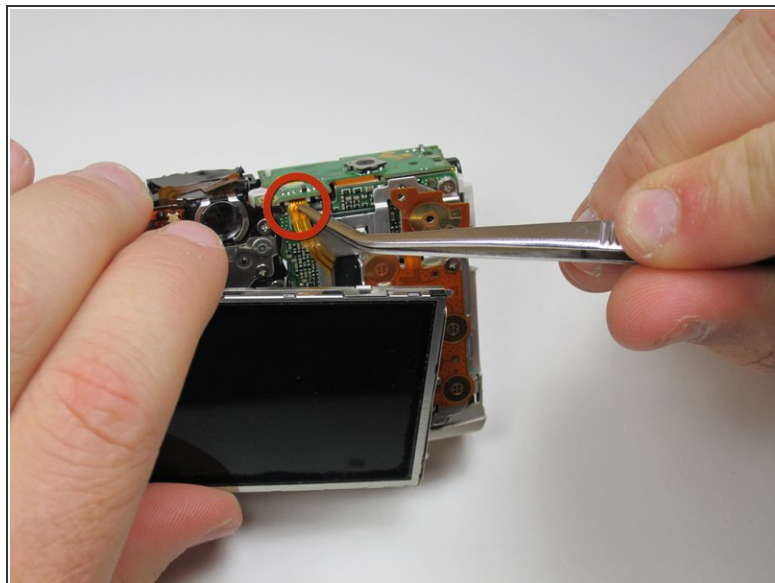
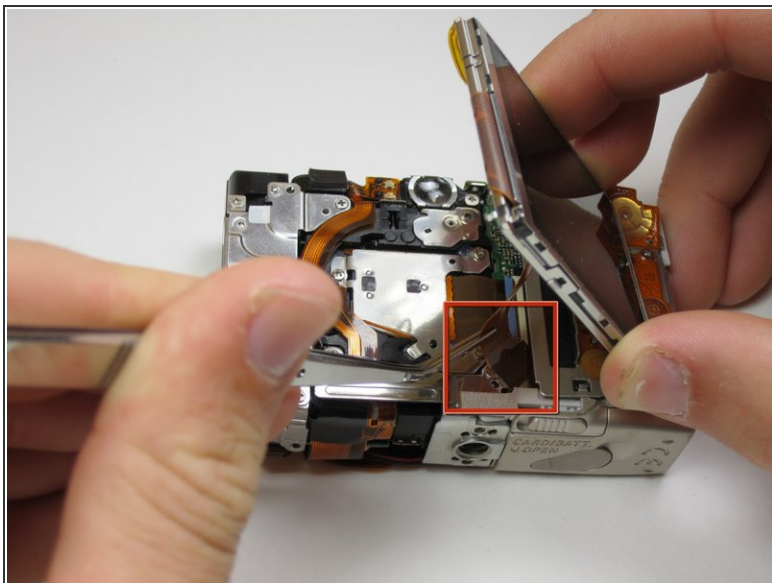
Step 7 — LCD Screen



- Peel the navigation buttons from the button panel and set them aside.
- To free the LCD display, remove the 2.9 mm screw in the top left corner.
- Rotate the screen clockwise until it lifts away from the camera.

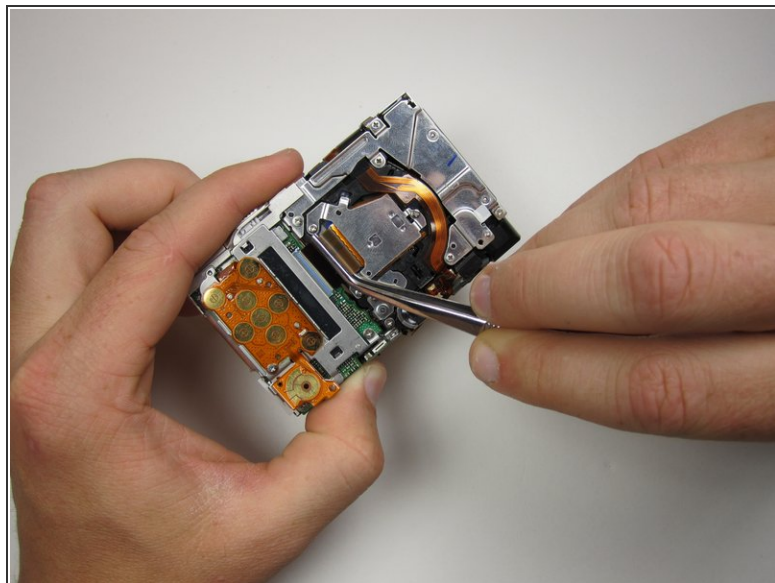
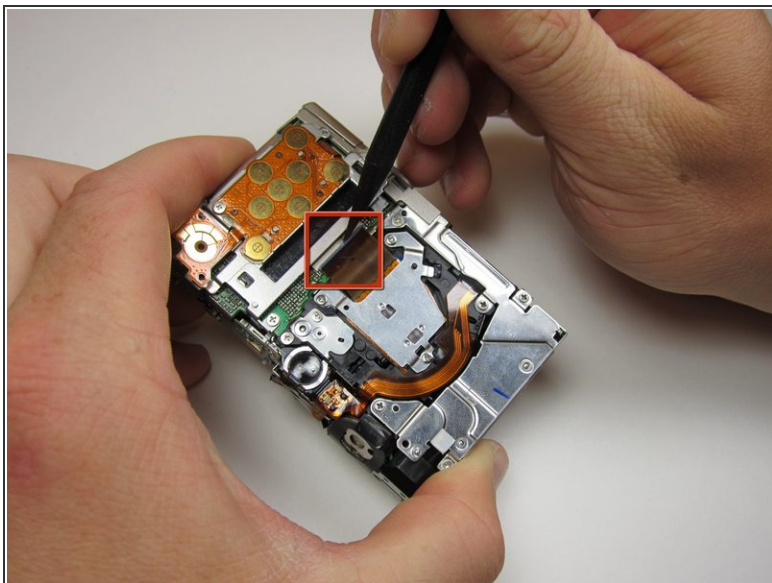
⚠ There are two ribbon cables attached to the rear of the screen. Do not try to pull the screen off at this point.

Step 8



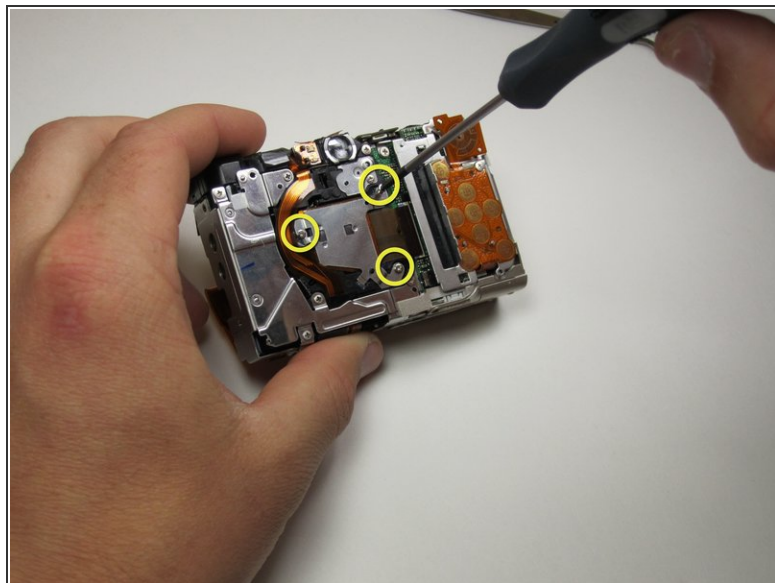
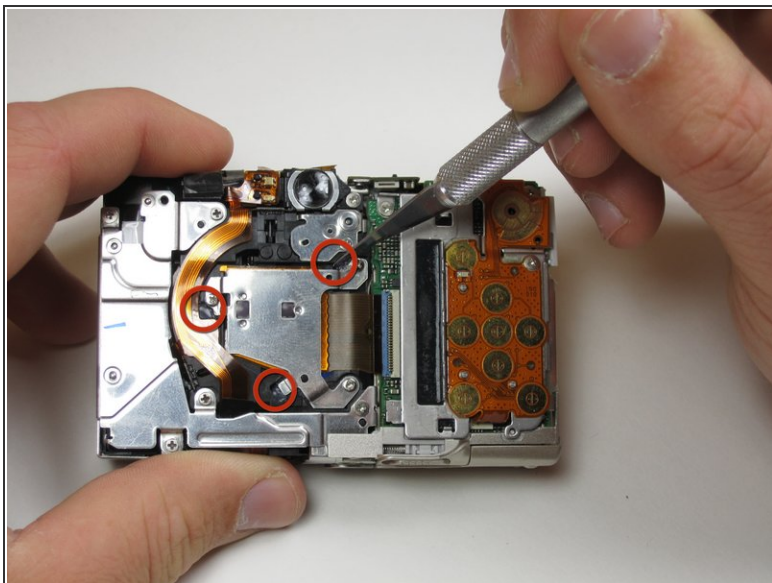
- To unplug the ribbon cables, pull them straight out of their plugs. Do this gently to avoid damaging the connections.
- After disconnecting both cables, pull the screen away from the camera to remove it.

Step 9 — Image Sensor



- Now the photo sensor is exposed. In order to remove the ribbon cable from its port, first flip up the blue locking mechanism.
- After the cable is unlocked, it easily pulls free.

Step 10

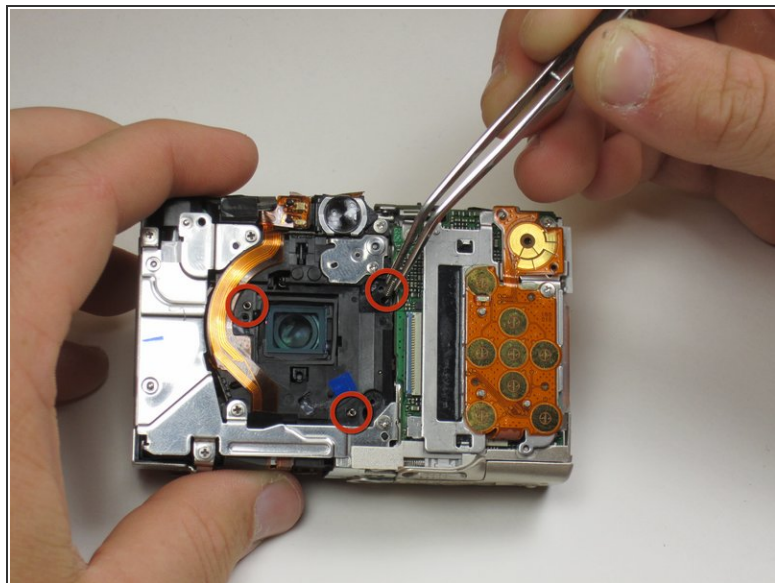
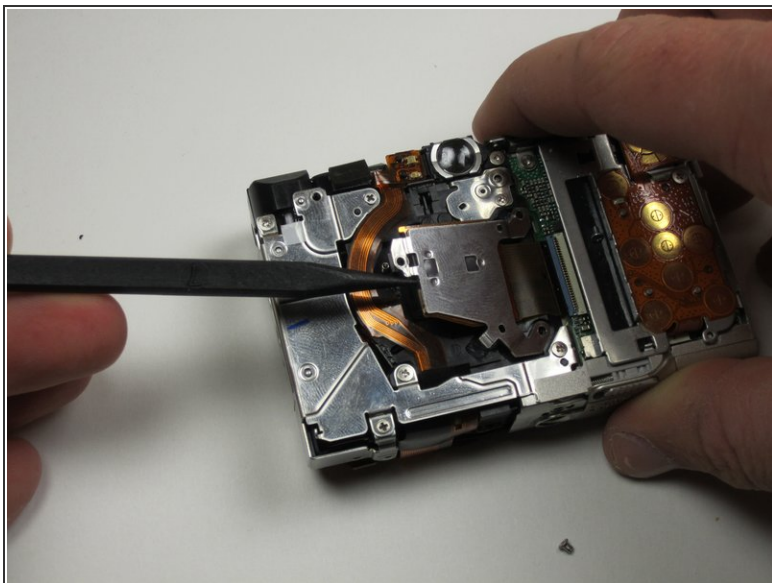


- In order to remove the photo sensor, you will have to cut through glue and remove screws.
- Use a knife to carefully slice through the glue at the three points indicated. Try not to cut through anything but the glue to avoid damage.

⚠ WARNING: Knives are sharp. Treat them with respect.

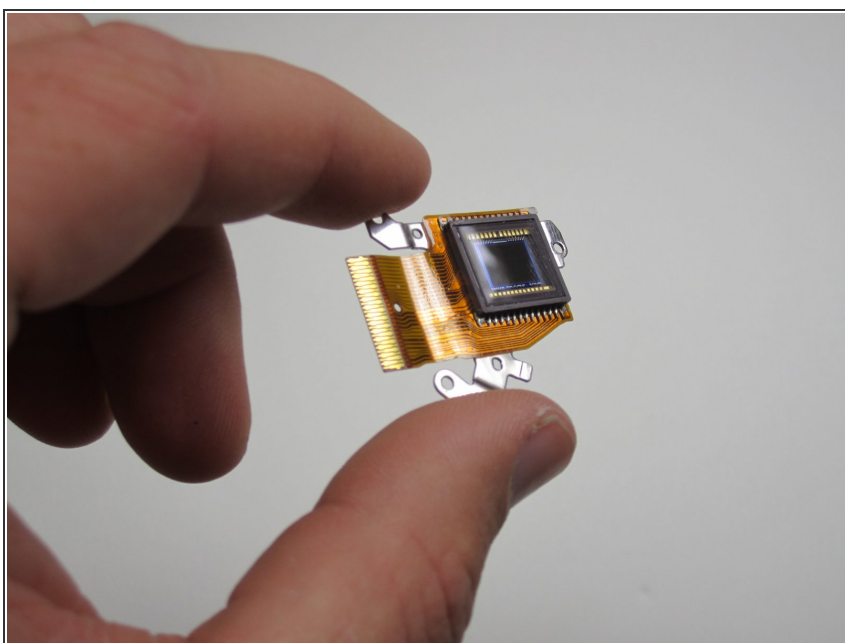
- Now remove the three .15 inch screws holding the photo sensor to the camera frame.

Step 11



- Now you can carefully lift up the image sensor and remove it from the camera.
- Be careful not to lose the three small springs or the rubber grommet that lie beneath the sensor.

Step 12



- You have now successfully removed the image sensor.

To reassemble your device, follow these instructions in reverse order.