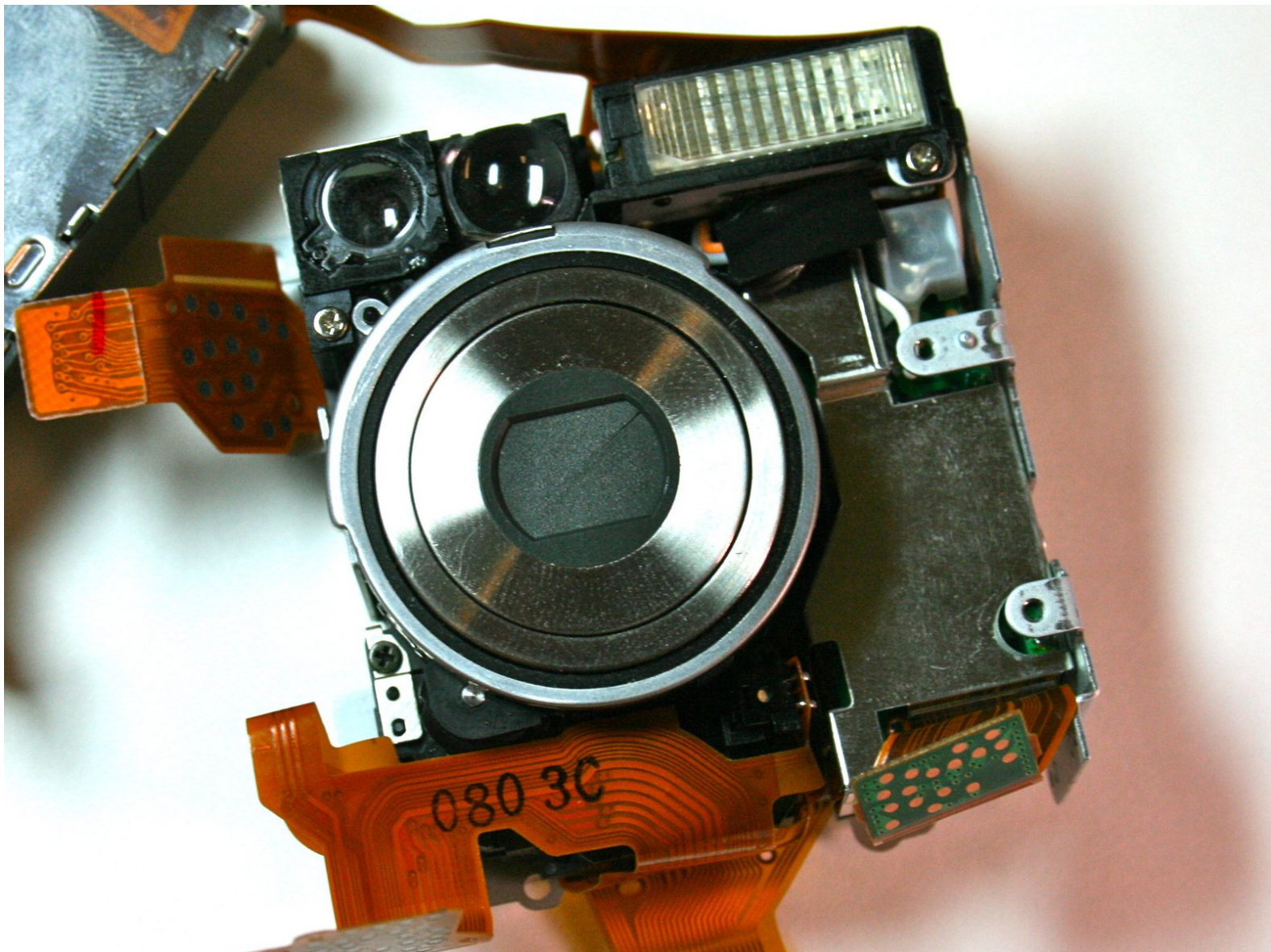




Canon Powershot S200 Camera lens Replacement

This guide will walk you through the process of removing the camera's lens for replacement.

Written By: Joseph Melo



INTRODUCTION

The lens is used for capturing specific scenes and to feed these scenes into the camera.



TOOLS:

- [Phillips #00 Screwdriver](#) (1)
-

Step 1 — Battery



- Slide the grey latch to open the battery compartment.

Step 2



- Push and slide the orange retaining clip to the right to remove the battery.

Step 3



- Remove battery from the camera.

Step 4 — Motherboard



- Remove the lanyard.

Step 5



- Position the camera so that the bottom is facing up.
- Remove the two 2.3mm screws beneath the name plate.
- Remove the two 2.8 mm screws surrounding the threaded tripod mount.

Step 6



- Remove the 3.8mm screw from the back face of the camera.

Step 7



- Remove the two 2.3mm screws from the right face of the camera.

Step 8



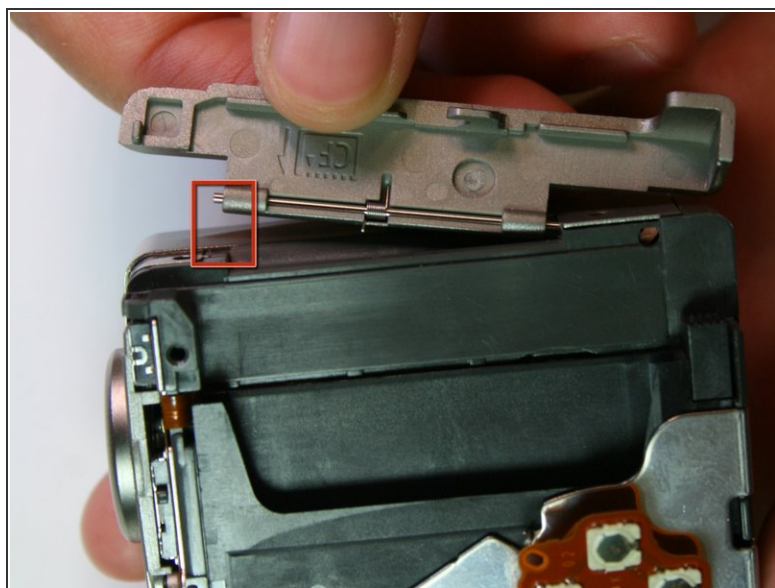
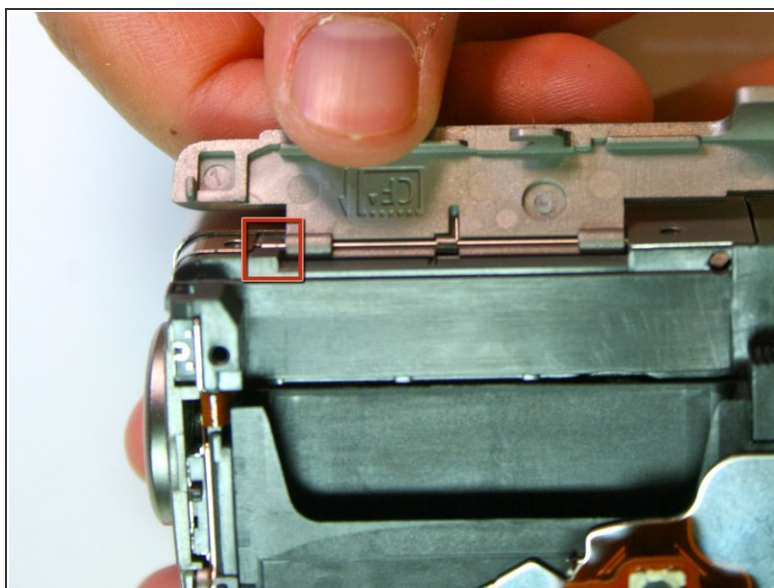
- Remove the two outer 3.2mm screws from the left side of the camera
- Remove the two inner 3.7mm screws from the left side of the camera.

Step 9



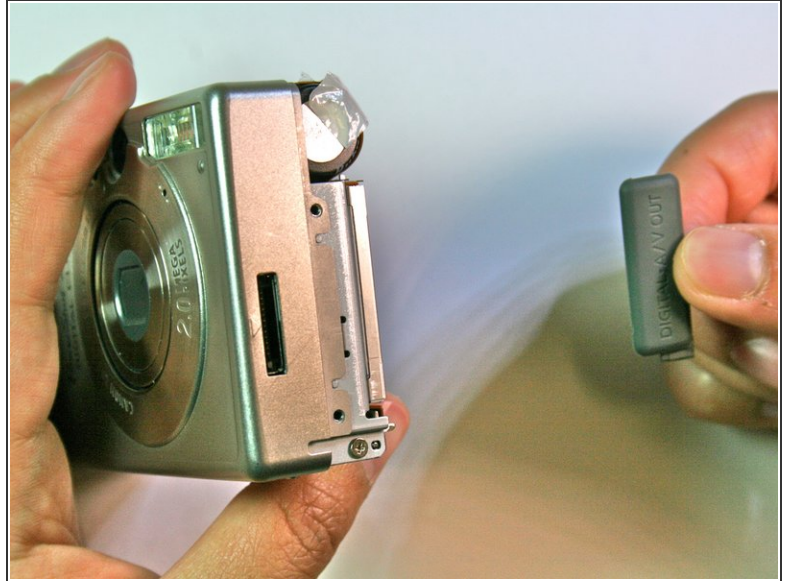
- Pull the back face panel away from the front end of the body. This may take some wiggling and force.

Step 10



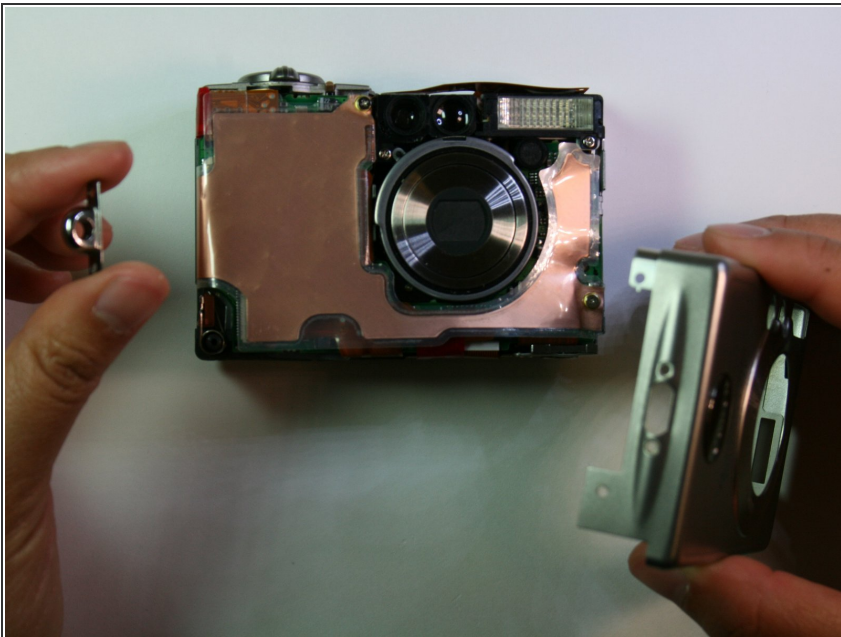
- Remove the CF card door from the left side of the camera body.

Step 11



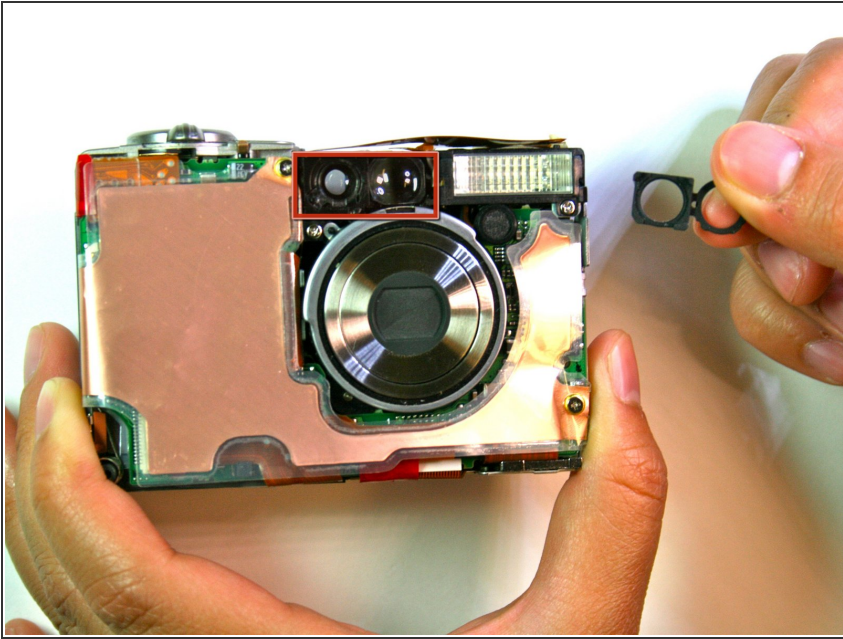
- Slide the rubber digital a/v cap out of place on the front plate.

Step 12



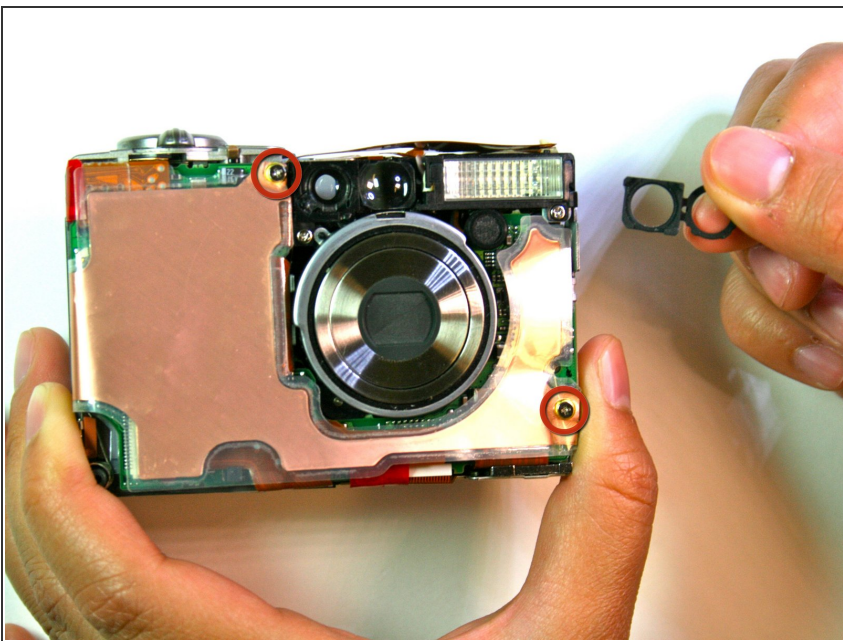
- Remove the front face by sliding it off.

Step 13



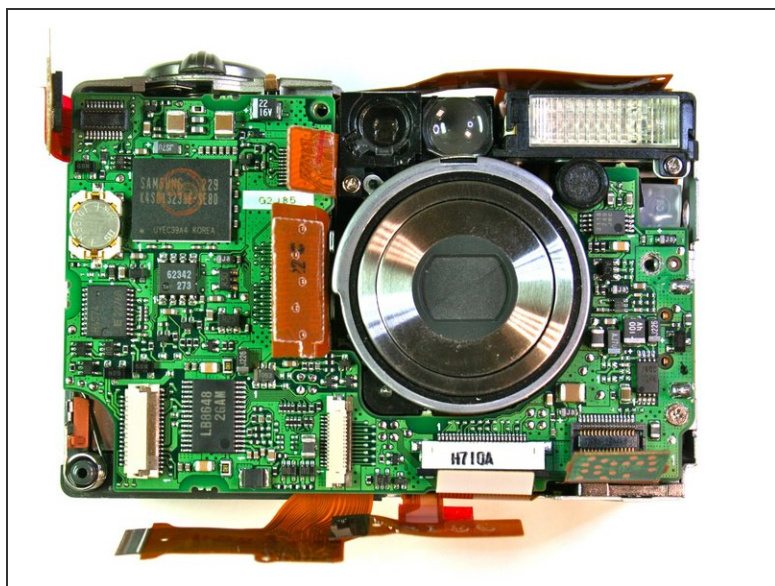
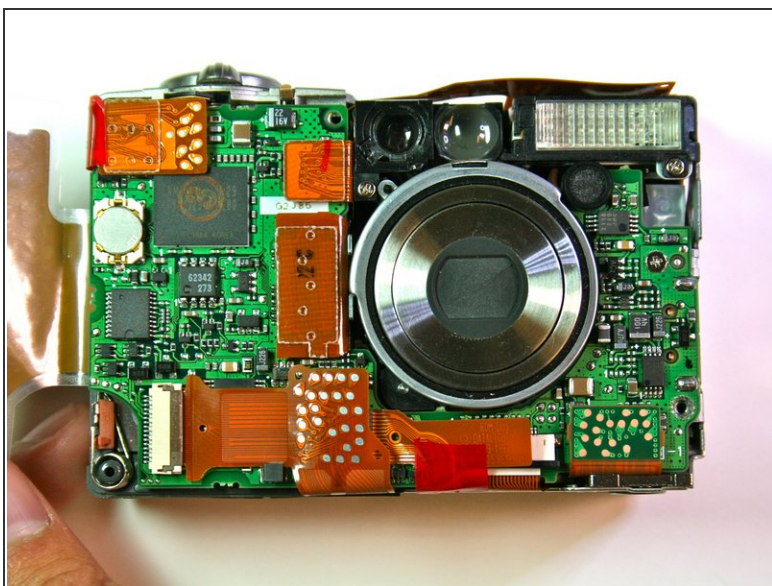
- Remove the rubber seal that covers the right side of the viewfinder.

Step 14



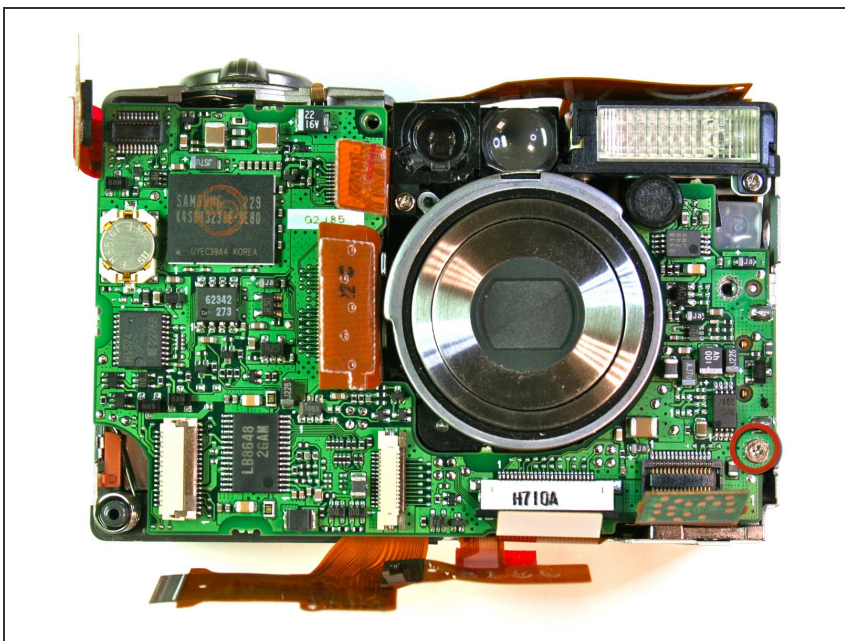
- Remove the two 3.9mm screws that hold the laminated copper sheet.

Step 15



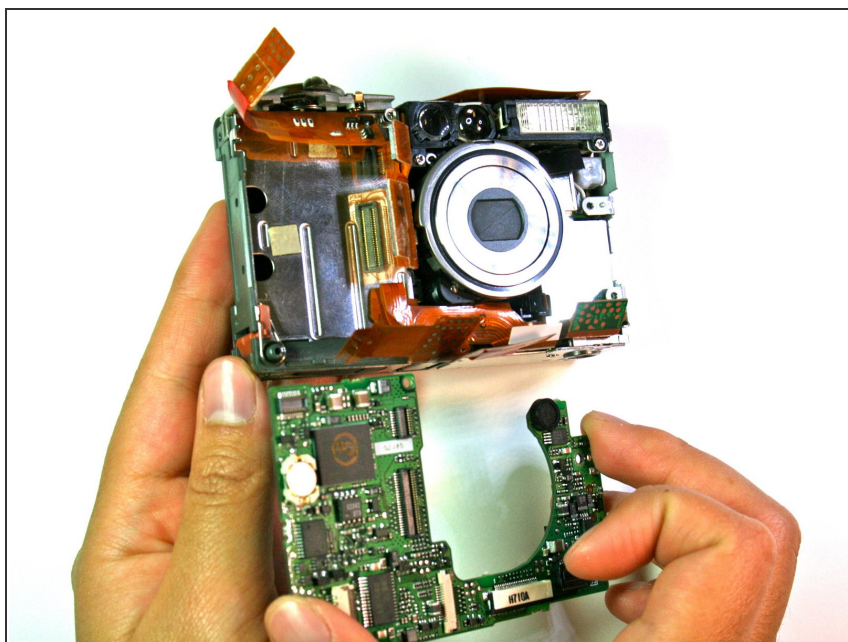
- Remove the wire connections that connect along the bottom of the motherboard.

Step 16



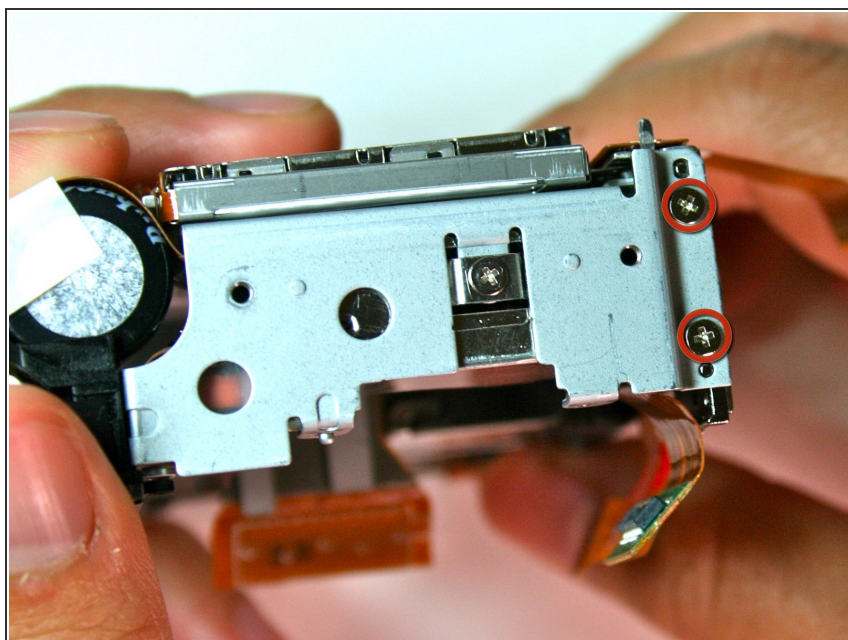
- Remove the single 3.8mm screw that is on the motherboard.

Step 17



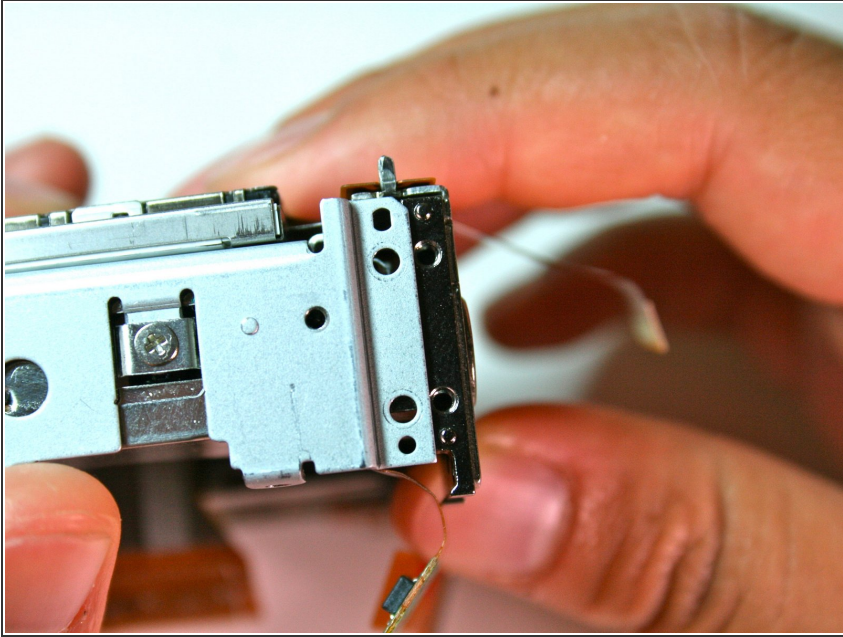
- Remove the motherboard from the main frame of the camera body.

Step 18 — Screen



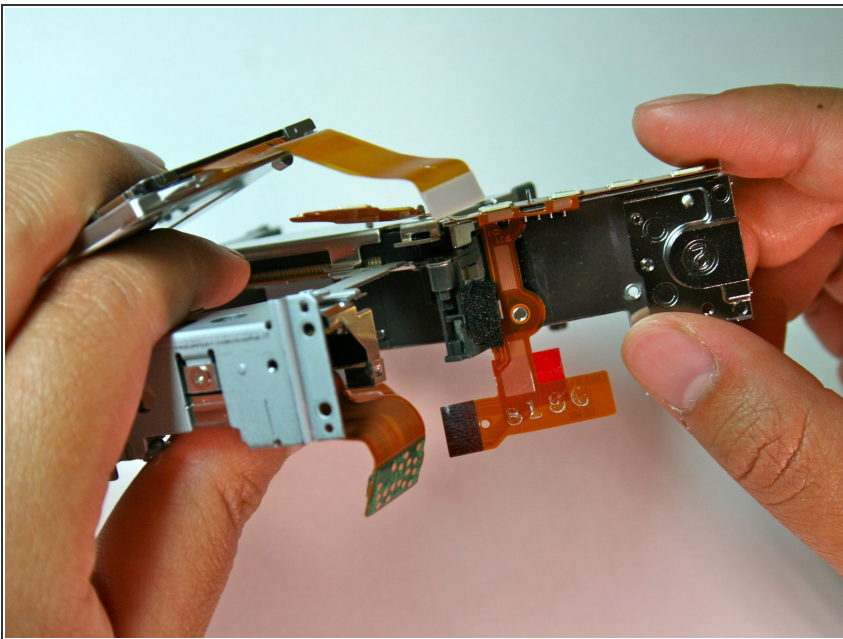
- After completing the removal of the motherboard, remove the tripod mounting screws (3.4mm) on the left side

Step 19



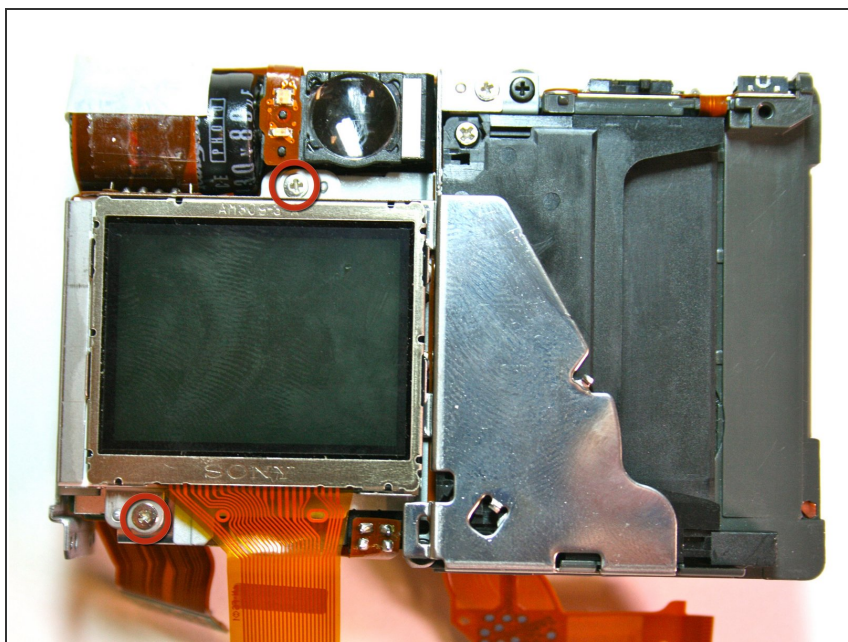
- Carefully pry the left side of the housing plate from the bottom of the tripod mounting plate, releasing it from the two alignment pegs next to the screws

Step 20



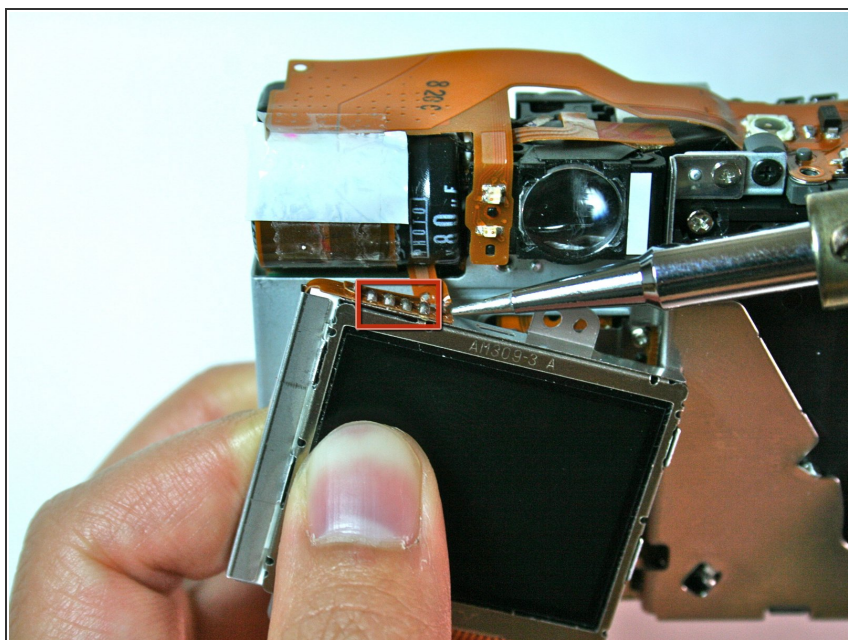
- Lift the left side of the tripod mounting plate towards you, lift free the mounting plate from the rest of the assembly
- Be careful because there are still wire connections attached to the mounting plate which you don't want to remove

Step 21



- Remove the 2.1mm screws from the bottom and top of the screen connecting it to the housing plate

Step 22



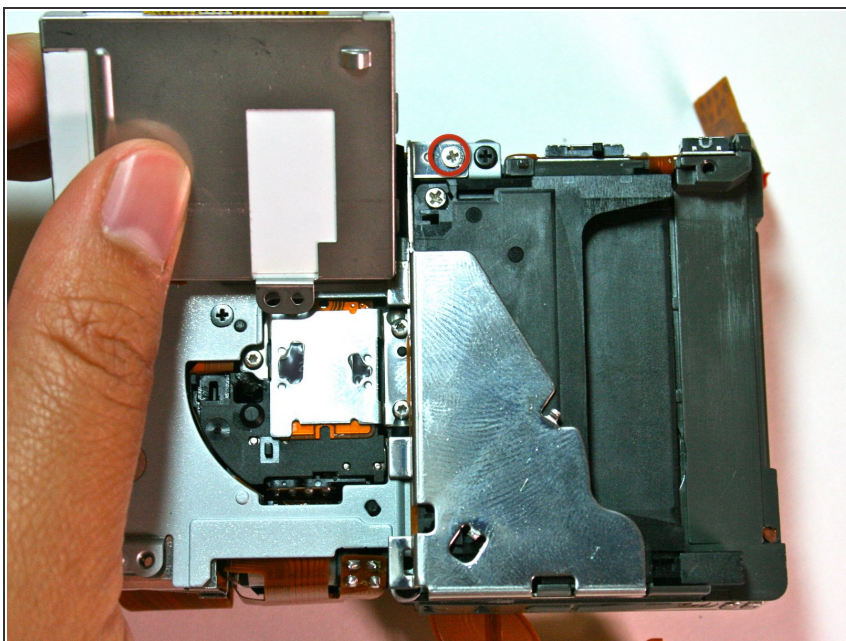
- Unsolder the four points at the top of the screen with a soldering iron

Step 23 — Camera lens



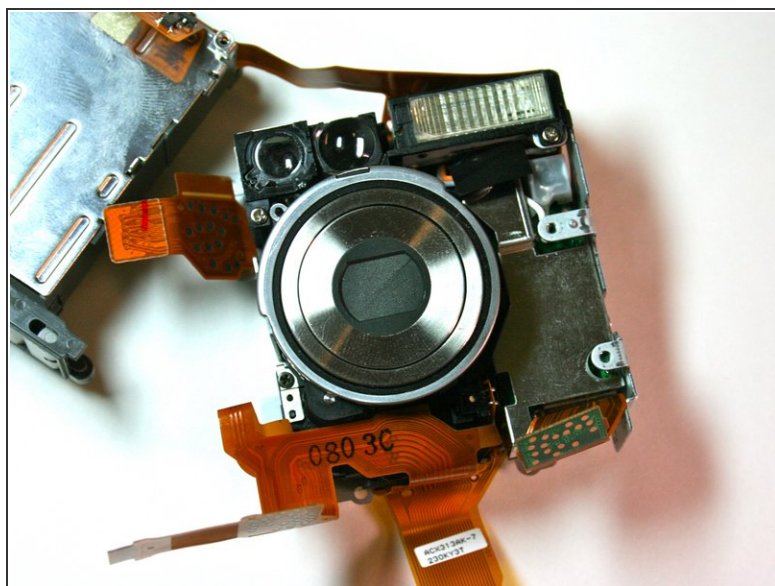
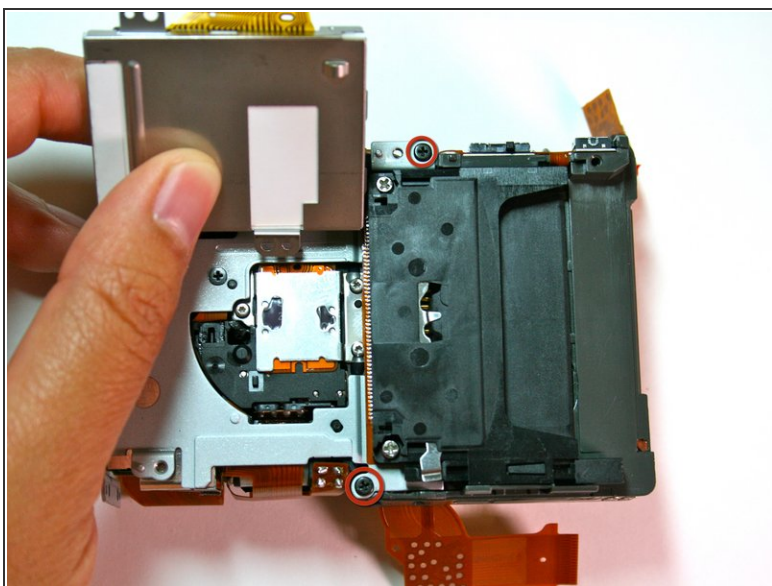
- i** You do not need to unsolder the screen to get to the lens, but follow the rest of the steps to free the screen from the housing plate.

Step 24



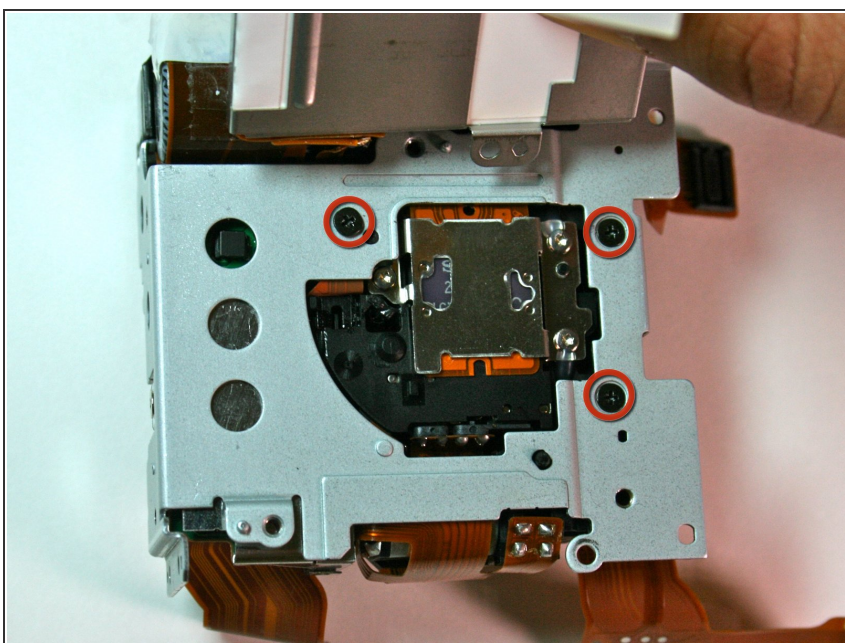
- Remove the card-reader shield by removing the screw at the top of the shield.

Step 25



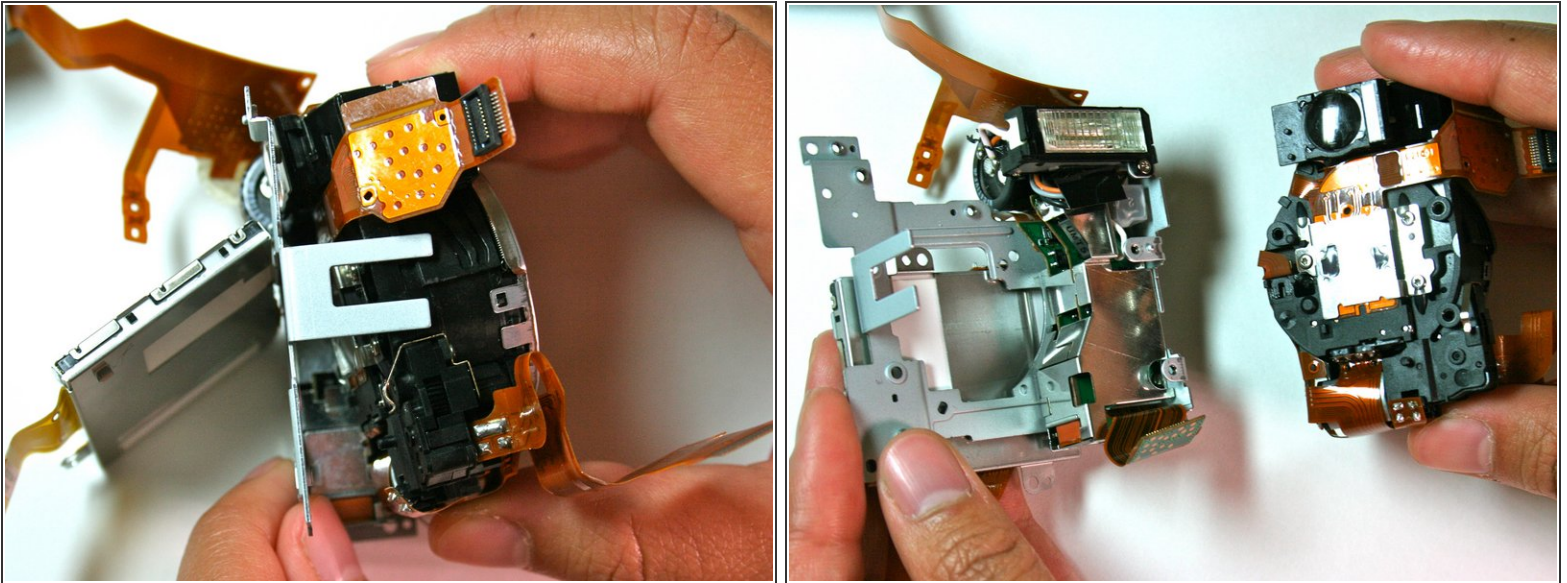
- Remove the 2 black screws that attach the battery box to the housing plate.
- ⓘ The second picture shows the battery box detached from the housing plate.

Step 26



- Remove the three (3.1mm) black screws that were behind the screen and battery box.

Step 27



- Carefully remove the lens.
- ⓘ Remove the bottom side of the lens first before the viewfinder side.
- ⚠ Be careful of wires and delicate parts.

To reassemble your device, follow these instructions in reverse order.